

What is it?

BJSS Azure Landing Zone delivers a foundation to host new and migrated workloads and applications in an Azure environment. It is built around eight key design areas which follow Cloud Adoption Framework (CAF) and the Well Architected Framework (WAF) recommendations by Microsoft, combined with BJSS best practices and Accelerator.

Who is it for?

The BJSS Azure Landing Zone is for organisations of any size who wish to utilize the Azure platform to host workloads.

You may be facing these challenges or have similar requirements:

- Require a robust platform to host workloads.
- A need to adopt Cloud at pace.
- Concerns around Security and Governance.
- Issues with scaling the environment.
- A need for clear visibility of the environment and the associated costs.
- Reduce the operational overhead of the environment.

Key Principles

Policy-driven governance



Azure Policy enforces guardrails, governance, and security within the environment.

Allows rapid adoption of cloud whilst adhering to standards.

Application centric



Focus on the requirements of the applications, not the infrastructure.

Support for all applications, old and new.

Subscription democratisation



Deploy workloads into dedicated subscriptions for ease of segregation of policy/RBAC/FinOps.

Split platform vs application resources into dedicated environments.

Modular & scalable

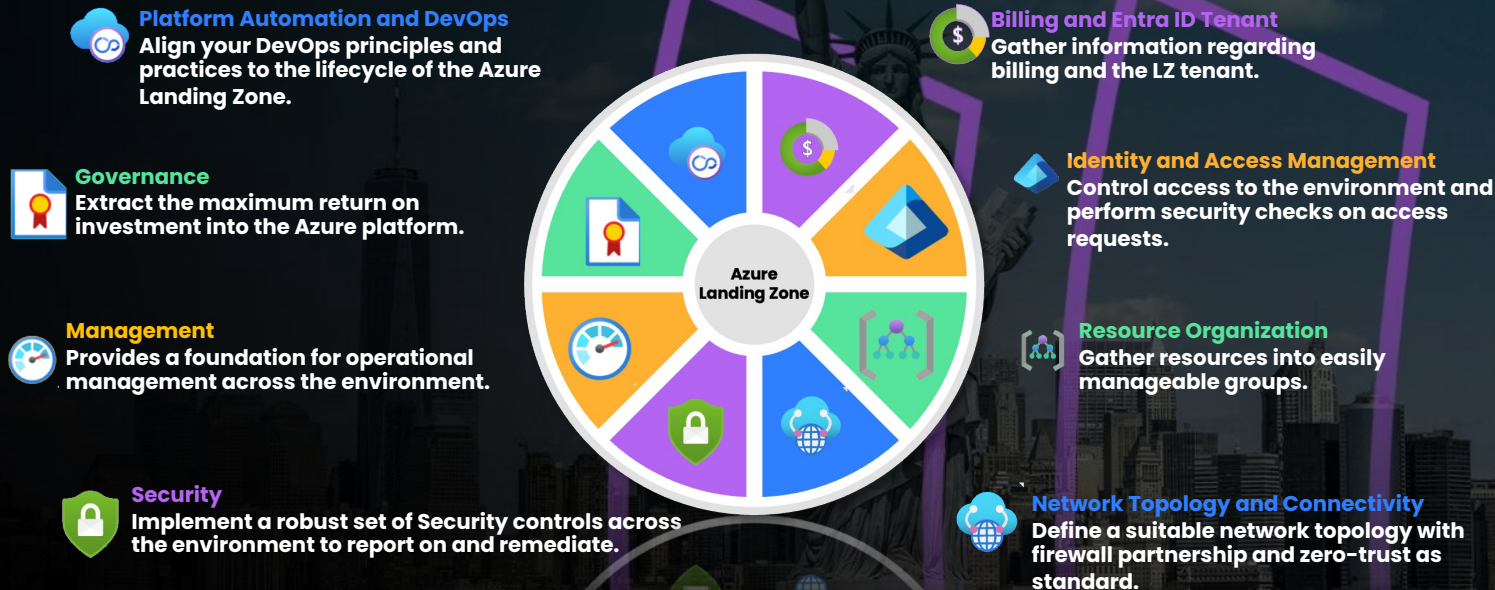


Built to be scalable and modular. Start small and then expand.

Supports for a single workload, to thousands of workloads.

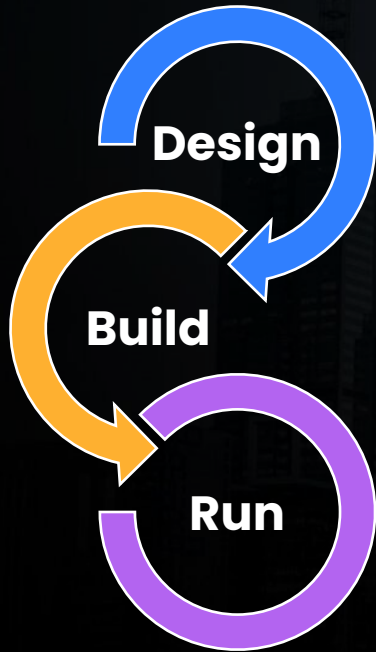
Design Areas – High Level View

The BJSS Azure Landing Zone consists of 8 key design areas.



How we Deliver

We combine technical **Accelerators**, Cloud expertise, and experience of complex delivery to build the **right** solution. High **speed** and high **quality**, tailored for your organisation.



Design

- Introduce the team; describe the environment and its purpose; and gather requirements.
- Initial operational model discussions.
- Project planning and task creation.
- Provide required prerequisites.
- Detailed workshops with SMEs from relevant areas (Infra, Security, Identity, Networking, DevOps, FinOps).
- Create detailed HLD and LLD documentation for review and signoff.
- Regular communication on design progress for discussion.

Build

- Configuration of CI/CD environment.
- Deployment of documented and approved environment.
- Regular feedback on environment progress.
- Functional and acceptance testing for all Landing Zone components.

Run

- Fully Managed Service to maintain the environment and enable workload onboarding.
- Dedicated and detailed knowledge transfer sessions to all customer teams.
- Operating model signoff and handover.
- Final handover of all completed documentation.
- Project signoff and transition to Run phase.

Key Azure Services*

Security Protect



Defender for Cloud



Security Baselines



Key Vault



Firewalls



Defender for Endpoint

Identity Access



Entra ID



Applications



Managed Identities



Hybrid Identity



Identity Governance

Operations Manage



Logging



Cost Optimisation



Azure Arc



CI/CD



Backups

Networking Connect



Express Route



Virtual WAN



Application Gateway



Private Endpoint



DNS Zones

Governance Compliance



Management Groups



Policy



Advisor



Tags



Dashboards

Why BJSS?

Proven to solve your complex technology problems we operate in 26 locations across the UK, US, Europe, and Australia.

Who we are

- We have distilled years of experience in **Cloud** into **BJSS Accelerators** – ready to prove value **at speed**.
- We leverage our engineering heritage to design end-states with the roadmap and **delivery** knowledge to get you there quickly– tailoring every step to **fit your organisation**.
- We take pride in excellent client outcomes and never sacrifice **quality** whilst always delivering what is right for your organisation.

What we do

- Technology Strategy & Innovation
- Customer Experience, Product & Design
- Technology Delivery
- Managed Services

Our Industry Expertise:

- Energy, Commodities & Utilities
- Transport & Logistics
- Financial Services
- Healthcare & Life Sciences
- Media & Entertainment
- Public Sector
- Real Money Gaming
- Retail & Consumer Markets

