

3566002	3566002	3566002	3566002	3566002	3566002	Tony Fox	Lee Parr	Yara - Da	Yara - Ar	mikael al	Hans Sch	Alessio C	Danielle
TRIAG...	SW-2...	All de...	All de...	All de...	All de...	A...	A...						

3566002	3566002	3566002	3566002	3566002	3566002	Tony Fox	Lee Parr	Yara - Da	Yara - Ar	mikael a	Hans Sch	Alessio G
TRIAG...	SW-2...	All de...	All de...	All de...	All de...							

3566002	3566002	3566002	3566002	3566002	3566002	Tony Fox	Lee Parr	Yara - Da	Yara - Ar	mikael a	Hans Sch	Alessio C	Danielle
TRIAG...	SW-2...	All de...	All de...	All de...	All de...								

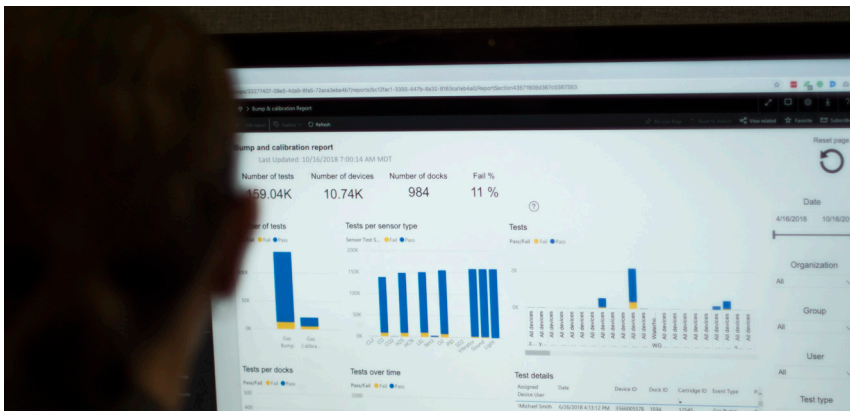
Blackline Analytics



EMPOWERING BUSINESS DECISION MAKING WITH "BIG DATA"

WHAT IS BLACKLINE ANALYTICS?

Blackline Analytics delivers a complete view of your fleet's operations in one, easy-to-use platform. G7 devices constantly generate and store large volumes of data and stream it back to the Blackline Safety Network when in areas of connectivity. This "big data" is automatically compiled into Blackline Analytics, and seamlessly organized into a series of maps, graphs and tables. From gas alerts to device usage and compliance, Blackline Analytics helps users derive important insights about their business, measure KPIs, drive safety and productivity initiatives and power informed decision making.



BIG DATA, BIG INSIGHTS

Built directly into our Blackline Live portal, Blackline Analytics is available to any user with login credentials and can be accessed from any internet-connected device. All information displayed on the analytics platform can be easily filtered and sorted to best suit a user's needs. Users logging into Blackline Analytics will see a series of ten reports which they can use to review the maintenance and compliance of their fleets, view events, view alert response times and more.

More data, less work

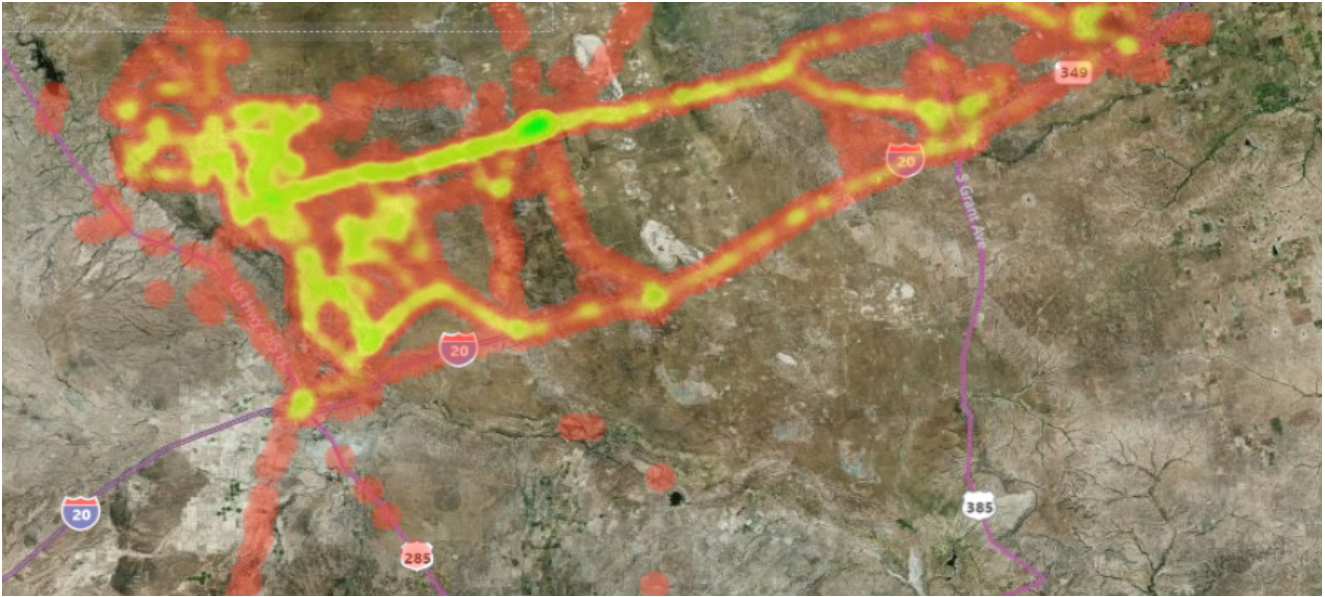
- Automatic usage and alarm reporting
- Hassle-free compliance dashboard
- All data wirelessly uploaded to the Blackline Safety Network
- Event map provides the location of confined space entries, gas exposures and alerts
- Interactive reports allow users to drill further into data and investigate specific information

blacklinesafety

www.BlacklineSafety.com

REPORTS

Blackline's connected solutions are constantly generating large volumes of valuable data. Blackline Analytics puts all this information right at your fingertips through a series of easy-to-navigate charts, graphs and tables. Each report can be used for a variety of purposes, including helping businesses make informed decisions and easily identifying areas of potential optimization.



Blackline Analytics makes it simple for users to uncover safety insights to help power informed business decisions. With built-in real-time features and cellular network coverage mapping in over 125 countries, it's easy to identify where your teams are operating and ensure their safety.

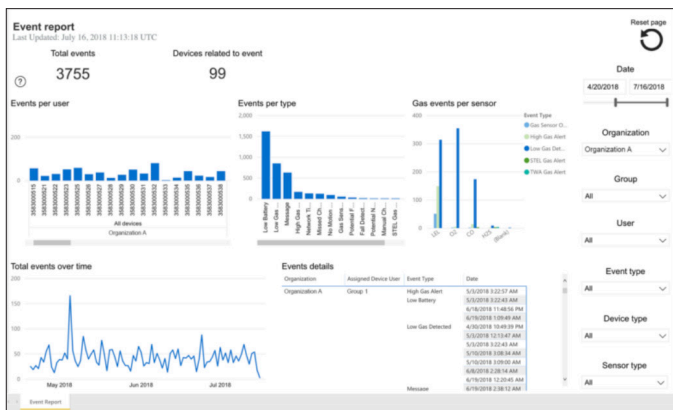
With Blackline Analytics, businesses can:

- **Increase productivity** — Utilize the Usage and Compliance Report and the Bump Test and Calibration Report to achieve a real-time view of the compliance status of your fleet without having to manually retrieve this data from the field and compile, review and report to your stakeholders. Blackline Analytics ensures you never have to sacrifice productivity when maintaining data reports.
- **Make informed decisions** — With the events map and the incidents and alerts reports, businesses can gain insights into incidents and events that workers experience in the field. This data can then be reviewed and leveraged to help make proactive and informed decisions.
- **View data from fielded G7 devices** — Blackline Analytics provides users with a complete, real-world view of the locations of their G7 devices, delivering access to the data produced by their assets over time. Users have an overview of their facilities and operations and can easily determine which areas are productive and which areas may be potentially hazardous.

EVENTS REPORT

The events report provides users with an overview of every piece of data recorded by G7s throughout the organization. Customers can use a series of filters to view information in terms of specific users, groups or event types.

This report also displays data trends over time so businesses can monitor which users are best leveraging their gas detection equipment and identify whether there are any outliers or recurring issues over time.



USE THIS REPORT TO:

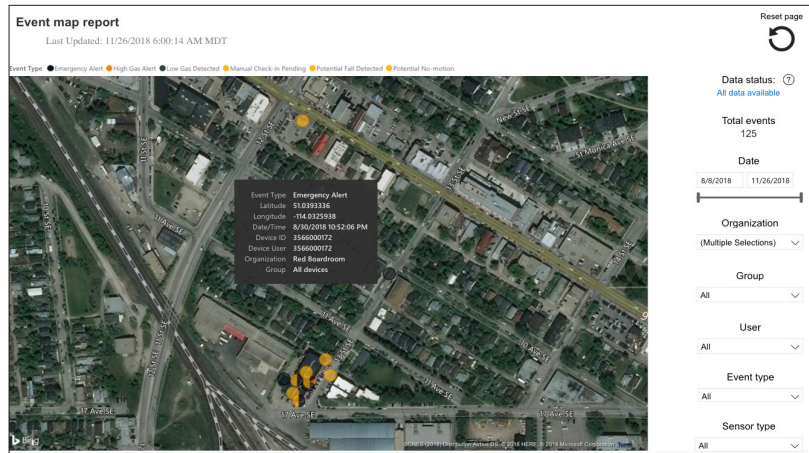
- **Track trends over time** — Choose a date range and compare data side by side. Data can be filtered by event type, date range, users and even sensor type.
- **Monitor how employees are making use of gas detection equipment** — View which users and devices are having recurring events, allowing you to easily identify whether users may benefit from additional training.
- **Track improvements in work flows and processes** — Data outlined in the events report allows users to determine which work flows are most effective and which could use improvement, helping organizations achieve better operational performance.



EVENTS MAP REPORT

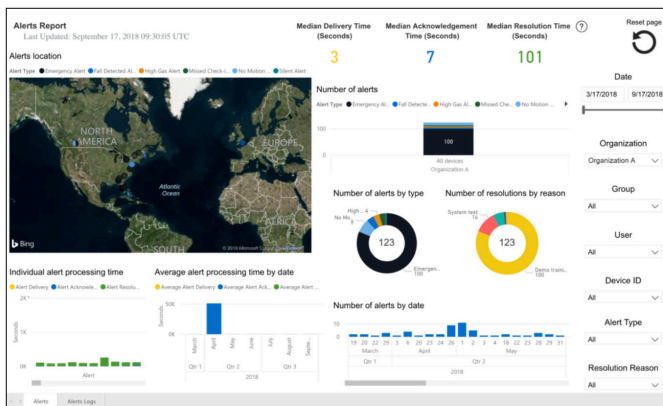
The events map report complements the events report, providing users with a map showing the direct location where an event occurred.

This provides customers with a visual tool to easily view location-enabled data and identify where a certain type of event may be happening more frequently.



USE THIS REPORT TO:

- **View the direct location where an event occurred** — Our devices are location-enabled, allowing users to view the locations of their devices in real-time. Users can determine the exact location of an incident down to the street name and building location.
- **Identify potentially hazardous areas** — Whether this be areas with frequent gas exposures or slips, trips and falls, the events report displays alert history in an easy-to-read map, allowing you to identify hazardous areas that may need mitigation.

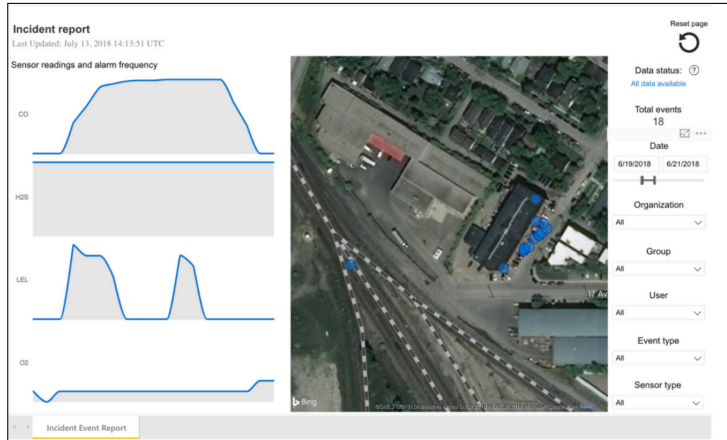


ALERTS REPORT

The alerts report gives users a breakdown of alerts occurring on their devices. With this report, users are able to view which devices are producing the most alerts at which location, and which type of alert is happening the most frequently.

USE THIS REPORT TO:

- **Determine the efficiency of response times** — The alerts report shows the location and type of alert, as well as the response time to each type of alert, allowing users to measure the efficiency of their safety monitoring team. Businesses can choose to utilize monitoring through Blackline's in-house Safety Operations Centre, which responds to 99.7% of alerts in under 60 seconds, helping facilitate worry-free monitoring and support for businesses.
- **See which alerts are trending over time** — By selecting a date range, users are able to see the number and types of alerts that have occurred over a period of time. Data can then be compared side by side to help identify which alerts are occurring most frequently to determine how to better manage them in the future.



INCIDENT REPORT

This report delivers information about a specific incident that occurred.

Users can view device gas readings during a certain point in time and map events side by side for easy comparison.

Date ranges can be selected to help determine the chronological order of events and conclude whether or not specific incidents were related.

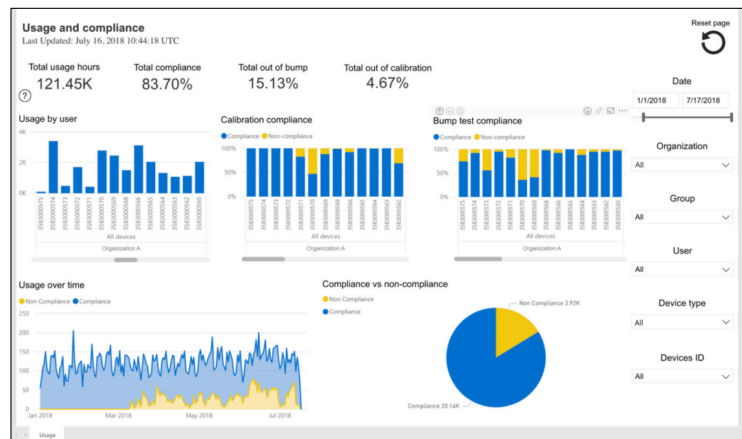
USE THIS REPORT TO:

- **Determine if events were related** — The incident report allows users to dive deeper into additional information surrounding incidents like gas exposures, slips, trips and falls. By selecting a date range, businesses can help determine the order of events that occurred and gain insight into how to optimize operations to prevent them in the future.
- **View locations of gas readings** — In the instance of a gas exposure, you need to know exactly where the exposure took place and what led up to that event. The incident report shows you the precise location of where gas was detected by a device.

USAGE AND COMPLIANCE REPORT

The usage and compliance report provides an organization with regulatory gas detection and usage compliance data per device, group or organization.

This report is a great tool to help users identify compliance trends and review how teams are using their devices and to track changes in device usage over time.



USE THIS REPORT TO:

- **Avoid having to manually retrieve compliance data from the field** — The usage and compliance report puts a summary of a fleet's compliance data in one convenient place, eliminating the labor-intensive, manual processes of retrieving and compiling this data.
- **Determine compliance status of your fleet** — Our devices allow businesses to customize their gas compliance settings, and the usage and compliance report shows users how often each device was in compliance, allowing them to determine which devices are being used properly.



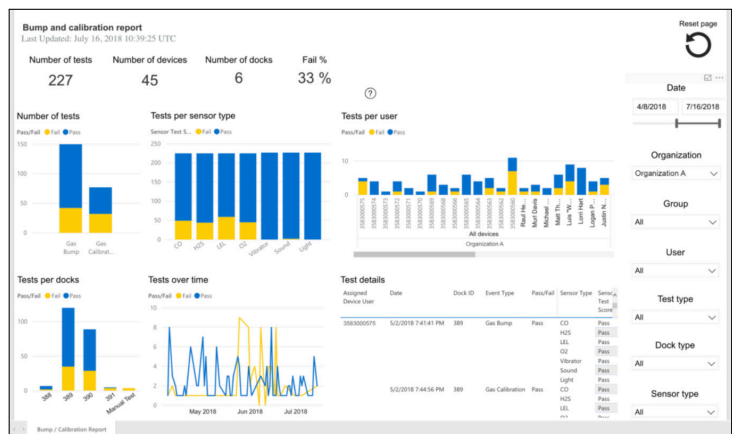
BUMP TEST AND CALIBRATION REPORT

Businesses use this report to view all of their bump tests and calibrations to determine which devices are overdue for bump tests and calibrations and which tests were performed manually or with a G7 Dock.

This report can also be broken down by G7 device or by sensor, so users can easily determine whether a sensor needs replacing or if a dock is not configured properly.

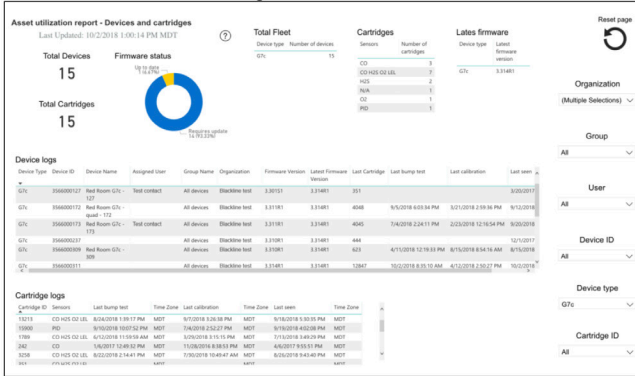
USE THIS REPORT TO:

- Ensure proper G7 maintenance** — This report highlights devices that have not been regularly tested, allowing businesses to view which user the device was assigned to, so they can follow up accordingly to adjust.
- Determine which G7s may be in need of servicing or repair** — Bump tests and calibrations confirm gas sensor performance and G7's lights, sounds and vibrations. This report gives users details into why a bump test or calibration may have failed, helping users identify whether a device may be in need of repair.



ASSET UTILIZATION REPORTS

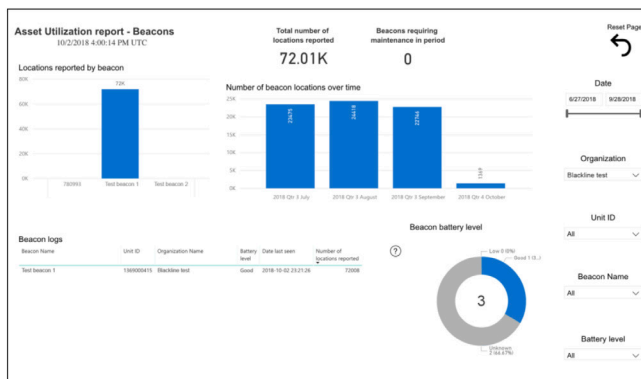
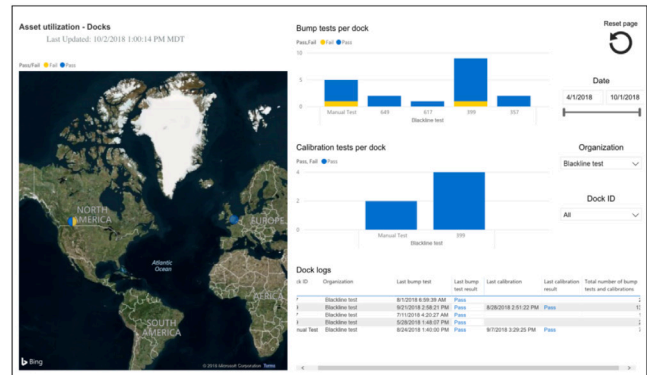
Blackline Analytics also includes reports that show additional information on a device's firmware as well as accessories that can be purchased to compliment G7's functionality.



Devices and Cartridges — This report gives users a full overview surrounding the status of their devices, including their firmware versions and when each device last communicated with the Blackline Safety Network, helping users stay on top of firmware updates and maintenance of their devices and cartridges. Users can also see the number of devices and cartridges owned by each team member.

G7 Docks — The docks report shows users information on the status and locations of their docks. This report helps users determine when a dock was last used and also allows them to track each dock's bump tests and calibrations to ensure proper performance.

With the docks report, users are able to troubleshoot and determine if problems are occurring on the dock or if the issues stem from the device itself.



Location Beacons — This report gives users insight into how beacons are leveraged. The beacon report can be used to monitor beacon battery levels and ensure locations are being communicated frequently and effectively.

BLACKLINE ANALYTICS – G7 INSIGHT

KEEP YOUR DEVICES IN THE FIELD

G7 Insight is our simple solution that bundles world-leading gas detection with real-time compliance and business analytics tools. Blackline Analytics is a key component of G7 Insight, complementing G7's connectivity by providing data for effortless review.

Usage data is automatically recorded by devices and uploaded to the Blackline Safety Network. Instead of manually compiling data to get an idea of teams' activities, G7 Insight automates confined space entry and leak check work-flows, delivering more data than ever before without any of the work.



WANT TO DO MORE WITH YOUR DATA?

Blackline offers a variety of customizable options to suit the specific needs of your business. From in-house consulting to data integration from multiple sources, we can help businesses correlate data to drive more value. Contact your Blackline sales team to learn more.

North America | Toll-free: 1-877-869-7212 | sales@blacklinesafety.com
Europe | Phone: +44 1787 222684 | eusales@blacklinesafety.com

blacklinesafety