



 **Microsoft**
Solutions Partner
Infrastructure
Azure

Specialist
Linux and Open Source
Databases Migration

 **Microsoft**
Solutions Partner
Digital & App Innovation
Azure

 **Microsoft**
Solutions Partner
Data & AI
Azure

Accelerate Growth on Cloud

Azure API Management Workshop

Agenda

- What is Azure APIM?
- Components
- What is Self Hosted Gateway in Azure APIM?
- Analytics
- Observability
- Pricing
- Monetization
- Demo

What is Azure APIM ?



Managed Service on Azure Cloud
Manage APIs across clouds and on-premises



API Orchestration
Unified management experience and full observability across all internal and external APIs.



Improve API Discovery
Create a customizable developer portal for all your APIs. Easily manage and share APIs with internal teams, external partners, and customers



Control Access
Control how data and services are exposed to employees, partners, and customers by applying authentication, authorization, and usage limits.



Secure API's
Keep all your APIs behind a single static IP or domain, and help protect them with keys, tokens, and IP filtering.

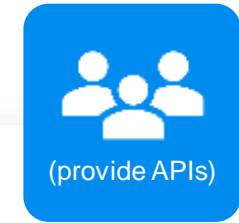
Connected experiences



(use APIs)

Developers

- Discover
- Learn
- Get access
- Try
- SDKs and samples
- Get help



(provide APIs)

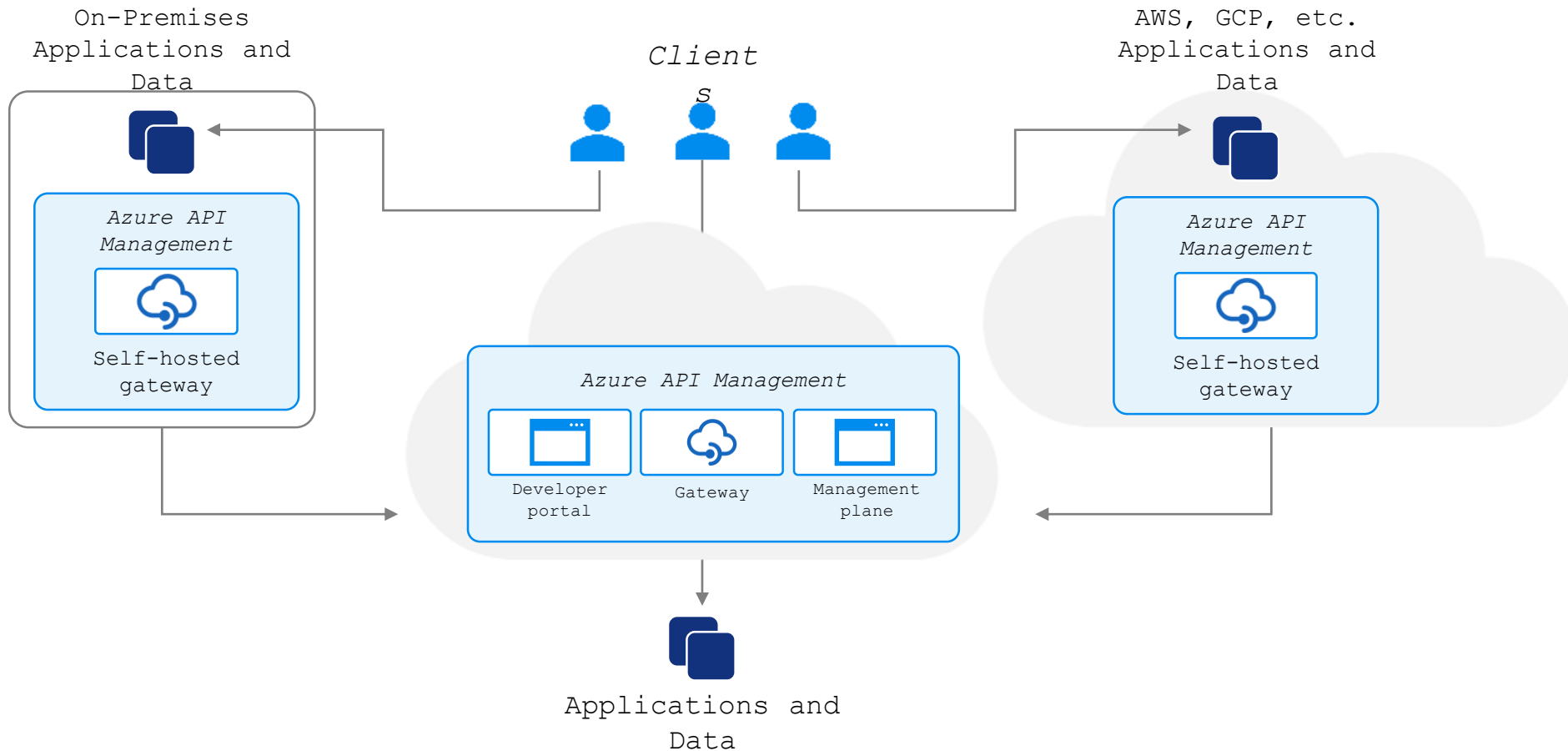
Publishers

- Hybrid multicloud API orchestration
- Secure and protect
- Manage lifecycle
- Monitor and measure
- Onboard developers
- Monetize

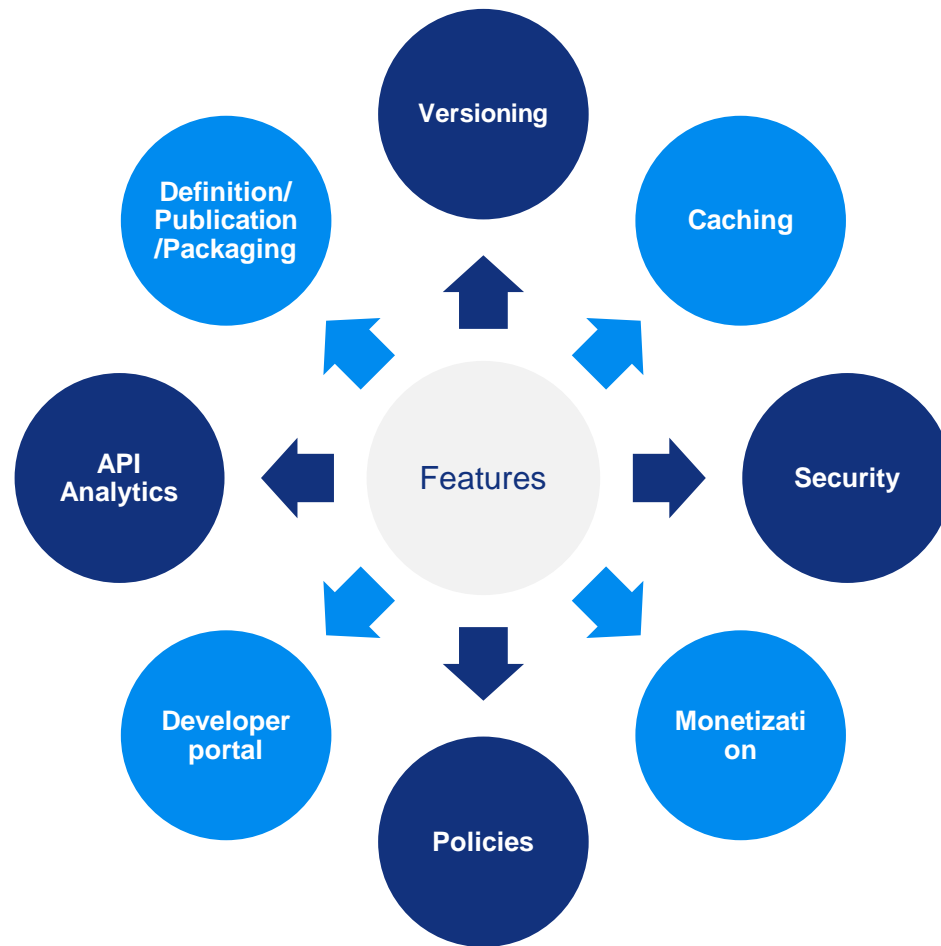


Centralize API Management Solution

Centrally can manage API's hosted on Azure, on premises or other cloud.

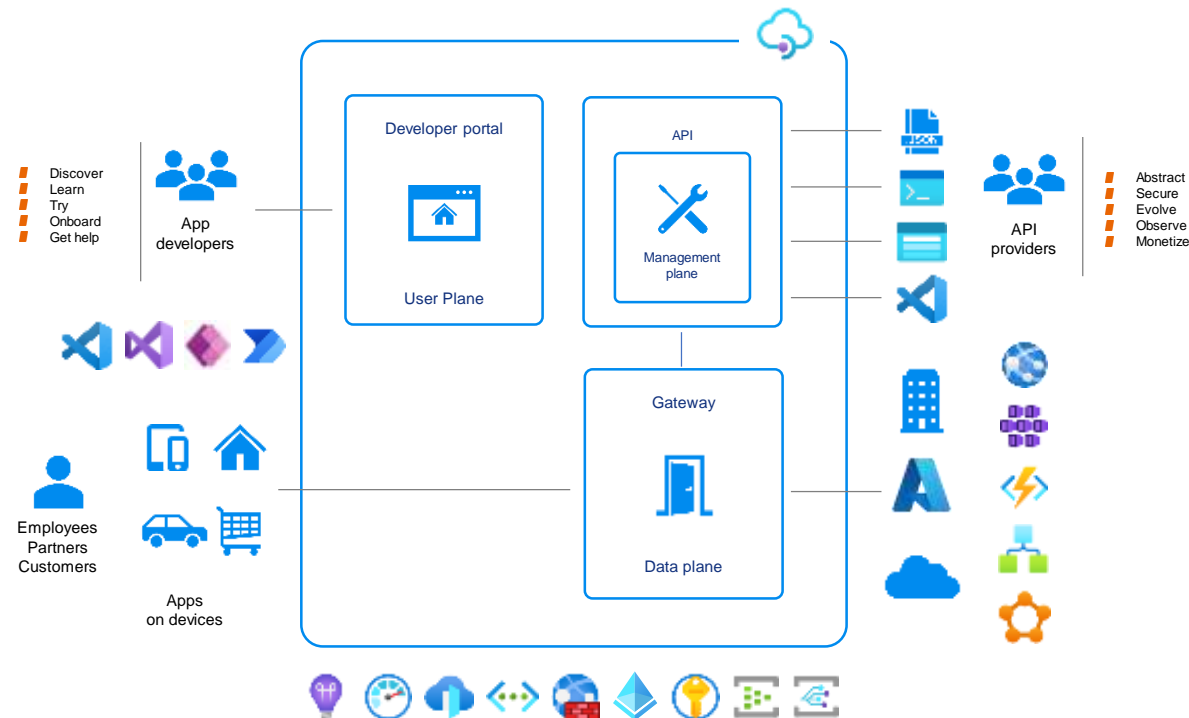


Azure API Management Features



- Microsoft Azure API Management has a range of security options like authorization keys, back-end API security, client certificates, and APIM to back-end API Mutual certification.
- Tracking APIs for errors in real time
- Reviewing usage analytics and improving APIs.
- Onboarding new users and creating great developer experience to understand APIs and try them out before usage.
- Securely expose services hosted on and outside of Azure as APIs
- Abstract backend architecture diversity and complexity from API consumers
- Support API Monetization - Controlling and billing traffic that goes through your APIs.
- API management allows you to define usage contracts based on metrics, like the number of API calls. Consumers can be segmented and differentiated access tiers, and service quality can be offered to different segments.

Azure APIM Component



API Gateway

- Accepts API Call and route them to configured backend
- Verifies API call, JWT token and Certificates
- Enforce Quotas and limit rates
- Caches response to improve latency
- Captures logs, metrics and traces for monitoring and reporting
- Can be hosted as self hosted gateway for on premises or across the cloud API management

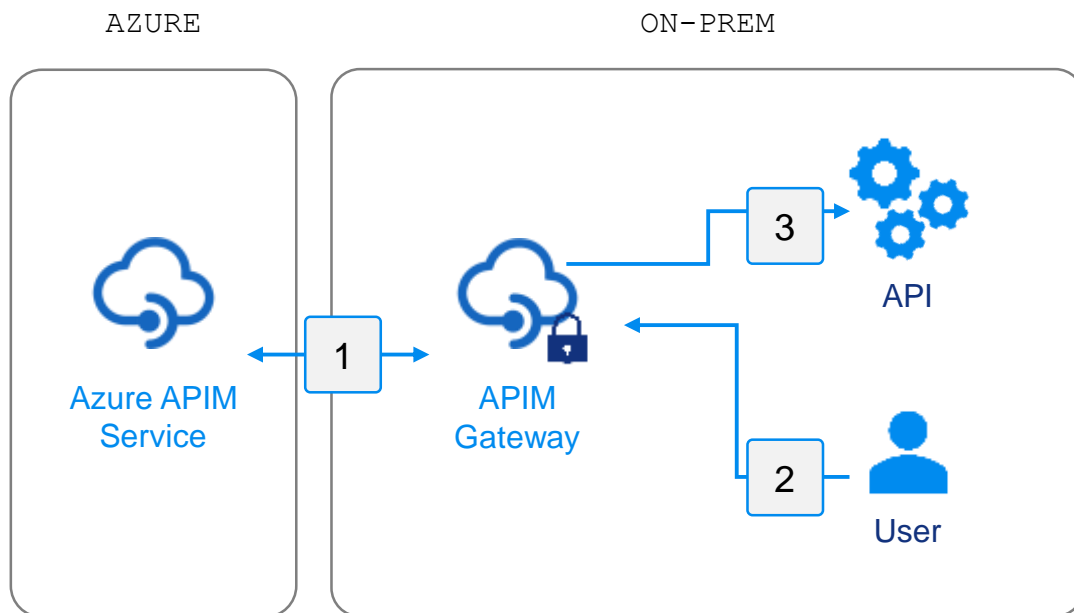
Management Plane

- Set up policies
- Configure API Management service settings
- Option to import the API definitions
- Package API's into products
- Get insights from analytics
- Manage Users

Developer Portal

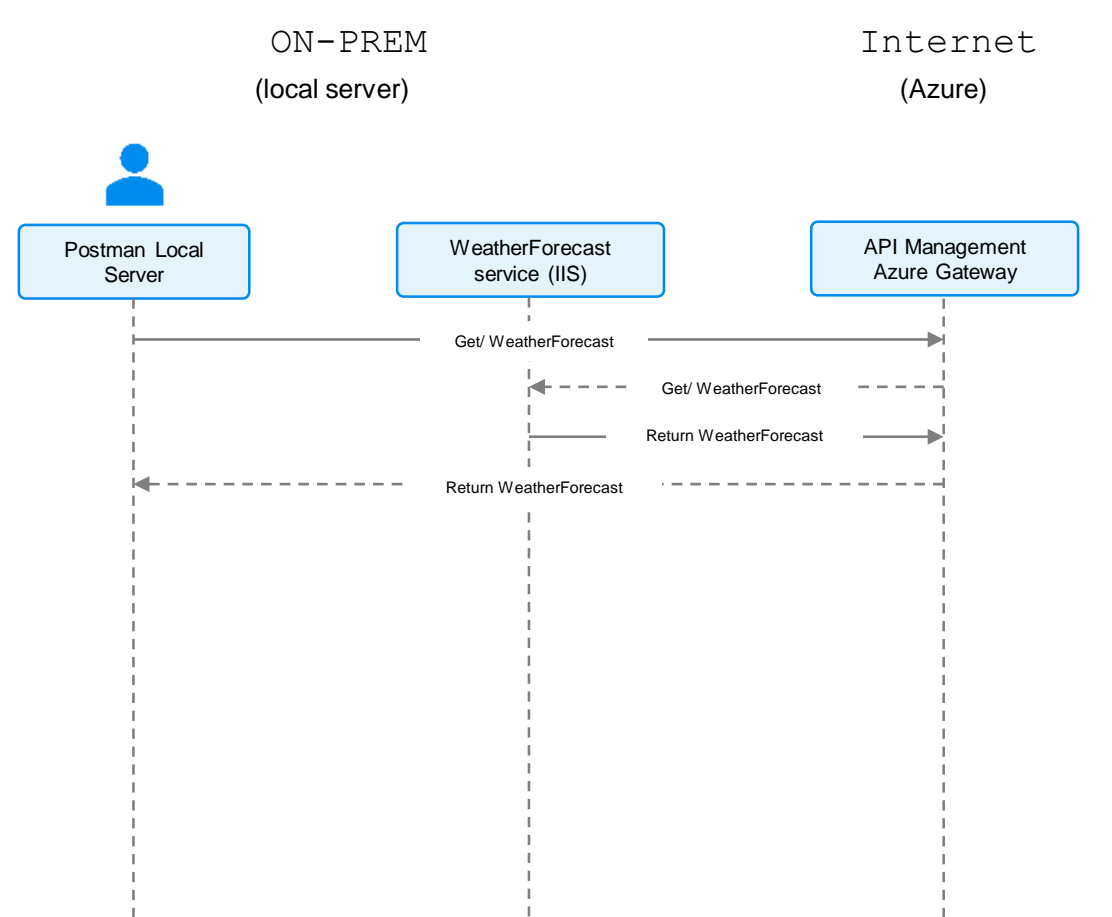
- Primarily used by developer
- Provides API documentation
- Consumed by App Developers to learn to consume the API's in application
- Download API definition
- Manage API keys
- Access to analytics to monitor individual usage
- Call API via interactive console

What is APIM Self Hosted Gateway?

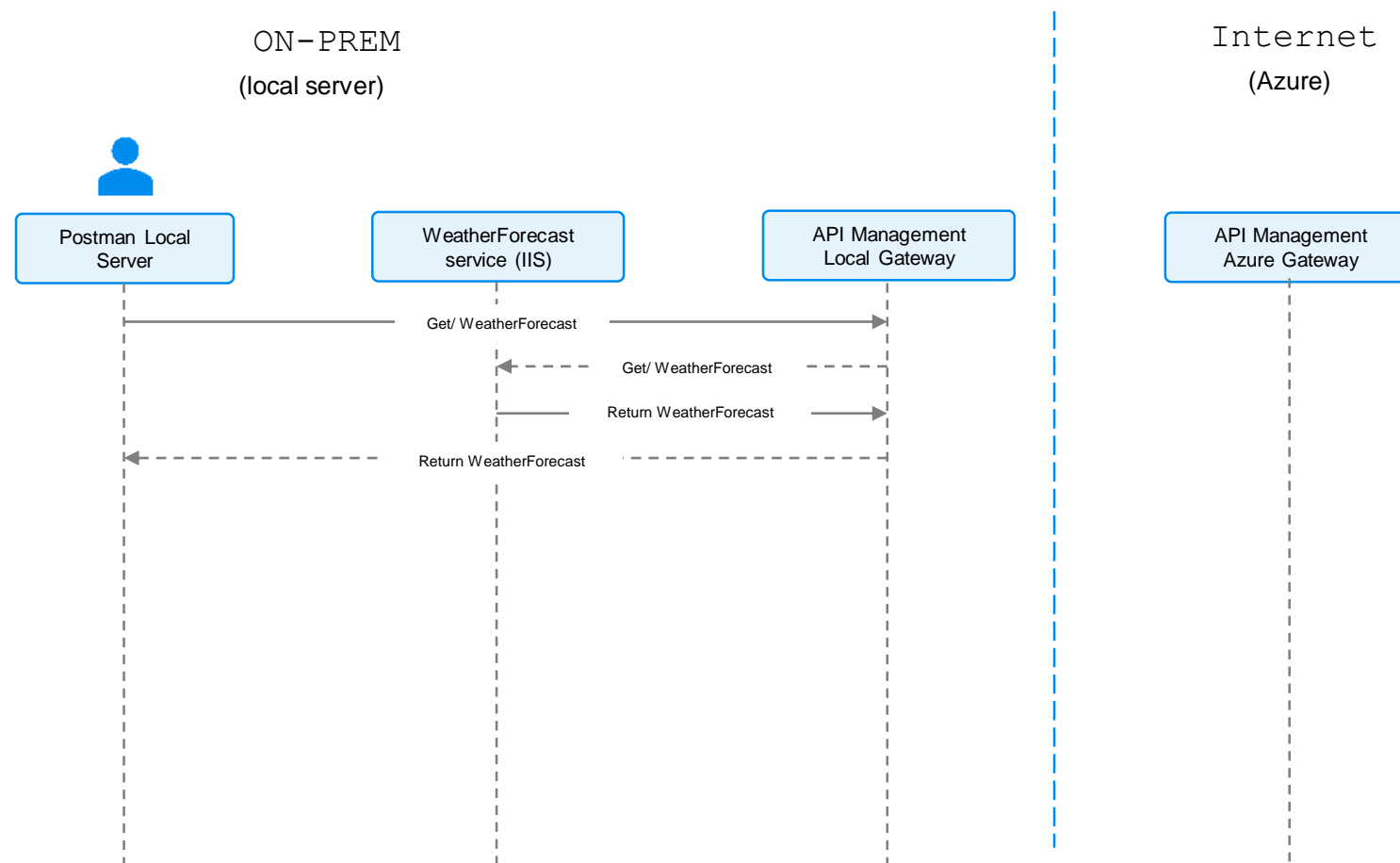


- **API Management gateway component to the same environments where APIs are hosted.**
- **Hosting API gateway close to the APIs allows customers to optimize API traffic flows and address security and compliance requirements.**
- **Reduces latency and optimizes data transfer cost.**
- **Single point discovery for all API's within organization regardless of where the implementation is hosted.**
- **Self hosted gateway is a linux based Docker container image which can be either hosted on VM or cluster.**
- **Best solution if one does not want to allow traffic to be routed outside of the local network due to security regulations.**

Traffic Flow When Azure APIM gateway is hosted on Azure



Traffic Flow When Azure APIM gateway is hosted on Azure



API Analytics Report Dimensions



Time



Geography



API Operations



Individual API



Requests



Products

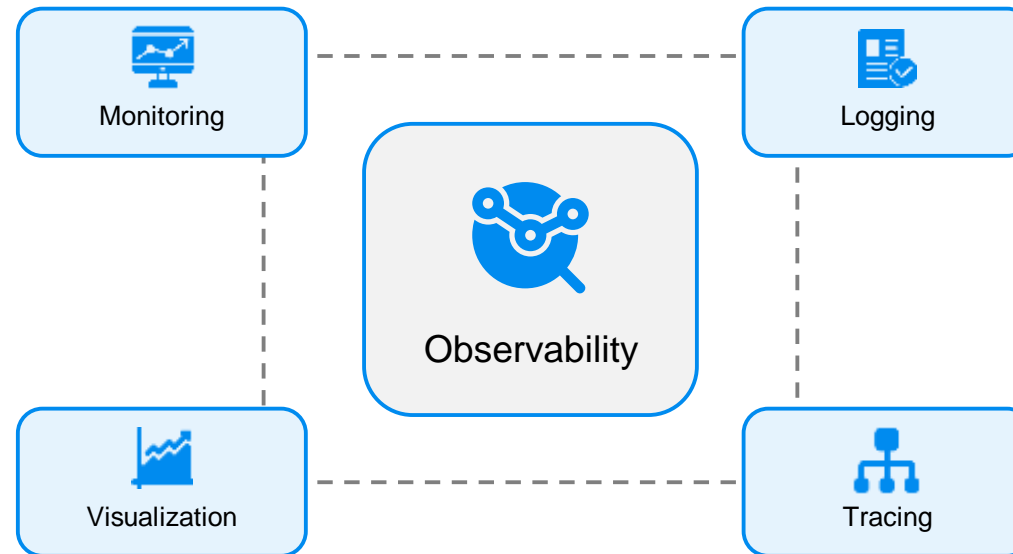


Users



Subscription

What is Observability

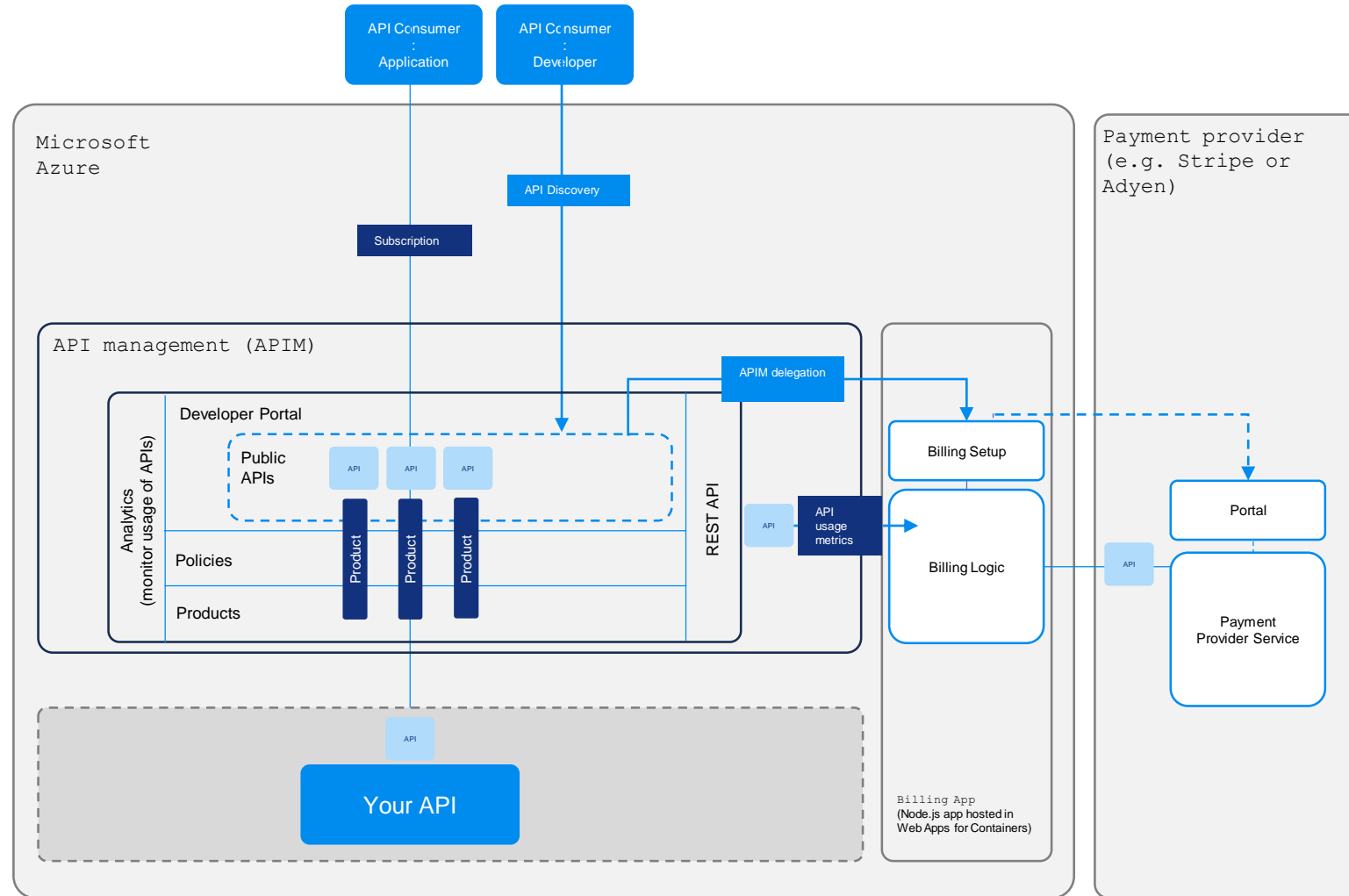


Observability is the ability to understand the internal state of a system from the data it produces and the ability to explore that data to answer questions about what happened and why.

Azure APIM Observability

Tool	Useful for	Data lag	Retention	Sampling	Data kind
API Inspector	Testing and debugging	Instant	Last 100 traces	Turned on per request	Request traces
Built-in Analytics	Reporting and monitoring	Minutes	Lifetime	100%	Reports and logs
Azure Monitor Metrics	Reporting and monitoring	Minutes	90 days (upgrade to extend)	100%	Metrics
Azure Monitor Logs	Reporting, monitoring, and debugging	Minutes	31 days/5GB (upgrade to extend)	100% (adjustable)	Logs
Azure Application Insights	Reporting, monitoring, and debugging	Seconds	90 days/5GB (upgrade to extend)	Custom	Logs, metrics
Logging through Azure Event Hub	Custom scenarios	Seconds	User managed	Custom	Custom
OpenTelemetry	Monitoring	Minutes	User managed	100%	Metrics

How Azure APIM Supports Monetization?



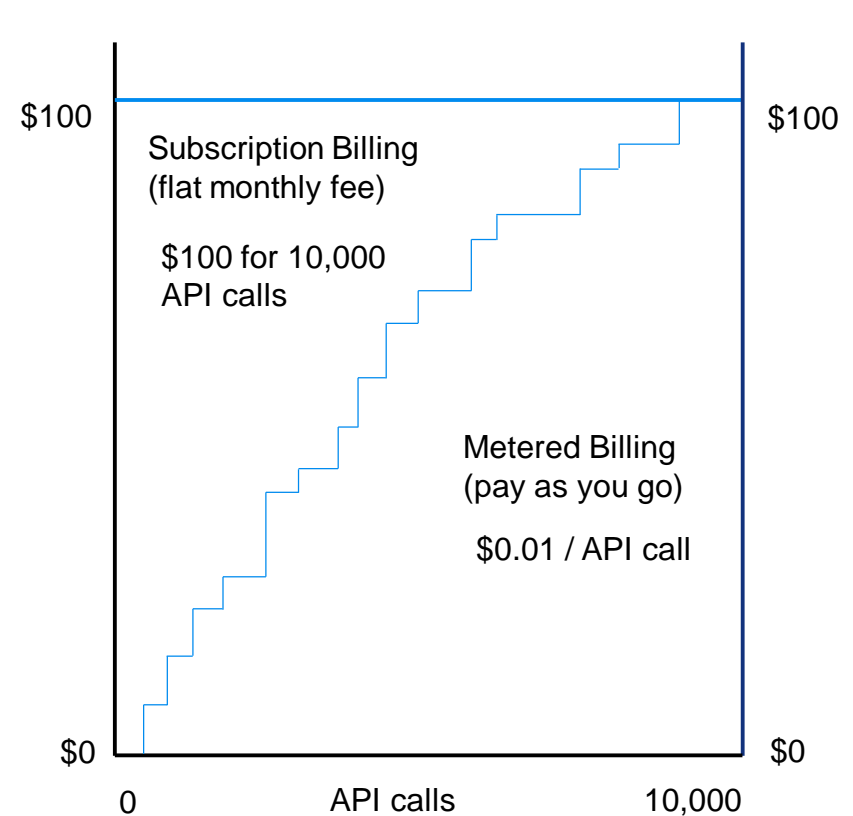
How Azure APIM Supports Monetization?

- Discover API's
- API Packaging
- Enter payment details.
- Activate your subscription.
- Consume the API.
- Monitor usage.
- Automatically pay for usage of the API.

API Monetization

Subscription Billing,
where you charge your customers a flat monthly fee to access
your APIs;

Metered Billing,
where you charge your customers based on the number of
API calls they make.



Demo

THANK

YOU

Blazeclan Technologies Pvt Ltd

Godrej Eternia C, A-Wing, 8th Floor,
Old Pune-Mumbai Rd, Wakadewadi, Shivajinagar,
Pune, Maharashtra 411005



+91 9689889138



sales@blazeclan.com



www.blazeclan.com