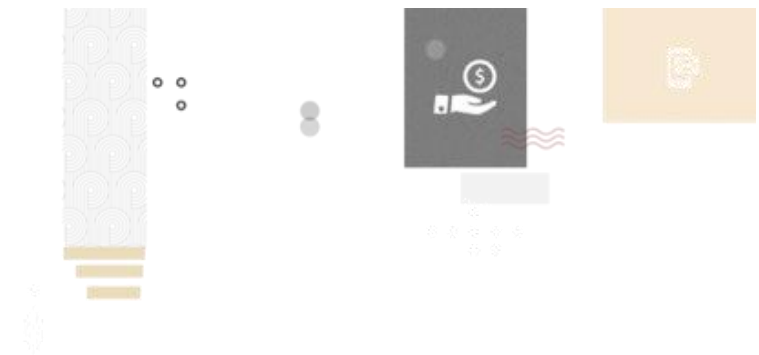


**Brickclay**

## MANAGED ANALYTICS RETAINER

Ongoing Microsoft Fabric & Power BI Managed Service



# TABLE OF CONTENTS

Managed Analytics Retainer

- Challenges & Business Impact
- Our Approach
- What You Receive
- Engagement Details



# CHALLENGES & BUSINESS IMPACT

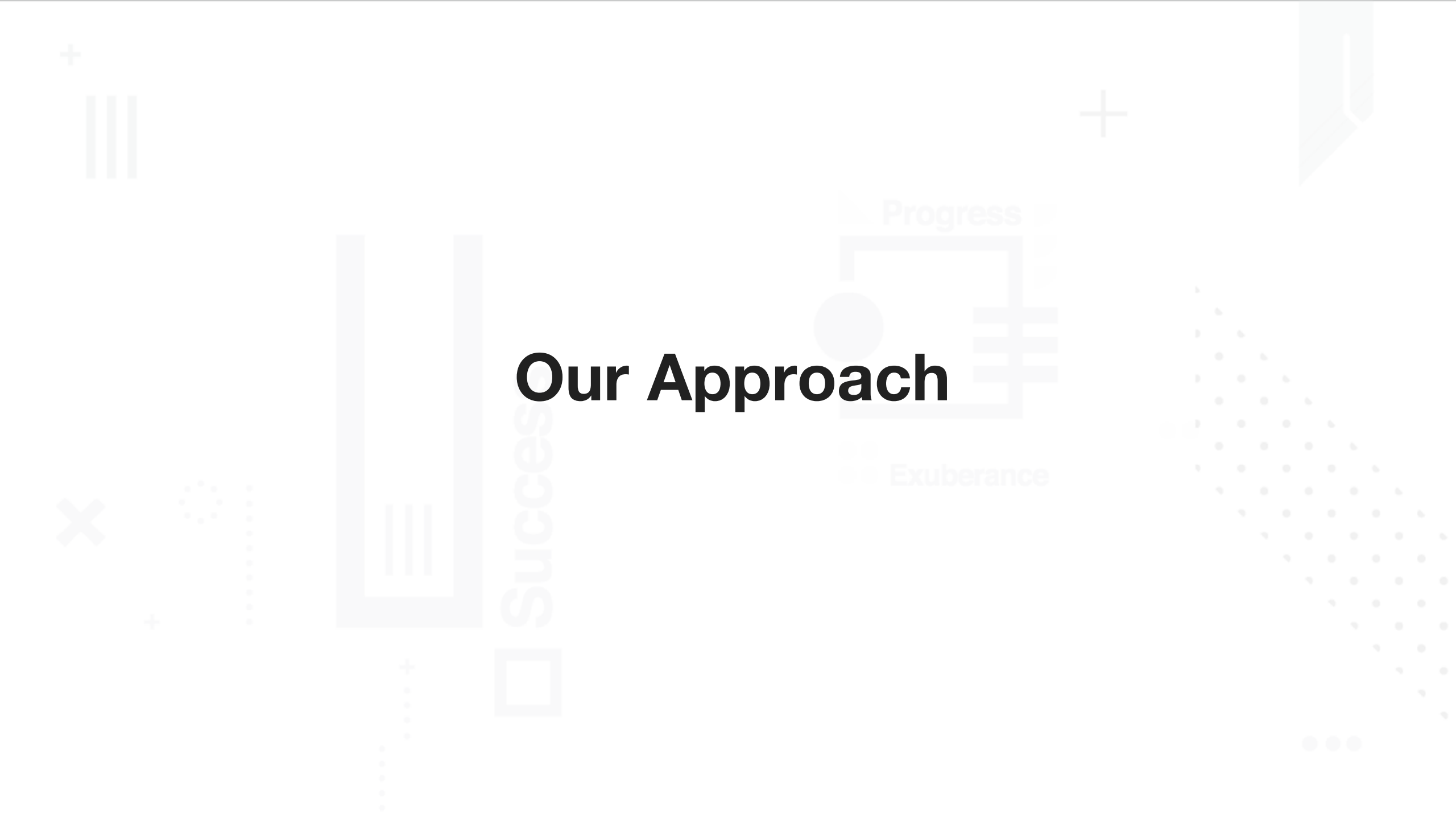
## Managed Analytics Retainer

- Analytics platforms become stale due to limited internal bandwidth.
- Continuous inflow of new data sources and reporting requirements creates backlog.
- High cost of building in-house teams (\$300K–\$500K annually).
- Critical dashboards break during source system changes or upgrades.
- Ongoing Fabric and Power BI updates require specialized expertise.
- Business demand for analytics scales faster than team capacity.
- Lack of ownership leads to inconsistent platform maintenance.
- Reactive support model results in delayed issue resolution.

## BUSINESS IMPACT

- Reduced Analytics Backlog
- Faster Issue Resolution
- Guaranteed SLA Coverage
- Continuous Platform Evolution
- Lower Operational Cost
- Reliable Dashboard Performance
- Scalable Analytics Support
- Sustained Business Value

# Our Approach



# OUR APPROACH

## Managed Analytics Retainer

### Tier 1 - Essentials (\$6k /mo)

- Up to 20 hours/month Engineering.
- Monthly Data Pipeline Maintenance.
- Report Bug Fixes & Enhancements.
- Up to 3 New Report/Dashboard Builds.
- Monthly Health Check Report.
- Dedicated Slack/Teams Channel.

### Tier 2 - Growth (\$10k /mo)

- Up to 40 hours/month Engineering.
- New Source System Onboarding.
- Semantic Model Expansions.
- Up to 6 New Report/Dashboard Builds.
- 4-hour Response SLA on Critical Issues.
- Quarterly Roadmap Review Session.

### Tier 3 - Enterprise (\$15k /mo)

- Unlimited Engineering Requests.
- AI/ML Model Maintenance & Retraining.
- Executive Analytics Advisory.
- Custom Integrations & Automation.
- 2-hour SLA on P1 Issues.
- Monthly Executive Briefing.

# What You Receive



# WHAT YOU RECEIVE

## Managed Analytics Retainer

### Monthly Analytics Health Report

Automated monitoring of pipeline success rates, data freshness, report usage, and performance metrics delivered at month-end.

### Continuous Report Evolution

New Power BI reports and dashboard enhancements delivered on a rolling basis per your business priorities — no project paperwork needed.

### Pipeline Maintenance & Monitoring

Proactive monitoring of all Fabric data pipelines with immediate response to failures and weekly maintenance windows.

### Quarterly Business Review

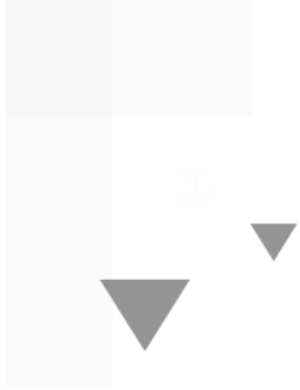
Structured QBR covering analytics adoption metrics, ROI delivered, roadmap planning, and strategic advisory.

### Priority Issue Response SLA

Guaranteed response times on critical analytics outages (dashboard down, pipeline failure, data discrepancy reports).

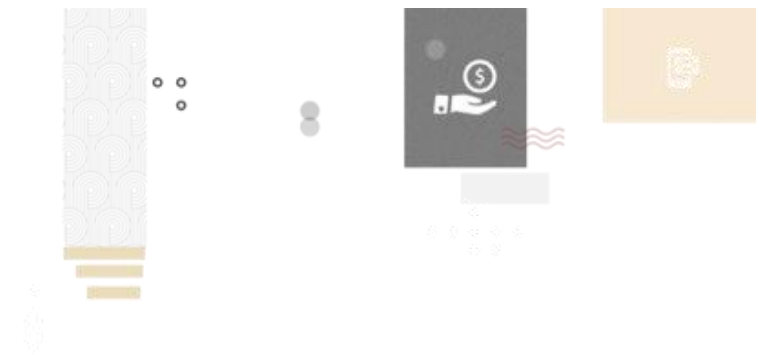
## ADJUSTABLE INVESTMENT

- \$6K+ Per month — All-in
- 4 hr Critical issue SLA (Tier 2+)
- ∞ Requests (Enterprise tier)



## READY TO START?

From \$6,000/month | No Long-Term Commitment Required





| **THANK YOU**

