

# Modernize Communications with Microsoft Teams Direct Routing




Brio Technologies Private Limited



---

# Agenda

- 
- ❑ What is it
  - ❑ Overview
  - ❑ Benefits
  - ❑ Location-based routing
  - ❑ Emergency calling in Direct Routing
  - ❑ Planning
  - ❑ Migrating from Legacy voice solution to Direct Routing
  - ❑ Health dashboard
  - ❑ Microsoft Certified SBCs

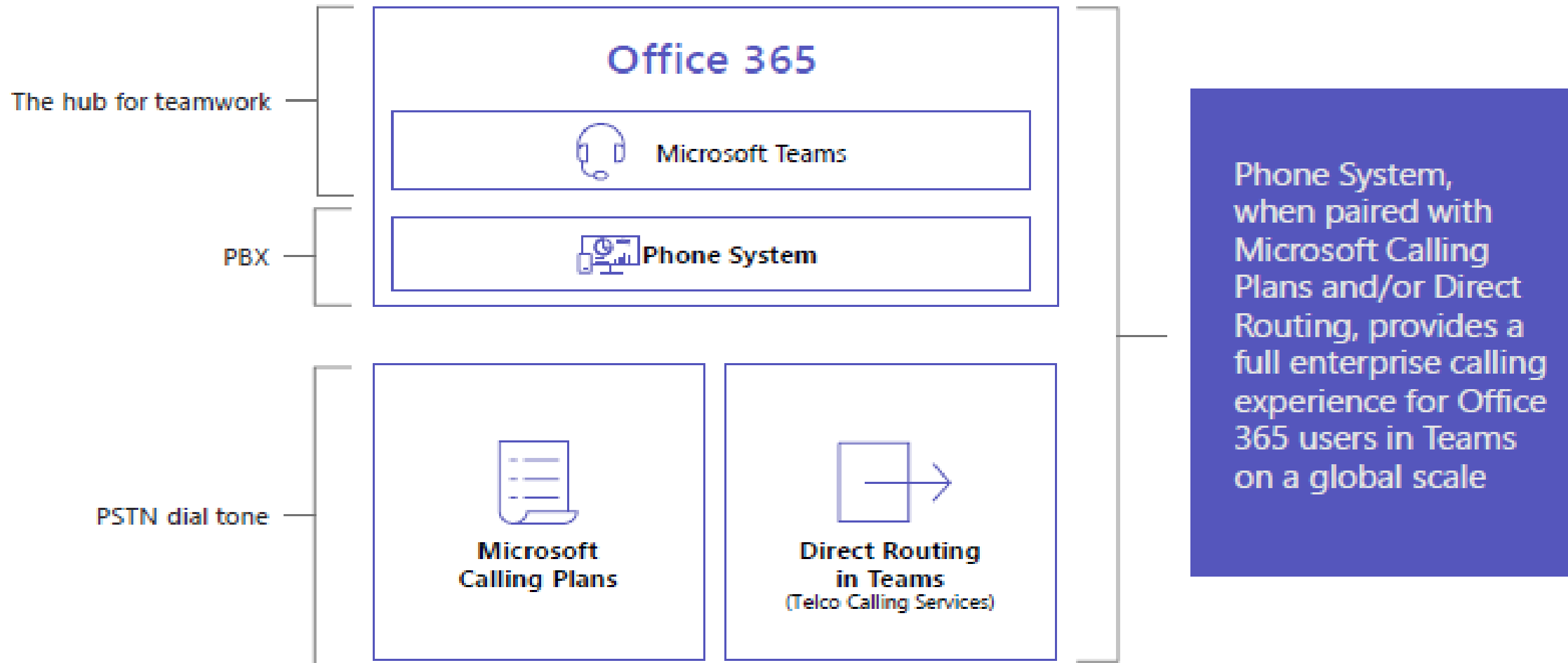


## Introduction to Direct Routing

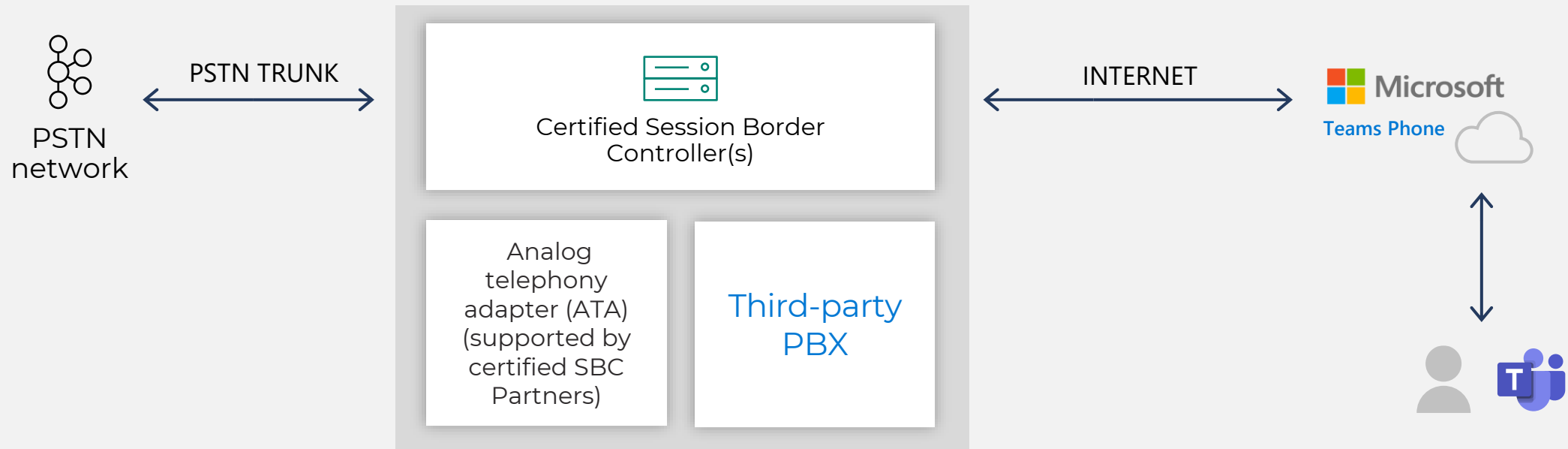
### What is Microsoft Teams Direct Routing

Microsoft phone system direct routing is **the service inside Teams that allows organizations to connect external phone lines and use Teams as an office phone system**. It gives businesses the ability to bring their existing Public Switched Telephone Network (PSTN) connection to Microsoft Teams users.

# Microsoft Direct Routing Topology



# Overview of Direct Routing for Microsoft Teams



## Connect own PSTN trunk

For countries where Microsoft Calling Plans are not available

Customers that want to keep existing telco contract

## Interoperability with third-party systems

Mix two systems (for example, provide the option to connect analog devices)

# Direct Routing benefits

Interoperability  
with third-party  
systems

Leverage existing  
contracts with  
service providers

Single DID for  
every user

Where Calling  
Plans not available

Can be combined  
with Calling Plans

Less Hardware  
Footprint  
(compared to  
Skype for Business)

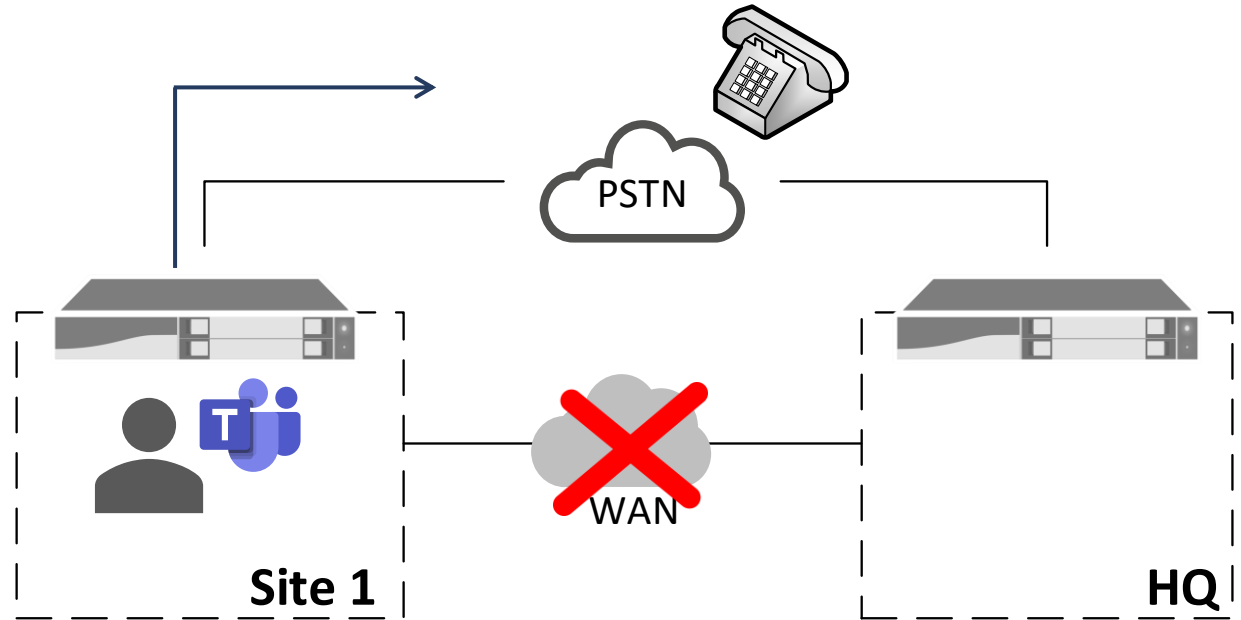
## Location-based routing in Teams Direct Routing

In some countries and regions, it's illegal to bypass the Public Switched Telephone Network (PSTN) provider to decrease long-distance calling costs.

Location-based routing is a feature that lets you restrict toll bypass based on policy and the user's geographic location at the time of an inbound or outbound PSTN call.

Location-based routing is intended to provide a mechanism to prevent toll bypass.

It shouldn't be used as a mechanism to dynamically route PSTN calls based on the location of the user or unintended consequences may result.



# Emergency calling in Direct Routing

Route emergency calls based on the known location of the Microsoft Teams client



Call routing service included for Microsoft Calling Plan users



Direct Routing users must obtain additional service [emergency routing service providers]



Direct Routing can also leverage Emergency Location Identification Number [ELIN] gateways



**Optional:** Configure security desk notifications



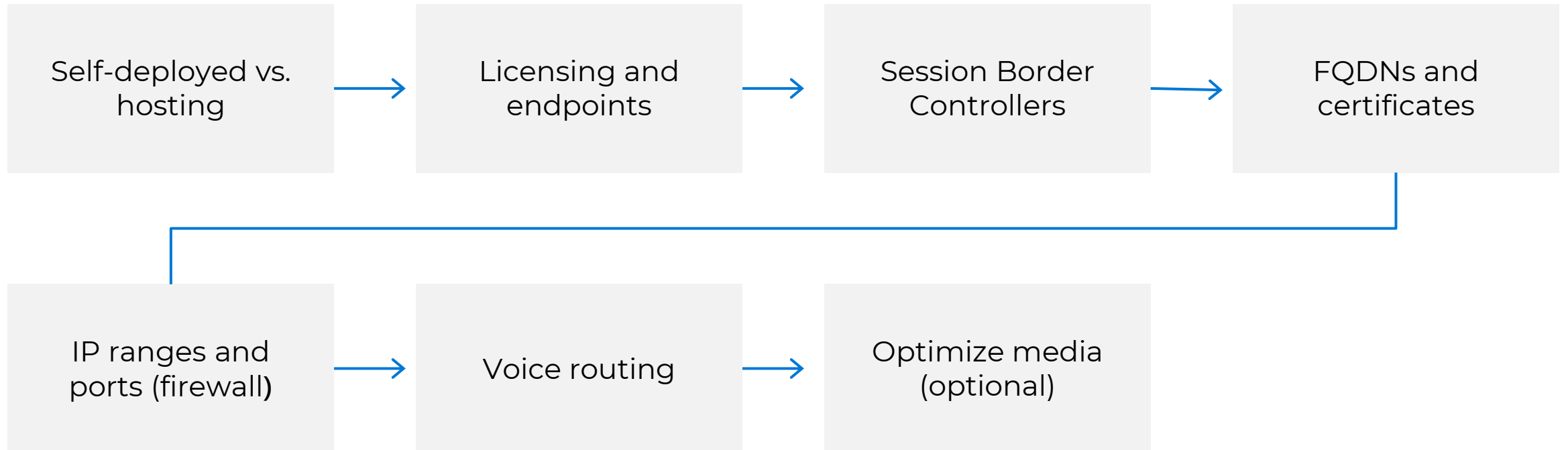


# Planning for Direct Routing

With Brio Solution Design Team



# Planning steps



# Direct Routing deployment options

Direct Routing allows for Hosted SBC model  
Multi-tenancy for scale

## Customer premises model

The SBC is deployed at the customers premises  
An SBC is connected only to one tenant

## SBC hosting model

A carrier hosts an SBC in their datacenter / Azure  
One SBC interconnected to one or many tenants

## Customer premises model

## Service provider hosting model

SBC deployed	Customer premises	Carrier datacenter or Azure
SBC serves	One tenant	One tenant or multiple tenants
Certificate requirements per SBC	One	One
Number of IPs per SBC	One	One

# Self-deployed vs. hosted SBC

## Direct routing allows for hosted SBC model

Allows partner to offer single or multiple SBCs with single certificate to multiple customers

## Checklist for partners

Currently no certification program from Microsoft

Be sure you understand cost structure, support process, partner architecture and to test for quality

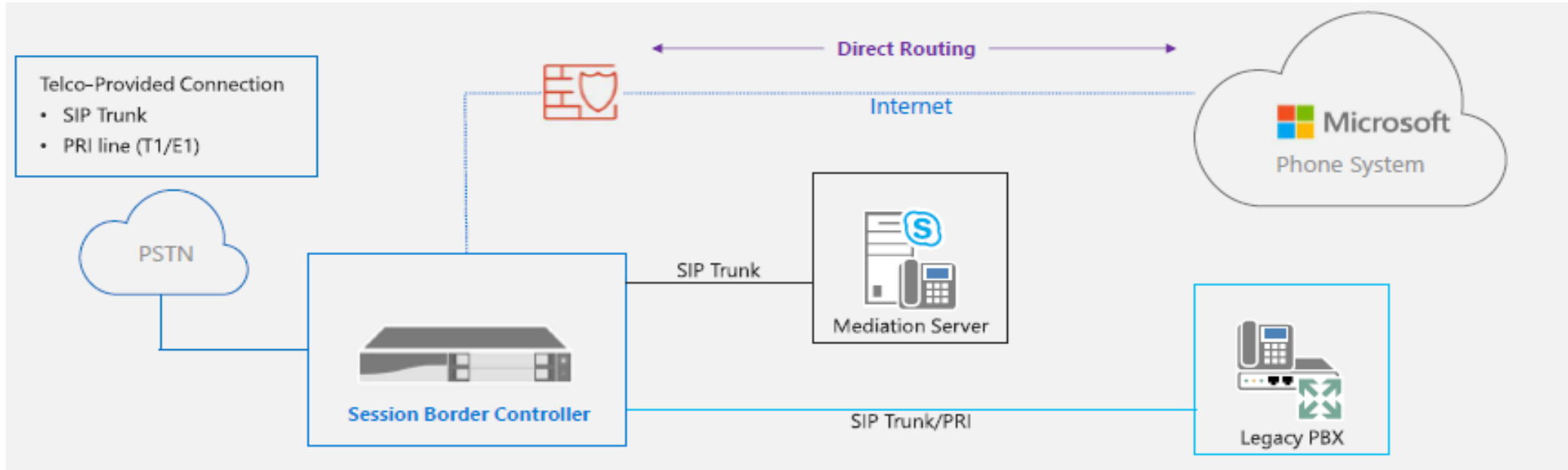
	Self deployed SBC	Partner hosted SBC
<b>Benefits</b>	Full control over SBC Connectivity to existing PBX	No need for purchasing, maintaining and hosting own SBC
<b>Disadvantages</b>	Customer responsible for SBC configuration Need to purchase, maintain and host SBC	No control over SBC configuration Support model more complex

# Migrating to Direct Routing

assisted by Brio Deployment Team



# Voice to Direct Routing - Migration Topology



Placing the Session Border Controller ( SBC ) at the “front of the line”

Routing logic is anchored on the SBC

# Key Requirements

## Direct Routing requires the user to be Teams Only mode

A voice routing policy must be assigned to users

Allow private calling must be enabled at the tenant level for Microsoft Teams

“Telephone Number” attribute must be populated correctly in Active Directory (E164 format) when identities are synchronized

Provision user for Enterprise Voice and hosted voicemail





# Direct Routing considerations

## Service numbers

Designed to handle high concurrency of calls

Call queues, auto attendant – supported through Direct Routing

Conferencing – not available through Direct Routing (except in GCC-H/DoD)

1. Dial in numbers are provided by the conferencing service (Microsoft numbers)
2. Dial back from a conference will be initiated from the conference bridge (not through Direct Routing)

## Dynamic emergency calling

Available for Calling Plans and Direct Routing

Direct Routing requires additional emergency routing service provider: <https://aka.ms/dr-sbc>

See <https://aka.ms/TeamsAcademy> for deep-dive session

Direct Routing is supported in Microsoft Teams





# Licensing and endpoints

## Licensing

Microsoft Teams Phone

Microsoft Teams + Skype for Business Plan 2, if included in licensing

Microsoft Audio Conferencing\*

1. Required for adding external participants to scheduled meetings (dial in/dial out)
2. Ad-hoc conferencing behavior dictated by this license

## Endpoint support

Any Teams client

Common area phones

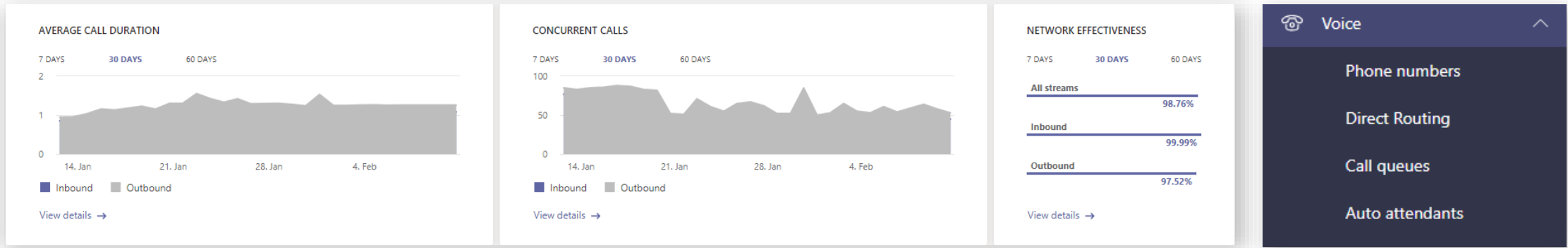
Skype for Business 3PIP phones  
(<https://aka.ms/3pip> for limitations)



# Direct Routing: Health dashboard

Tenants that have Direct Routing configured have basic health parameters widgets on “Microsoft Teams dashboard”

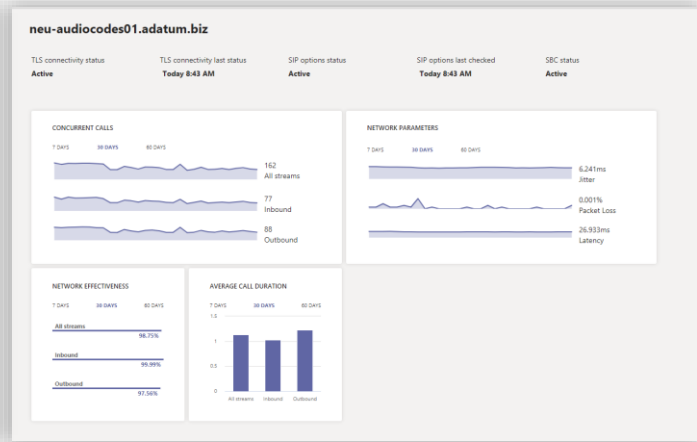
Details can be accessed from the “View details” on widgets or in menu – “Voice” -> “Direct Routing”



**Direct Routing**

Direct Routing lets you connect a supported Session Border Controller (SBC) to Microsoft Phone System to enable voice calling features. For example, you can configure on-premises PSTN connectivity with an SBC to send and receive calls from a user with the Teams app. Learn more

SBC	Network effectiveness (Calls)	Average call duration (Calls)	TLS connectivity status	SIP options status	Concurrent calls capacity
sbc.ge.com	0% (0)	0 sec (0)	Inactive	Warning	Capacity isn't set
www-audioCodes01.adatum.biz	0% (0)	0 sec (0)	Inactive	Warning	Within limits
neu-audioCodes01.adatum.biz	100% (36617)	1:18 mins (29735)	Active	Active	Within limits
tl-sans02.adatum.biz	0% (0)	0 sec (0)	Active	Active	Capacity isn't set
customers.adatum.biz	0% (0)	0 sec (0)	Inactive	Warning	Capacity isn't set
sbc100.adatum.biz	0% (0)	0 sec (0)	Inactive	Warning	Capacity isn't set
sbc08.adatum.biz	0% (0)	0 sec (0)	Inactive	Warning	Capacity isn't set
sbc09.adatum.biz	0% (0)	0 sec (0)	Inactive	Warning	Capacity isn't set



Details page has overall status of all SBCs connected with option to drill down further on each SBC

# Build Direct Routing with ...

Microsoft certified SBCs from certain vendors that can be used for Direct Routing and its capabilities



Thank you.

