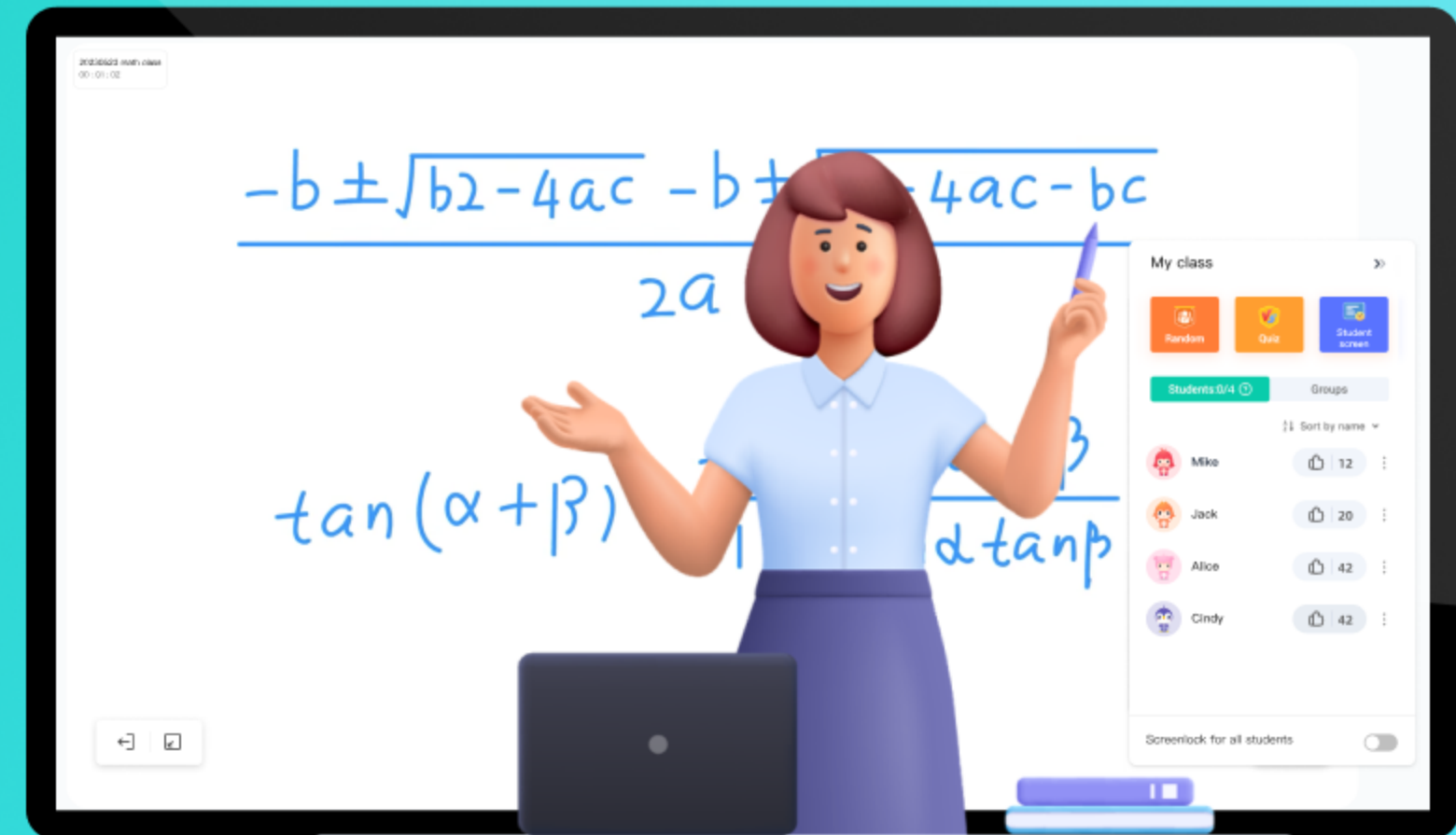


Bytello Class Pro connects teachers and students, promoting knowledge sharing

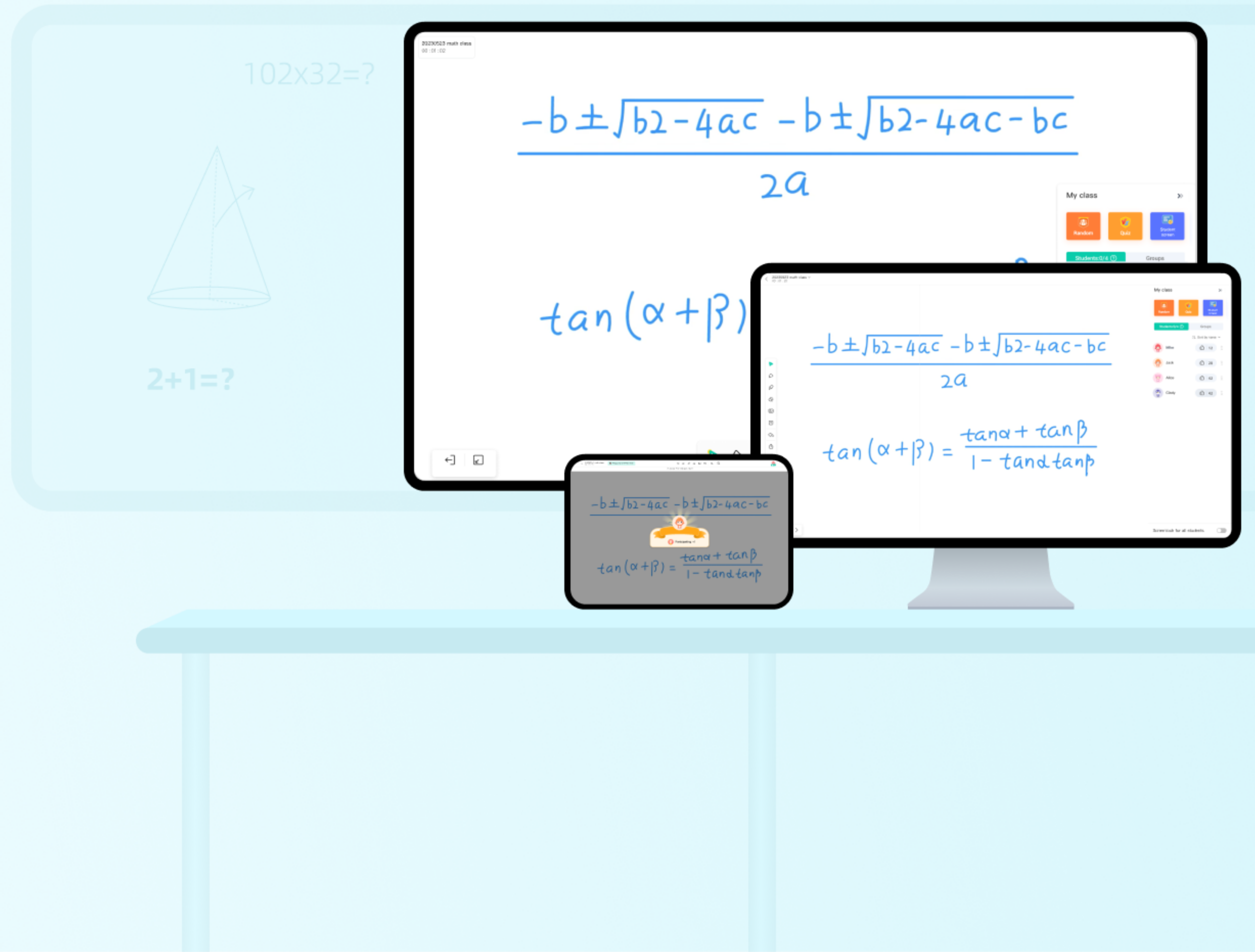
It focuses on teaching scenarios and facilitates interactive teaching through collaborative classrooms. Additionally, it captures classroom knowledge and supports personalized post-class learning.



Make every class alive

Multiple device connections

- Access course materials across different devices for instant interaction.
- Teaching is no longer limited to one device, enabling full engagement between teachers and students.



Collaborative teaching

- Ensure students stay connected with the teacher's presentation in real-time, preventing them from missing vital information.
- Teachers can use annotations to highlight key points, visually guiding students' focus.



Interactive creativity

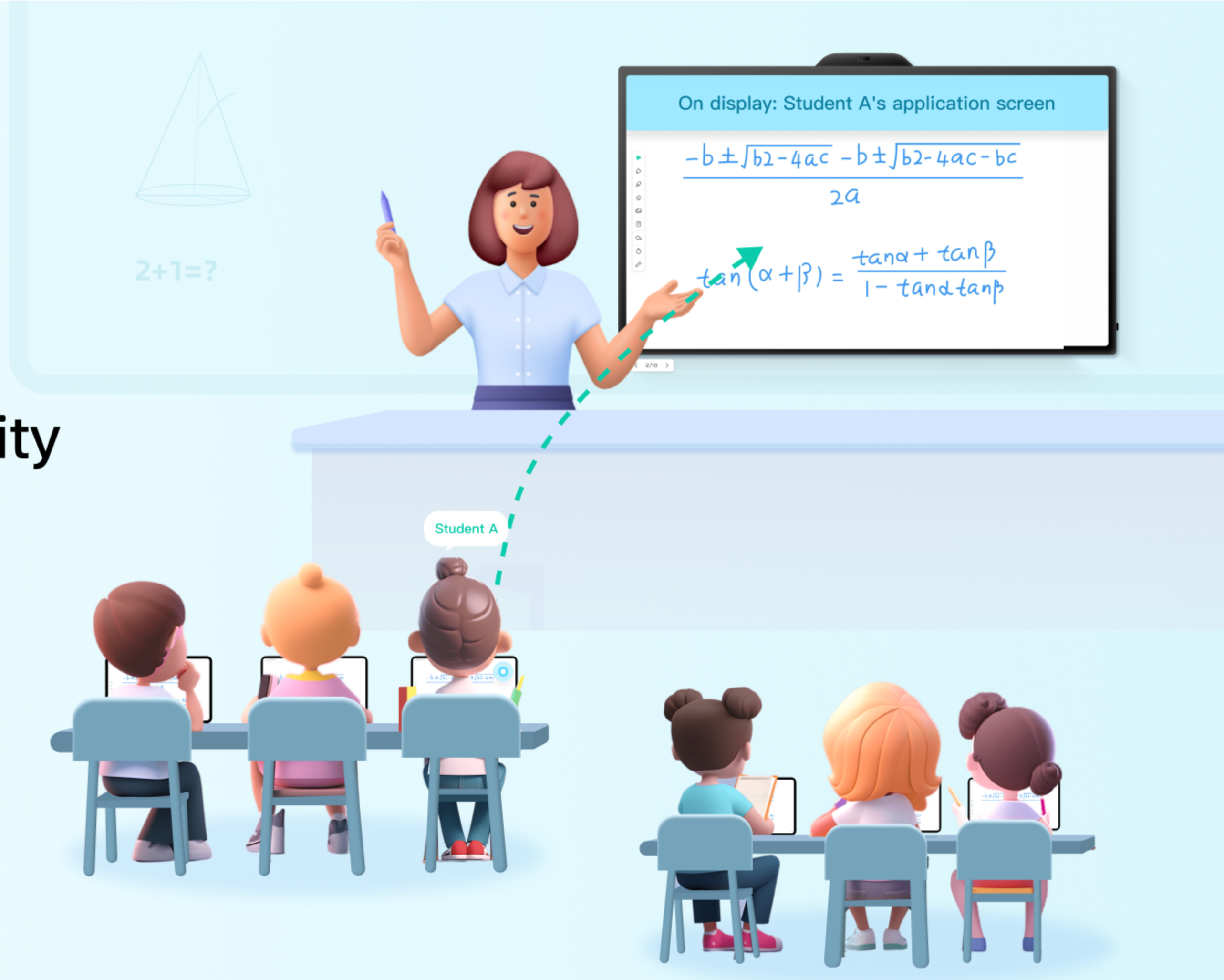
- Facilitate communication and collaboration among students by randomly grouping them.



Interactive creativity

- Class Pro also offers built-in quizzes for quick assessment of the whole class, accompanied by feedback to motivate learning and boost confidence.





Interactive creativity

- Teachers can monitor students screens and share outstanding group achievements.

Efficient classroom management

- The student's view automatically follows the teacher, keeping up with the pace and avoiding missing crucial parts.
- Teachers can activate focus mode, directing students' attention solely to the teacher and minimizing distractions from other applications.



Make every class extraordinary

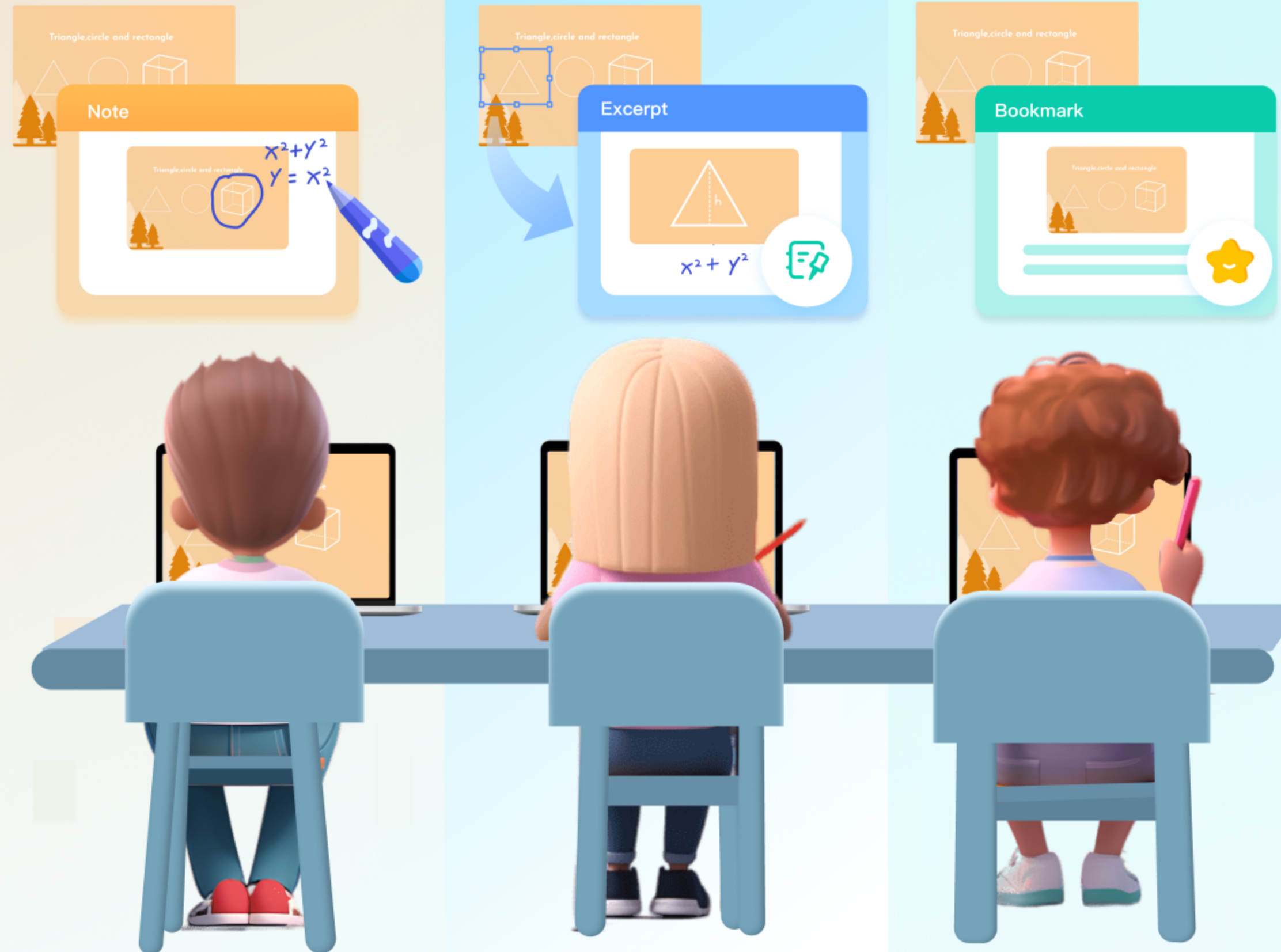
Cloud backup

- Every wonderful annotation, answer to a question, and student attendance in the classroom deserves to be treasured.
- Class Pro automatically saves course materials, whiteboards, interactive data, and student note excerpts.



Personalized learning

- In class, students use note-taking and excerpting features to mark key points and organize their notes and reviews according to their preferences after class.
- Class Pro will also introduce AI capabilities to customize learning plans based on students' abilities.



Intelligent classroom analysis

- After the class ends, Class Pro automatically conducts data analysis and mining. Homework accuracy, knowledge mastery, student progress, and more are all visible in one graph, providing teachers with data-based decision making for teaching.



Make every preparation efficient

Use existing lesson formats

- Teachers can easily use their existing course materials like Word, PowerPoints, PDFs, Smart Notebook, and Google Slides for lesson preparation without any difficulties in adjusting or converting them.



Seamless connection

- Class Pro now allows teachers to easily start their classes by importing class information and student lists from Google Classroom with just one click. This eliminates the need for manual input and makes class management more efficient.
- In the future, Class Pro will support more Learning Management System(LMS) platforms.

