



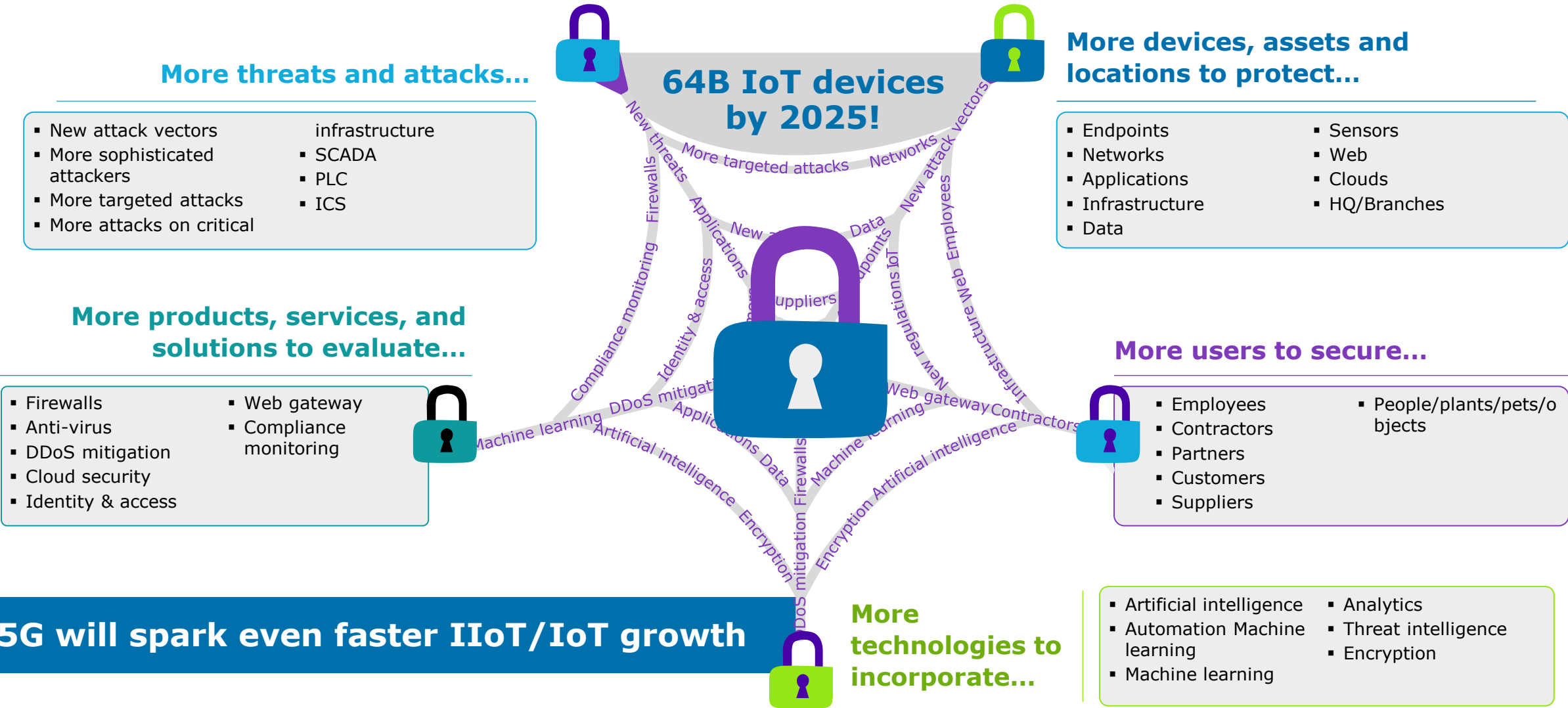
## Secure IoT/OT Services

Securing your critical IoT/OT infrastructure with our converged OT/IT/IIoT solutions.

June | 2021



# IIoT/IoT growth multiplies security challenges

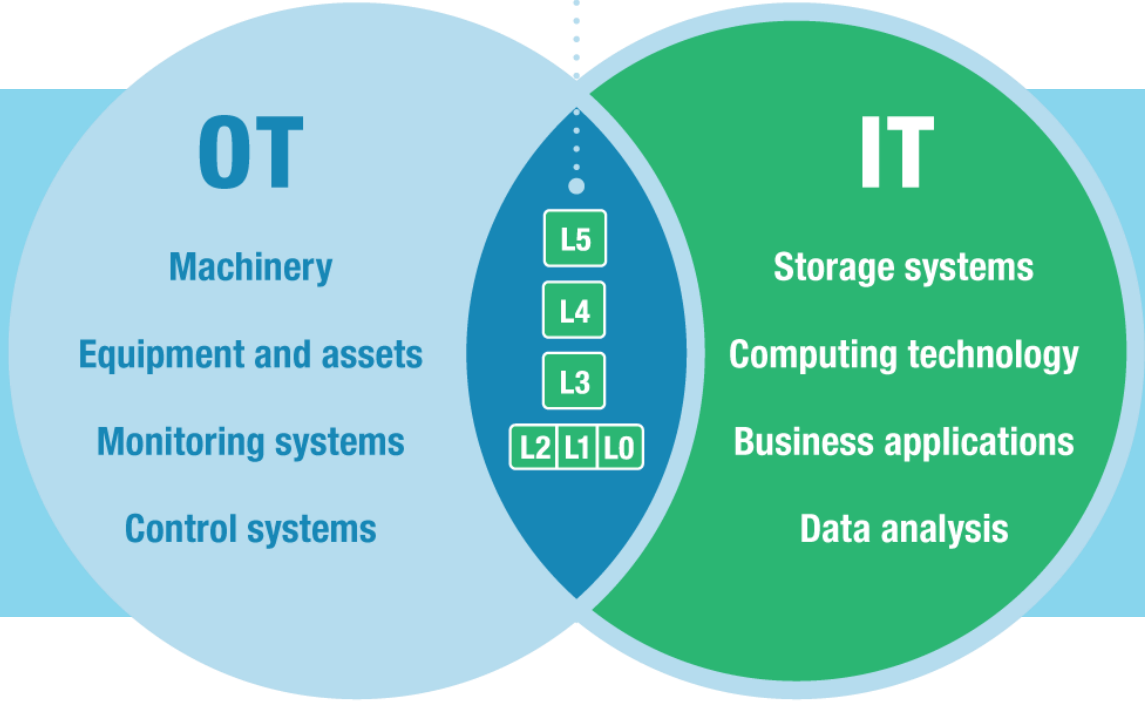


# OT/IT convergence further complicates IoT security



**While there are still distinctive OT security and IIoT security markets, the direction of this market is to converge IIoT into a "digital security" market covering IT, OT, IoT and the physical security markets today.**

--Gartner Market Guide for Operational Technology Security, 2018



- **More layers to secure**
- **Higher criticality**
- **More compliance requirements**
- **Greater need to scale security**
- **Skill shortages in OT/IT/IoT security**





## IoT security today: ineffective and expensive

**84%** of organizations that have adopted IoT have experienced an IoT-related security breach.

**90%** of industrial companies have experienced a cybersecurity breach.

**50%** of industrial companies have experienced a breach within the last year.

**80%** of security professionals say IoT breaches are more expensive to find and fix than traditional security incidents.

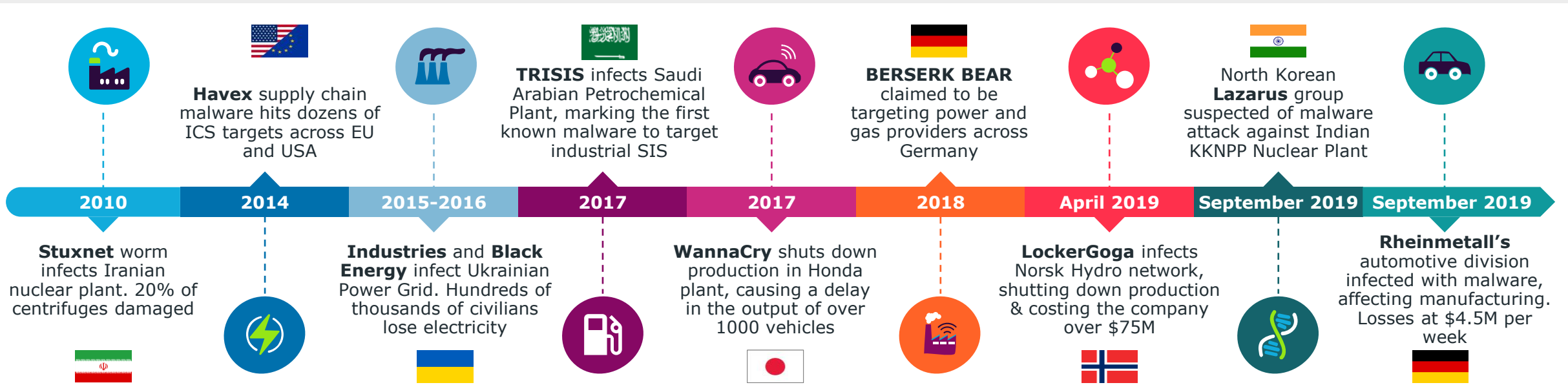
Sources:

1&2: Gartner: "[Scenarios for the IoT Marketplace, 2019.](#)"

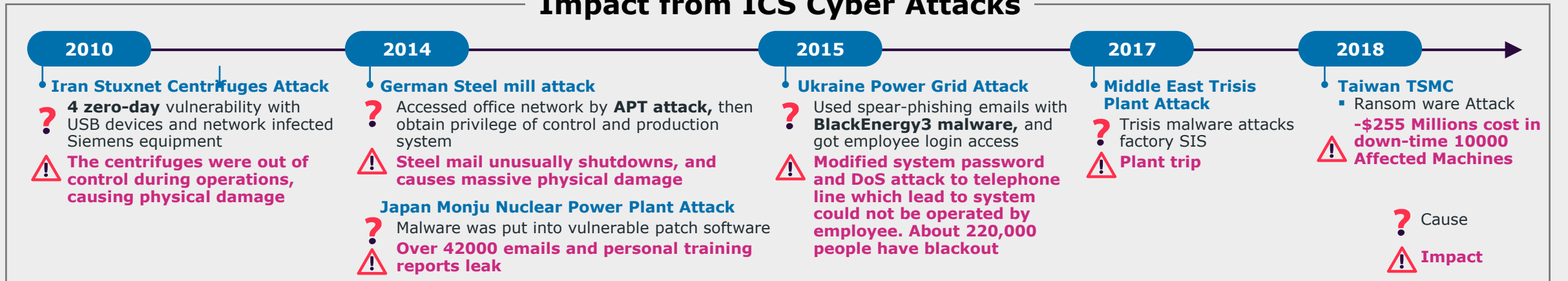
3: Aruba Networks, 2018

4. IDC: "The State of IoT Security, December 2018."

# Industrial Attack Timeline & Impact



## Impact from ICS Cyber Attacks





## Capgemini Secure IoT/OT Services: “Converged OT/IT security”

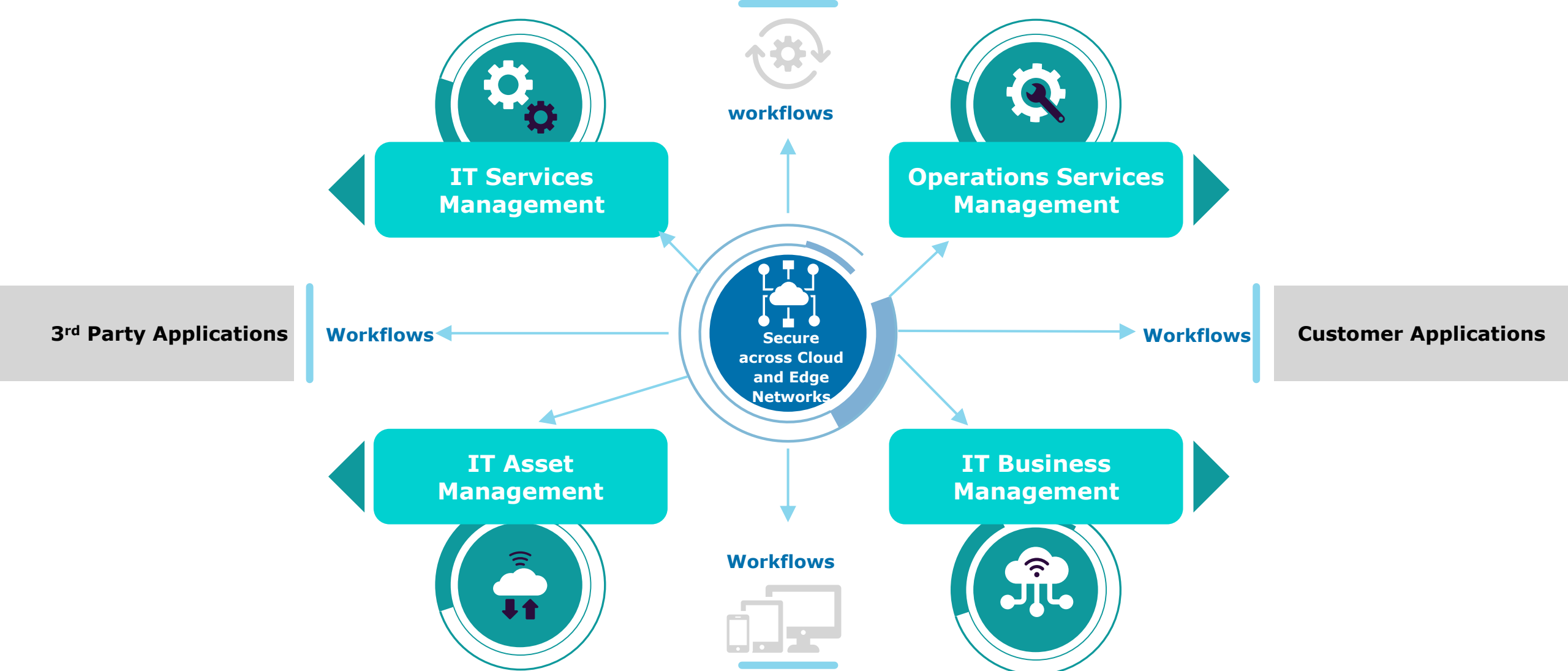
**Bringing together everything needed to see, understand, and mitigate risks in your converged OT/IT environment:**

**Visibility** into your IIoT/IoT security posture, with graphical displays and deep drill-down and analysis capabilities.

**Secure management** of your OT, IT, and IIoT systems, devices, and physical processes and assets.

**Enterprise-scale security** covering industrial, consumer, and employee-centric use cases, anywhere in the world.

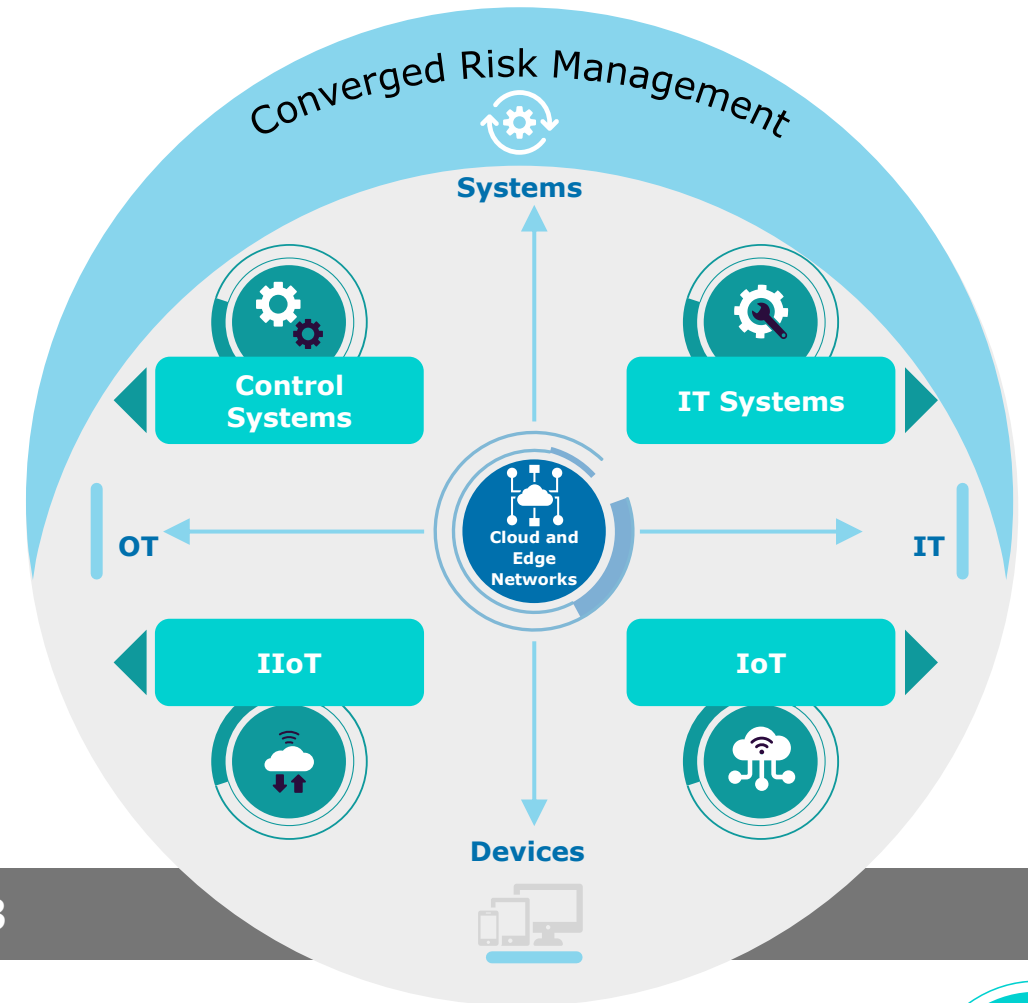
It's time to bring security to the source-every asset ServiceNow speaks to is automatically secured without disrupting customer's underlying network, infrastructure, Ipaas, or PaaS.



# Secure IoT/OT Services converges risk management across the enterprise



ISA/IEC 62443





# Secure IoT/OT Services: three categories of services



## Define

We assess your current OT/IIoT/IoT security and compliance status so you can clearly understand your risks and prioritize remedial actions.



## Protect

Our experts assist you with security solutions that will address your highest-priority security questions and issues and protect your critical infrastructure.



## Defend

Capgemini monitors your OT/IIoT/IoT environment so you can continuously identify and respond to threats, addressing your key issues.



# Secure IoT/OT Services: **Define**



## What are the risks if I do not have visibility into my OT/IoT network?

- **OT/IoT Risk & Maturity Assessment service and Industrial Asset Visibility, Classification & Management service** provide a comprehensive inventory of your OT/IT assets, identify security risks, and benchmark your risks compared with peers in your industry.

## How do I prevent unauthorized access to my production environment?

- **OT/IoT Cybersecurity Training & Awareness** service enables your teams to understand access-related vulnerabilities and deploy more effective authorization policies and practices specific to your IoT use cases.

## Are we compliant with our global data privacy and OT/IoT regulations?

- **Data Privacy and OT/ICS Compliance** service evaluates your current compliance status and makes recommendations for streamlining compliance-related activities.

# Secure IoT/OT Services: **Protect**



## How do I protect critical industrial assets?

- **Endpoint Protection for OT, ICS, and EOL** Systems provides recommendations for securing industrial assets according to the severity of your identified risks and vulnerabilities.

## What are the threats to my production line?

- **Zero Trust & Zero Touch Network Segmentation** delivers innovative, effective protections for production line vulnerabilities.

## How can I protect production from my supply chain?

- Capgemini offers a variety of sophisticated services such as **Industrial Policy Enforcement** and **OT/ICS Access Management** that help you extend security beyond your enterprise.

# Secure IoT/OT Services: **Defend**



## How do I monitor my global OT/IoT networks?

- **Global 24/7 OT/IoT SIEM/SOAR Operations Management** provides reliable, real-time analysis of security alerts generated by applications and network hardware.

## What do I secure my Global Industrial 4.0 Digital Transformation

- **Industrial & Operational Threat Management** combines a broad business perspective and detailed, expert technical analysis capabilities to secure your digital transformation and Industry 4.0 initiatives at all levels and security layers.

## How do I continuously Prevent, Respond, and Detect OT/IoT threats ?

- **OT Incident Prevention, Response & Detection** monitors your environment and provides the detailed, real-time information needed to move from “snapshot” threat prevention to continuous detection and response.

## The Capgemini difference: Key IoT partners

We work with the “Who’s Who” of IIoT/IoT related security partners, and their offerings complement and add value to our Secure IoT/OT Services. **This solution is scalable to any Partner in our partner ecosystem.**

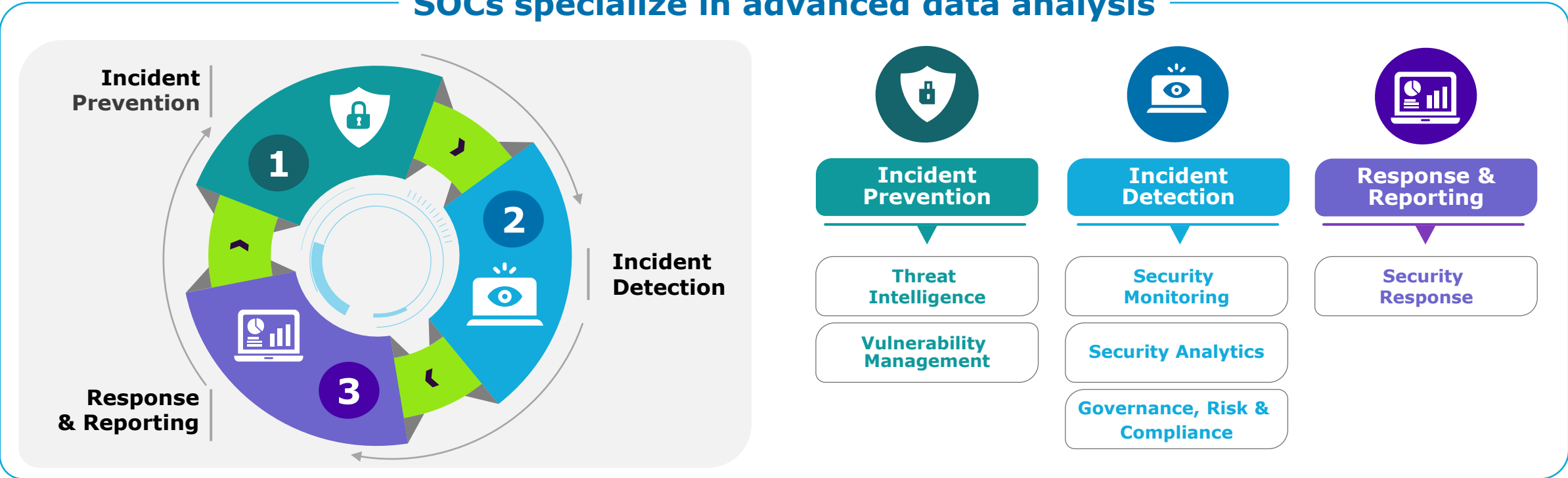


### Key Partners



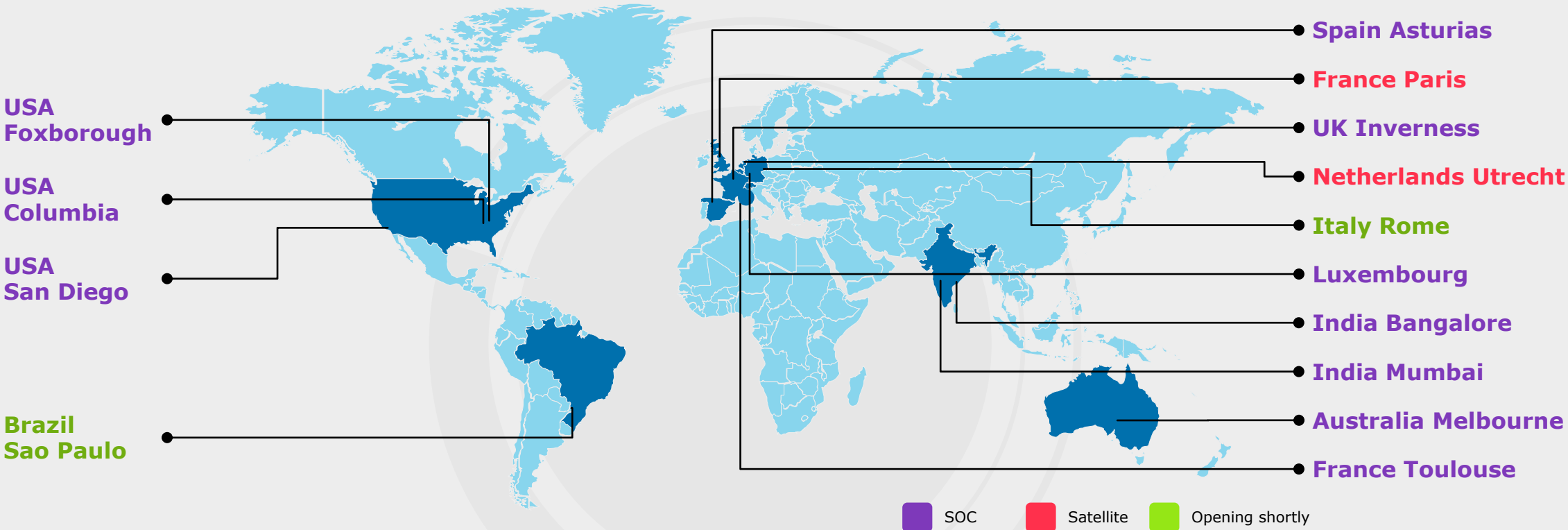
# Capgemini's Security Operations Centers (SOCs)

## SOCs specialize in advanced data analysis



SOCs bring together a set of processes, technologies and a team of cybersecurity specialists

# Capgemini's global network of SOCs



**Capgemini clients benefit from:**

- Expertise of 3000+ security professionals
- Proven processes and technologies
- Complete visibility into IT and security systems
- Advanced analysis of data and threat intelligence

**The results:**

- We find holes in your security you didn't see before
- Prevent incidents, detect threats, and respond to attacks like no one else



## About Capgemini and Sogeti

A global leader in consulting, technology services and digital transformation, Capgemini is at the forefront of innovation to address the entire breadth of clients' opportunities in the evolving world of cloud, digital and platforms. Building on its strong 50-year heritage and deep industry-specific expertise, Capgemini enables organizations to realize their business ambitions through an array of services from strategy to operations. Capgemini is driven by the conviction that the business value of technology comes from and through people. It is a multicultural company of over 200,000 team members in more than 40 countries. The Group reported 2018 global revenues of EUR 13.2 billion.

Visit us at [www.capgemini.com](http://www.capgemini.com). *People matter, results count.*

Sogeti is a leading provider of technology and engineering services. Sogeti delivers solutions that enable digital transformation and offers cutting-edge expertise in Cloud, Cybersecurity, Digital Manufacturing, Digital Assurance & Testing, and emerging technologies. Sogeti combines agility and speed of implementation with strong technology supplier partnerships, world class methodologies and its global delivery model, Rightshore®. Sogeti brings together more than 25,000 professionals in 15 countries, based in over 100 locations in Europe, USA and India. Sogeti is a wholly-owned subsidiary of Capgemini SE., listed on the Paris Stock Exchange.

For more information please visit [www.sogeti.com](http://www.sogeti.com)

This presentation contains information that may be privileged or confidential and is the property of the Capgemini Group.

Copyright © 2020 Capgemini. All rights reserved.





## The Capgemini difference: **OT experience and expertise**

---

- Decades of experience securing enterprises with critical OT processes and infrastructure in every industry
- Recent acquisition of Leidos Cyber
  - Proven critical OT infrastructure capabilities
  - Expands our global staff by 500 elite cybersecurity professionals
  - Holistic platform that services the entire security architecture
    - Integrated offerings for security
    - Managed security services

## The Capgemini difference: IIoT/IoT and industrial expertise

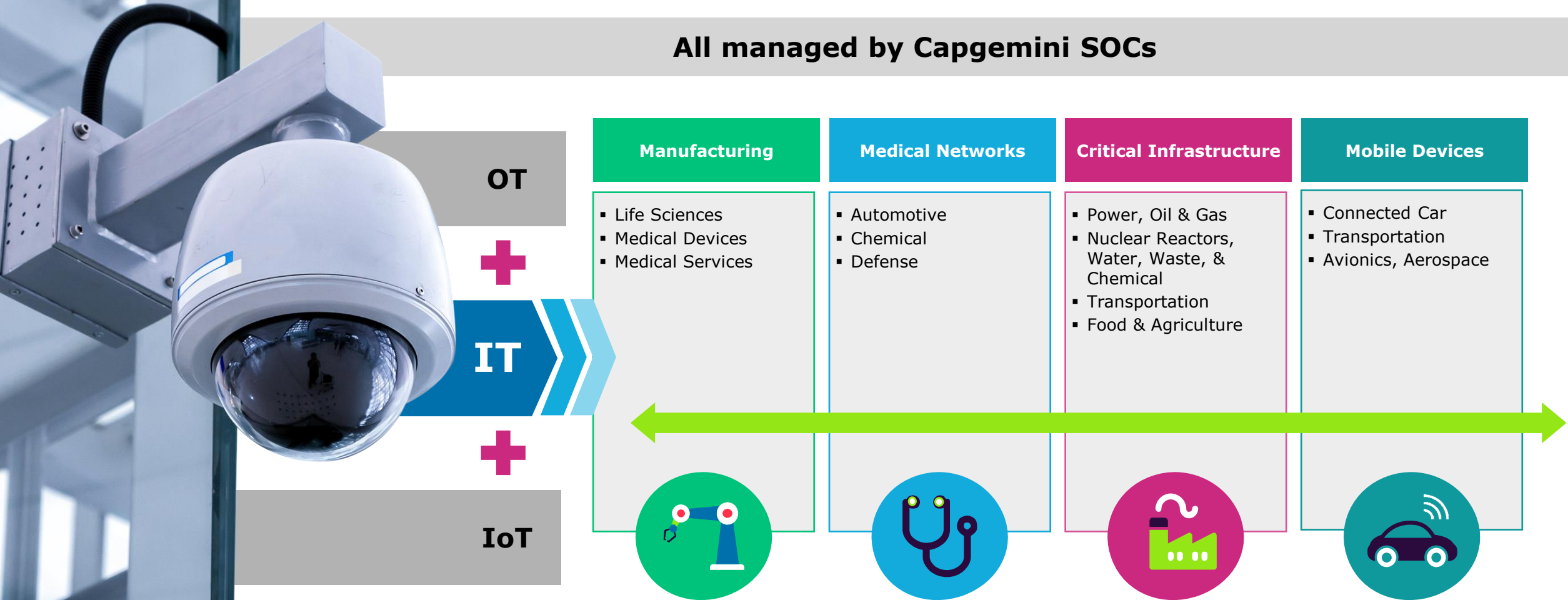
### **We can assess the security posture of your industrial systems and IoT devices, including:**

- Maturity analysis of industrial information systems
- Risk analysis of critical systems
- Security posture analysis of individual or systems of IoT devices
- Creation of a roadmap to solid defenses that includes quick wins in reducing risk



# The Capgemini difference: Broad and deep expertise in protecting critical assets

All managed by Capgemini SOC's



## The Capgemini difference: Top talent in OT/IT/IoT/IIoT security

**Our 3000+ skilled cybersecurity experts have proven expertise in all sectors and have earned industry-standard certifications including:**

- CISSP
- CISM
- CISA
- CCSP4
- ITIL
- CEH
- CCIE
- Others



## The Capgemini difference: **Business-focused, collaborative approach**

### **Your business priorities are paramount.**

- We listen, understand, and collaborate with all key stakeholders
- We tailor a strategy that aligns with your business objectives

### **Our collaborative approach allows you to:**

- Apply new innovations to protect your IoT deployments
- Address the skills shortage by leveraging our 3000+ cybersecurity experts
- Modernize and converge IoT security and manage known/unknown threats
- Transform compliance by automating and bringing consistency to meeting regulatory requirements such as GDPR
- Reduce costs by striking the right balance between in-sourcing and outsourcing
- Secure IoT and OT environments at scale



## The Capgemini difference: **Global scale**

**We deliver the advice and managed services you need, your way, anywhere in the world.**

- Global web of SOCs and research labs
- Thousands of security specialists
- Hundreds of local offices
- Vast experience with businesses of all types and sizes in every industry



## The Capgemini difference: Flexible service levels

**We provide anything from the basics across monitoring, detection, prevention & response and reporting, to enriched service levels that include customized services, analytics-based threat intelligence and advanced SOC automation.**

### **Bronze Services**

- Includes STANDARD, yet critical elements of the SOC: Monitor, Detect, Prevent, Respond & Report
- REDUCES overall operational overhead & infrastructure costs to maintain and sustain SOC services

### **Silver Services**

- Services providing MODERATE customization and extended SOC solutions
- INTRODUCES Threat Intelligence backed by ANALYTICS

### **Gold Services**

- COMPREHENSIVE services that extend advanced SOC services to automate SOC activities
- Counter advanced threats with THREAT INTELLIGENCE





## Case Studies

Capgemini has extensive experience and success with Secure IoT/OT Services customers in all industry sectors and across all business functions. Here are just a few examples.





# Global Oil & Gas Enterprise

## Higher operational level, improved security across the enterprise

Capgemini performed an exhaustive assessment of security controls at approximately 50 operational facilities worldwide, followed by strategic guidance and advice for improving both cybersecurity awareness and effective defenses. Capgemini also tested and validated OT and IT-based activities, executing penetration testing against the company's entire global I network.



### Business Challenges

- Complex global business
- Critical Health, Safety and Environment control



### Customer Objectives

- Assess security posture across IT & OT
- Build internal capabilities while operating in co-staffed model
- Develop long-term strategic security partnership



### Results

**The company raised its operational level and developed more mature and effective cybersecurity delivery across the enterprise.**



## Large Electric Utility

### Cybersecurity Transformation

Capgemini assessed the company’s current operational maturity and provided a roadmap to more robust and effective intelligence operations. Capgemini also assisted with knowledge transfer in the form of workshops and training on threat monitoring and metrics/reporting.



#### Business Challenges

- Protecting the power grid, customers, and employees
- Ensuring operational uptime



#### Customer Objectives

- Raise cybersecurity awareness across the enterprise
- Become a leader in cyber security maturity among power utilities
- Develop a security intelligence center



#### Results

**The company developed a more mature and effective cybersecurity organization and brought together the people, processes, and technologies needed to run their own security intelligence center.**



## Global Manufacturer

### Cutting Risk through Operational Transformation

The company was facing increasing demand for its products, which required continuous plant and process availability. Capgemini helped establish network segmentation and baseline controls for 50+ global manufacturing plants. The company was able to execute live cut-over with zero impact, and Capgemini subsequently provided managed services to address specific security requirements.



#### Business Challenges

- Increasing demand required continuous plant/process availability
- Revenue and market share were at risk from plant or process shutdowns



#### Customer Objectives

- Establish network segmentation & baseline controls
- Extend to global manufacturing plants



#### Results

**The company met the increased demand without sacrificing security, and thereby reduced the risks of revenue and market share reductions.**

## Next steps

Let's talk about your business

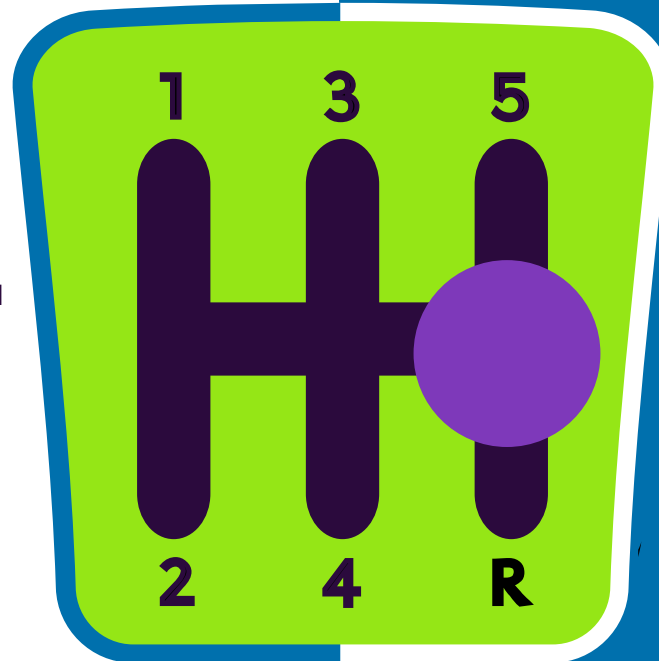


**Elijah Chapman**

Secure IoT/OT Services Offer Lead  
Capgemini



[elijah.chapman@capgemini.com](mailto:elijah.chapman@capgemini.com)



**Learn more**

Visit [www.capgemini.com](http://www.capgemini.com) for additional information about our Secure IoT/OT Services offer, and the full spectrum of Capgemini services.