

# Fabric & Power BI Monitor



**Monitor** your  
**Tenant** on your terms

## Store All The Data



Lakehouse



Databricks



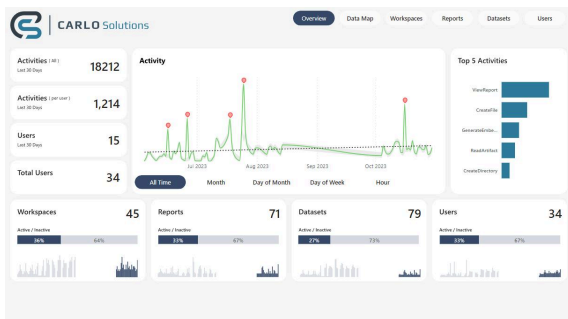
Power BI  
Reporting

Power BI Monitor provides a **comprehensive** look at all the **data** being generated from your Power BI tenant. From seeing **activity** logs to a full **catalog** of Power BI items.

Monitoring can be deployed by using Fabric or a Databricks built solution to enable low running costs.

Collect data as long as you need, no time period restrictions for data retention, it's your data keep it as long as you like.

## Includes Standard Reporting



Two prebuilt **reporting solutions** provided to identifying **usage** and **permissions** access across the whole tenant.

Solution extends to multiple tenants and provides a single centralized usage reporting solution.

Identify datasets failing refreshes, active user counts and more insights.

## Customizations Available

Offering includes

- Two full reports one for activity usage metrics and a second for item cataloging with user access traceability
- Full Databricks engineered solution to collect api data
- Lakehouse build to collect all data
- No limits on amount of data stored
- Professional installation and setup in days not weeks
- API data collected for Activities, Scanner, Capacities, Tenant settings, Data Refresh, Monitor Gateway Clusters

You would not **drive** your car with your **eyes shut**.

Then why would you run your **Power BI tenant** without **monitoring**!

Full Solution  
MSRP Price \$7,000