

AHEAD

2024

# Secure Data on Personally- Owned Devices

# Security Concerns with Employee Devices

Lost or stolen devices

Intentional/Unintentional  
Data Theft

Employee  
Attrition/Offboarding



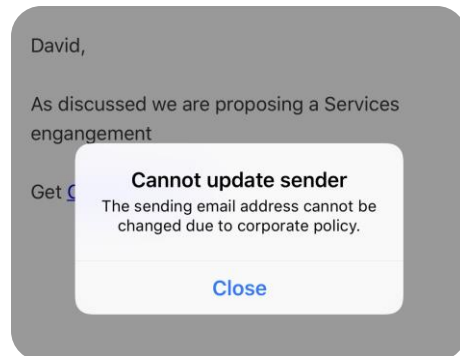
# What do app protection policies provide?



## Multi-identity awareness

Targets protection ONLY to corporate account

Personal and unmanaged accounts aren't affected



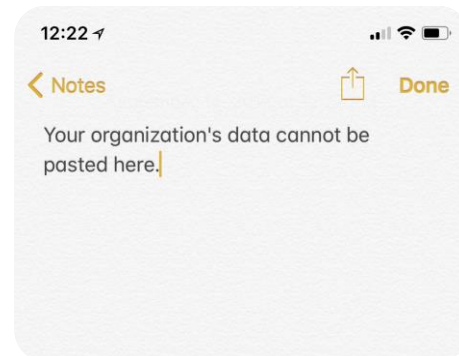
## Data protection

Encrypts corporate data

Controls data transfer mechanisms between managed and unmanaged apps

Controls transfer of web content

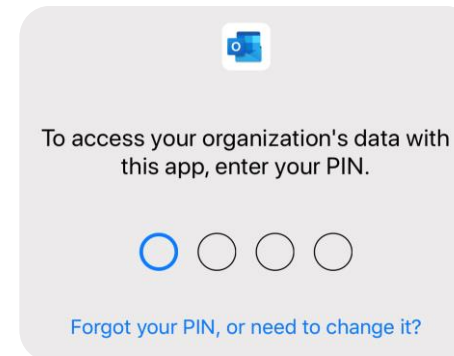
Selective wipe of corporate data – whether it be admin, user, or offline initiated



## Access requirements

Controls access to corporate data via PIN, biometrics, or credentials

Provides inactivity timers



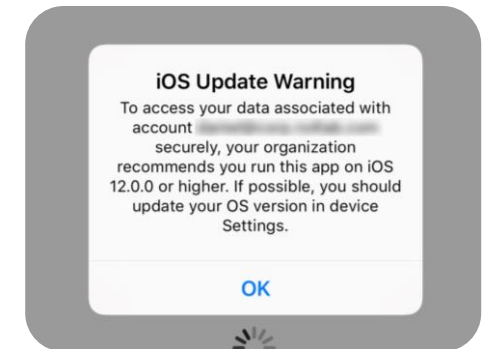
## Conditional launch

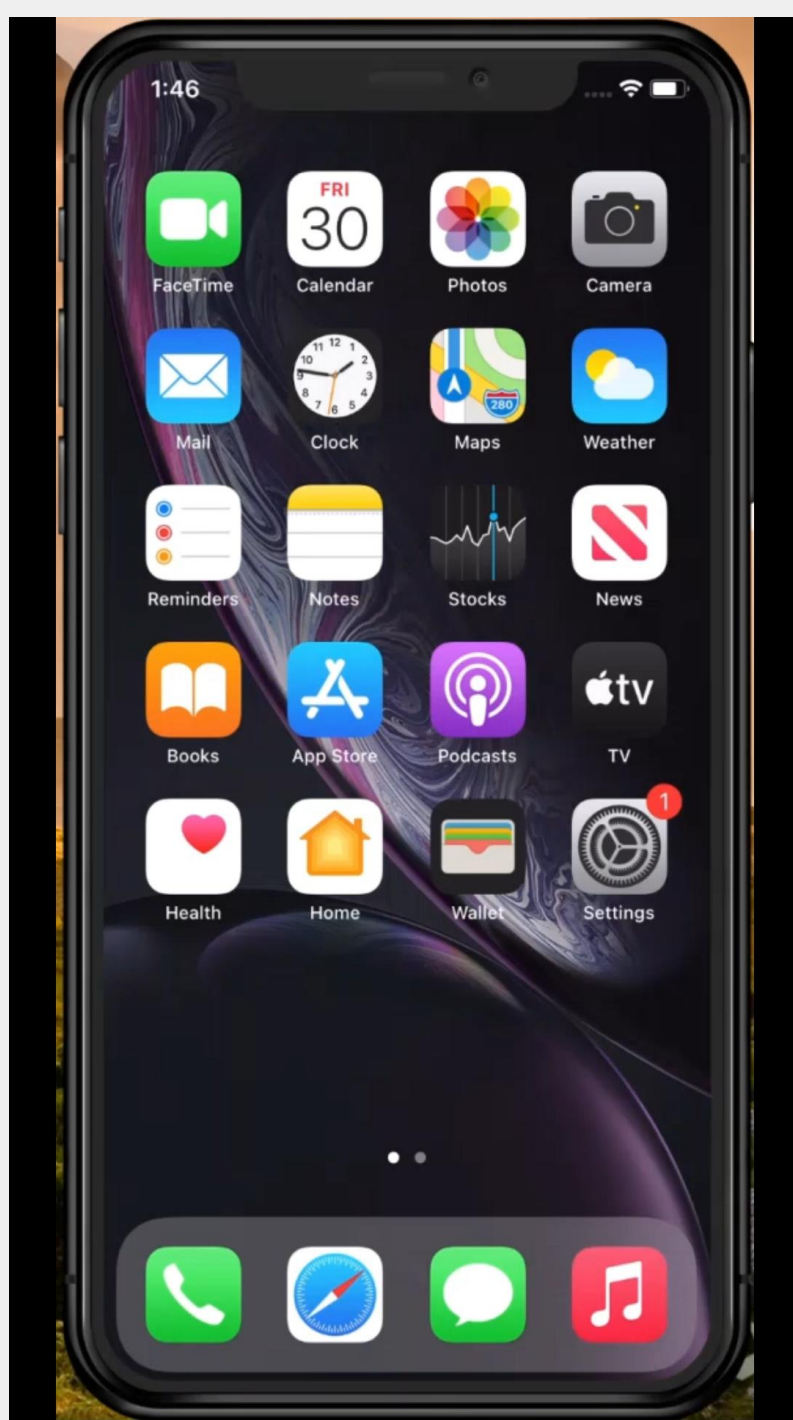
Validates device health: Jailbreak/Rootkit, mobile threat defense

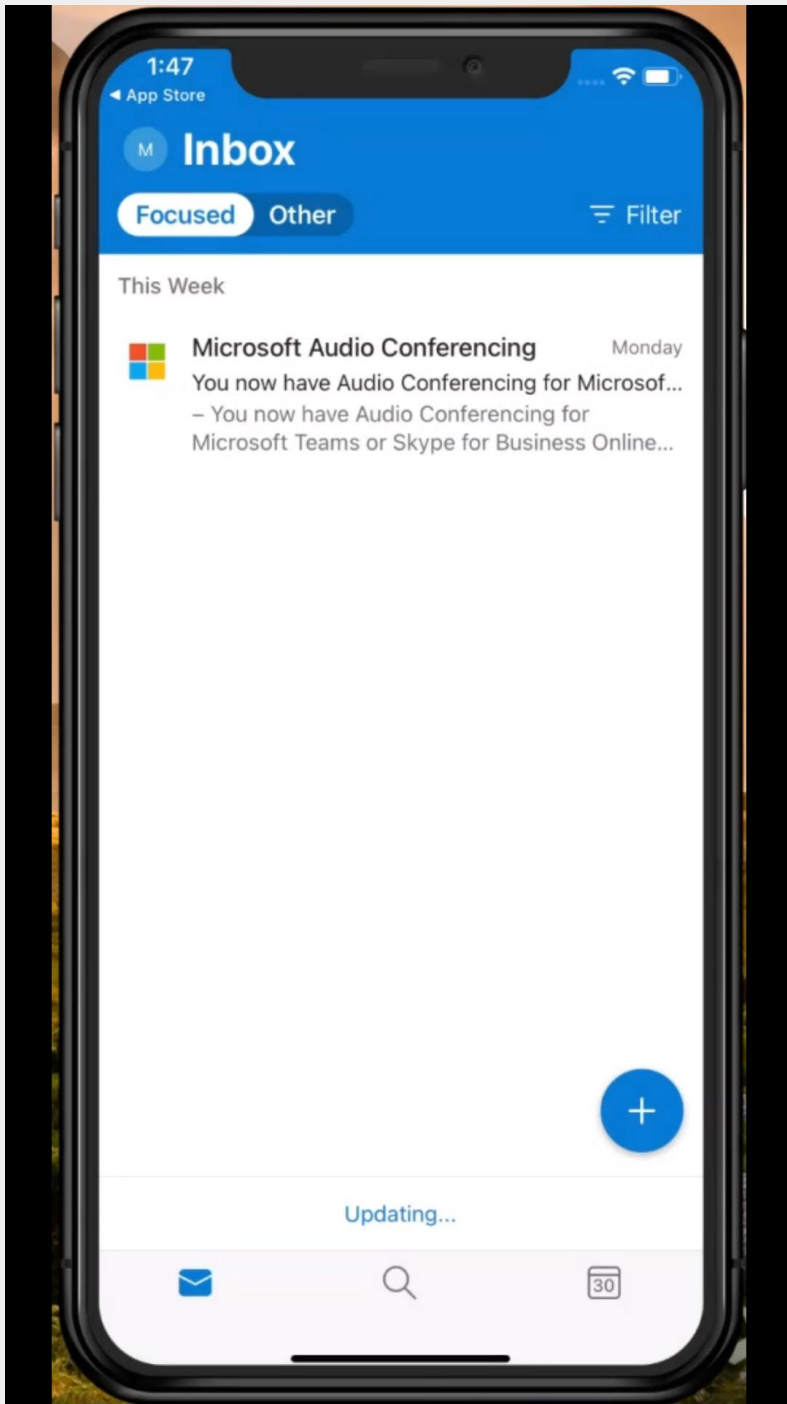
Validates OS variables like OS version, Android patch version

Validates app variables like app version or SDK version

Validates device model or manufacturer







# How do we get started?



Project-based professional services for deploying Microsoft Intune Mobile Application Management



Microsoft Intune Licensing

AHEAD

Thank You

Accelerate Your Impact  
[ahead.com](https://ahead.com)