



Cegeka - Windows 365 PoC Solution

—

- Short Description
- Long Description
- Slideck of the solution
- One Pager of the solution

Topics

Short Description (max 200 characters, **current 197 characters**)

This proof-of-concept is a 4-day engagement that demonstrates the capabilities of Windows 365 as well the usage scenarios and results in a roadmap for implementing Windows 365 in your own environment.

Description (max 2000 characters, **current 1060 characters**)

This proof-of-concept is a 4-day engagement (max duration 1 month) that demonstrates the capabilities of Windows 365 as well the usage scenarios and results in a roadmap for implementing Windows 365 in your own environment. Windows 365 combines the power and security of the cloud with the versatility and simplicity of the PC. From contractors and interns to software developers and industrial designers, Windows 365 enables a variety of new scenarios for the new world of work. This engagement will guide you through the usage scenarios of Windows and 365 and will conclude with a high-level roadmap for implementing Windows 365 in your own environment based on the results of the Proof-of-concept. The planning of this engagement is:

Day 1:

- Windows 365 Overview
- Review Proof-of-concept requirements
- Review Proof-of-concept goals and planning

Day 2:

- Baseline configuration of Windows 365
- Deployment of 5 proof-of-concept users;

Day 3:

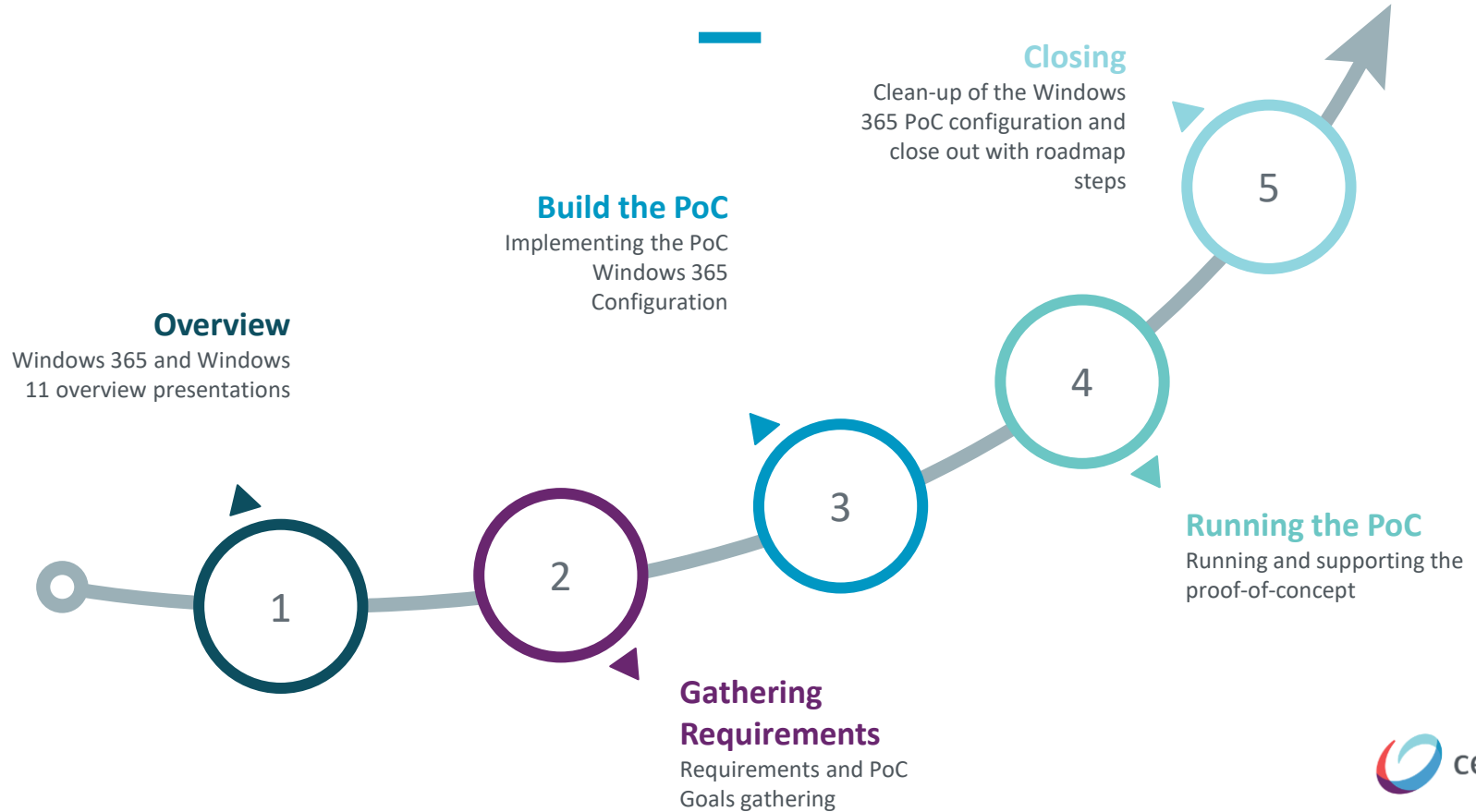
- Supporting and running Proof of Concept Windows 365

Day 4:

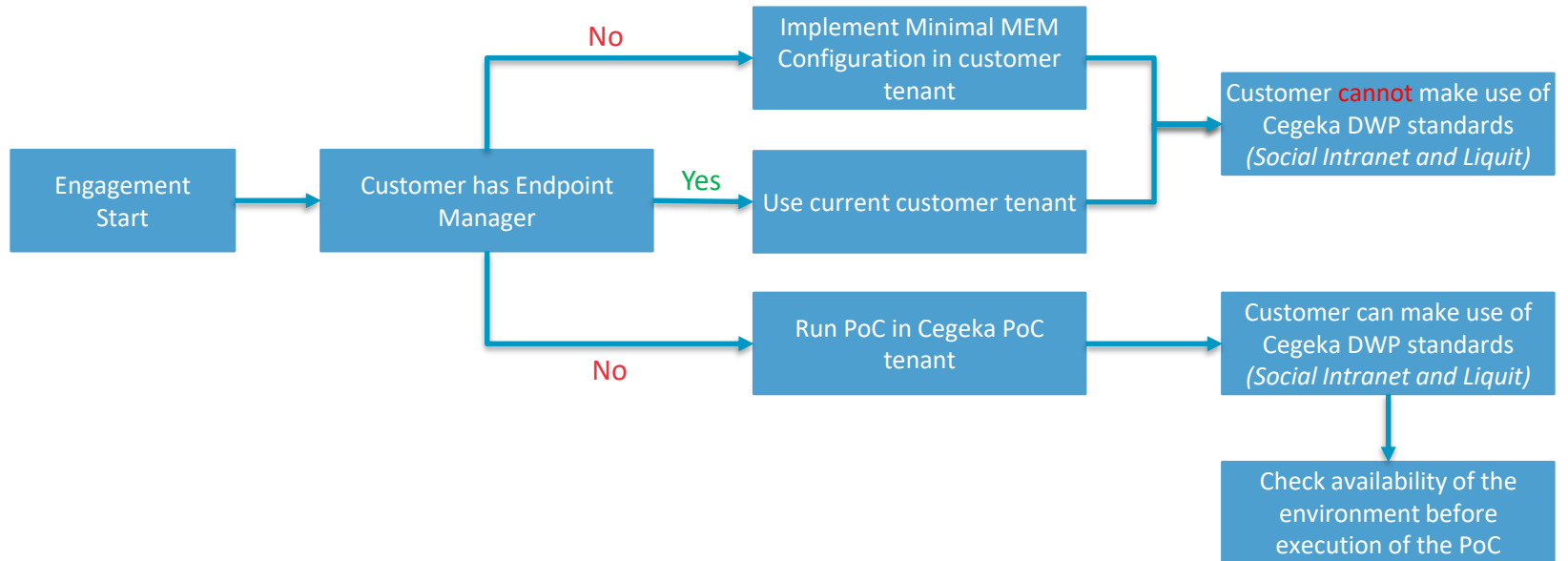
- Removing the Proof-of-Concept configuration
- Closing with evaluation and roadmap report;

— Slidedeck —

Windows 365 Proof-of-Concept



Choice of PoC Environment



My Security

Business



Technology



Ability



My Experience



My Equipment



My Platform



My Teamwork



My Support

My Digital Workplace

My Advanced Security



My Productivity



My Onboarding & Learning



My Experience



My Change Process



My Assistant

My Equipment



My Device



My Prints



My Platform



Physical



Virtual



My OS



My Applications



My Connectivity



My Identity



My Teamwork



My Communication



My Information



My Collaboration



My Support



Technical



Functional



Remote

Local
Nearshore

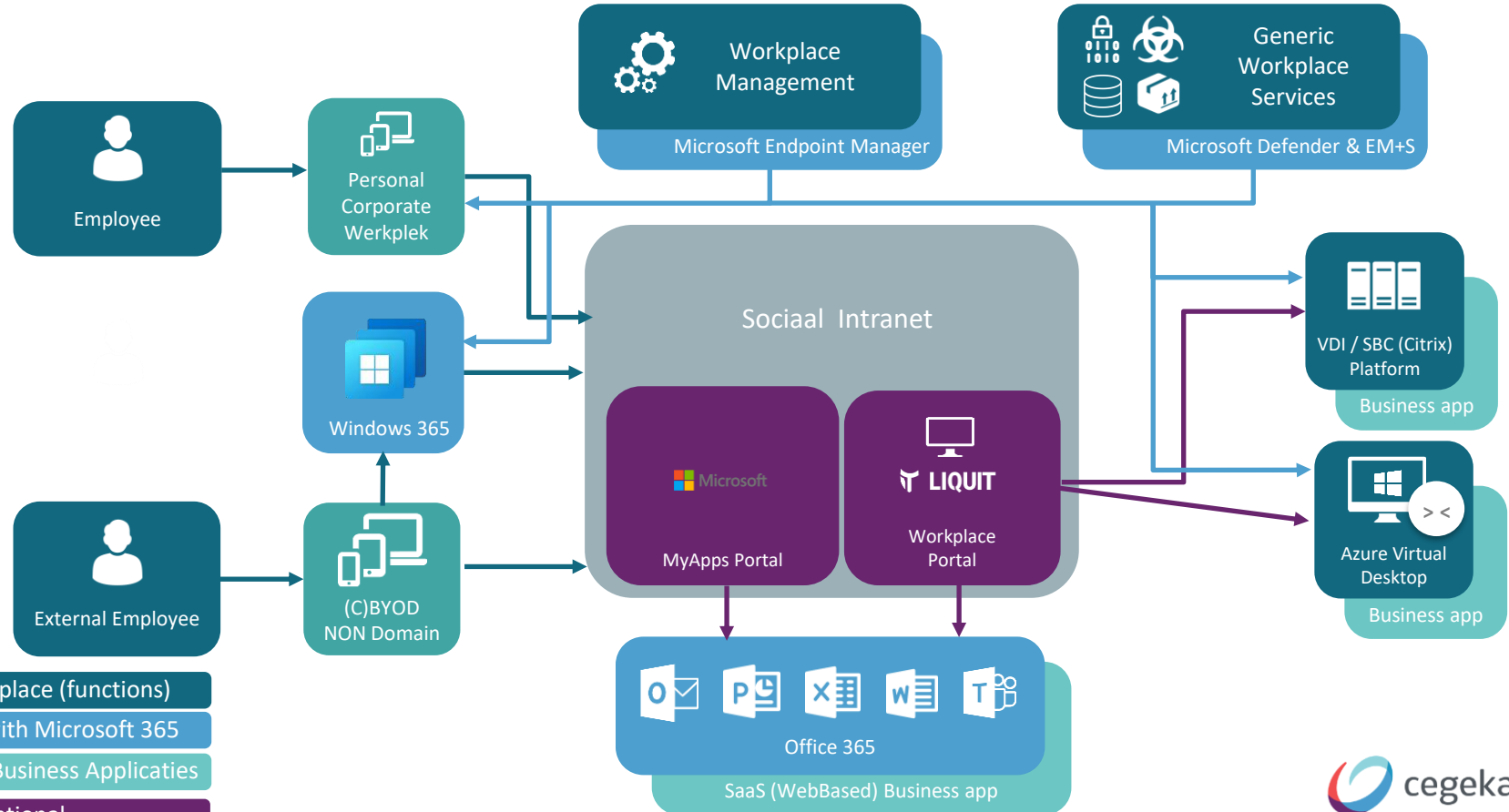


Onsite

1st line
2nd line
3rd line



Digital Workplace Components



Deployment process



Azure
subscription



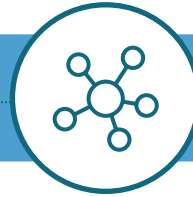
Configure Azure
Active Directory

Connection and
Group Memberships



Windows 365 licenses
in Microsoft Endpoint
Manager Admin
Portal

Configure Microsoft
Endpoint Manager



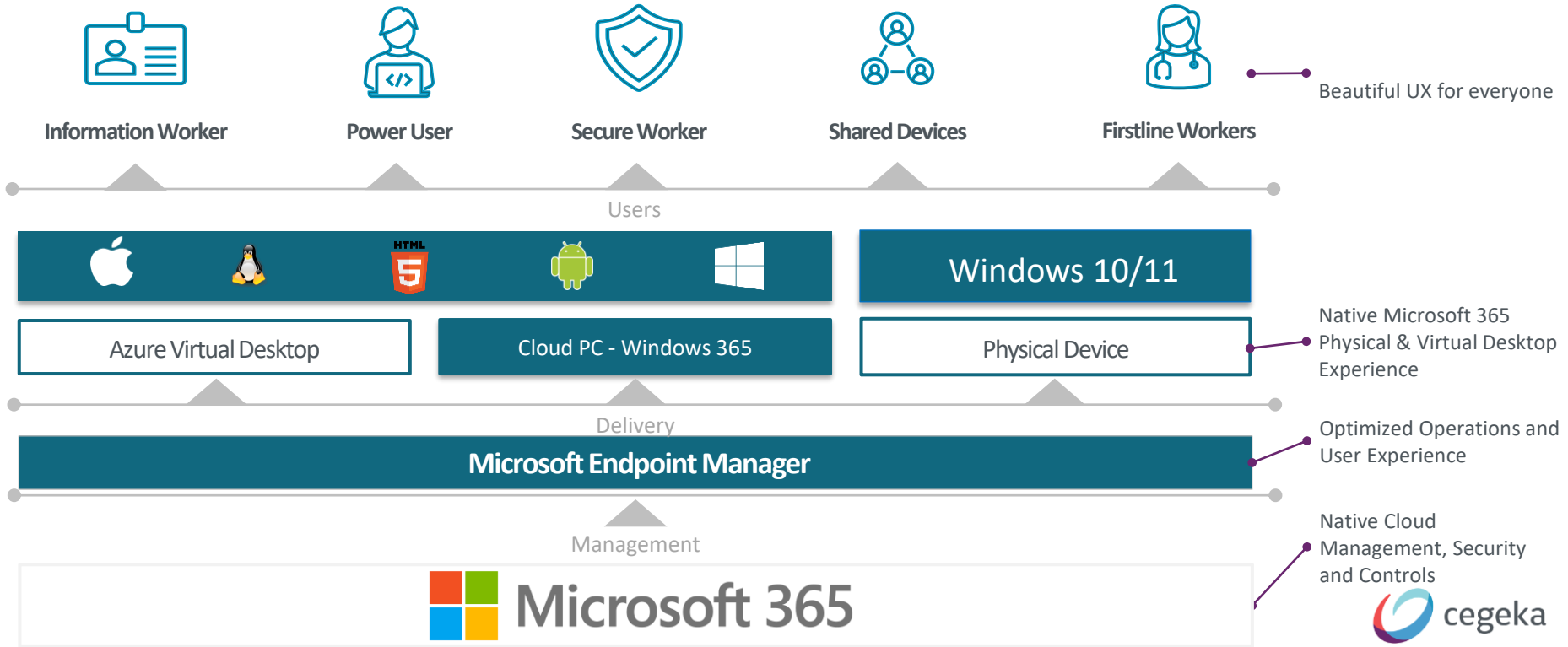
Configure all required
Azure resources



Configure Identity
required measures
like Conditional
Access

Windows 365

Microsoft Modern Desktop Strategy



Microsoft cloud solutions



Windows 365

A complete SaaS service that securely streams your personalized Windows desktop, apps, settings, and content from the Microsoft cloud, to any device

Optimized for simplicity:

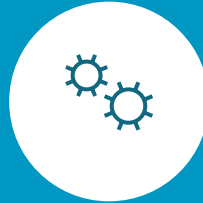
- Windows 10 or Windows 11 personalized desktop
- Complete end-to-end Microsoft service
- One-stop administration in Microsoft Endpoint Manager (Enterprise edition)
- Direct self-service model (Business edition)
- Predictable per user pricing



Windows 365 Cloud PC - Built on Zero Trust principles



Azure AD (AADJ) use increases security



Reliable patching Always online means timely & consistent updates applied across all your PCs



Consistent settings across devices for different users irrespective of location



Prevent Data Leakage Clean isolation of sensitive data prevents employee mistakes



Reduced threat exposure Intelligent access control and real-time monitoring/mitigations



Integrated into existing **unified security** and **identity management** capabilities

Why do customers care about Windows 365?



Simple to buy,
deploy, and manage



Always ready
and updated



Predictable
costs



Streamed to any
devices

Customers like VDI, but it's complex, hard to scale across geographies and takes lots of IT resource
Windows 365 is SaaS for VDI – it's simple, scalable and requires no IT admin overhead

Provisioning a Windows 365 Cloud PC is simple as assigning a license in the Microsoft 365 admin portal. An IT admin can give an up-to-date Cloud PC to 1,000's of users in under 1 hour

Traditional VDI costs are variable, and use consumption-based compute (Azure)
Windows 365 is a fixed per user per month cost, with Disaster Recovery built-in by design

A Cloud PC will bring old hardware to life - think of Windows 365 as an OEM alternative
We continually performance tune and optimize the end user experience to feel like a modern physical PC

Windows 365 for Enterprise:

Versatile options to meet your needs

Access from a variety of devices and operating systems

Form factor

Desktop / Laptop / Tablet / Phone

Platform

Windows / Mac, iOS / Android

Provision with your choice of Windows

Windows 10

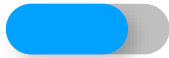
Windows 11

Choose from a range of compute and storage configurations—each offered at a predictable monthly per-user price



8vCPU

32GB / 128GB
32GB / 256GB
32GB / 512GB



4vCPU

16GB / 128GB
16GB / 256GB
16GB / 512GB



2vCPU

4GB / 64GB
4GB / 128GB
4GB / 256GB
8GB / 128GB
8GB / 256GB



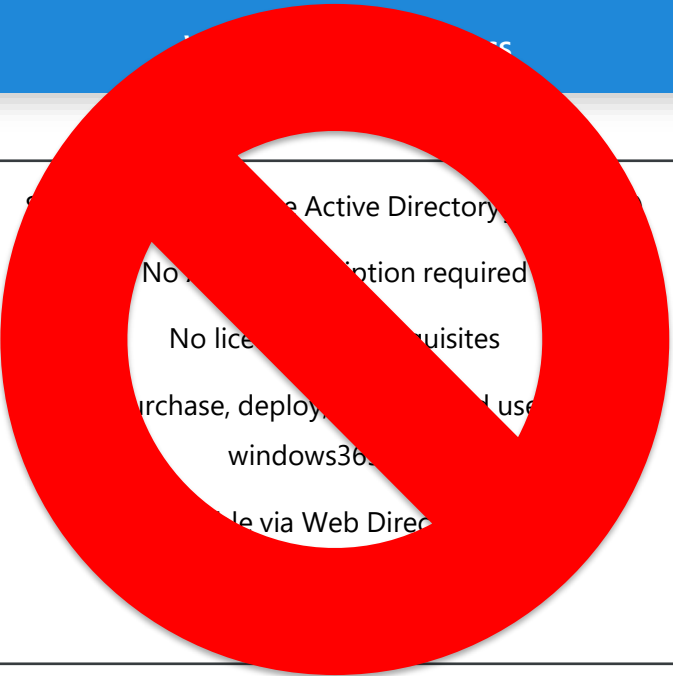
1vCPU

2GB / 64GB



The right Windows 365 edition for the proof-of-concept

Windows 365 Enterprise



...e Active Directory
No ...tion required
No license prerequisites
Purchase, deploy, and use
windows365
le via Web Direc

Azure subscription required

Must be licensed for Windows 10 or 11 Enterprise,
Microsoft Endpoint Manager, and Azure Active
Directory P1

Deploy and manage through Microsoft Endpoint
Manager

Available via Web Direct, Field, or CSP

Unlimited number of users

What are the Windows 365 use cases?



Data security

Improve regulatory compliance and IP protection via data centralization and a reduced threat surface.



High-capacity computing

Cloud-scale compute and storage to support specialized workloads like design and development.



BYOPC programs

Enable secure Cloud PCs, even on personal devices.



Business Continuity & DR

Help ensure continuity and access for your workforce and company data even in the most challenging circumstances.



Temporary workforces

Simplify and accelerate the onboarding and offboarding process for elastic workforces.











Mergers & Acquisitions

Provide seamless transitions and access for growing businesses.

Key target customers for Windows 365?

- Customers with an older on premise Citrix environment for which the contract is ending or they need to renew the hardware (too costly so looking for alternative solutions)
- Customers with external staff:
 - Trainees/students
 - External contractors
- Customers with users in different regions and challenges with device shipments and shortages
- Customers already using Intune & Endpoint Manager

Technical and license requirements

License		Users w/ Windows Pro endpoints: W10 E3 + EMS ¹ E3 or M365 F3/E3/E5/BP Users w/ Non-Windows Pro endpoints: Win VDA E3 + EMS ¹ E3 or M365 F3/E3/F5/BP
Azure Subscription		At least 1 needed for an Azure Virtual Network
Network		Azure Virtual Network with line of sight to Domain Controller
Machine Identity		Hybrid Azure AD Join (HAADJ)
User Identity		Hybrid users (AD + AAD)
Image		Gallery or BYO in Azure (Win10 Ent 19H1+)
Management		Microsoft Endpoint Manager (supports SCCM co-management)
Admin Permissions		M365: Intune Service Admin (standard MEM RBAC after provisioning) Azure: Subscription Owner (setup network connection)

1. Intune + AADP1 can be used as substitute for EMS E3

— One Pager —

Thank you