

Data Center Migration Workshop

With an aim like Data Center Migration, experience is the key ingredient for success. As a trusted authority on Data Center Migration, Celebal has provided a varied group of clients across a wide variety of fields. Our Cloud-based services help the businesses to access Cloud-based Infrastructure that is assured with improved Availability, Reliability, Resiliency, Scalability, and Security.

Data is the most crucial asset in transforming businesses. A well-planned and executed Data Center Migration has the potential to change an organization's overall operational habitat. These changes can have long-lasting effects on day-to-day productivity and overall business processes and methods. Our migration team help clients to migrate their On-premise legacy systems and servers to cloud.

Benefits of Data Center Migration

Increased Efficiency

When migrating cloud-ready belongings from your existing footprints into Azure, we check out your existing Infrastructure Blueprint and assist you in creating a Modern Cloud Landscape. Our Migration team improves your data center's efficiency by helping you in designing Highly Available, Resilient, and Fault Tolerance systems leveraging Cloud-Native capabilities like Virtual Machines, Managed Disks, Availability Sets, Availability Zones, Load Balancer and Network Security Groups.

Total Cost of Ownership

Moving to the cloud would provide increased up-time of your business-critical applications and better value on your spending because reducing servers on-site by half would reduce running costs and save physical space in your data center.

Our organization help clients to optimize costs for both variable and stable workloads by taking advantage of multiple pricing models, including hourly pricing, Azure Reserved Pricing, and Azure Hybrid Benefits. Right-sizing of resources during the Assessment phase in the migration journey also helps in saving costs.

Improved Security

Celebal Technologies helps you in designing and implementing a layered, defense in-depth strategy across identity, data, hosts and networks. Our team ensures an end to end security of your Data Layers by using Encryption at-rest and in-transit, Data Discovery and Classification, Auditing on SQL Databases. Our Team helps in designing a Zero Trust Model for your Network and hosts by implementing defence in depth using NSG's, Traffic Filtering using Firewalls, DDoS Protection, Vulnerability Assessment and Advanced Threat Protection.

Implementation strategy

Planning and Discovery

Celebal Technologies technical consulting team starts with the planning process by understanding the design requirements of onsite server's data, including migration schedules and priorities, backup and replication settings, capacity planning, and prioritizing data value. We also take care of Hybrid Identity and Hybrid Networking using Azure services. Once the planning is done, discovery starts, which involves identifying existing workloads and applications in your infrastructure to be prepared for migration.

Analyze Application Dependencies

Post planning and discovery, our team categorize analyzing dependencies based on two categories:

- Agentless - No need to install agents on machines you want to cross-check.
- Agent-Based - Agents to be installed on each on-premises machine that you want to analyze.

According to the application dependencies, we group servers, and start the Assessment Phase.

Assess and Evaluate

Our migration team conducts a data center Assessment to help the customer better understand its server infrastructure landscape. Based on the Infrastructure Assessment, we recommend re-architecting/re-designing the server infrastructure and modernizing the servers using Microsoft Azure Services.

We categorize Assessment into two-part.

- Performance-based - Assessments based on collected performance data
- As on-premises - Assessments based on on-premises sizing

The evaluation provides detailed cost estimates. Our team conducts a TCO analysis to show each cost area with an estimate of your on-premises spends versus your spending in Azure.

Migration

Once the Assessment phase is over, migration kicks off as per the strategy.

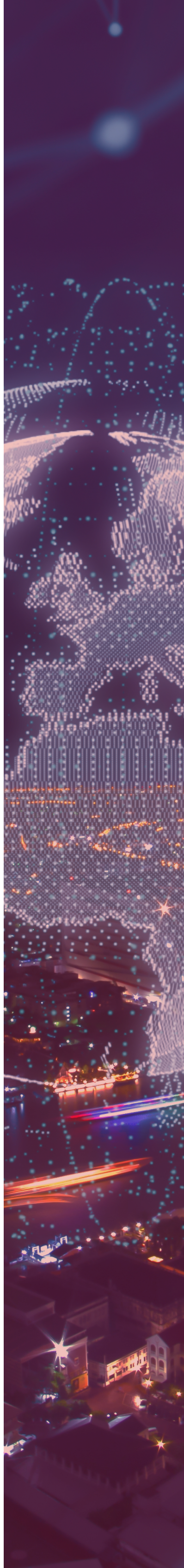
Based on the Assessment and right-sizing of the servers. We categorize your servers into 3 Categories:-

- Readily available for migration.
- Need to undergo some modification – Includes software and application version upgrades.
- Cannot be migrated – Operating system not supported in Azure.

Our team migrates the critical applications and components according to their dependencies. Post migrating the servers to Azure. We engage some application stakeholders to run performance benchmarks, data consistency tests to determine the successful migration.

Secure and Optimize

Post-migration, the most critical task is to secure migrated workloads from internal and external threats. Our security team enables security features that protect workloads from attacks to provide unified security management. We also analyse resources and configurations across Azure and make security recommendations, including centralized Policy Management, Continuous Security Assessment, Actionable Recommendations, and Prioritized Alerts and Incidents. Servers can be optimized based on the recommendations using Azure Advisor.



Assumptions

- Discovery of servers can be done either on public Assessment server, or a proxy enabled server.
- To ensure proper Assessment, at least seven days telemetry data is required for right sizing of resources.
- Depending on the number of servers, Assessment can take at least a month for correct dependency visualization of complex architectures.
- Grouping of servers may change as per the interconnections of servers.
- Test migration and migration of servers are dependent on bandwidth.
- For the discovery of servers, there is a need to install discovery agents on On-Premise servers.

