



**CELEBAL**  
TECHNOLOGIES

# Discrete Agentic AI

---



# Celebal Tech - Our Specializations and Strengths



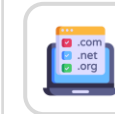
## Key Strategic Partnerships



## Advanced Specialization



- AI & Machine Learning
- Analytics
- Infra and Database Migration to Microsoft Azure
- Kubernetes
- Cloud Security



Deep Domain Expertise



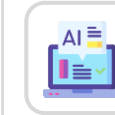
ISD Approved Partner



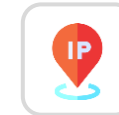
Azure Open AI industry driven Co-pilots.



ECIF Green+ AMM + Azure Innovate



AI Solutions To Help Retire AI Design Wins



IP Co-sell Partner with Marketplace Transaction and MACC enabled Solutions

**3000+**  
Employees

**1500+**  
Azure Certification

**800+**  
AI Experience Professionals

**250+**  
SAP Experts

## Industries We Serve Globally



Manufacturing



Retail & CPG



Financial Services



Energy & Sustainability



Healthcare & Life Sciences



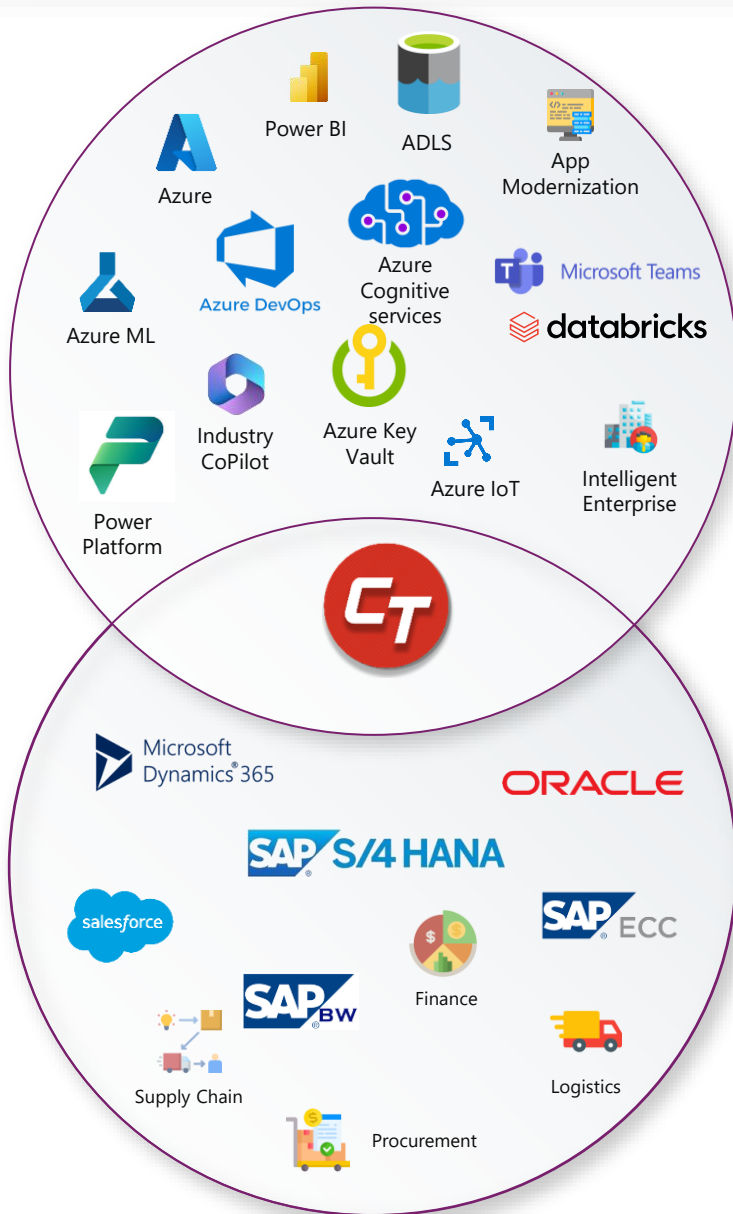
Media & Entertainment

US | INDIA | EUROPE | CANADA | APJ | MIDDLE EAST | AUS





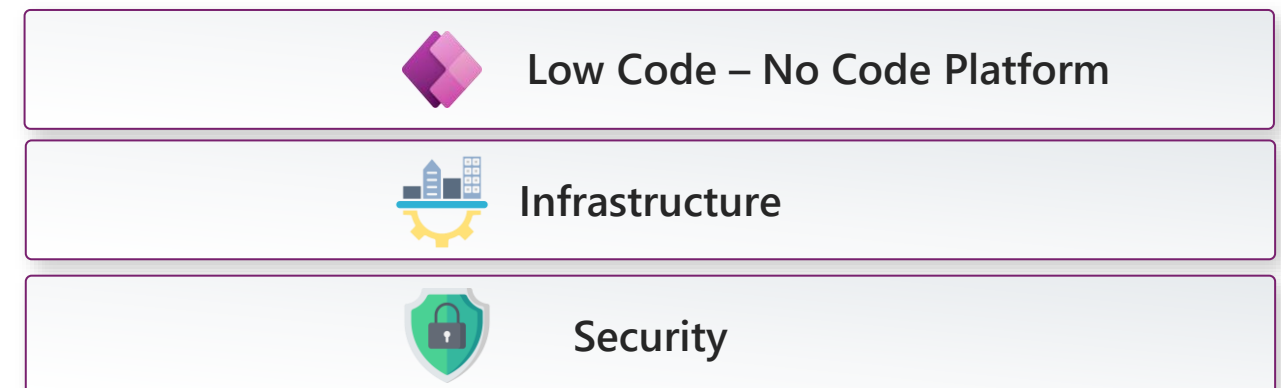
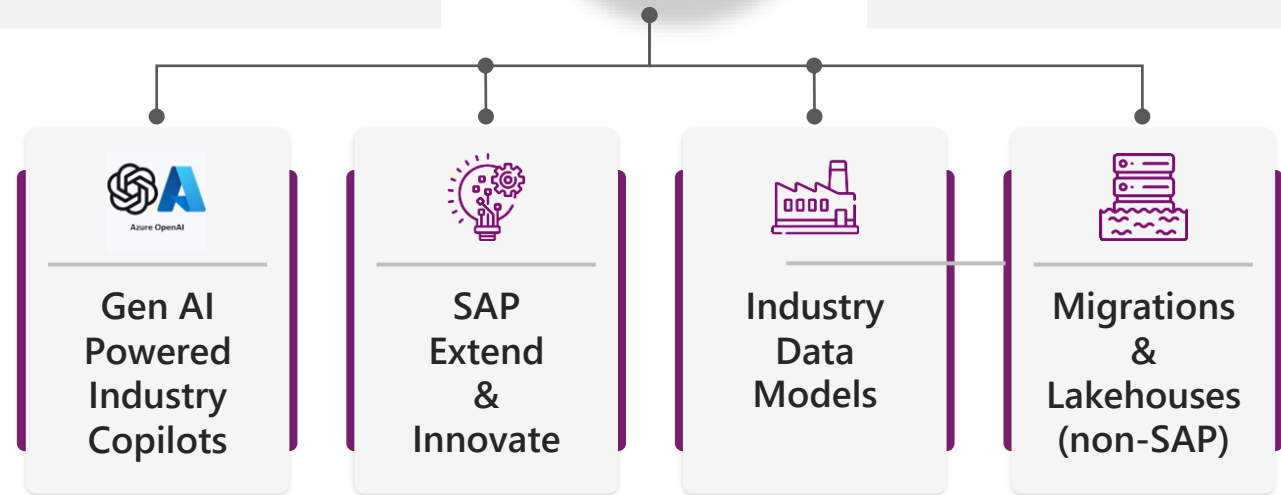
# Traditional Enterprise meets Modern Cloud Innovation



- Deep Domain Expertise
- Open AI industry driven Copilots
- Premium Partner for SAP Extend and Innovate
- ECIF Green & Azure Innovate and AMM Cert.



- Partners with Microsoft Research
- IP Cosell Partner with Marketplace Transaction
- MACC enabled Solutions
- ISD Approved Partner





## Business Challenge

- Delayed detection of supply chain disruptions
- Lack of real-time alerts for KPI deviations
- Delayed query responses lead to missed opportunities.
- Missing recommendations based on live performance data



## Solution

Transform your supply chain with autonomous, persona-driven agents that deliver 360° real-time KPI visibility, natural language insights, and proactive alerts, powered by intelligent analytics to accelerate decision-making, reduce disruptions, boost productivity and operational precision across Organization

## Persona Benefits



### Demand Planner

- Enhanced Demand Forecasting
- Order Fill Rate Optimization



### Supply Planner

- Supplier Collaboration and Order Management
- Production Planning and Scheduling



### Purchase Engineer

- Supplier Evaluation
- Contract Information



### Quality Engineer

- Incoming Material Quality Inspections
- Quality Management Document Insights



### Warehouse Manager

- Inventory Accuracy Enhancement
- Enhanced Stock Visibility



### Logistic Manager

- Logistics Planning and Optimization
- Cost Reduction Analytics

## Solution Features

### Preconfigured Analytics

Empowers each persona with real-time, data-driven decision-making by providing deep visibility into critical KPIs

### Push Notifications & Alerts

Enables proactive issue resolution by automatically triggering persona-specific alerts and push notifications

### Natural Language Query Interface

Enables users to ask business questions in natural language and get contextual answers in text and visual formats

### Agentic Capabilities

Autonomous agents monitor metrics and deliver proactive recommendations to boost timely, informed decisions

## Customer Key Facts



**Implementation Window**  
~ 20 – 24 Weeks



**Implementation Cost**  
\$220k

### ROI



- ~20 to 35% Improvement in Decision-Making Speed
- ~20-40% Reduction in supply chain disruptions

## Dashboards (18) KPIs (52)



**Demand Overview**



**Sales Order Analysis**



**Finished Goods**



**Sales Order Analysis**



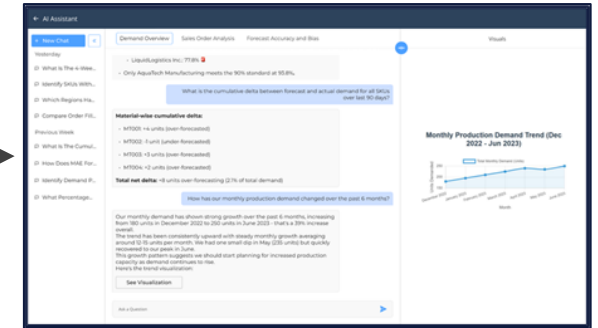
**Supplier Performance**



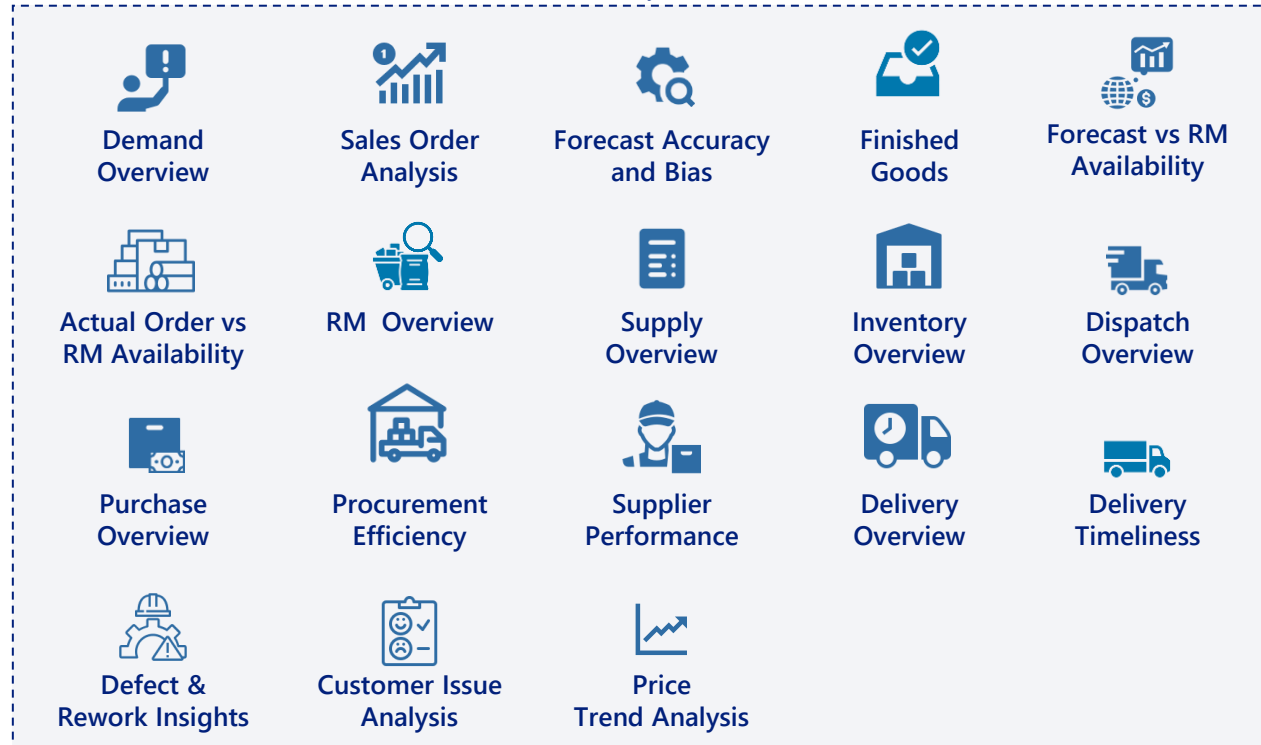
**Delivery Overview**



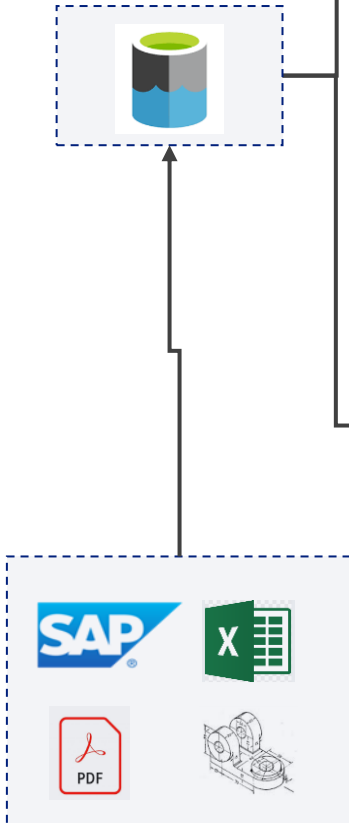
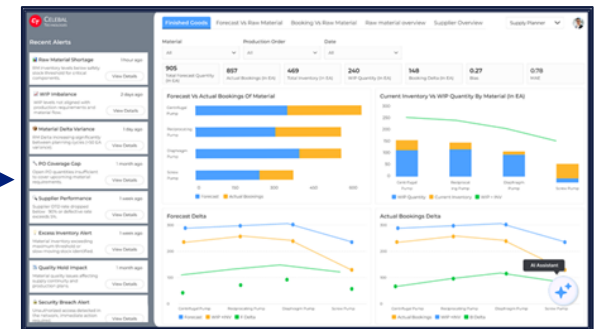
## Push Notification/Alerts with Conversational AI (6 Persona)



## Analytics

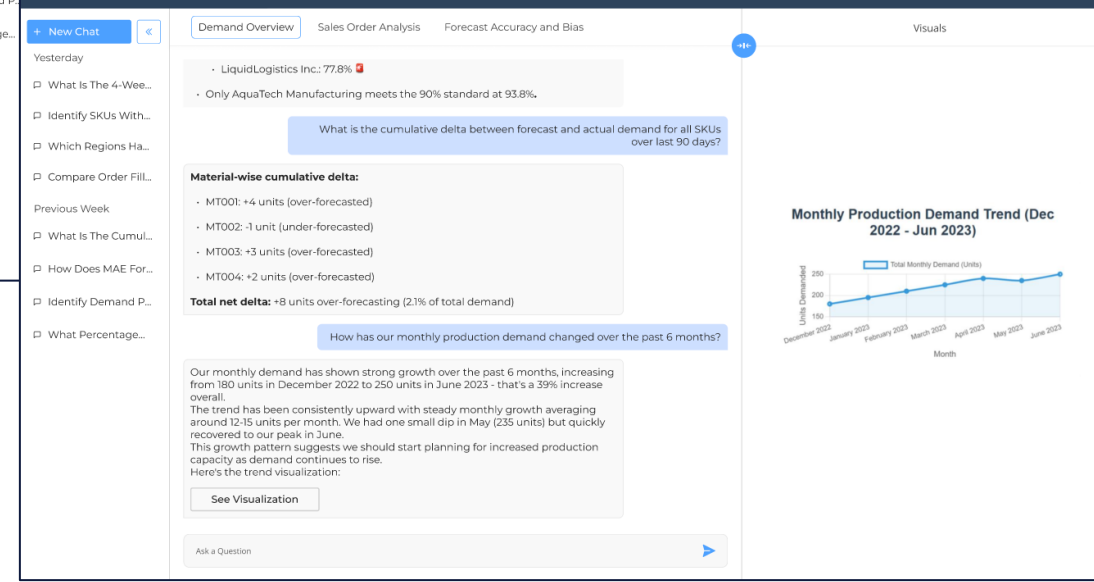
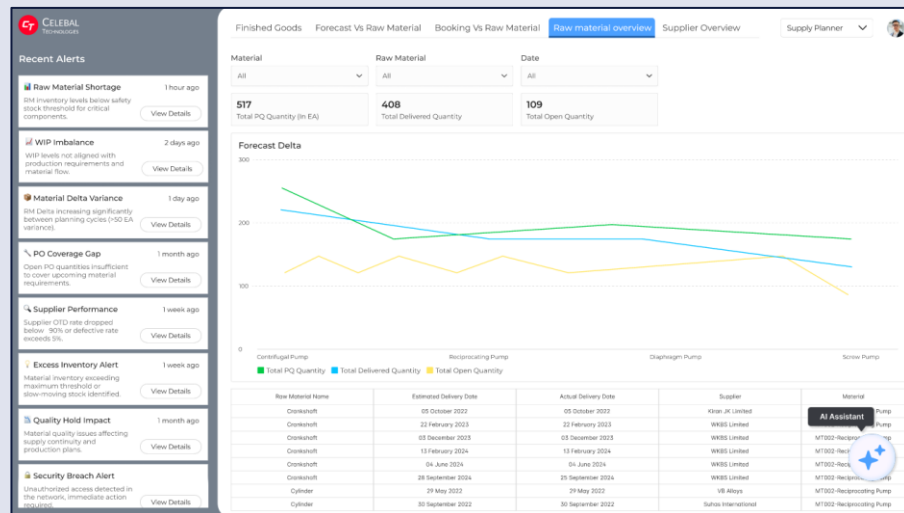
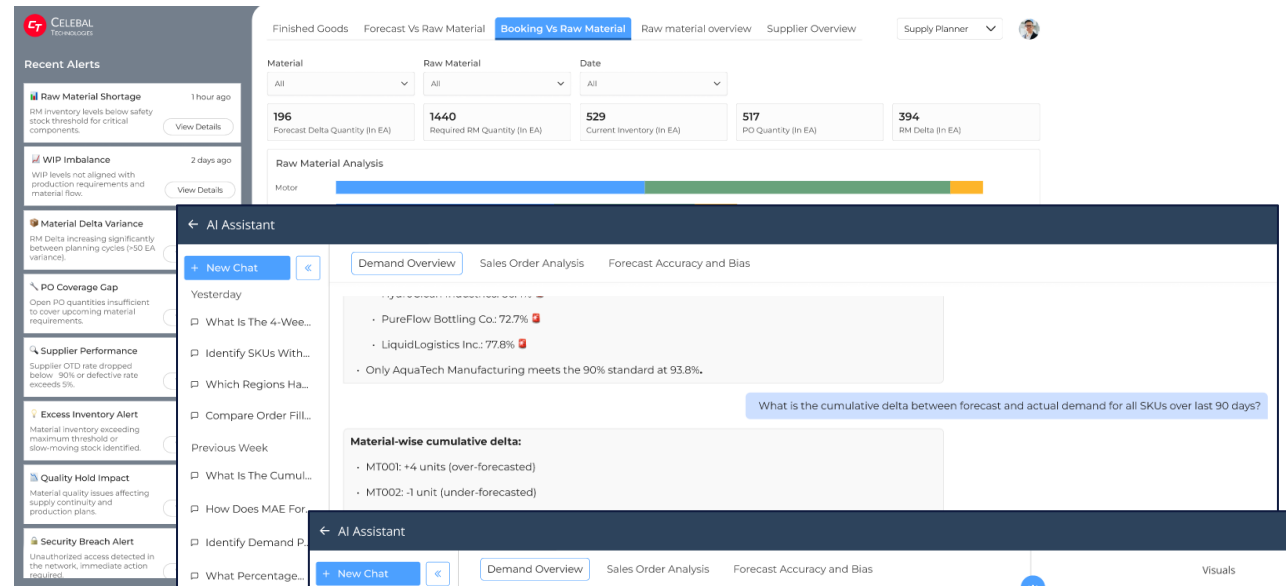
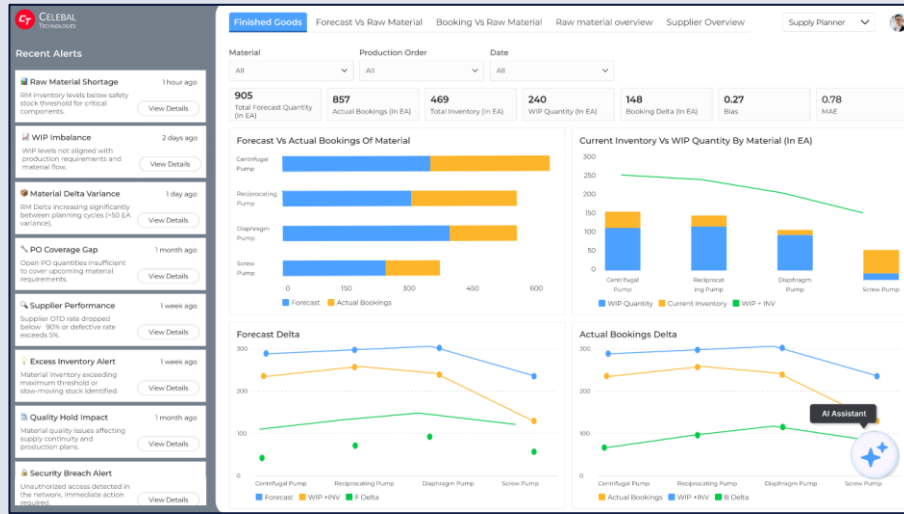


Gen AI-  
powered  
dashboards





# Solution Snapshots

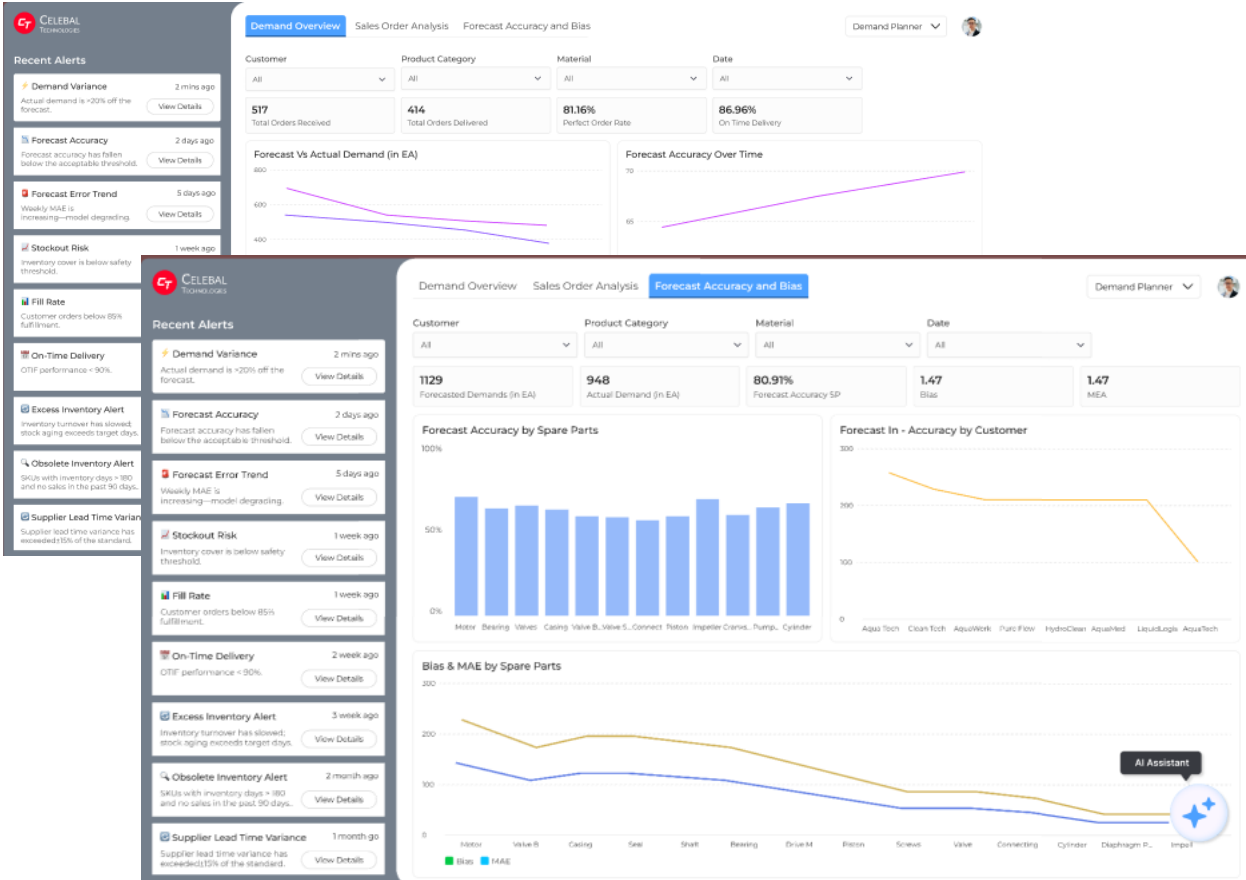




- Demand trend insights
- Sales Order Performance Monitoring
- Bias & Error Identification

## KPIs(11)

Forecasted demand	Actual demand	Perfect Order rate %	On time delivery %
Bias	Order Fill rate %	Total Order received	Forecasted Accuracy %
Total order delivered	MAE	Delta	





- Demand and Supply Alignment
- Proactive Shortage Identification
- Improved Order Fulfillment Rates

## KPIs(16)

Forecasted  
Demand

Actual Demand

Total Inventory

WIP Qty

Booking Delta

Required FG  
Quantity

Required RM  
Quantity

RM Inventory

PO Quantity

RM Delta

Total Delivered  
Qty

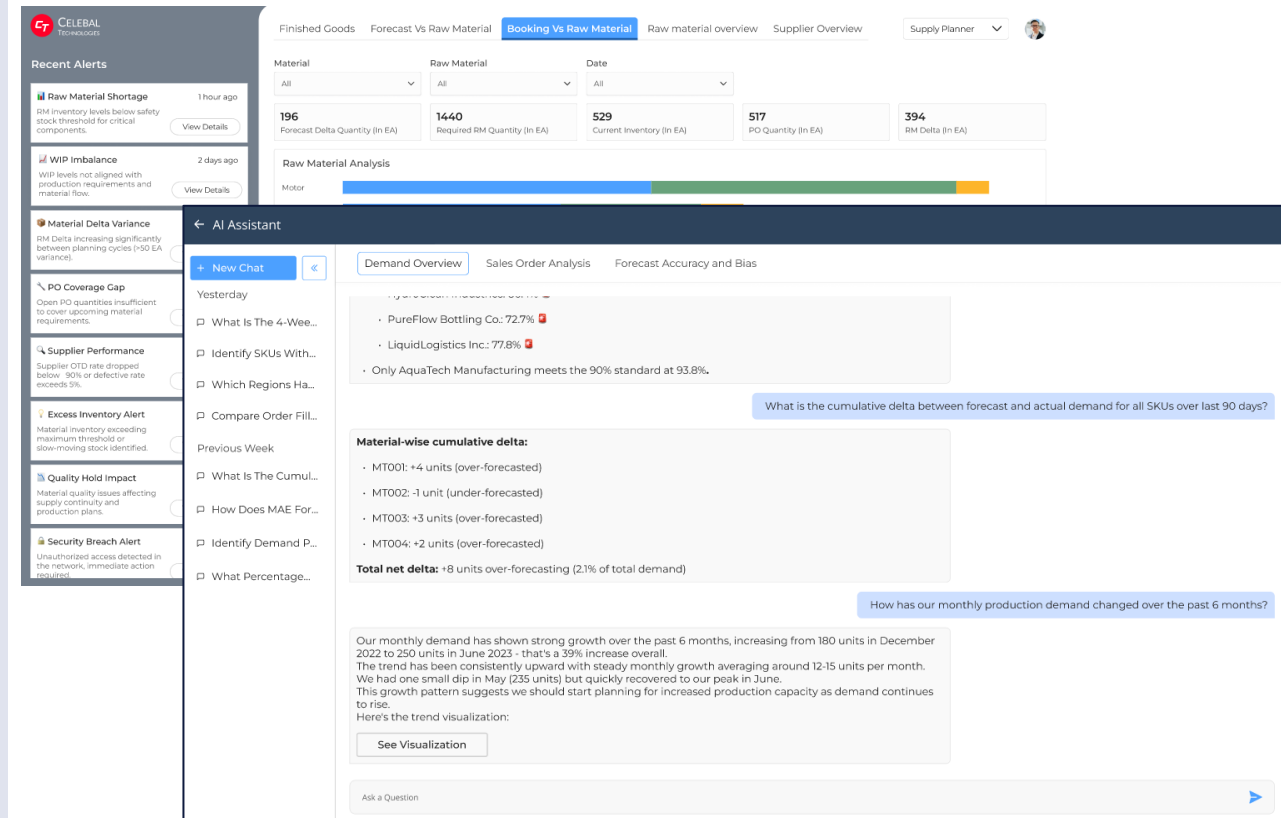
Total Open Qty

RM Perfect Order  
Rate %

RM Lead Time

RM Defect Rate %

RM Reject %

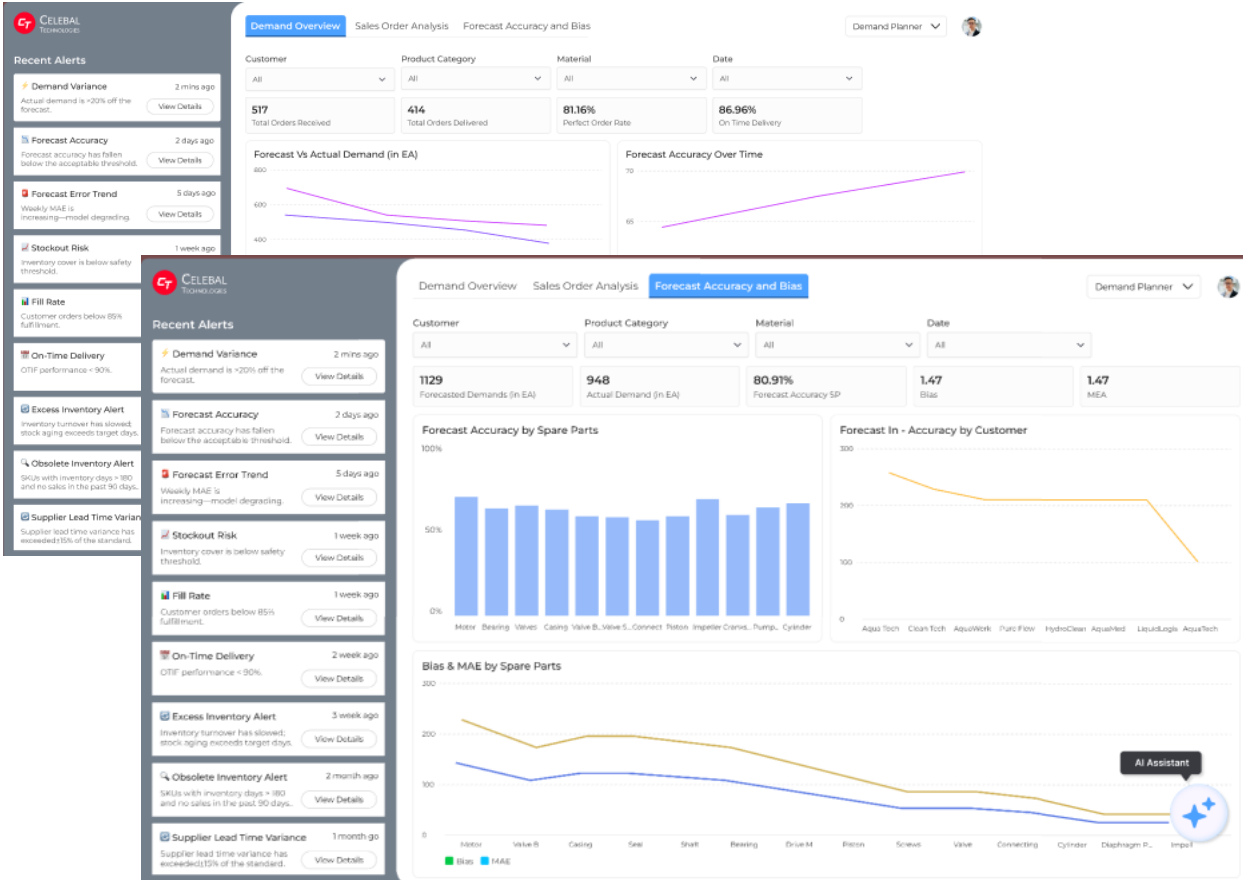




- Enhanced procurement efficiency,
- Procurement process visibility
- Supplier performance identification
- Cost savings opportunities and price trends

KPIs (13)

Total PR Qty	Total PO Qty	Material Shortage Count	Return %
OTD %	Defect Rate %	Total Budget	Total Price
Total Saving	Lead Time RM	Supplier Rating	PO Cycle Time
Saving %			





- Faster Resolution
- Quality Improvement

## KPIs (7)

Supplier Defect Rate (SDR)

Material Rejection Rate

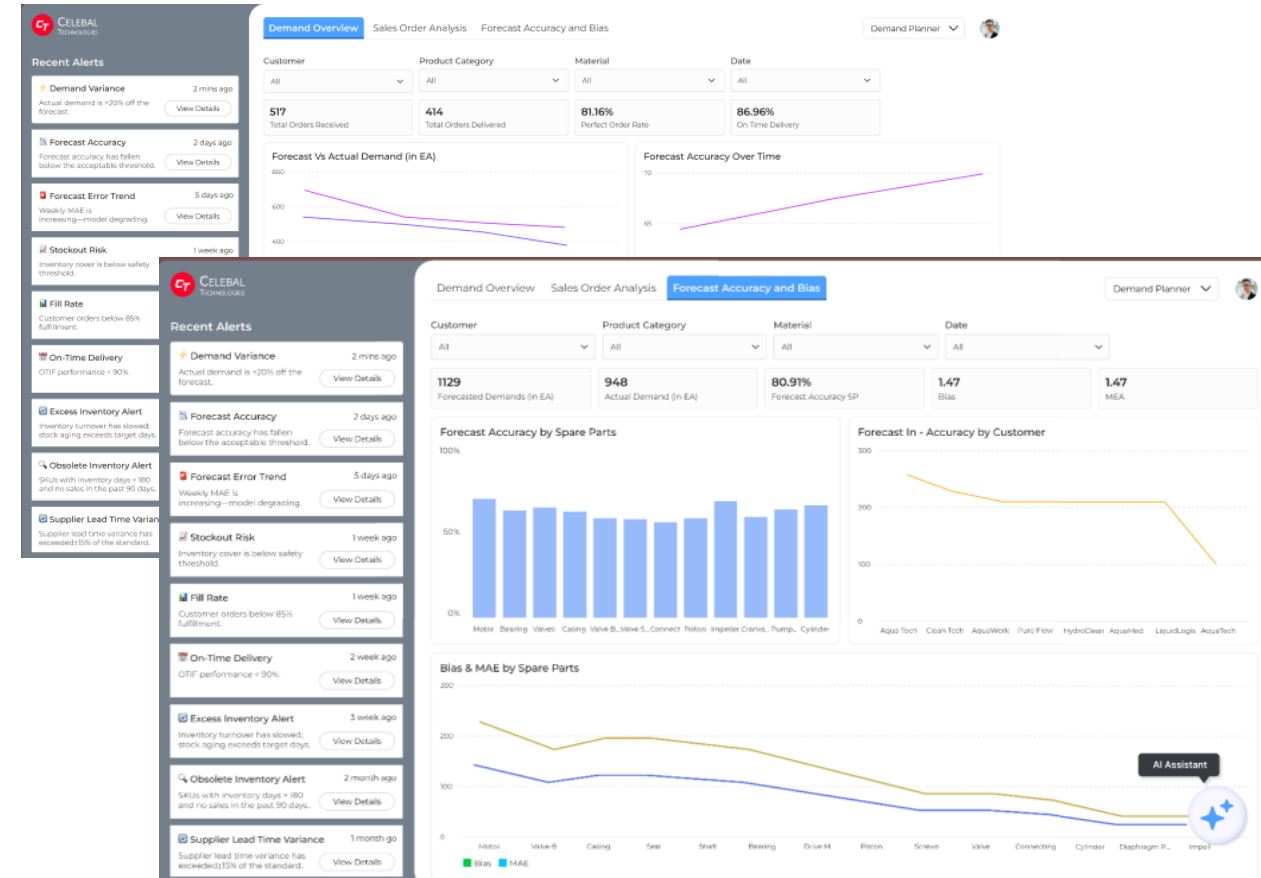
Supplier Quality Index (SQI)

Supplier Non-Conformance Rate (NCR)

Corrective Action Effectiveness (CAE)

Supplier Audit Score

Supplier Rating





- Comprehensive Inventory Overview
- Material Consumption Visibility
- Dispatch Performance Visibility
- Aging Inventory Visualization

## KPIs (9)

FG Total Inventory

Unrestricted Qty

Safety stock

Return Qty

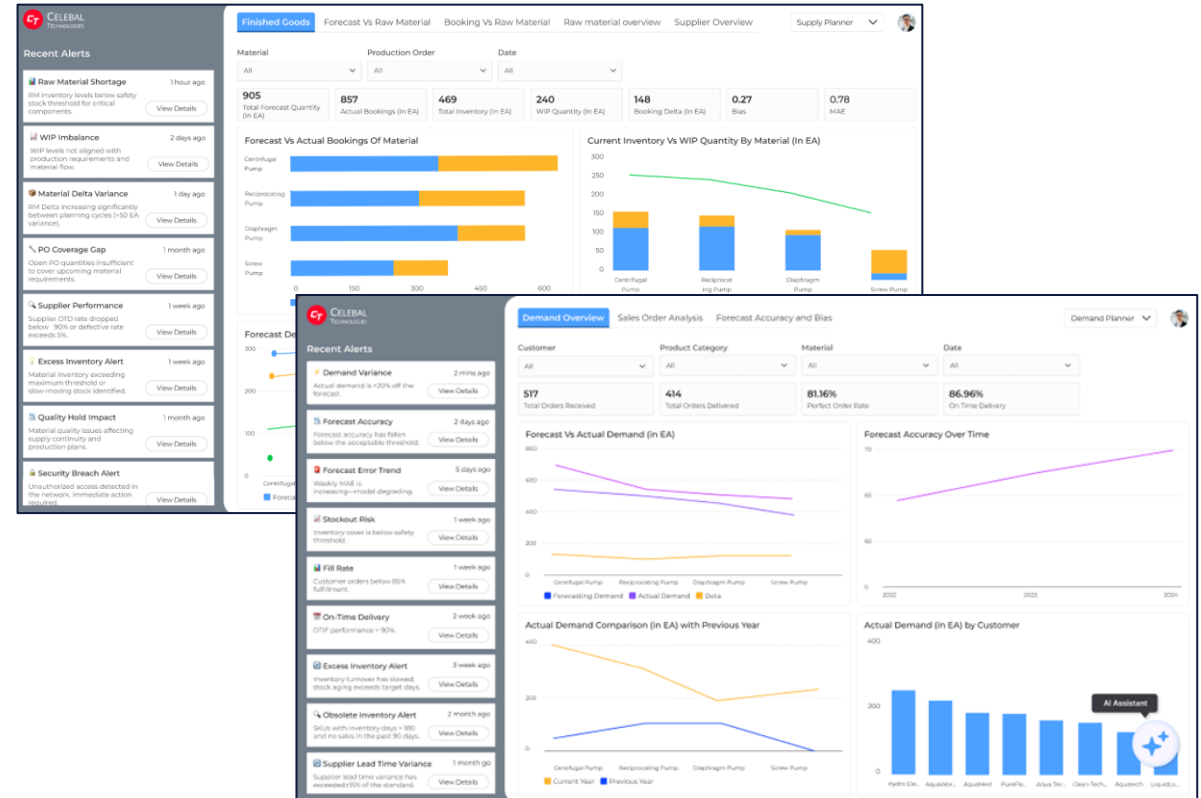
Inventory turnover

Inventory aging

Dispatch efficiency %

blocked Qty

Dispatch Qty





- Delivery Performance Metrics
- Delivery Mode Insights
- Missed Delivery Analysis

## KPIs (6)

Total planned deliveries

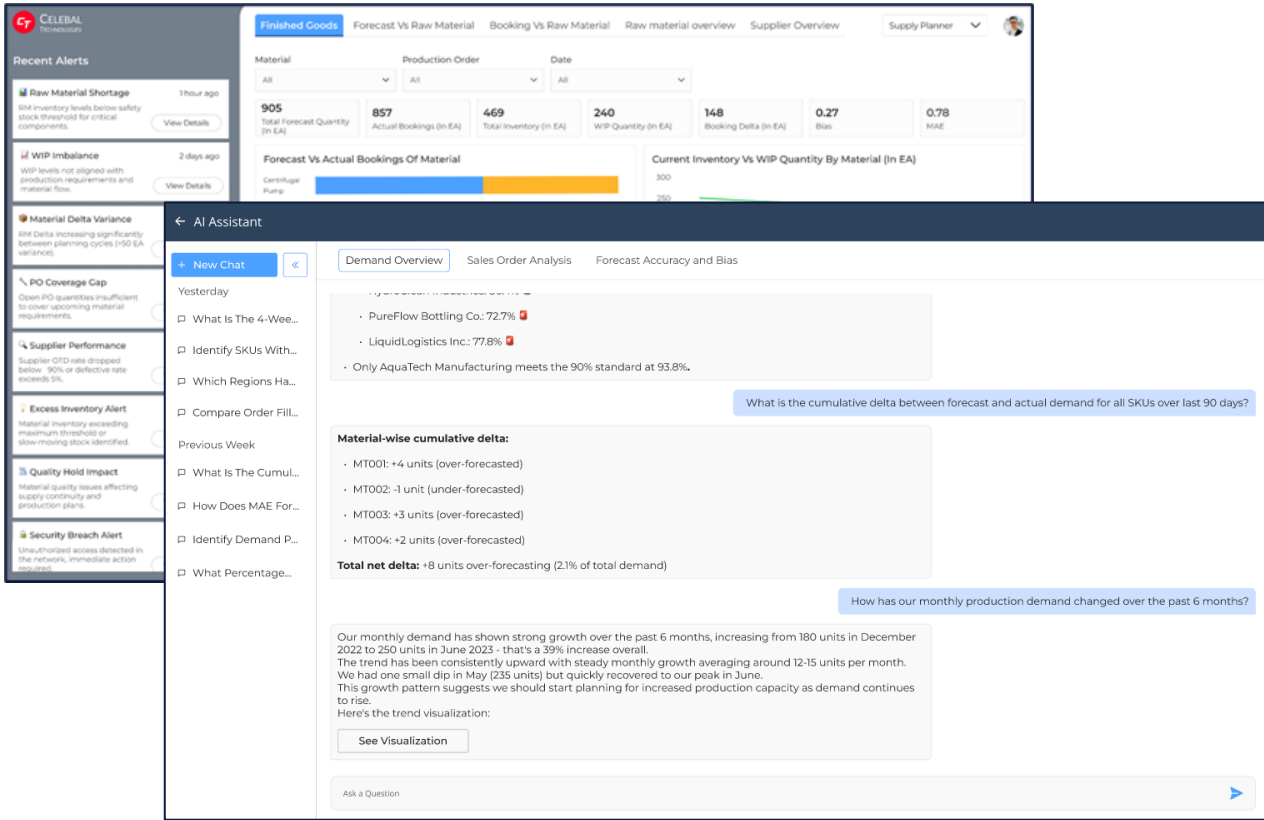
Total delayed deliveries

Total actual deliveries

Average delivery time

Total missed deliveries

OTD %





## Tables ( 12 )

EKKO  
EKPO  
BKPF  
LFA1  
VBAK  
MARA  
RESB  
MSEG  
QALS  
LIKP  
LIPS  
AFRU



### EKKO

- Total Spend

### EKPO

- Spend Forecast
- Supplier Analysis

### BKPF

- Spend by category

### LFA1

- Supplier type
- Supplier diversity

### VBAK

- Demand

### MARA

- Raw material costing

### RESB

- Consumption

### MSEG

- Issue Quantity

### QALS

- Defect rate

- Blocked Qty

### LIKP

- On time delivery

### LIPS

- Delivery Information

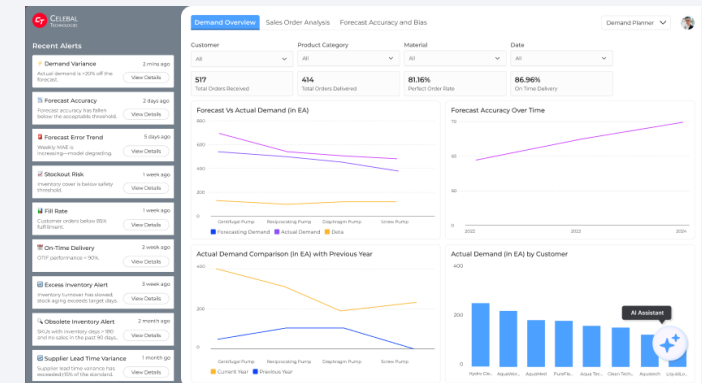
### AFRU

- WIP
- Assembly time

Data  
pipeline



## Dashboard







CELEBAL  
TECHNOLOGIES

# Thank You