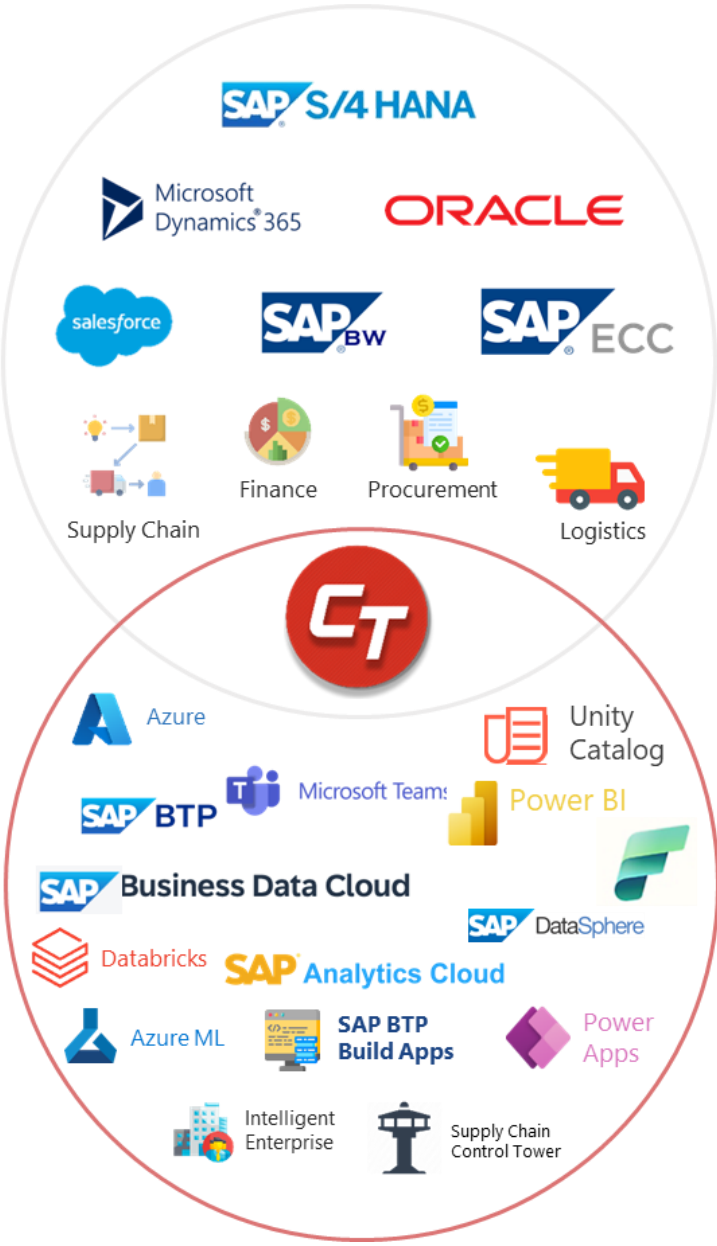





Microsoft Fabric: 4-Week Implementation

Traditional Enterprise Meets Modern Cloud Solutions



**Microsoft**
Solutions Partner

Microsoft AI
Partner of the Year - Global

Microsoft Rising Star
Partner of the Year - APAC

Microsoft Country
Partner of the Year - India

Microsoft AI
Partner of the Year - India

Azure Data AI
Partner of the Year - Malaysia

**databricks**
Elite Partner

Databricks
Partner of the Year - APJ

Partnerships

**Microsoft**
Solutions Partner

**databricks**
Elite Partner

**SAP**
Silver Partner

**sigma**

**aws**
PARTNER
Advanced Tier Services

**3000+**
Employees

**1550+**
Azure
Certifications


**500+**
Data Scientist
Certifications


**1000+**
Databricks
Certifications


**Advanced
Specialization**


- AI & Machine Learning
- Advanced Analytics
- Infra Migration to Microsoft Azure
- Kubernetes
- Cloud Security
- SQL server and Windows Migration server and Windows Migration


Industries We Serve


**Manufacturing**


**Retail & CPG**

**Financial Services**

**Energy & Sustainability**

**Healthcare & Life Sciences**

**Media & Entertainment**

**Education**

Global Presence

Americas | Europe | Middle East | APAC (India, SEA, Australia, Japan)



Data, AI, Apps & Infra



Big Data (ADX, Cosmos)



Fabric



Open AI



Cognitive Vision



Databricks



AI/ML



Azure VM



Azure



DC Migration



VPN Gateway



Load Balancer



SQL Database



Application Modernization



Azure DevOps



Super Apps

Reduced Cost, Faster Development, Insightful Data



Security



Identity Governance



Microsoft Entra ID



Multi-Factor Authentication



Endpoint Management



Azure Sentinel



Zero Trust



Defender for Cloud



Defender for Cloud Apps



Defender for Endpoint



Microsoft Purview



Azure Policy



Defender XDR

Secure your Data and your business



Modern Workplace & Business Apps



Microsoft Viva



CoPilot



SharePoint



Microsoft Teams



Power Apps



Power Platform



Power Automate RPA



Power BI



Microsoft Dynamics 365

Enhanced productivity, ease of business



450+

Certified Professionals

- Skilled and Microsoft Fabric Analytics Engineer Associate Certified Employees

40+

Project Delivered

- Successful Project deliveries for various use cases including Migration

75%

Industry Verticals

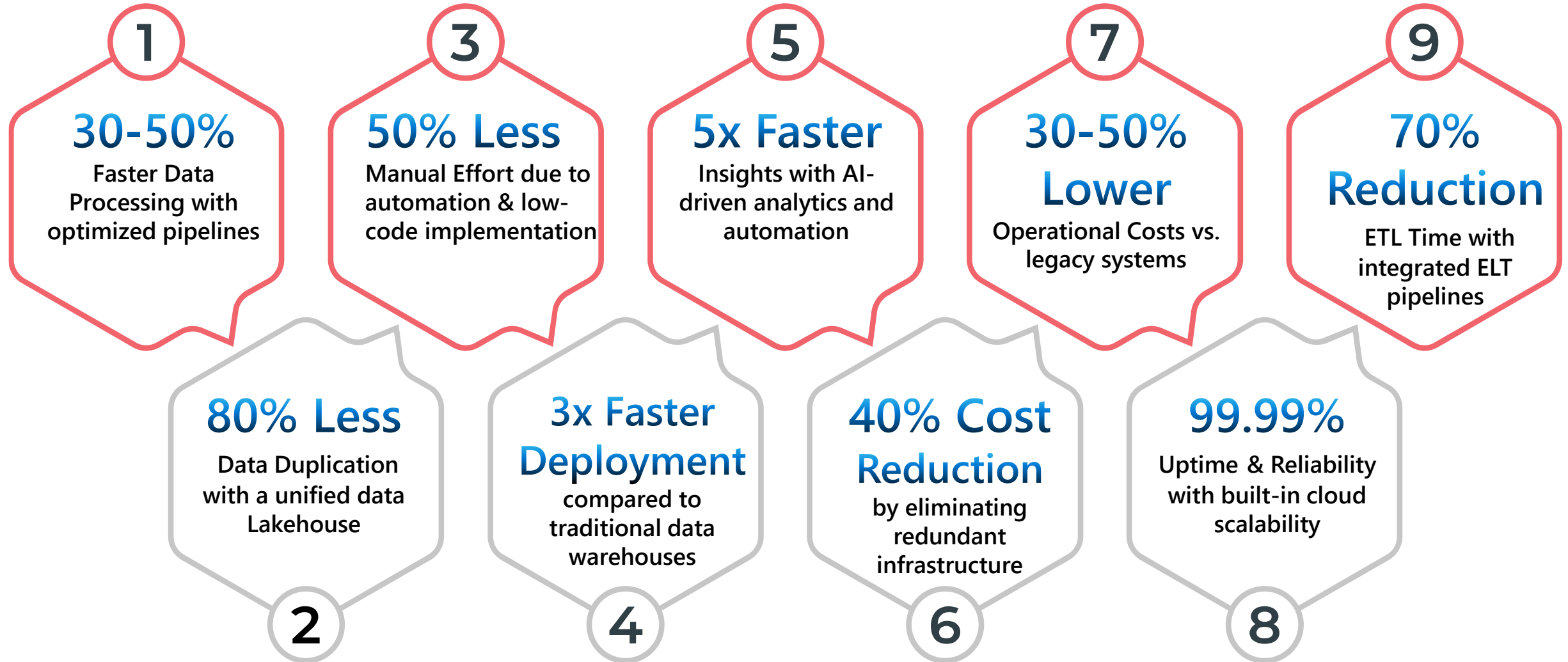
- Served in Healthcare, Law firm, Telehealth, Aviation, manufacturing, Life Science, Retail & CPG, etc.

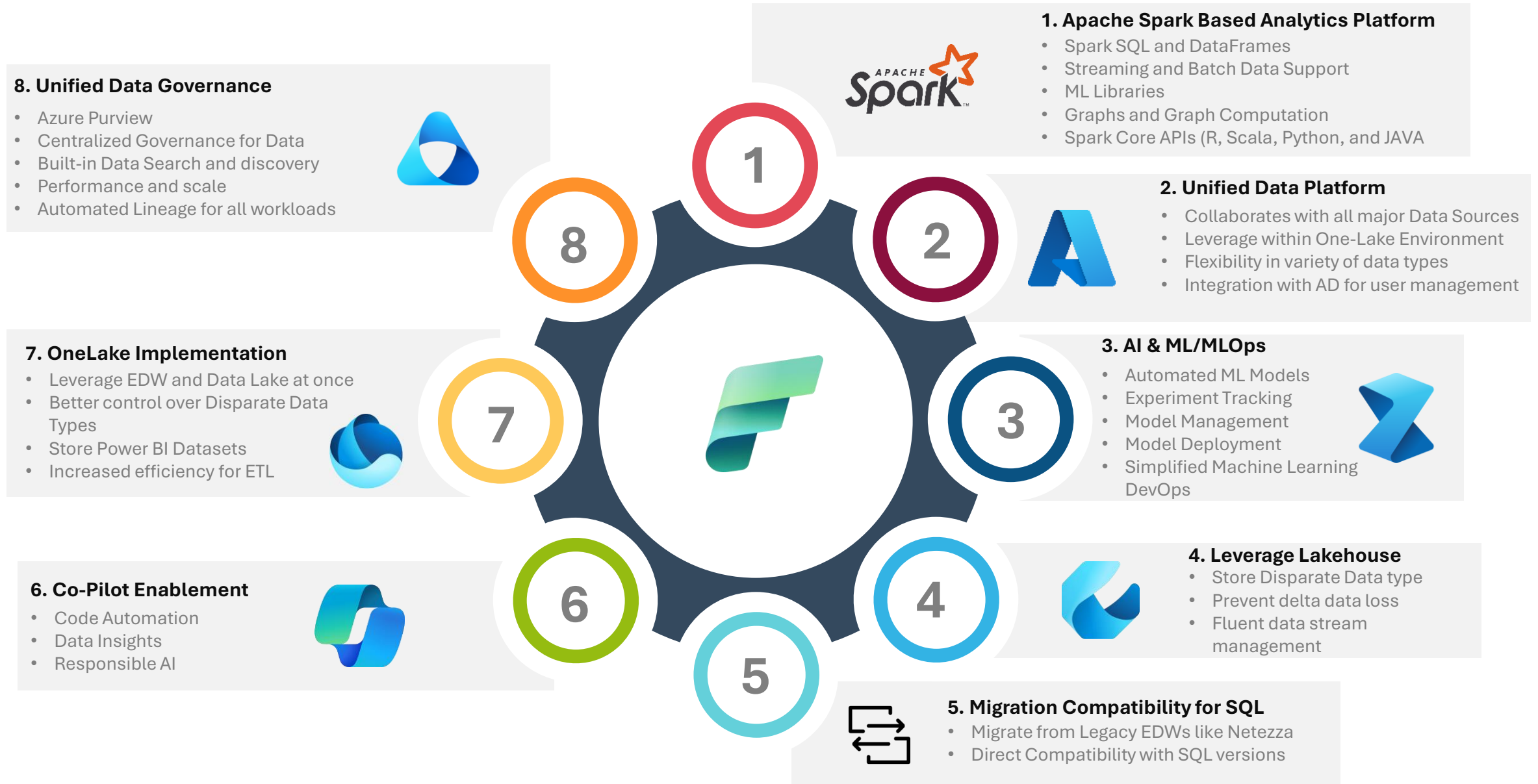
50+

Fabric Experts

- Fabric Experts ensure performance standards .

Measurable Benefits of Microsoft Fabric Adoption





Experience Excellence: MS Fabric with Celebal Tech

Single source of Truth



With CT's knack for ingesting data from different sources, let's build your ultimate data hub on OneLake.

Scalability and flexibility



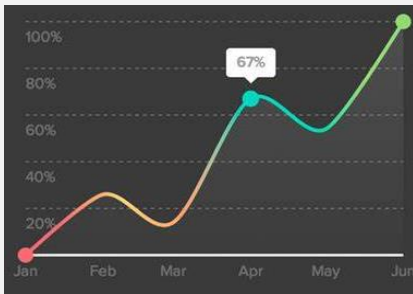
Our experienced solution architects we'll curate a solution that can grow and adapt with you.

Ease of Use



Post-Implementation, we offer documents and runbook that provide seamless support and guidance.

AI-powered insights



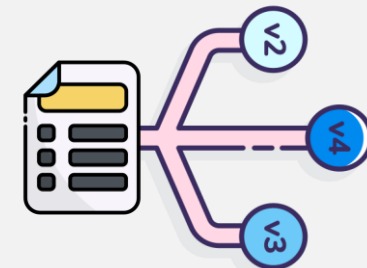
Our in-house Co-pilots are custom-built to help you achieve specific goals, giving you the AI-powered insights you need.

Security and Governance

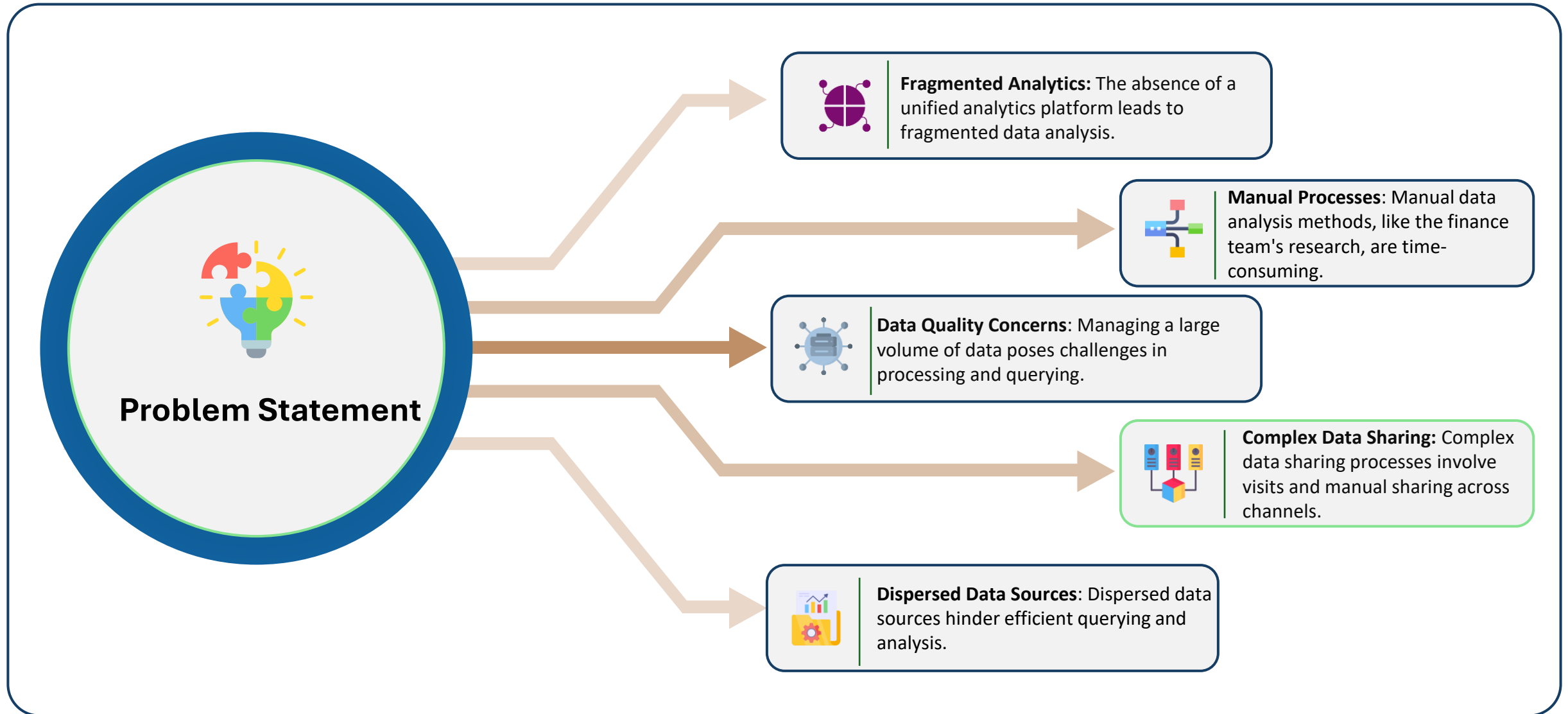


Dedicated engineers ensure seamless Data governance through Purview, maximizing its capabilities effectively.

Enhanced Quality



We use frameworks and methods that follow Industry best practices to create the most efficient solutions for you.



- **Operational Efficiency:** Streamlines processes and reduces manual efforts, leading to time and cost savings.
- **Informed Strategy:** Empowers strategic planning with accurate and timely data insights.
- **Regulatory Compliance:** Ensures data privacy and compliance with regulatory requirements through automated data classification and secure sharing.
- **Enhanced Collaboration:** Facilitates better collaboration across departments by providing a unified data platform.
- **Scalability:** Supports growth with scalable infrastructure, adapting to increasing data volumes and evolving needs.
- **Competitive Advantage:** Provides a competitive edge by leveraging advanced analytics.





Fabric Onboarding



Phase 1

Pre-requisites
Fulfillment



Phase 2

Assessment and
Planning



Phase 3

Proof of Concept/ MVP

In a typical process, various stages comprise a sequence of interconnected phases, where each phase relies on the accomplishments of the preceding one. Together, these phases facilitate the smooth transition from initial assessment through migration to the subsequent optimization and the establishment of ongoing governance.

Pre-requisites identification and provision on time will increase the rates of on time completion while in depth assessment and planning phase will help the CT team to provide the best suited solution and implementation plan.

- Seamless implementation post these phases
- Identify bottleneck efficiently and provide feasible solutions
- Avoids iteration of solution changes due to new information mid project.



Pre-requisites

- Provision of the workspace by client
- Access to the required artifacts to assess the landscape
- Current solution documents and artifacts
- Align required SMEs and PoCs
- Understanding of the process and flows in the current system
- Identify the high-level issues and bottlenecks.
- CT to understand the problem statement

Assessment and Planning

- Current landscape assessment.
- Understanding the provided technical documentation
- Architecture assessment & Design evaluation
- Full System Audit to understand dependencies and complexities
- Framework Design and Automation
- Deep dive in a bottleneck as part of RCA.
- Provide a solution addressing the issues and other required features
- Project plan, timelines, and solution architecture finalization

We will take a Phased delivery approach to deliver this migration. It will help:

- Realize incremental value throughout the Fabric lifecycle.
- Deliver functionality or features in iterative way to provide early wins
- Demonstrate progress along the way
- Gather user feedback to inform subsequent phases
- Maximizing value realization and user satisfaction.



MVP

- Architecture assessment & Design evaluation
- Full System Audit to understand dependencies and complexities
- Prototyping of Architecture Components
- Framework Design and Automation
- Develop one use case/Report end to end to Fabric
- Deployment & Parallel Runs
- Data Reconciliation
- Connect Reporting layer to Synapse warehouse in Fabric
- Perform Benchmarking test to meet user SLA
- Refine proposal and for Scale out phase

Post implementation support and expansion will ensure the successful delivery of the solution and leveraging the solution for deeper insights. It will-

- Ensure the stability of the solution
- Leverage the Fabric capabilities



Factors Affecting the Sizing of Cloud Migration Assessments

Technical

- 1) **Data Volume:** Size of data, number of database/tables to be migrated.
- 2) **Data Source Integration:** No. of sources to be integrated, it can be batch loads or streaming.
- 3) **ETL Complexity:** Complexity of ETL logics to be converted/migrated.(Simple, Medium or Complex)
- 4) **On-Premises:** Additional effort on Infra setup for On-Prem sources
- 5) **Customizations:** Customizations with respect to PBI reports, AI/ML use cases or Custom Data Quality logics.
- 6) **Reports size and KPI:** No. of KPI and pages per report, complexity of the reports.
- 7) **AI/ML Use cases:** No. of AI/ML use cases and type of use cases to be implemented

Commercial

- **Timeline:** The timeframe for Implementing the Fabric data platform.
- **Budget:** The allocated budget for the Fabric Implementation project.





Small

Data Size	~ 500 GB
# of Batch load sources	3
# of Streaming sources	0
# of BI Reports	2
# of AI/ML use case	0
# of third-party integration	~1
Data Governance	RBAC
Other features	N/A
Implementation Time	~4 Weeks



Small-Scale *~4 Weeks*

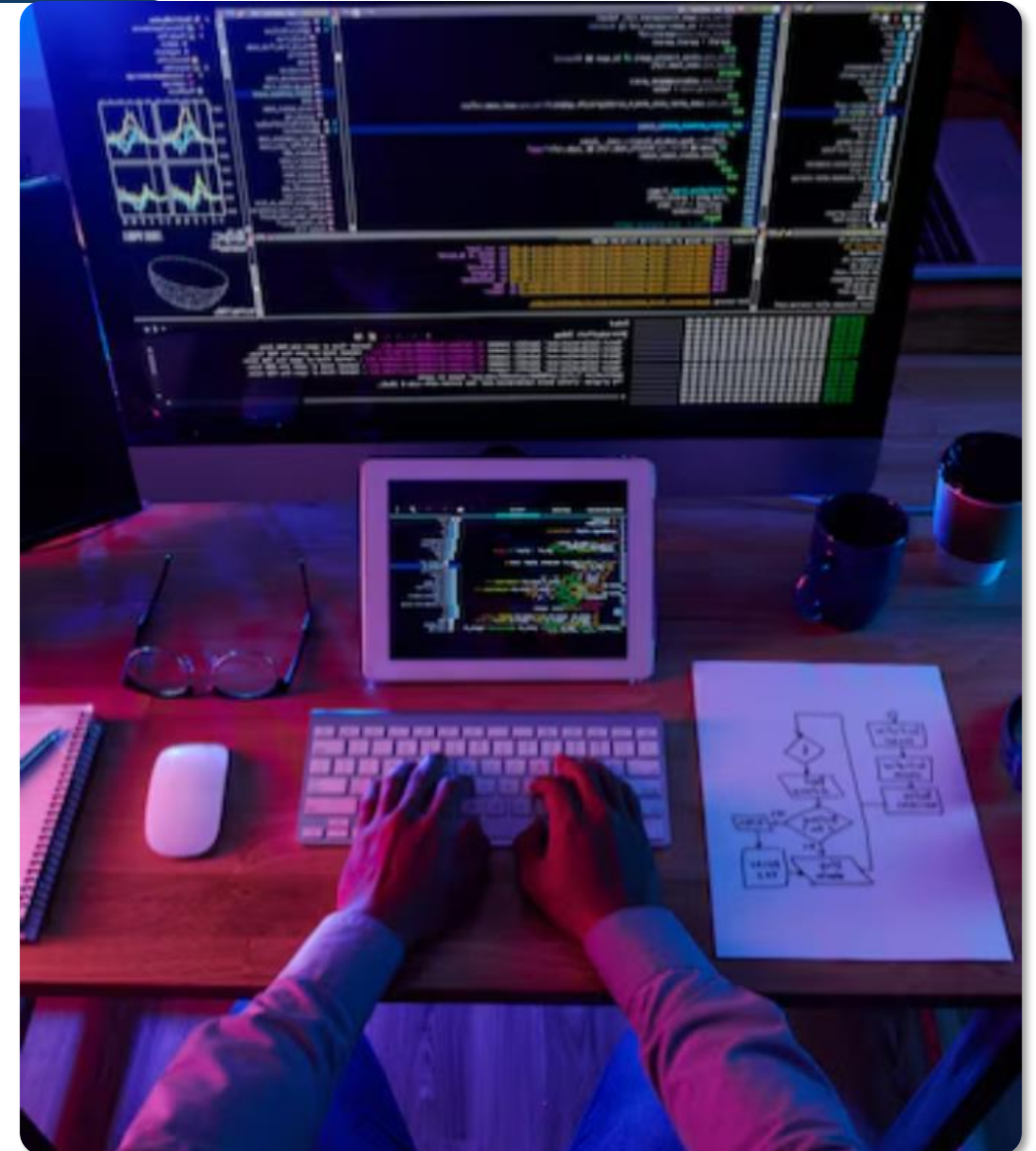
- ✓ 2 Dynamic BI Reports: Gain actionable insights at your fingertips.
- ✓ Scalability up to 500GB: Handle large volumes with ease.
- ✓ Batch Data Loading from 3 Sources: Effortlessly manage data influx.
- ✓ Streamlined Integration: Minimal reliance on third-party tools.
- ✓ Robust Data Governance with RBAC: Ensure security and compliance.

Milestone	W0	W1	W2	W3	W4
Infra Setup					
Assessment					
Data Engineering					
BI report					
Demo and Walkthrough					

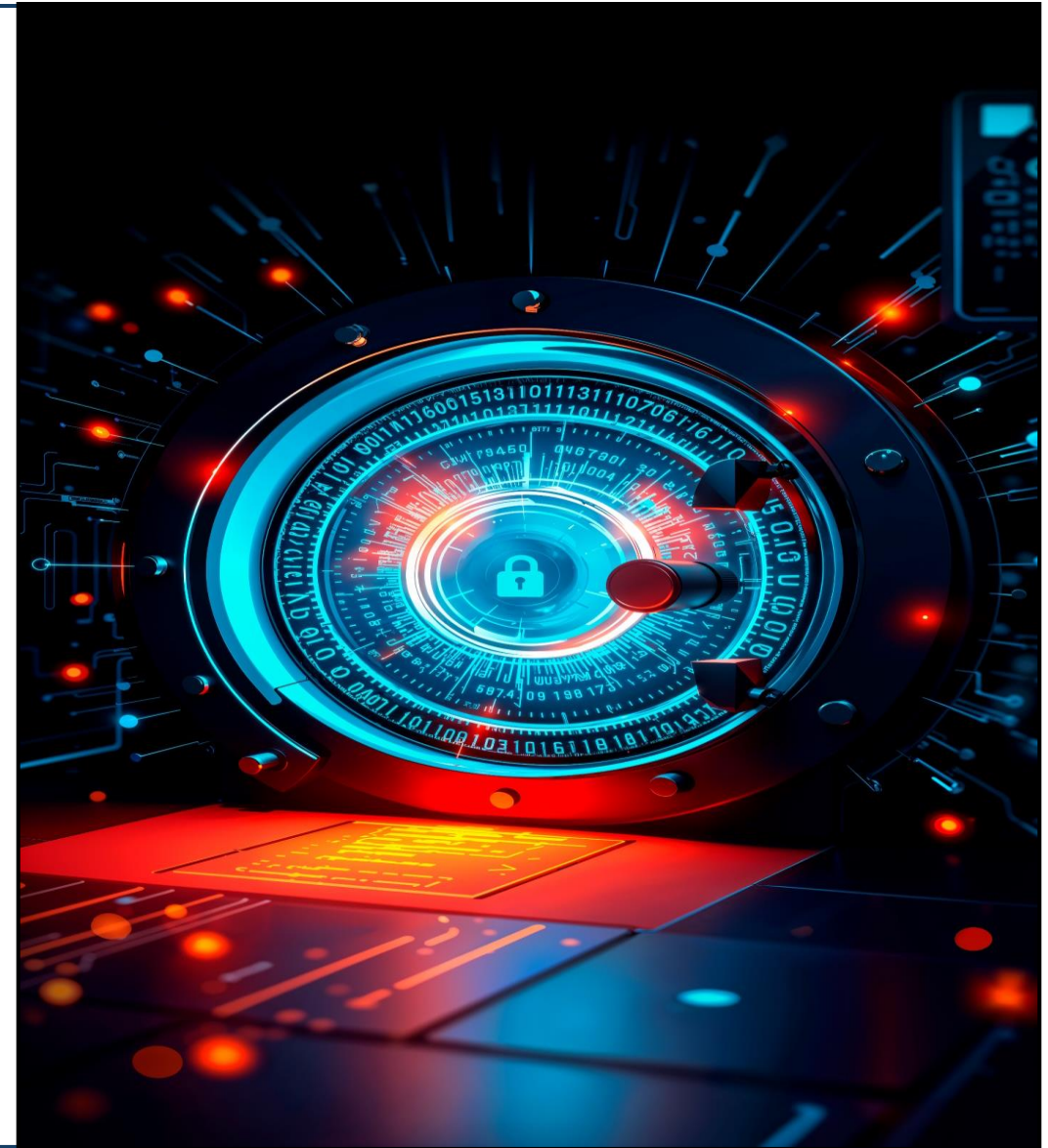
Small Scale



- **Stakeholder Commitment:** The customer's organization will provide the necessary resources, funding, and support for cloud adoption.
- **Data Security Compliance:** Customer's data complies with relevant regulatory and security requirements.
- **Data Classification:** Sensitive data is identified and classified for appropriate handling during migration.
- **Workload Assessment:** Existing workloads are assessed to determine their suitability for migration.
- **Team Skills and Training:** The IT team has the required skills and is open to training for effective cloud technology utilization.
- **Current IT Environment:** A clear understanding of the existing on-premises infrastructure is in place.
- **Resource Allocation:** A dedicated team with the necessary expertise is assigned to the cloud adoption initiative.



- Real time and near-real time data ingestion
- Implement CDC at source end
- Performance tuning of source system
- AI/ML Model creation
- Setup DevOps CI/CD.
- Setup multiple environment
- Data governance implementation
- Third-party integrations



- ✓ **Current Data Landscape, its Strengths, Limitations, and Challenges.** This deliverable offers a comprehensive overview of the organization's existing data ecosystem. It encompasses detailed documentation of the following aspects:
- ✓ **Data Assessment Report:** This report presents an in-depth analysis of the organization's data sources. It typically comprises the following components: Analytics Roadmap, Data activities, Business process & Technology.
- ✓ **Recommended Architecture for Data Platform:** This deliverable delineates the proposed technical architecture for the data platform, supporting data migration and ongoing data management.
- ✓ **Technology Stack:** This component defines the specific technologies, tools, and platforms for data migration and management processes.
- ✓ **Roadmap for Implementation with Phases:** This component defines the specific technologies, tools, and platforms for data migration and management processes.



Infrastructure and Access



Gathering access of Azure, VDI & all necessary resources and team onboarding

STEP 01

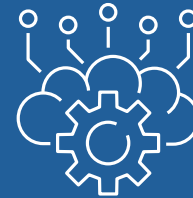
Requirements and Analysis



Identification of various data sources, data quality rules to be implemented, existing systems and finalizing the Scope of Work besides project plan

STEP 02

Build and Test



Develop and implement Data Quality framework, ETL processes, data governance and Reporting of Quality metrics besides other reports

STEP 03

Deploy



Deployment solution, documentation and sign-off

STEP 04

The architecture diagram is divided as per the activities executed.

Data Sources



1. Historic data will be loaded from data sources to One Lake through Fabric data factory. The daily data (incremental or snapshot) will be loaded from the sources mentioned.
2. Onelake will act as single source of truth for all the data sources to be integrated in future.

Data Transformation and Modeling (Transform)



1. The **Raw Zone** consists of data from single domain. There will be no transformations performed in the Raw Zone.
2. The **Enriched Layer** will have Data Validation and Quality checks. This data will be in a Data warehouse type model.
3. The **Curated Zone** will implement Data warehousing schema, and it will be the layer consumed for BI reports.

Data Ingestion



1. Batch loading for data into One Lake through Fabric data factory. A folder Hierarchy will be maintained, and the data will be segregated based on the sources
2. Data from SQL will be loaded through Fabric data factory

Analysis & Visualization



1. Views will be created, and KPI will be built on top of the curated data & results will be stored.
2. This will be the consumption layer which will fetch data from the Curated Layer of Fabric.



CELEBAL
TECHNOLOGIES

Thank You