

---

Power Platform Quick Start:

# Governance and Security Strategy Workshop

Governance and security are crucial aspects when it comes to deploying and using Power Apps in an organization.

**We Manage Your Enterprise Needs,  
So You Can Manage Your Business.**



# Agenda

1

Governance

2

Workshop overview

3

Administrator Training

4

Environment Strategy

5

Power Platform Readiness Assessment

6

Platform Ownership

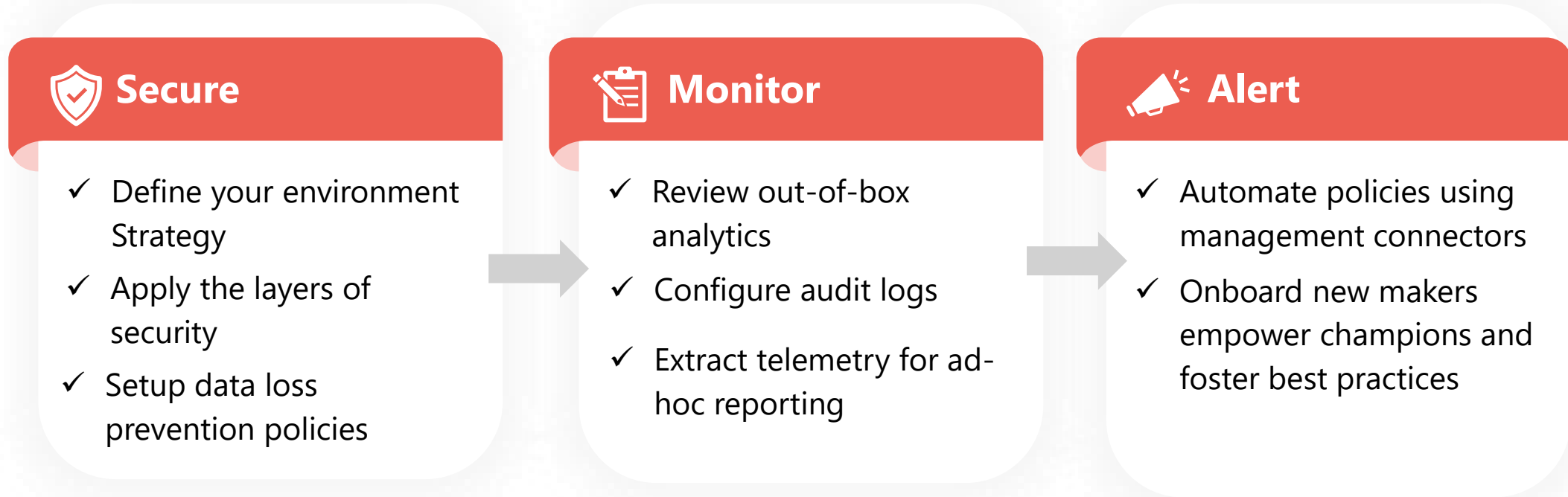
7

CoE Starter Kit Deployment

8

Timeliness & Resources





## Deploy and Manage



## Nurture and Educate



## Overview

The Microsoft Power Platform serves as a user-friendly solution for streamlining workflows and constructing business applications to facilitate digital advancement in your modern workspace. This empowers staff to develop and tailor data-centric, role-specific applications internally, promoting agility. However, while Power Apps offers the potential to address evolving business requirements, inadequate guidance might inadvertently compromise your company's security.

This workshop on Governance and Security Strategy offers comprehensive activities intended to assist you in strategizing and establishing objectives for upholding corporate best practices, ensuring security, and maintaining governance. All of this is achieved while making the most of the Power Platform to drive your organization's digital transformation.

### ? Why Act

- ✓ Transferring Knowledge: Security, Governance, and Administration"
- ✓ "Optimize Tool and Network Usage to Align with Your Strategy"
- ✓ "Master Platform and Data Access Management Techniques"
- ✓ "Assessing the Effectiveness of COE and Supplementary Tools in Power Platform Management"
- ✓ "Enable Creators for Enhanced Platform Adoption and Achievement"

### 🔄 Approach

- ✓ **Administrator Training**
  - Establishing Environments, Access, and Governance
  - Governing Capacity and API Constraints
  - Data loss prevention (DLP), security roles, and AD security groups
- ✓ **Environment Strategy:** ALM strategy, DLP environment , DevOps Setup , Landing Zones
- ✓ **Readiness Assessment:** Evaluation of current app and flow assets, environment strategy and maturity, recommended improvements
- ✓ **COE Starter Kit:** Toolkit deployment, evaluation, enhancement
- ✓ **Platform Ownership:** Fostering Adoption, Advancing COE Charter/Role & Cornerstones for Thriving Citizen Developers

### 🎯 Outcomes

- ✓ "Assessment of Present Strategy's Preparedness and Advancement — Platform, ALM, Security, Environment/Licensing, Adoption"
- ✓ "Established Platform Ownership — Forging a Collaboration Among IT, Business, and Creators"
- ✓ "Uphold Optimal Practices Enabling Administrators to Safeguard Security and Oversight"
- ✓ "Enhance Oversight and Validation of Approval Procedures"
- ✓ "Furnish a Structure Enabling Managed Expansion and Prospective Development"

## Deep dive through Power Platform administration:



Environments and environment access



Data Loss Prevention (DLP)



Controlling access to environments and environment creation



Security Roles and AD security groups



Management of capacity



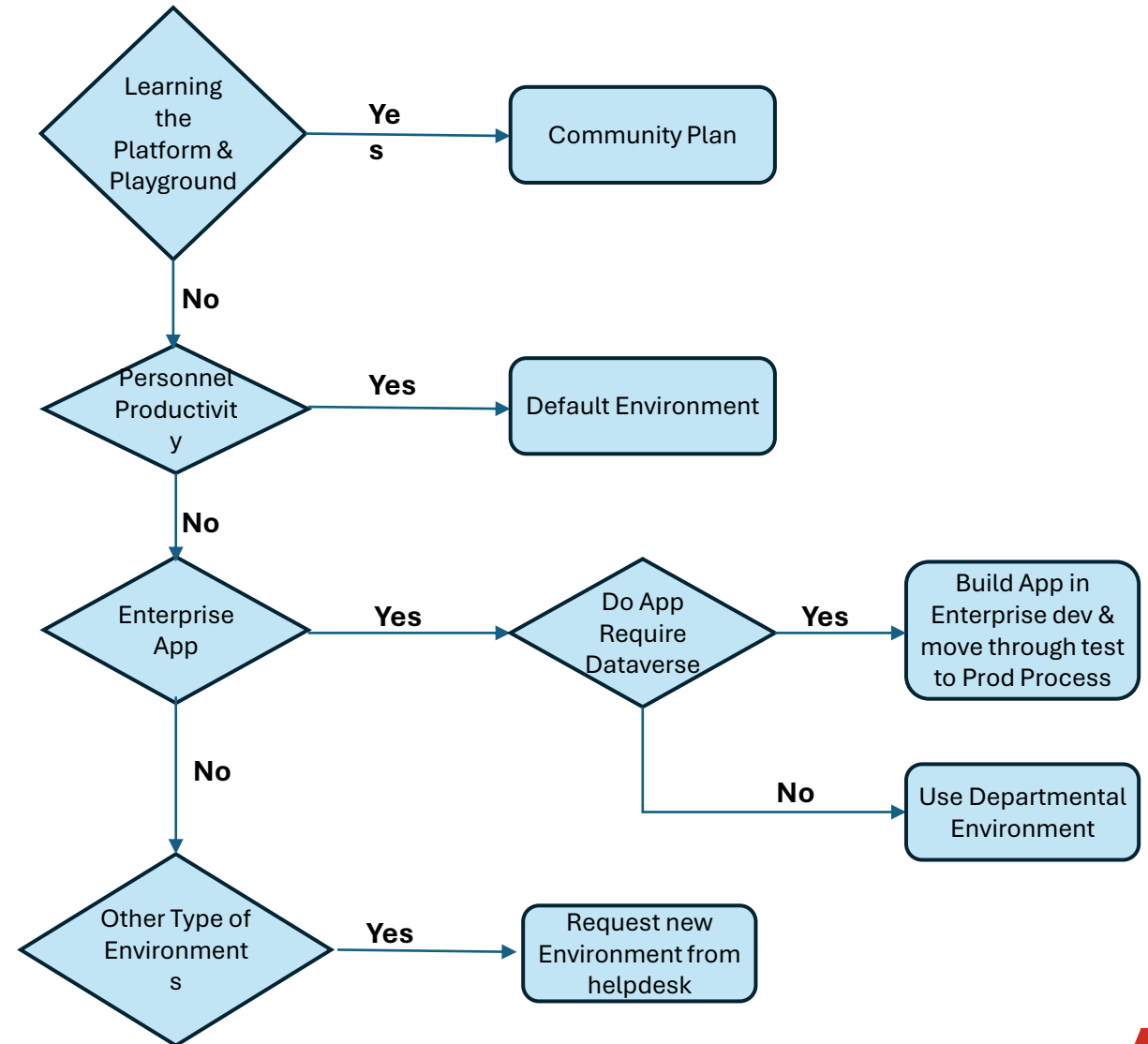
Center of Excellence (COE) Toolkit Implementation



Management of API limits

## Understanding the suitable purposes for distinct environment types:

- ALM strategy
- DLP by environment



## Power Platform Vigilance: A Comprehensive Review



Assessment of Existing App and Workflow Resources



Suggested Enhancements (Efficiency, Aesthetics, Design & User Experience)



Assessment of Current environment strategy



Governance Maturity Evaluation: Enhancing Oversight and Control

- Security
- Platform ownership
- Adoption
- ALM



**Platform Management**



**Enterprise Architecture**



**Application Lifecycle Management(ALM)**



**Mature Security Model**



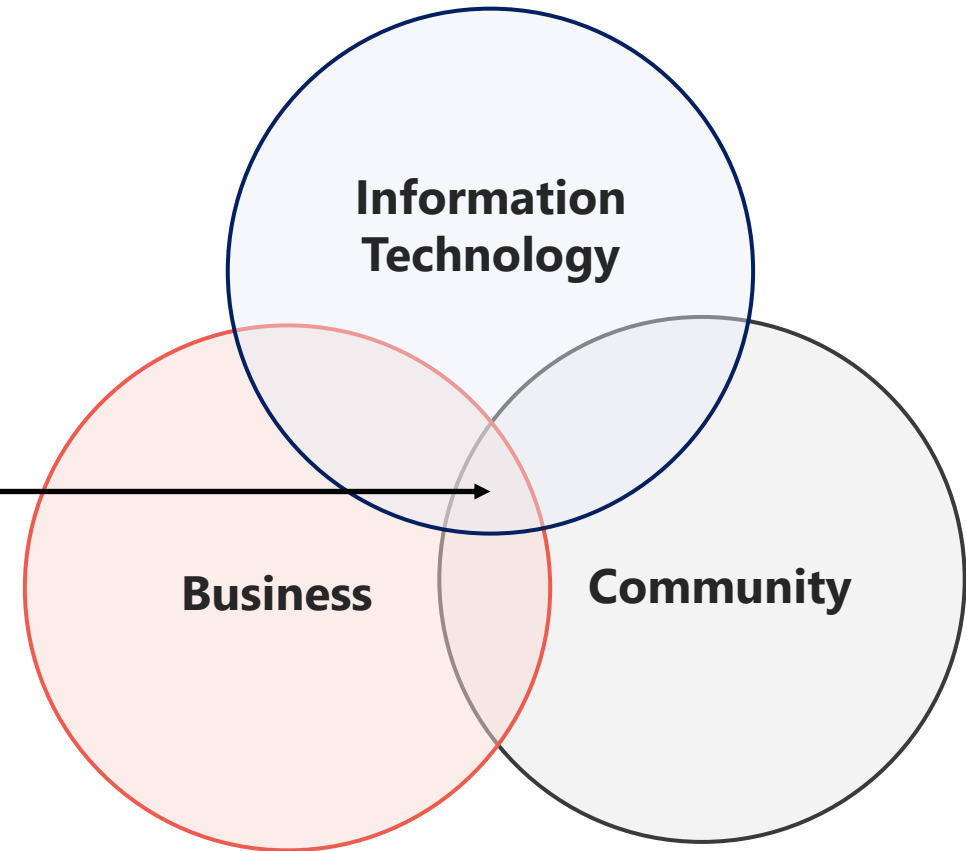
**User Empowerment**

## Who Owns this?



### Center Of Excellence

- ✓ Quick Wins, Proof of Concept, Larger solutions
- ✓ End to End Engagement with Business & IT
- ✓ Guidance & Governance
- ✓ High Performance and High Trust Environment
- ✓ Balance & Subject Matter Experts







## Deployment of Microsoft's COE toolkit



## Evaluation of the tools



## Enhancement of tools



### Overview

Define goals and unexpected outcomes of your CoE:

- Overview
- Motivation
- Download



### Admin

Gain insights into your Microsoft Power Platform adoption

- Setup
- Use
- Deep Dive



### Govern

Establish audit and compliance processes

- Setup
- Use
- Deep Dive



### Nurture

Accelerate your adoption by thriving with a community of makers

- Setup
- Use



## Governance Controls

- Set-up a Power Platform CoE to aid with governance.
- Define clear rules for apps to be compliant and a clear communication to owners about why their app is non-compliant and what can be done to achieve compliance.
- Establish a strict environment management strategy.



## Rollout

- Start with a smaller controlled group to roll out Power Platform capability - slowly expand to add more users.
- Define different app categories. Define end-to-end process for each category.
- Automated release management



## Security

- Enable cross-tenant isolation. If connection to specific tenants is needed allow that via the Allow List
- Discourage sharing an app with everyone. Restrict sharing the app to minimum level, share to an AD group instead of individual list of users.
- Restrict environment creation by Citizen Developers - enable this only for Admins.
- Develop a Request-Approval process for new environment creation.



## Monitor

- Monitor new changes and connectors being announced and evaluate any possible impact.
- App usage and categorization. Some apps might need to be recategorized depending on usage trends.
- Automated Alerts



## Adoption

- Define app templates for most common requirements.
- Organize sessions like 'Power Platform Hour' every week/month where Citizen Developers / SMEs can connect with pro-developers to discuss about issues and get help, or simply to encourage power community.

S.no	Training Agenda	W1	W2	W3	W4
<b>1</b>	<b>Importance of Governance and Security in Power Platform</b>				
1.1	Secure , Monitor, Alert process				
<b>2</b>	<b>Administrator Training</b>				
2.1	Environments and environment access				
2.2	Controlling access to environments and environment creation				
2.3	Management of capacity and API limits				
2.4	Data Loss Prevention (DLP)				
2.5	Security Roles and AD security groups				
<b>3</b>	<b>Environment Strategy</b>				
3.1	ALM strategy (CICD Pipeline)				
3.2	DLP by environment				
<b>4</b>	<b>Power Platform Readiness Assessment</b>				
4.1	Assessment of app and workflow				
<b>5</b>	<b>Centre of Excellence</b>				
5.1	Deployment of Microsoft's COE toolkit				
5.2	Evaluation of the tools				
5.3	Enhancement of tools				

S.no	Resources	Resource Count
1	Power App Admin	2
2	Infra Engineer	1
3	Power Apps developer	1
4	PM	1
5	BA	1
6	Power BI developer	1
7	Security Engineer	1
8	DevOps	1
	<b>Total</b>	<b>9</b>



# Thank You

Feel free to  
contact us at

---

[enterprisesales@celebaltech.com](mailto:enterprisesales@celebaltech.com)