



CELEBAL
TECHNOLOGIES

Supply Chain Explorer

Celebal Tech - Our Specializations and Strengths



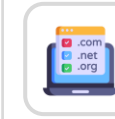
Key Strategic Partnerships



Advanced Specialization



- AI & Machine Learning
- Analytics
- Infra and Database Migration to Microsoft Azure
- Kubernetes
- Cloud Security



Deep Domain Expertise



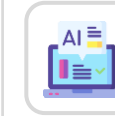
ISD Approved Partner



Azure Open AI industry driven Co-pilots.



ECIF Green+ AMM + Azure Innovate



AI Solutions To Help Retire AI Design Wins



IP Co-sell Partner with Marketplace Transaction and MACC enabled Solutions

3000+
Employees

1500+
Azure Certification

800+
AI Experience Professionals

250+
SAP Experts

Industries We Serve Globally



Manufacturing



Retail & CPG



Financial Services



Energy & Sustainability



Healthcare & Life Sciences

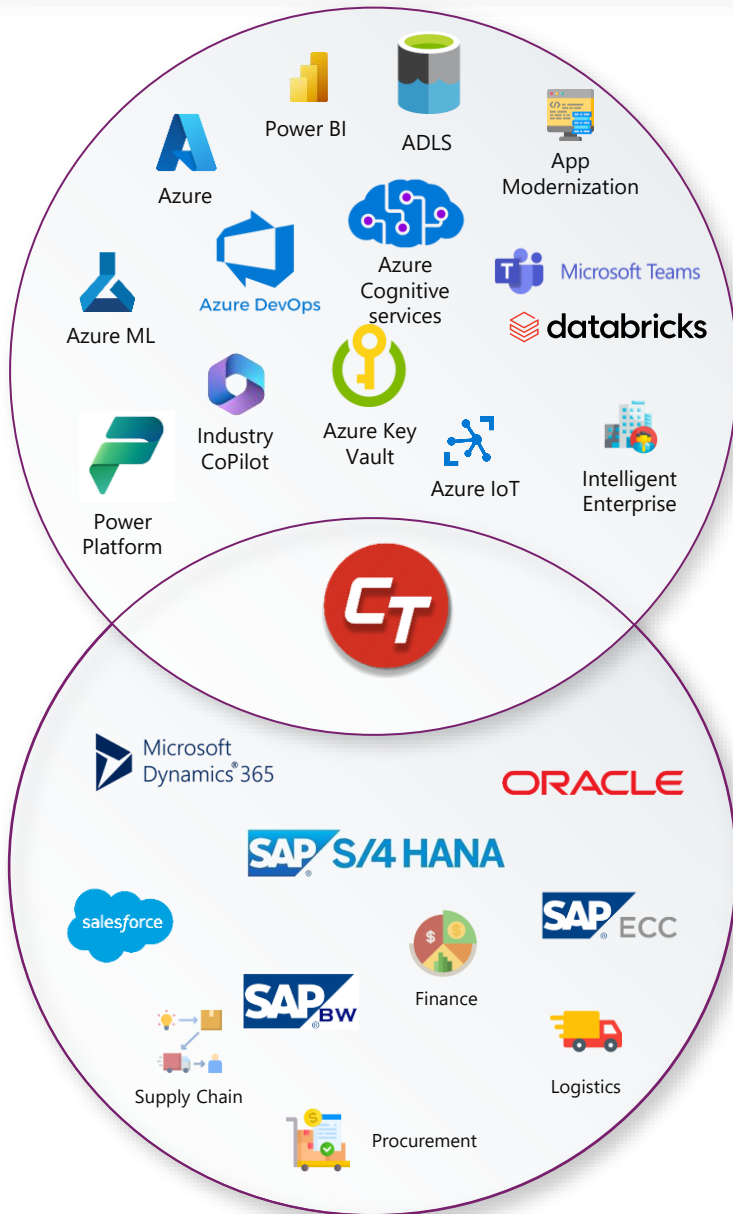


Media & Entertainment

US | INDIA | EUROPE | CANADA | APJ | MIDDLE EAST | AUS



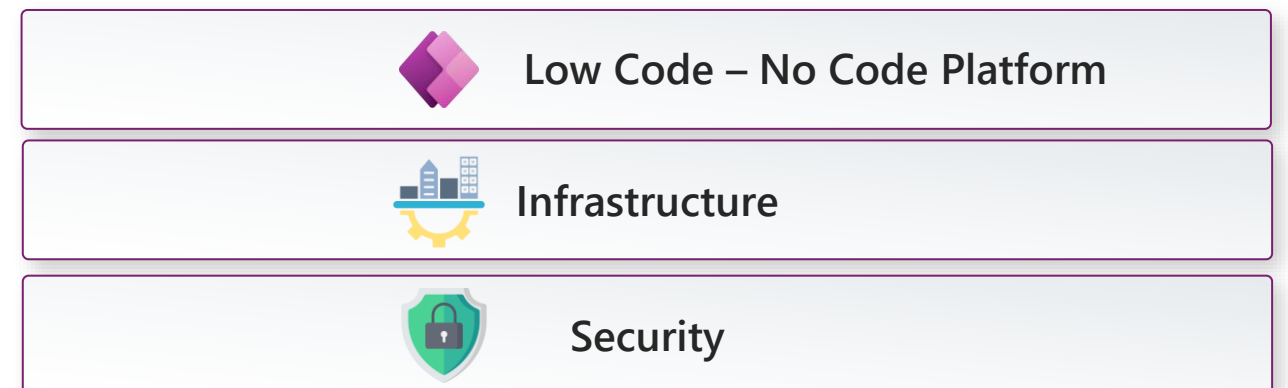
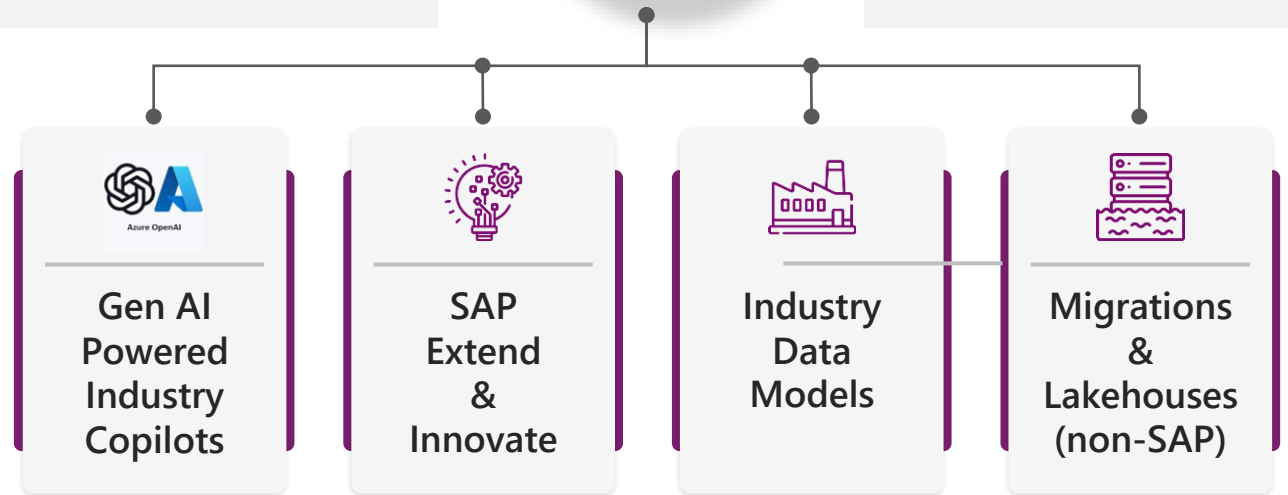
Traditional Enterprise meets Modern Cloud Innovation



- Deep Domain Expertise
- Open AI industry driven Copilots
- Premium Partner for SAP Extend and Innovate
- ECIF Green & Azure Innovate and AMM Cert.



- Partners with Microsoft Research
- IP Cosell Partner with Marketplace Transaction
- MACC enabled Solutions
- ISD Approved Partner



Business Value for Copilot enabled Supply Chain Explorer

Business Challenge

- Difficulty in accurate Forecasting
- Excess Inventory Costs
- Supplier Performance Gaps
- Long Lead Time Variability
- Missed Delivery Deadlines
- Quality issues in Raw Materials



Solution

A solution providing 360 view to empower your supply chain with persona specific LLMs for accessing Purchasing documents ,contract agreements and incoming inspection control plans along with Gen AI-powered Analytics to increase visibility, productivity and quality control.

Persona Benefits and Value Creation



Demand Planner

- Enhanced Demand Forecasting
- Order Fill Rate Optimization



Supply Planner

- Supplier Collaboration and Order Management
- Production Planning and Scheduling



Purchase Engineer

- Supplier Evaluation
- Contract Information



Quality Engineer

- Incoming Material Quality Inspections
- Quality Management Document Insights



Warehouse Manager

- Inventory Accuracy Enhancement
- Enhanced Stock Visibility



Logistic Manager

- Logistics Planning and Optimization
- Cost Reduction Analytics

Solution Content

Playbook

(Unstructured data from document repo)

Document Types

- Supplier Contracts
- Purchasing documents
- Quality Inspection documents

Analytics

(SAP data only)

- | | |
|---|---|
| <ul style="list-style-type: none">• Inventory Turnover Rate• Supplier On-Time Delivery• Production Yield Rate• Order Fill Rate• Stockout Rate | <ul style="list-style-type: none">• Lead Time Variability• Warehouse Utilization Rate• Procurement Cost Analysis• Transportation Cost per Unit• Quality Defect Rate |
|---|---|

Customer Key Facts



Implementation Window

~ 10 -12 Weeks



Implementation Cost

\$95k – \$105k

ROI



- 15 to 25 % Increase in Supply Chain Efficiency
- 10 to 25 % Incoming Quality Improvement
- 15 to 30% Improvements in Response Time

Dashboards (18) KPIs (52)



Sales Order
Analysis



Supplier
Performance



Delivery
Overview

Documents (1000)



Sales &
Operation
Planning



PO/PR
Documents



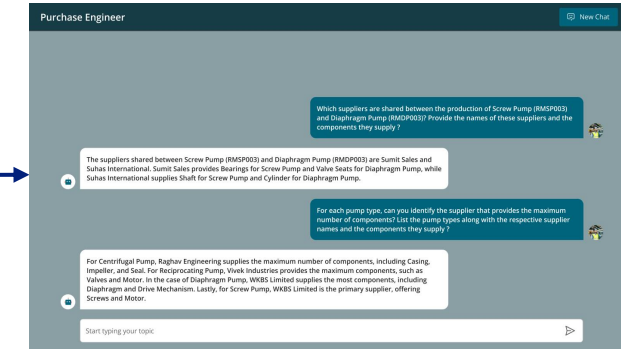
Shipment
Tracking
Reports

Solution Packaging

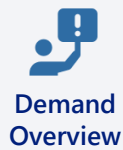
Playbook



Azure
Open AI



Analytics



Demand
Overview



Sales Order
Analysis



Forecast Accuracy
and Bias



Finished
Goods



Forecast vs RM
Availability



Actual Order vs
RM Availability



RM Overview



Supply
Overview



Inventory
Overview



Dispatch
Overview



Purchase
Overview



Procurement
Efficiency



Supplier
Performance



Delivery
Overview



Delivery
Timeliness



Defect &
Rework Insights



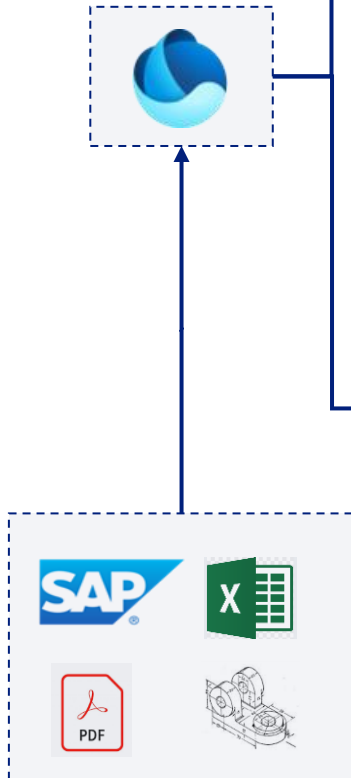
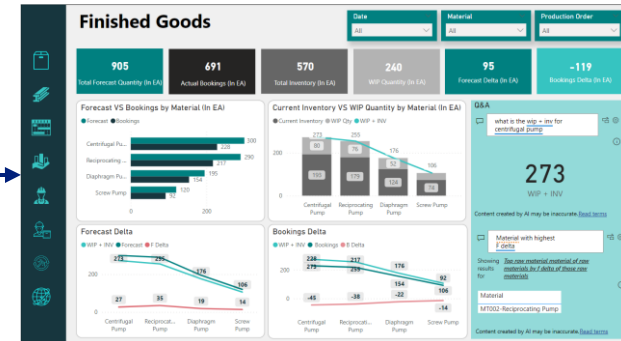
Customer Issue
Analysis



Price
Trend Analysis



Gen AI-
powered
dashboards
with
Q & A Bot



Overview of Solution : Copilot enabled Supply Chain Explorer

Industry Standard Data Models

Preconfigured Dashboards

Persona Configured Gen-AI Industry LLM

	Visualization	Solution	Technology	Values	Timeline	ACR	Implementation Cost	ROI
Supply Chain Explorer Playbook	Web/MS Teams/ Mobile Enabled	Azure Open AI- powered Chatbot for Purchase Engineer and Quality Engineer	Azure OpenAI	<ul style="list-style-type: none"> Quick data retrieval for contract related query Compliance document help for Quality Engineer 	10 -12 weeks			<ul style="list-style-type: none"> 15 to 25 % Increase in Supply chain Efficiency
Supply Chain Explorer Analytics	PBI/Web/ Mobile Enabled	Copilot Enabled Preconfigured Analytics for Supply Chain Management	Fabric Power BI Copilot	<ul style="list-style-type: none"> Forecast vs Actual Booking & Delta visualization Supplier Analysis Procurement Process Visibility Price Trend Analysis 	Assuming readiness as per prerequisites	\$25K - \$30K Per Month	\$95K to \$105K**	<ul style="list-style-type: none"> 10 to 25 % Increase Quality Improvement 15 to 30% improvement Response Time

** Hybrid Delivery Resources **

Analytics Value for Demand Planner

- Demand trend insights
- Sales Order Performance Monitoring
- Bias & Error Identification

KPIs (11)

Forecasted Demand

Actual Demand

Perfect Order Rate %

On Time Delivery %

Bias

Order Fill Rate %

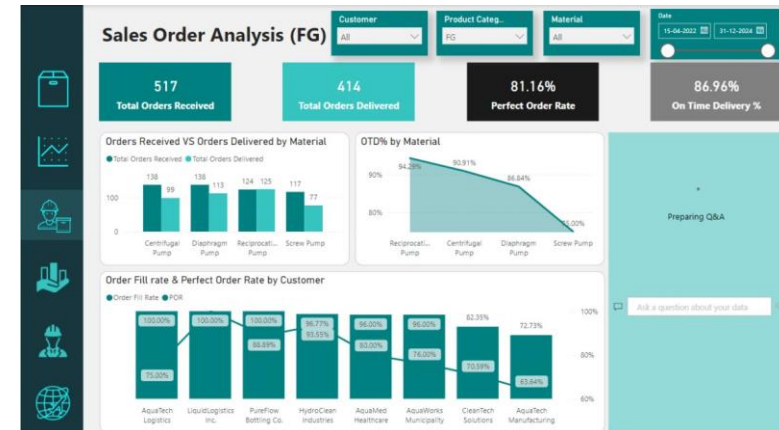
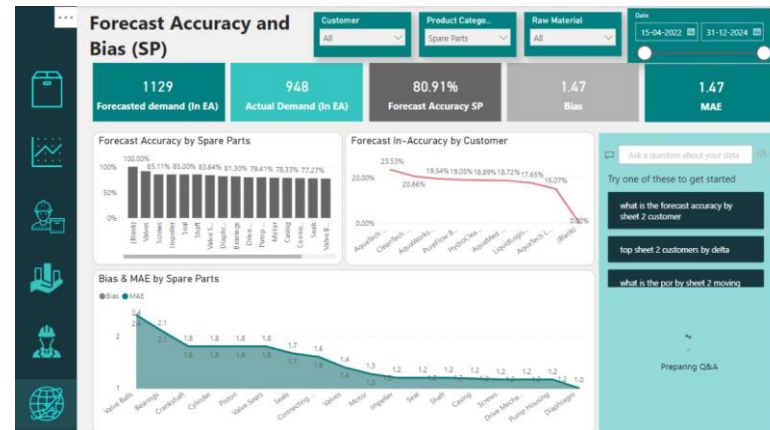
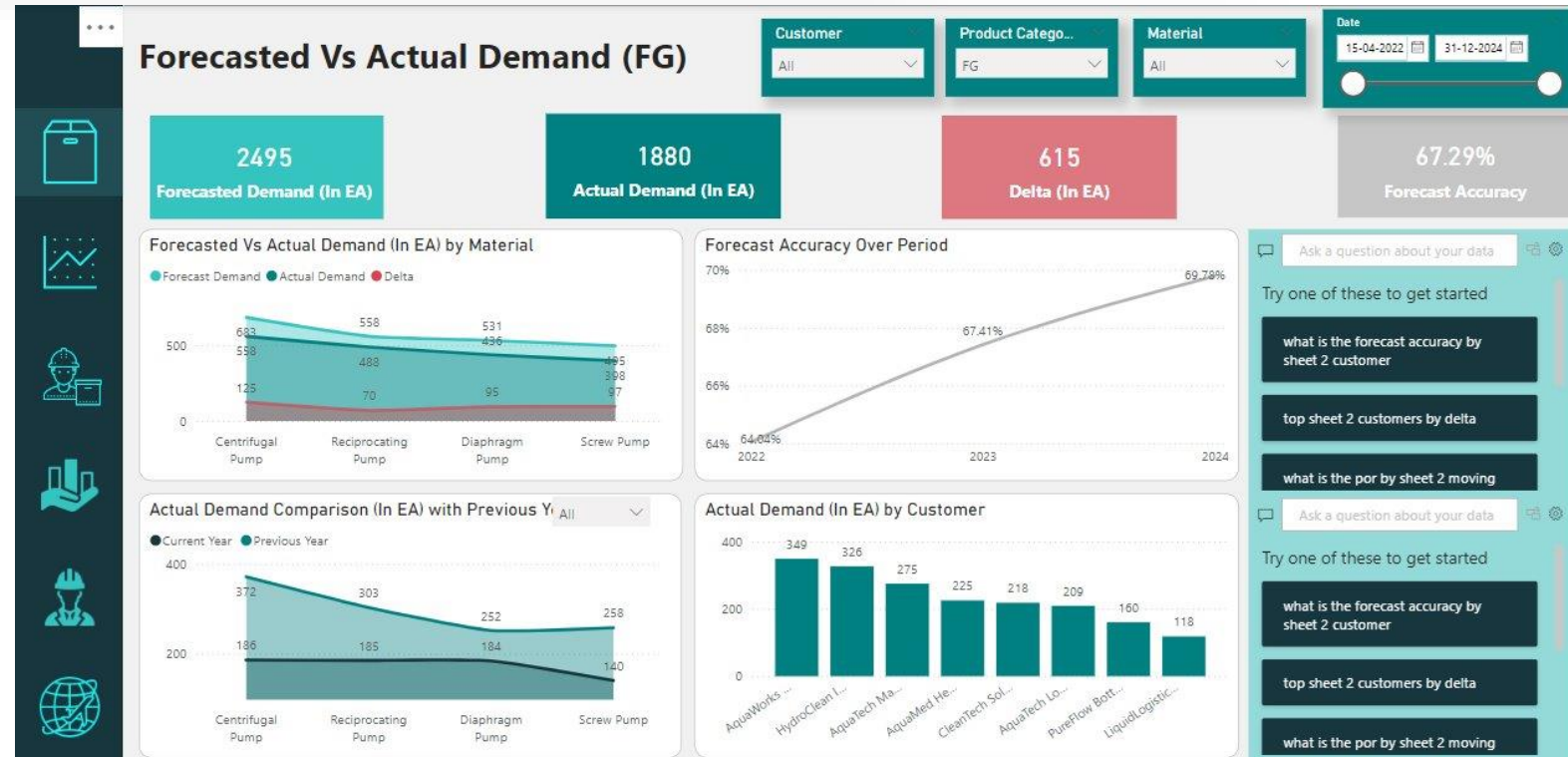
Total Order Received

Forecasted Accuracy %

Total Order Delivered

MAE

Delta

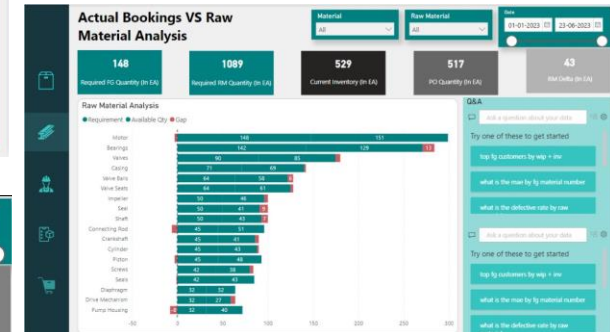
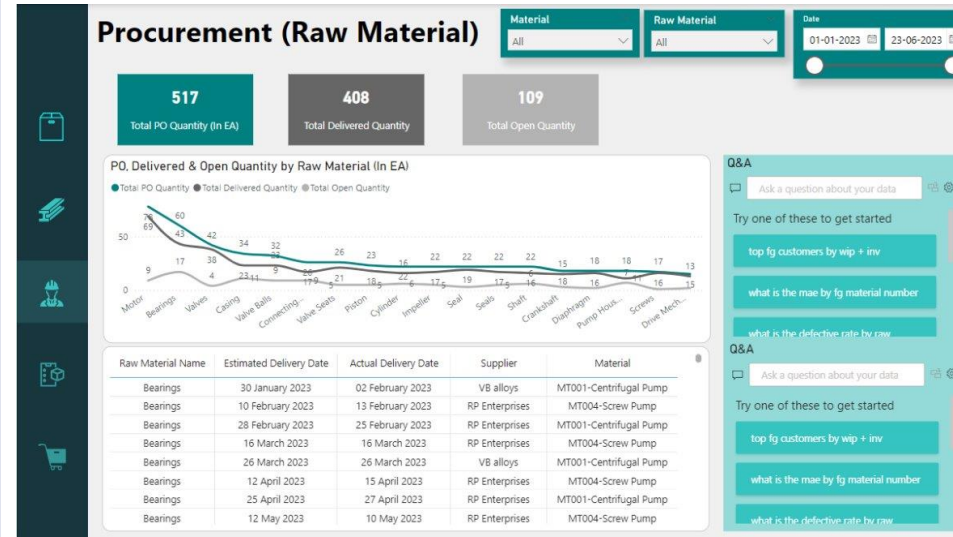


Analytics Value for Supply Planner

- Demand and Supply Alignment
- Proactive Shortage Identification
- Improved Order Fulfillment Rates

KPIs (16)

Forecasted Demand	Actual Demand	Total Inventory	WIP Qty
Booking Delta	Required FG Quantity	Required RM Quantity	RM Inventory
PO Quantity	RM Delta	Total Delivered Qty	Total Open Qty
RM Perfect Order Rate %	RM Lead Time	RM Defect Rate %	RM Reject %



Analytics Value for Purchase Engineer

- Enhanced procurement efficiency,
- Procurement process visibility
- Supplier performance identification
- Cost savings opportunities and price trends

KPIs (13)

Total PR Qty

Total PO Qty

Material
Shortage
Count

OTD %

Defect Rate %

Return %

Total Budget

Total Price

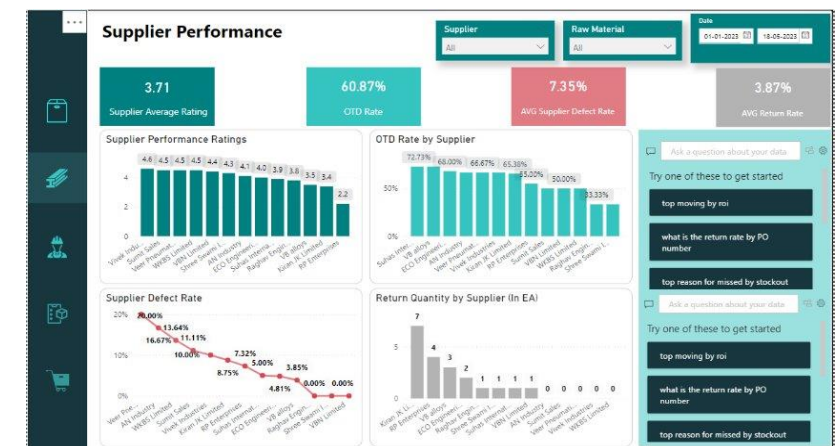
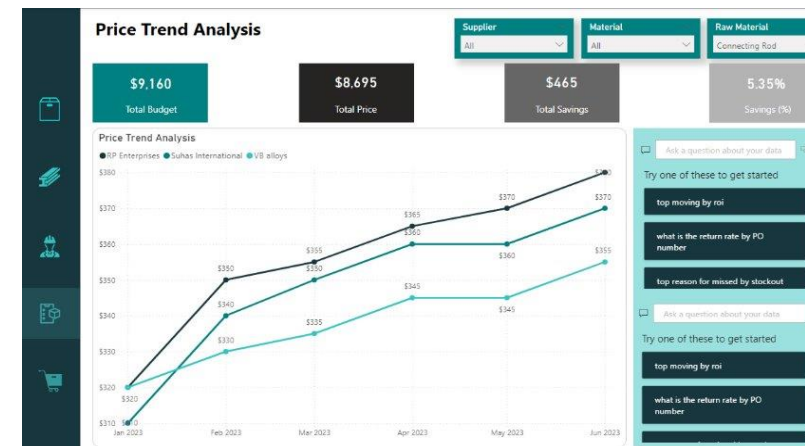
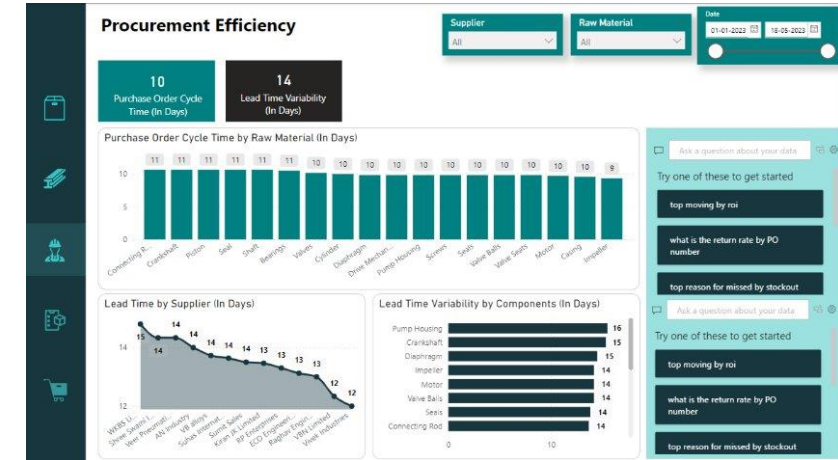
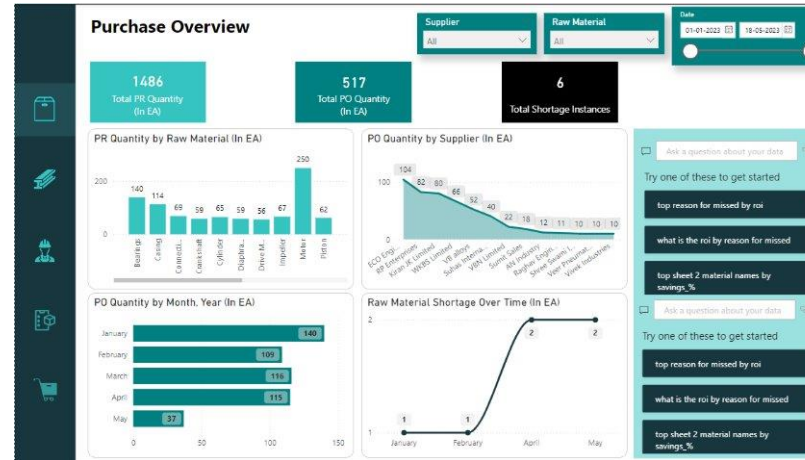
Total Saving

Lead Time RM

Supplier
Rating

PO Cycle Time

Saving %



Playbook Value for Purchase Engineer

- Easy access to supplier contracts and agreements for reference and compliance checks
- Quick retrieval of NDA document information

Documents (600)

Supplier Contracts and Agreements

Purchase Orders

Quality Inspection Documents

Non-Disclosure Agreements (NDAs)

Service Level Agreements (SLAs)



Purchase Engineer New Chat

Which suppliers are shared between the production of Screw Pump (RMSP003) and Diaphragm Pump (RMDP003)? Provide the names of these suppliers and the components they supply ?

The suppliers shared between Screw Pump (RMSP003) and Diaphragm Pump (RMDP003) are Sumit Sales and Suhas International. Sumit Sales provides Bearings for Screw Pump and Valve Seats for Diaphragm Pump, while Suhas International supplies Shaft for Screw Pump and Cylinder for Diaphragm Pump.

For each pump type, can you identify the supplier that provides the maximum number of components? List the pump types along with the respective supplier names and the components they supply ?

For Centrifugal Pump, Raghav Engineering supplies the maximum number of components, including Casing, Impeller, and Seal. For Reciprocating Pump, Vivek Industries provides the maximum components, such as Valves and Motor. In the case of Diaphragm Pump, WKBS Limited supplies the most components, including Diaphragm and Drive Mechanism. Lastly, for Screw Pump, WKBS Limited is the primary supplier, offering Screws and Motor.

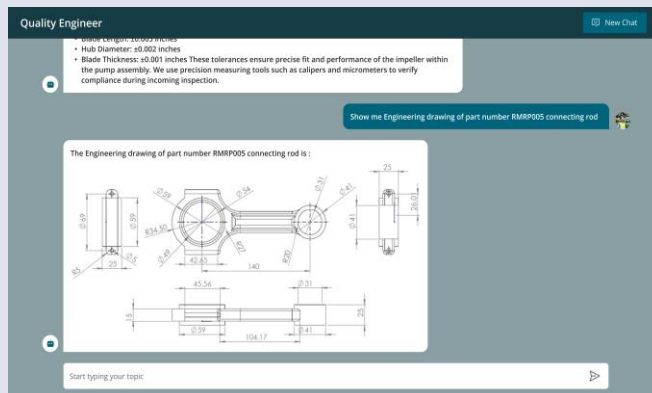
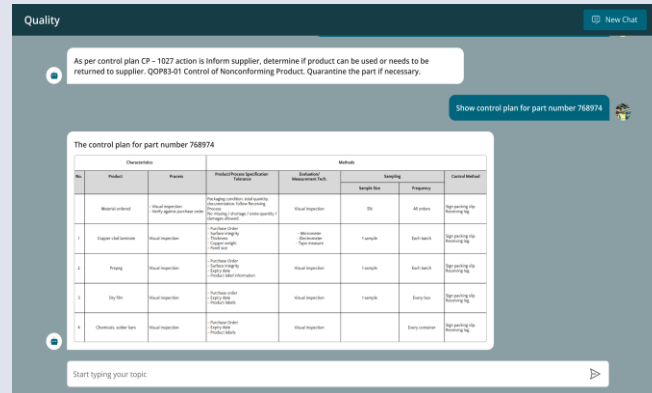
Start typing your topic

- Comprehensive quality management access
- Process validation protocol retrieval

Quality Manual

Inspection and Testing Procedures

Corrective and Preventive Action (CAPA) Plan



- Faster Resolution
- Quality Improvement

Supplier Defect Rate (SDR)

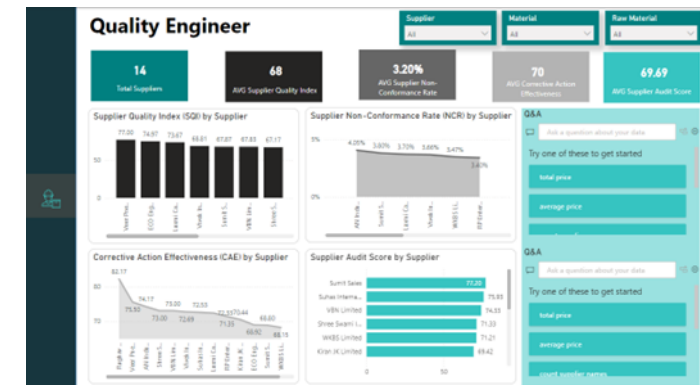
Supplier Non-Conformance Rate
(NCR)

Corrective Action Effectiveness (CAE)

Material Rejection Rate

Supplier Audit Score

Supplier Rating

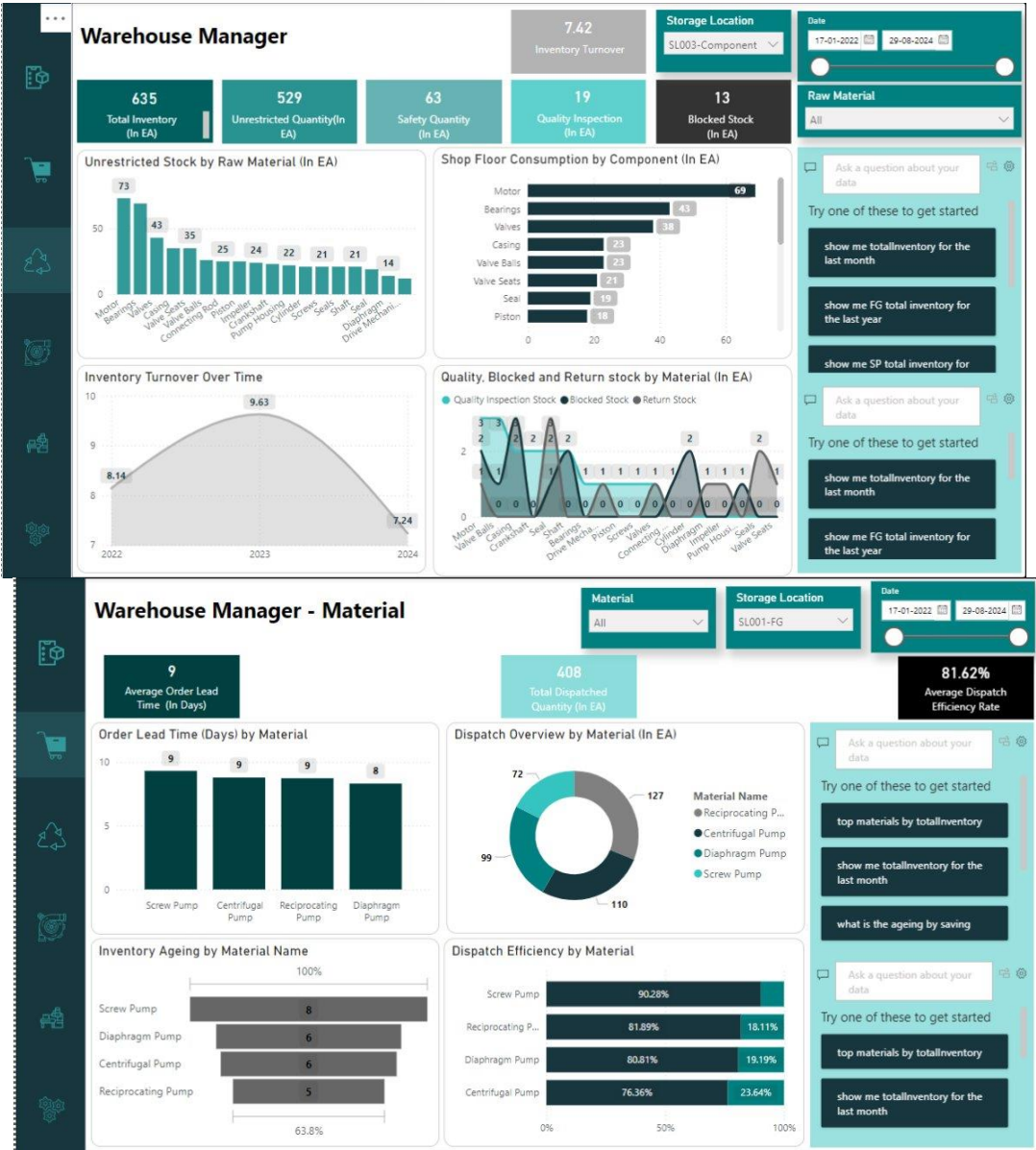


Analytics Value for Warehouse Manager

- Comprehensive Inventory Overview
- Material Consumption Visibility
- Dispatch Performance Visibility
- Aging Inventory Visualization

KPIs (9)

FG Total Inventory	Unrestricted Qty	Safety Stock
Return Qty	Inventory Turnover	Inventory Ageing
Dispatch Efficiency %	Blocked Qty	Dispatch Qty



Analytics Value for Logistic Manager

- Delivery Performance Metrics
- Delivery Mode Insights
- Missed Delivery Analysis

KPIs (6)

Total Planned Deliveries

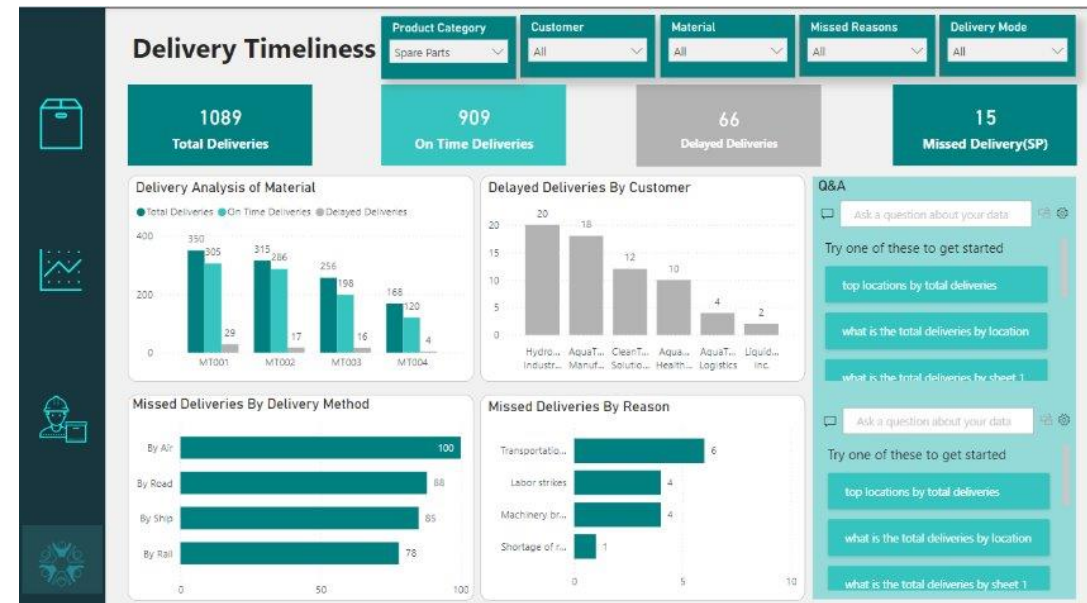
Total Delayed Deliveries

Total Actual Deliveries

Average Delivery Time

Total Missed Deliveries

OTD %



Tables (12)

EKKO
EKPO
BKPF
LFA1
VBAK
MARA
RESB
MSEG
QALS
LIKP
LIPS
AFRU



EKKO

- Total Spend

EKPO

- Spend Forecast
- Supplier Analysis

BKPF

- Spend by category

LFA1

- Supplier type
- Supplier diversity

VBAK

- Demand

MARA

- Raw material costing

RESB

- Consumption

MSEG

- Issue Quantity

QALS

- Defect rate
- Blocked Qty

LIKP

- On time delivery

LIPS

- Delivery Information

AFRU

- WIP

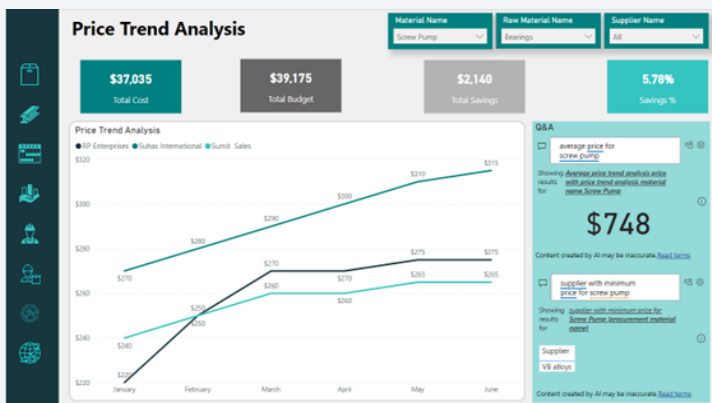
- Assembly time

Data
pipeline



Fabric One
lake

Power BI Dashboard

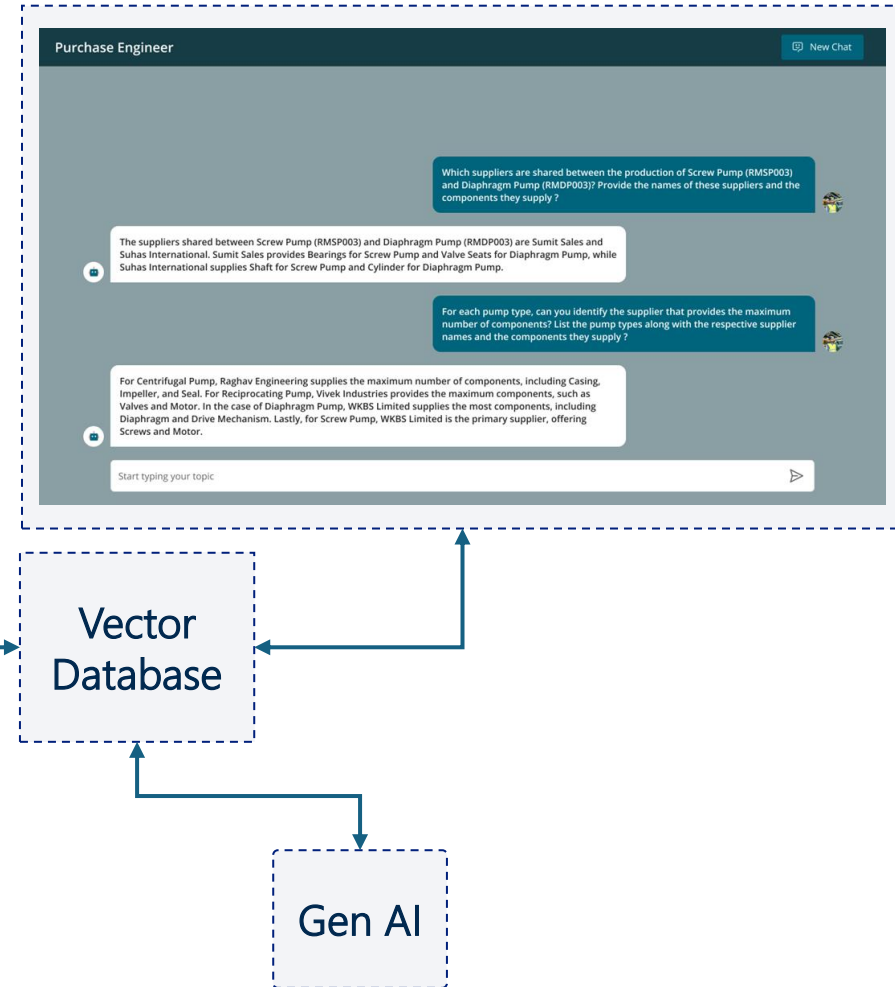


KPIs (52)

Forecast Quantity	Actual Bookings	Total Inventory	WIP Quantity	Forecast Delta	Actual Delta	Unrestricted Stock	Blocked Stock	Quality Inspection Stock	Return Stock
Delivered Vs Open PO Quantity	On Time Delivery	Incoming Material Defect Rate	Planned Vs Issued Raw Material	Assembly Time	Planned Vs Actual Deliveries	Supplier Total Spend	Total Budget And Saving %	Supplier Rating	Price Trend Analysis

Documents

- Supplier Contracts and Agreements
- Purchase Orders
- Quality Inspection Documents
- Material safety data sheet
- Non-Disclosure Agreements (NDAs)
- Service Level Agreements (SLAs)
- Quality Manual
- Quality Control Plan
- Inspection and Testing Procedures
- Non-Conformance Report (NCR)
- Corrective and Preventive Action (CAPA) Plan



**** Solution limits up to 1000 documents from the above samples**



CELEBAL
TECHNOLOGIES

Thank You