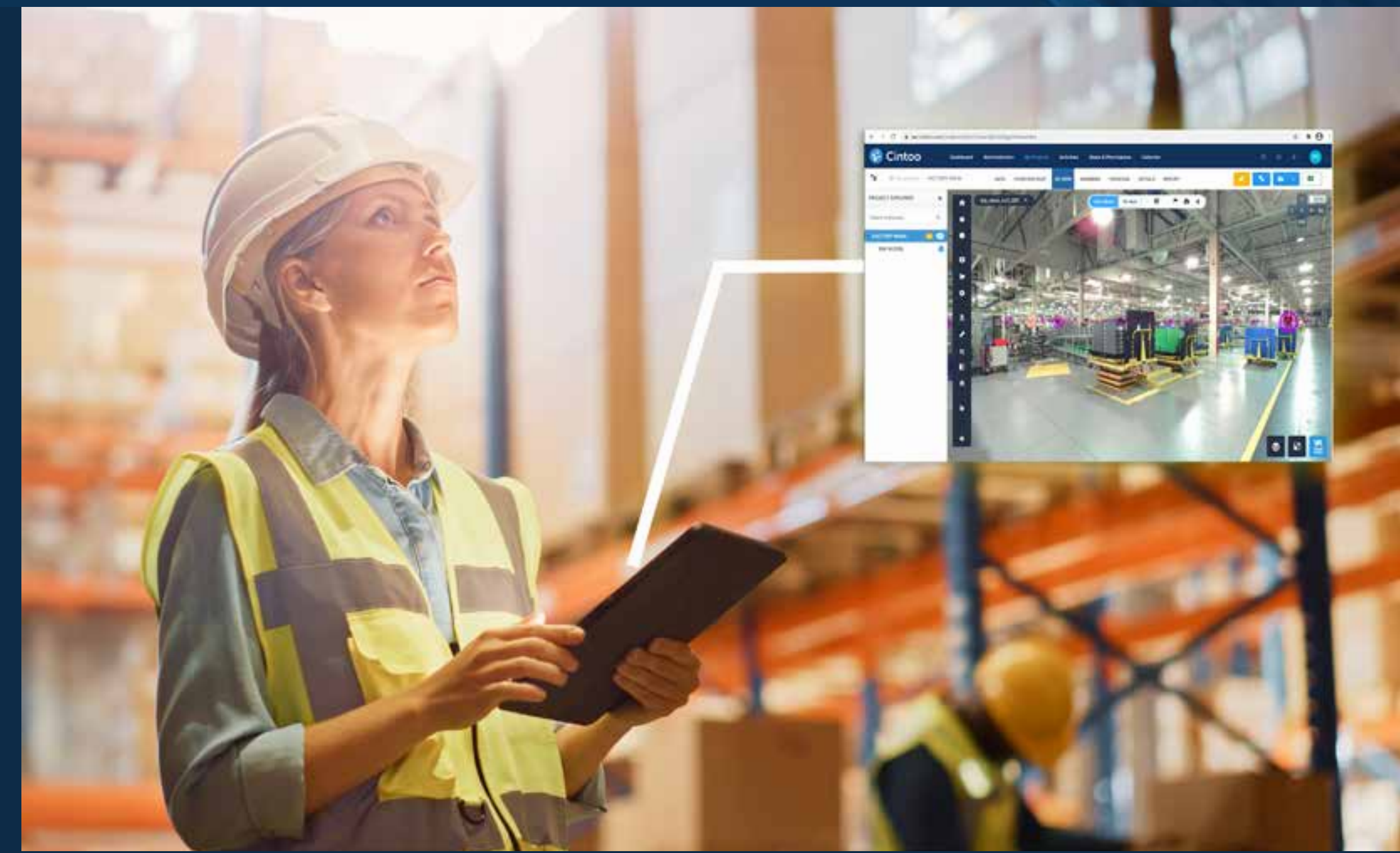




# The Visual Twin Platform

How to leverage Digital Twins and Reality Capture to improve asset management

Start here ►





# Contents

What's in this book:



Digital Twins: a large and fast-growing market



Reality Capture: the crucial foundations



Cintoo: the visual source of trustful information



Cintoo for Digital Twins = Visual Twins



Digital Twin Enhanced Asset Management - AT&D



3 ways to tag your assets



Cintoo Cloud's Visual Twins



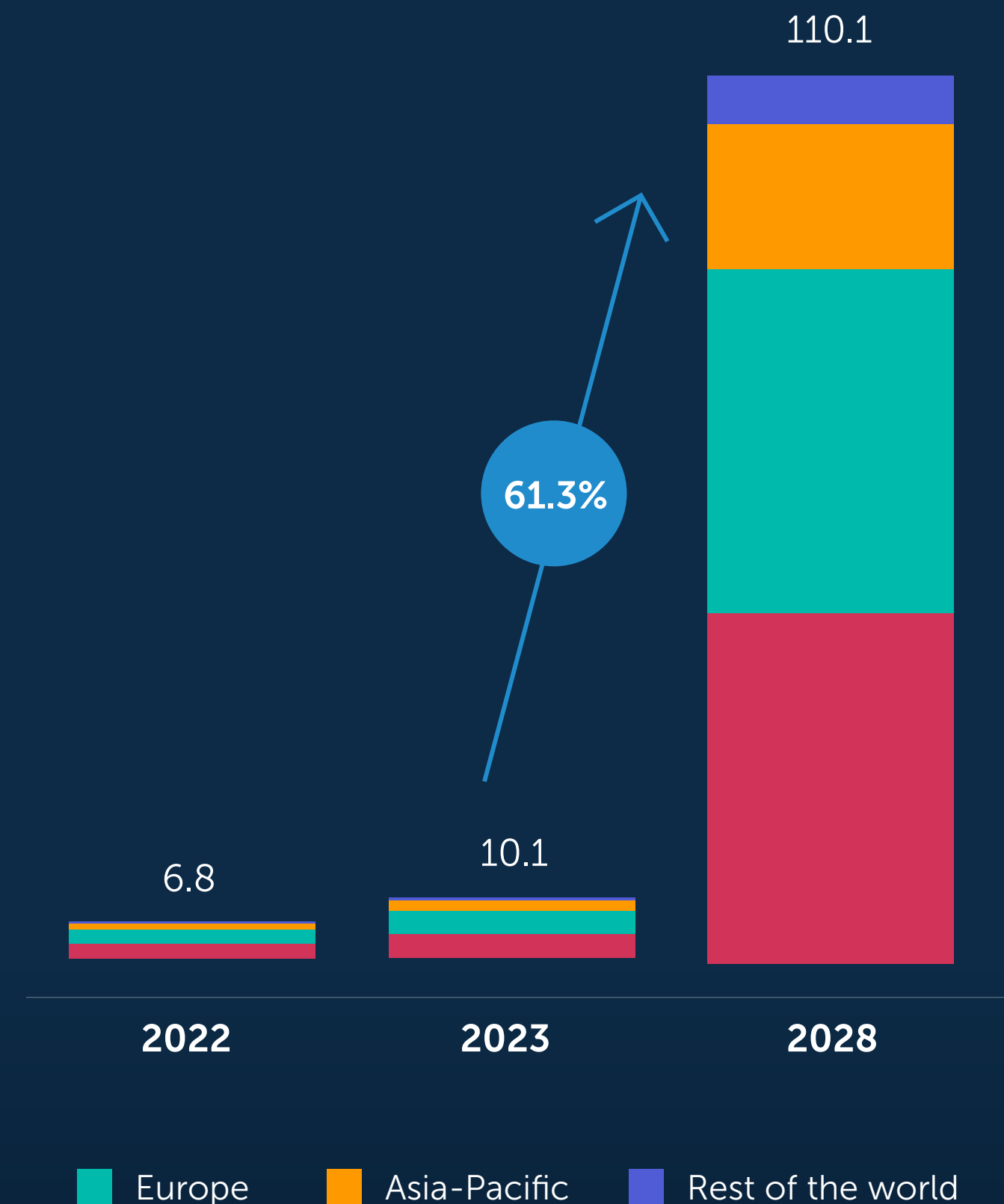
Continue 



# Digital Twins: a large and fast-growing market

The global digital twin market is expected to be worth **\$110.1b by 2028**, growing at a CAGR of **61.3%.\***

Organizations are increasingly relying on digital twins to digitally monitor the physical world in real-time in order to drive efficiencies and reduce costs.



\* Markets and Markets <https://www.marketsandmarkets.com/Market-Reports/digital-twin-market-225269522.html>

# Reality Capture: the crucial foundations

Reality Capture technologies, such as 3D laser scanning, provide a crucial foundational layer for capturing spaces and objects that make up Digital Twins.

Modern 3D scanners (terrestrial or mobile), or drones, can now acquire up to hundreds of millions of data points (point clouds) in a single capture, providing data-rich 3D point clouds of every object in the scanner's view.

But these large point cloud files are challenging to view and utilize. Cintoo Cloud converts these to Mesh based files at the same resolution as the original scans for easy uploading, viewing and management.



Point Cloud



3D Mesh

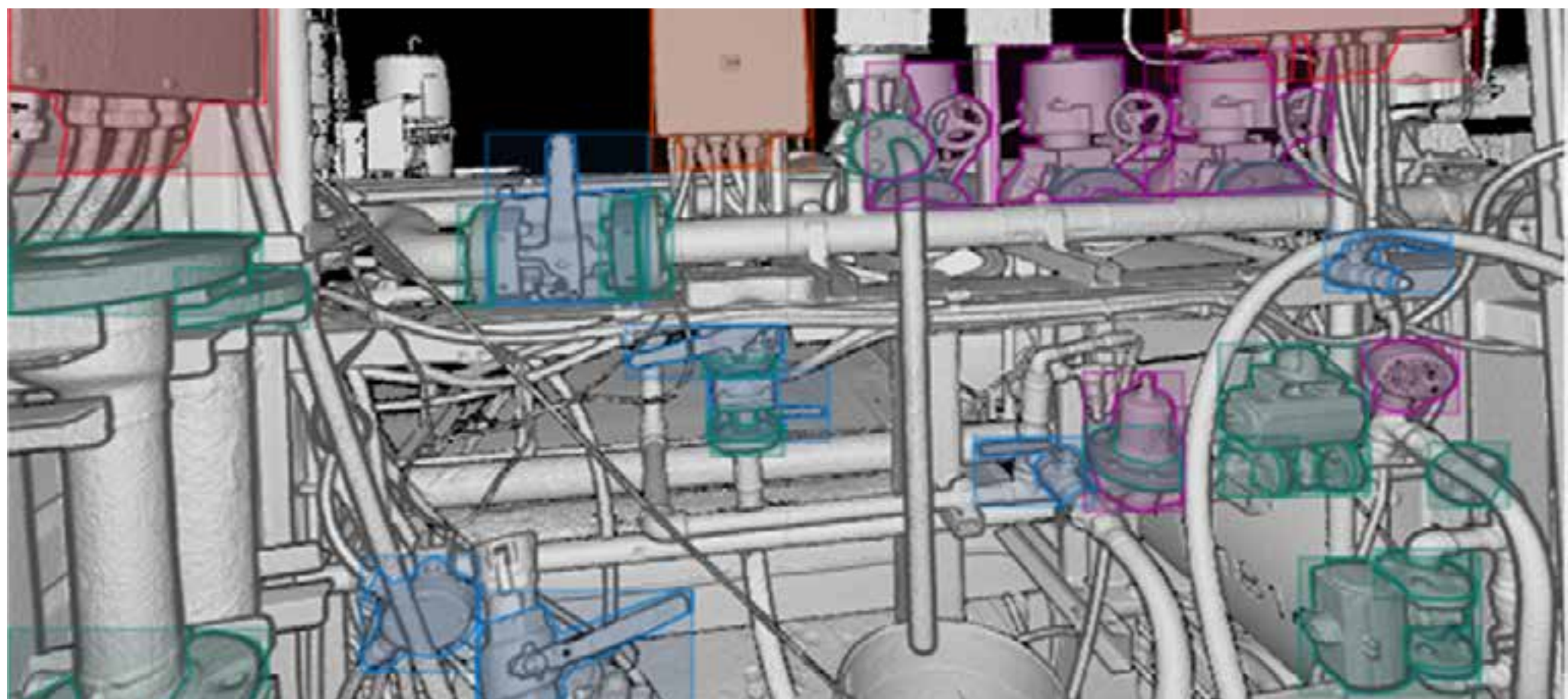
> Effective asset management is vital for businesses across:

- Pharmaceutical
- Oil & gas
- Automotive
- Energy
- Food and beverage
- Water treatment
- Utilities
- Shipbuilding



# Cintoo: the visual source of trustful information for accessing your Digital Twin Reality Data

An optimized Digital Twin includes Reality Data that includes capturing all of the applicable assets into a digital “blueprint”. Unlike out-of-date BIM and CAD models these digital assets are a single visual source of trustful information that accurately represents the current reality.



## DIGITAL TWIN + REALITY CAPTURE = VISUAL TWIN

You could say that Cintoo Cloud provides asset managers with Visual Twins!

The visibility, clarity and understanding that asset managers need to effectively improve their asset management workflows.

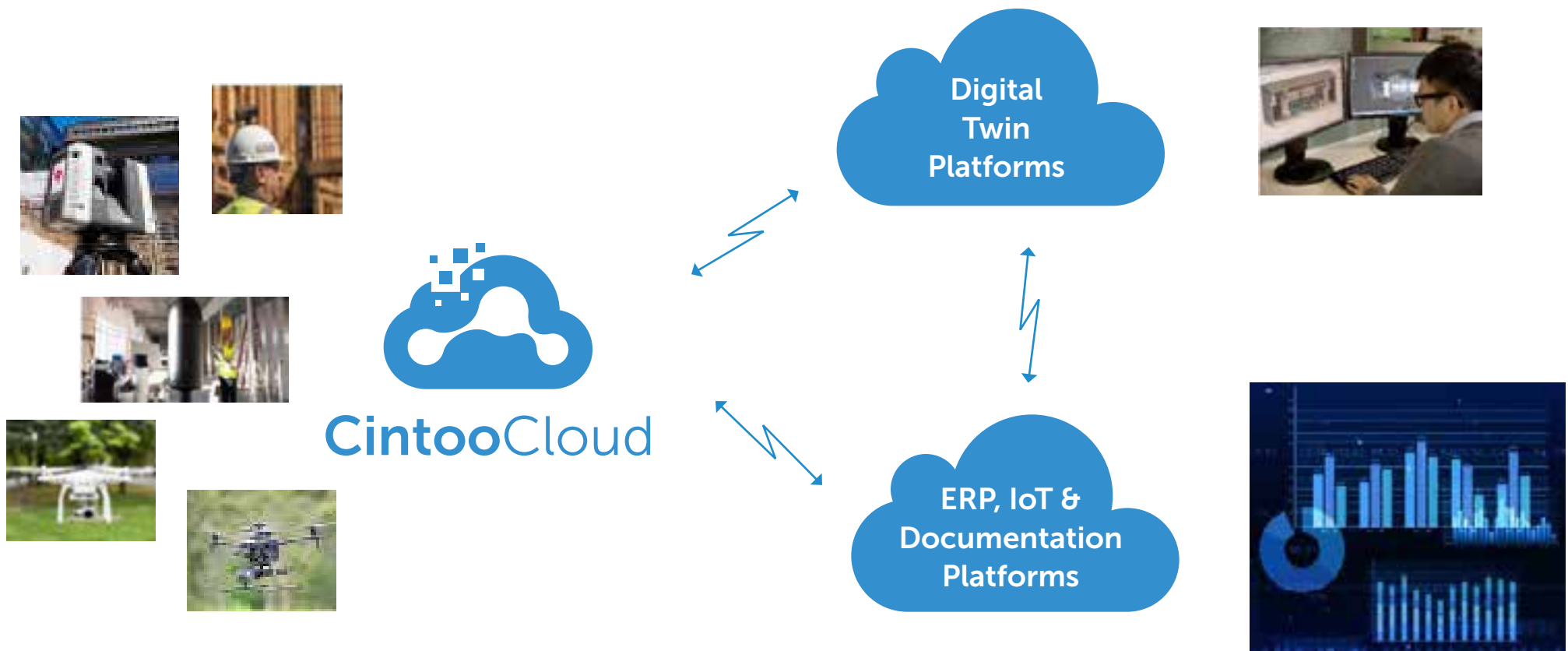


# Cintoo for Digital Twins = Visual Twins

In addition, Cintoo Cloud not only enables users to easily upload reality capture data from multiple sources, including terrestrial scanners, mobiles or drones, but also allows many other data types such as 1D, 2D, 3D and live sensor data.

Bring your scanned as-built data into cloud-based, collaborative workflows and use this single source of trustful information for asset management and predictive maintenance.

## Cintoo Cloud: The ultimate source of trust for asset management eco-systems



Cintoo Cloud is also used as a source of accurate information for:

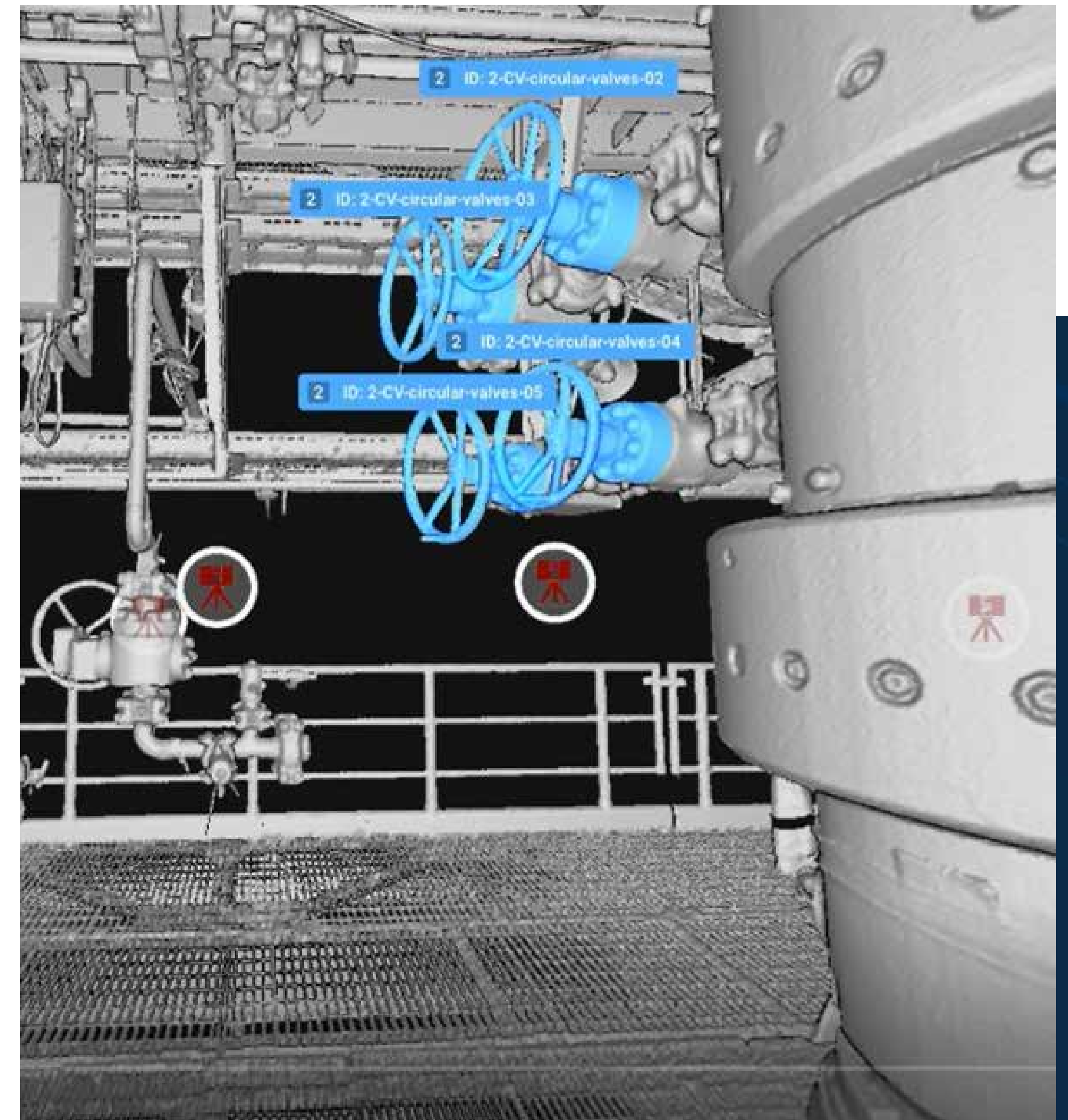
- Engineering
- Progress & quality checks
- 3D simulation & metaverse experiences
- Remote or in-field operation

# Digital Twin Enhanced Asset Management - AT&D

The key element for effective asset management is tagging your equipment in your Digital Twins. Users can then connect tagged equipment to other platforms for easy access to all related information.

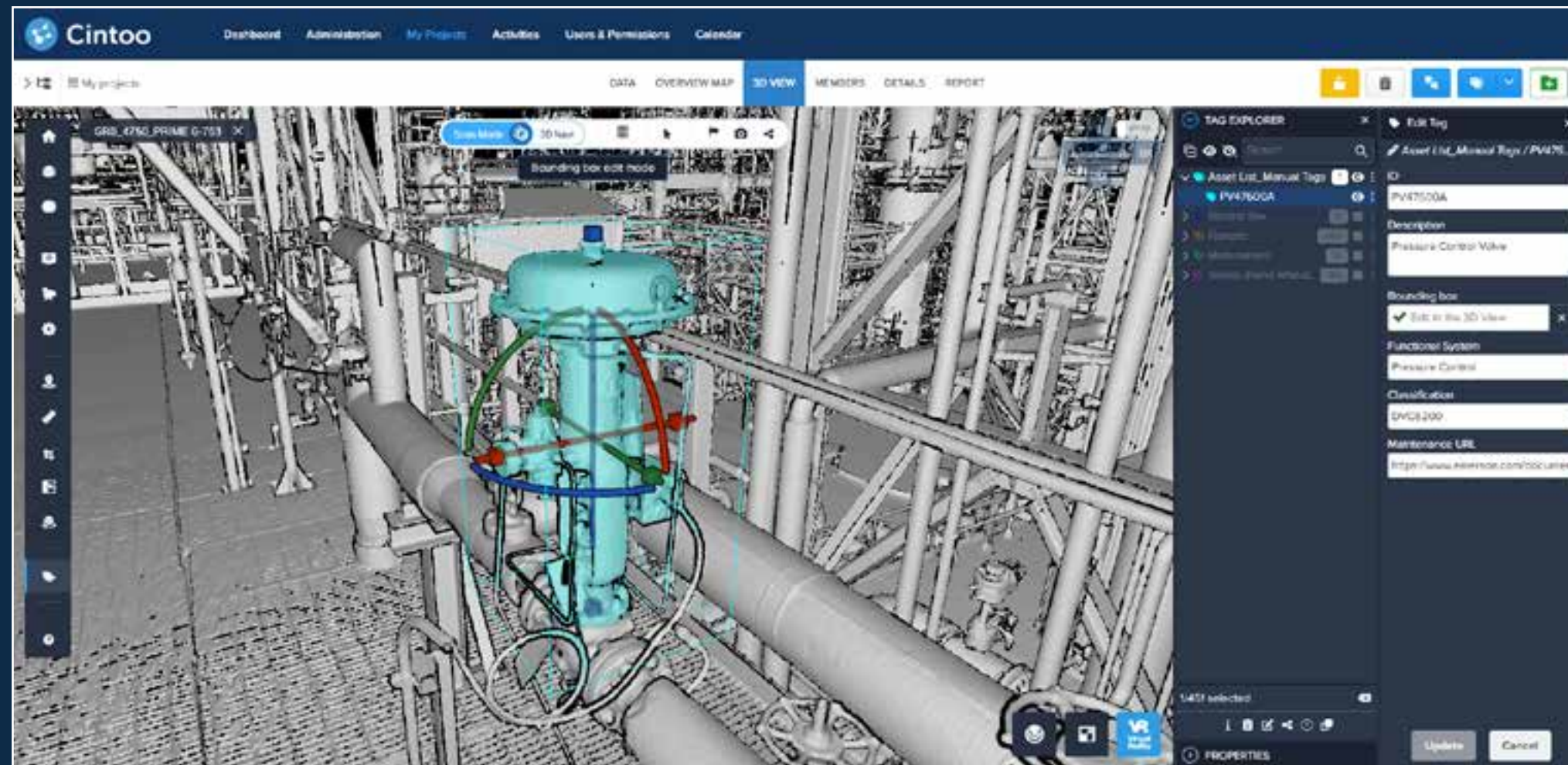
A new feature in Cintoo Cloud is Asset Tagging and Display (AT&D). Cintoo asset tags reference your selected objects with a bounding box and unique ID. It provides a list of your assets that can be easily searched and located.

- Tags can be cropped & exported in 3D.
- Tags can be seen from one or more scan views.
- Tags can include user-defined metadata (hyperlinks to other platforms, category, description...).
- Tags can be exported with scan views to Digital Twin / 1D / 2D / ERP / EAM platforms



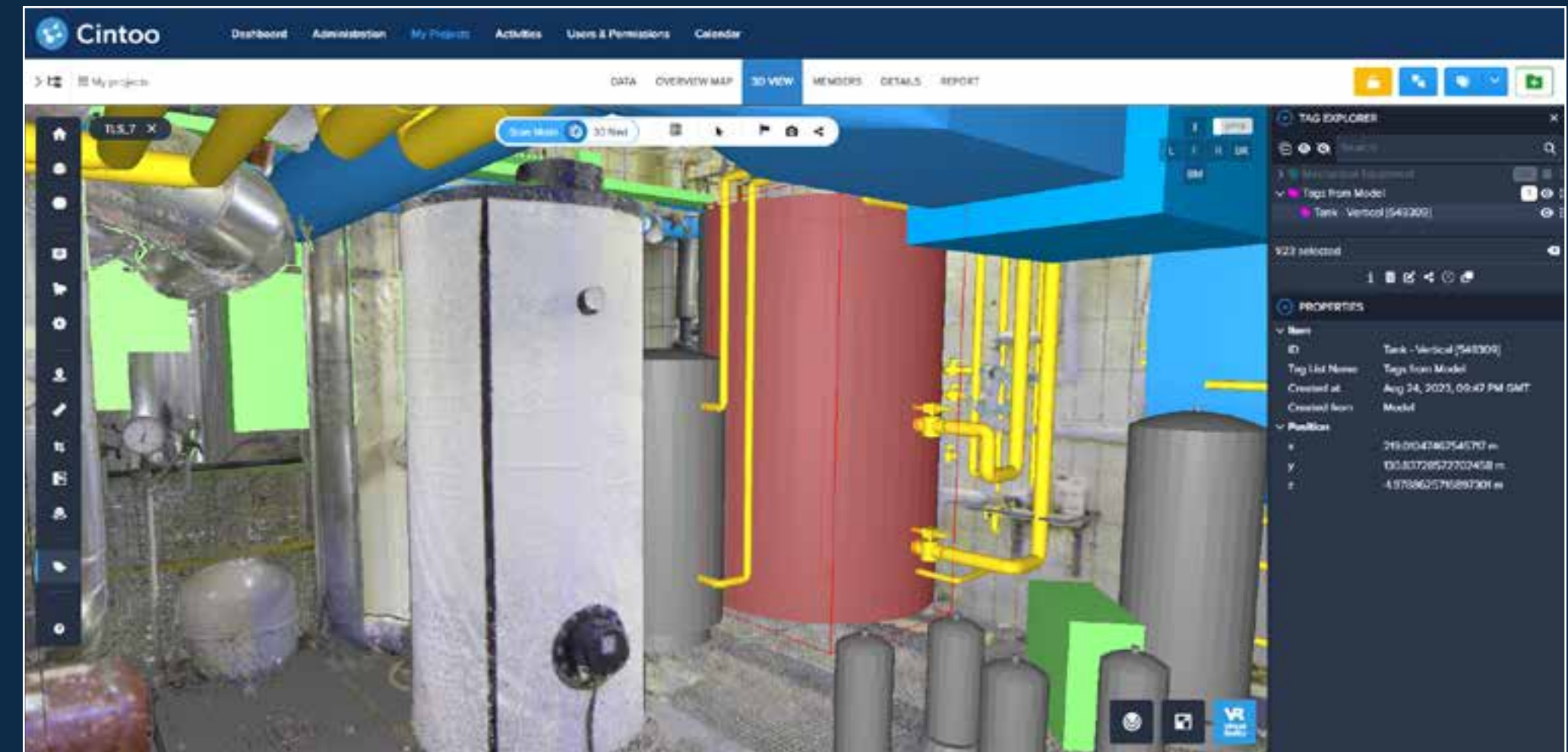


# Three ways to tag your assets in Cintoo Cloud



1.

Manual tagging in Cintoo Cloud



2.

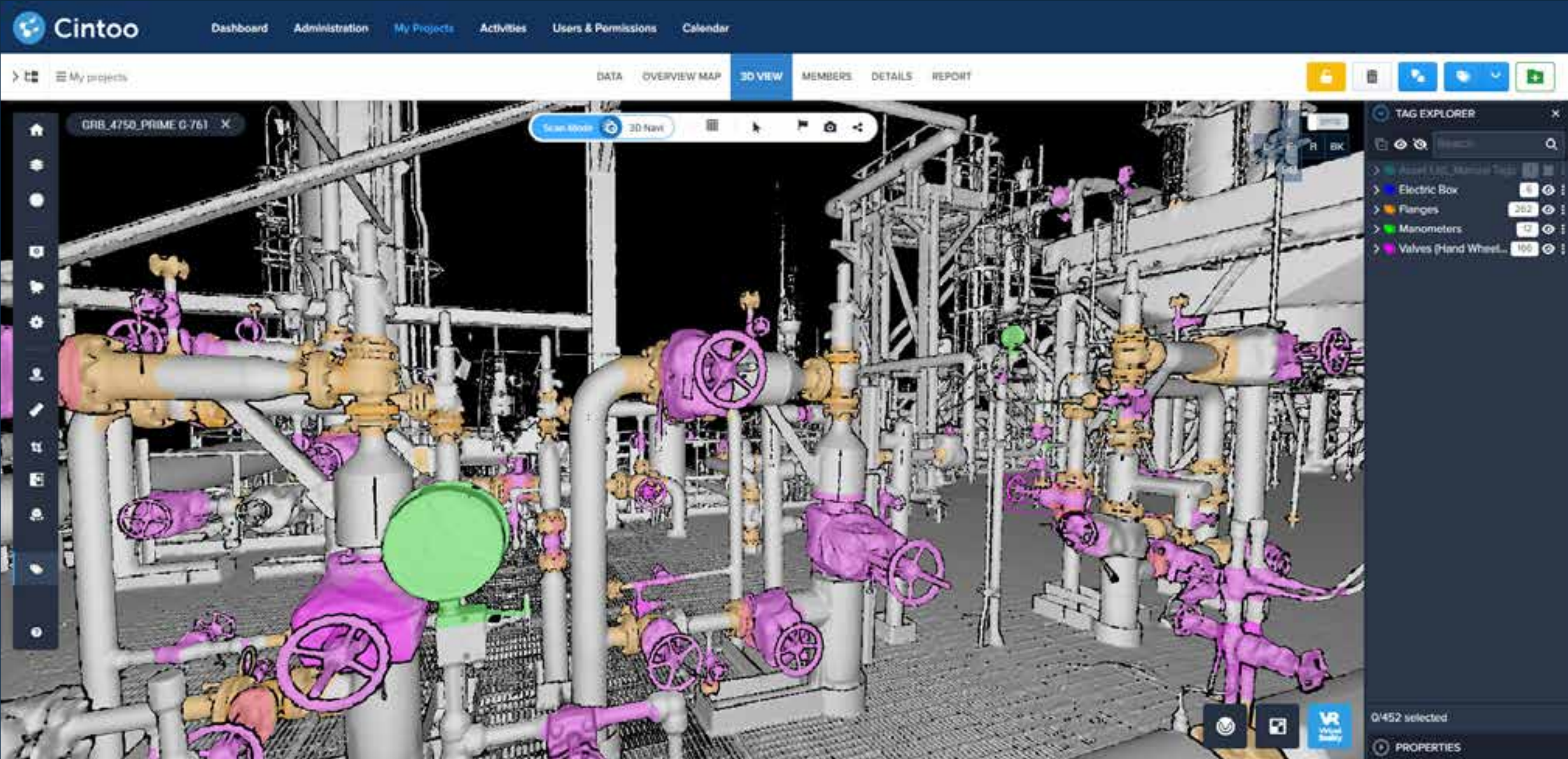
Import asset lists from CAD/Digital Twin platforms

Continued →



3 ways to tag your assets (continued)

3.  
Automatically detect assets using  
Cintoo's AI engine



The use of the surface in the AI engine allows the detection of objects that are not easily visible in RGB panoramic images due to illumination conditions.



# Cintoo Cloud's Visual Twins

## With Cintoo Cloud, organizations can:

- Accurately classify and localize Reality Capture data of their assets, including monitoring in real-time, identifying issues before they result in downtime
- Glean full visibility of all assets to base decision-making on trustful data to optimize outcomes
- Validate that the model or twin is accurate, and therefore reliable, or not. Help improve safety by monitoring equipment and alerting personnel to potential safety hazards
- Experts and non-experts can use Cintoo anywhere at any time with other Digital Twin platforms to optimize effectiveness
- Increase the organization's efficiency, effectiveness and safety as well as reducing rework and downtime to maximize return on Digital Twin and Reality Capture investments
- Identify and track inventory items as they move throughout the site, reducing the risk of lost or misplaced items

Using AI to automatically geolocate and classify your tags is just the beginning!

Other applications of AI technology in Digital Twin asset management include:

- Asset identification
- Predictive maintenance
- Inventory management
- Safety monitoring
- Quality control

[Request a demo](#)





Learn more today...

See it now! ▶

Or email us now... [sales@cintoo.com](mailto:sales@cintoo.com)

[Home](#)

[Digital Twins: a large and fast-growing market](#)

[Reality Capture: the crucial foundations](#)

[Cintoo: the ultimate data source](#)

[Cintoo For Digital Twins = Visual Twins](#)

[Digital Twin Enhanced Asset Management - AT&D](#)

[3 ways to tag your assets](#)

[Cintoo Cloud's Visual Twins](#)

[Contact Us](#)

