



Cisco **Smart Workspaces**

The way we work has changed.
It's time the **workplace** should too.

Safety

68%

of employees do not feel completely **safe** working in their employer's buildings (Honeywell, Jan 2021).

85% of employees would like to know the **air quality** in the building they work in, even after the pandemic ends (Cohesion Nov 2021)

Experience

96%

of employees indicate they **need intelligent workplace technology** to improve work environments and experience. (Dimension Research, 2020)

Productivity

23%

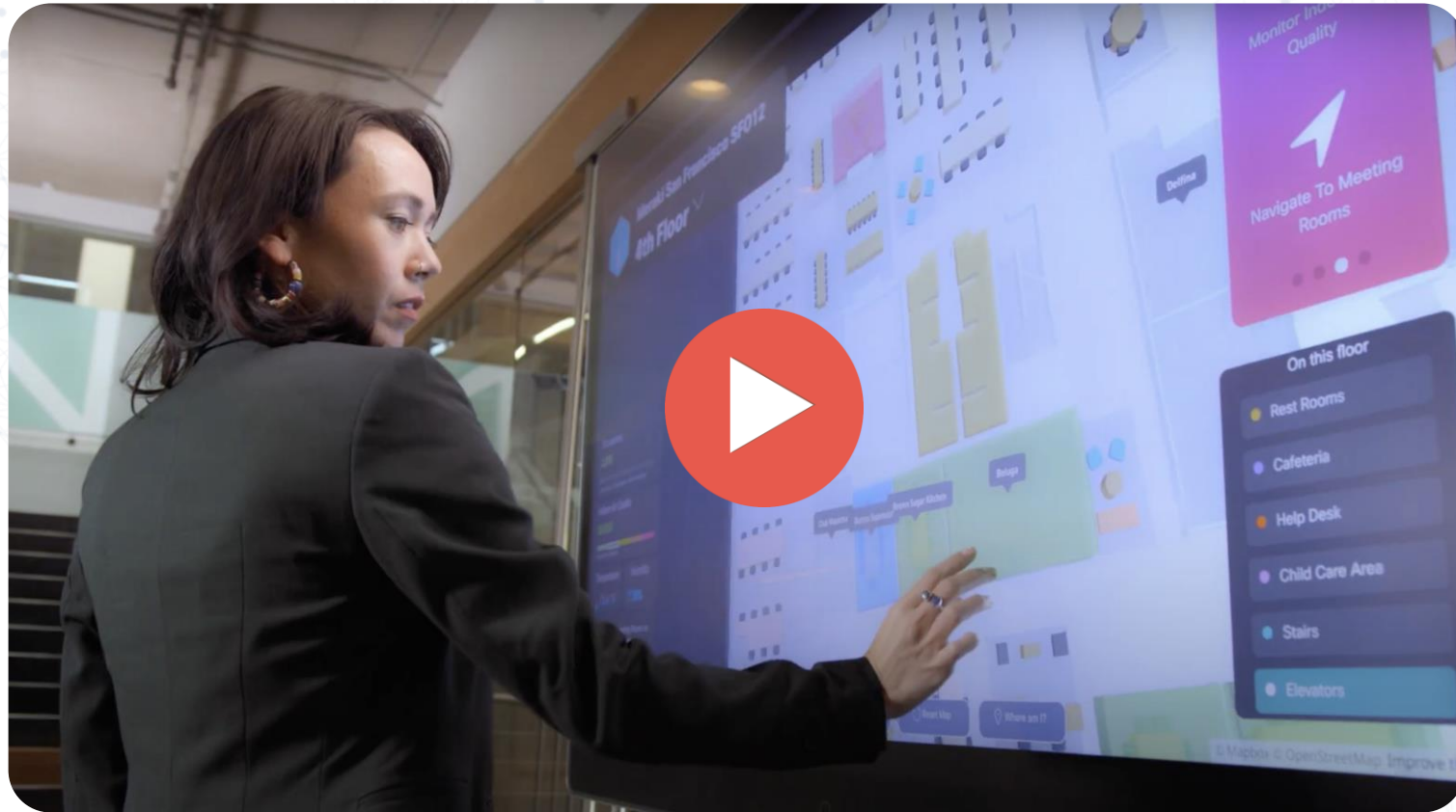
of employees have access to meeting rooms when they need them. Meanwhile, meeting room utilization is only around 30%. (HOK's Consulting group)

Introducing Cisco Smart Workspaces

Workspaces Reimagined. For the Hybrid World.



Watch Video



<https://youtu.be/62IYSskhNCl>

Smart Workspaces: Bringing Network & Experiences Together



Catalyst Access Points
Catalyst Switching *



Meraki Access Points



Meraki Things *



Meraki Video *

Webex Devices



Powerful **Cisco Infrastructure**



DNA Spaces
Rich Maps

Third Party Sensors
Wireless & Wired *



Cisco DNA Spaces

Drive Outcomes

- Safe, Healthy Buildings
- Employee Experience
- Employee Productivity
- Space Utilization

Who is this for?



Hybrid Worker

Safety: Real-time Occupancy & Air Quality

Productivity: Visualize Meeting Room & Desk Availability

Experience: Contextual Awareness



IT & Facilities Teams

Understand Space Utilization

Real Time Occupancy & Capacity Management

Monitoring and Alerts

What does it do?



Employee Experience

Transform static floor maps into interactive, dynamic 3D maps for contextual employee experiences.



Employee Safety

Real-time occupancy & air quality updates and alerts to create safe, spaces and support employee wellbeing



Productivity

Visualize live meeting room and desk availability. View booking info, workplace environment. Hold empty meeting rooms.



Space Utilization

Know how space is being used and make informed decisions to improve utilization & optimize real-estate.



Smart Workspaces Business Impact

Real estate Costs: **\$50.00** per square foot/ year

Cisco infrastructure cost: **\$1.00** per square foot / year
Wireless 0.25, Switching 0.50, Collab 0.25

Total Benefits
for \$1 investment **\$9.00** per square foot / year (for two use cases)

Workspace optimization:

About 42% of commercial office space sits underutilized (JLL)

5% improvement in space utilization can result in cost savings of **\$2.5 sq.ft/ year**

Employee productivity :

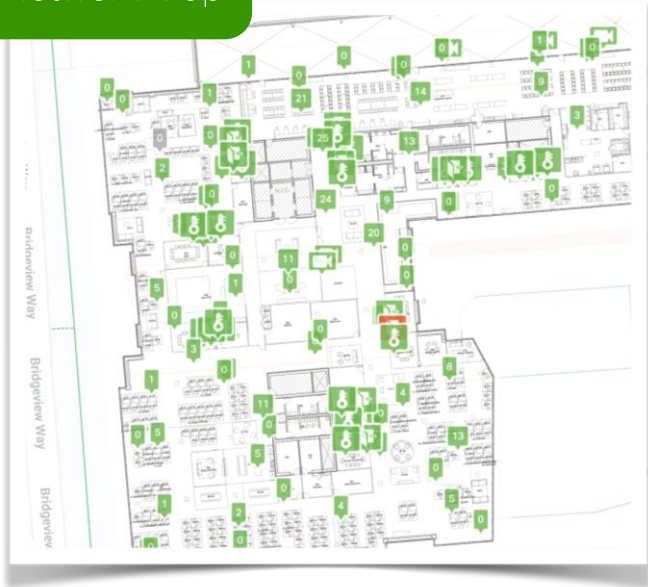
40% employees spend 1hr/ week trying to find conference rooms, resulting in loss in productivity.

50% reduction in search time, would result in cost savings of about **\$6/ sq ft/ year**

Building Rich Maps

How can we transform flat floor plans into dynamic, interactive & highly intuitive, rich maps?

Network Map



Facility Map

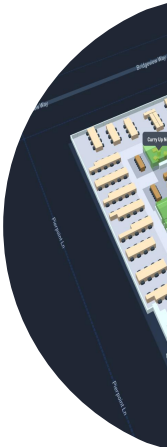


Mapping Engine

Intelligently deconstructs facility maps and extracts data such as meeting rooms, desks, and amenities using AI/ ML and transforms them into interactive, rich maps.

- Network maps are infrastructure centric and static. Not usable for business outcomes.

- Facilities Maps are built for building management and not suitable for consumer experiences.



Interactive Rich Maps

That provide contextual awareness, safety, indoor navigation, room finding and more.



Cisco **Smart Workspaces**

User Journey



Meet Paul

Product Manager, Hybrid Worker

Employee Safety



Meet Paul

Hybrid Worker

Paul is a Hybrid worker, visiting the office. Let's follow his journey in a 'Cisco Smart Workspace'. As he enters, he is greeted by a digital signage at the lobby that reassures him that the building is safe to enter.

He gets insight into:

- Real-time building occupancy
- Building Indoor air quality
- Occupancy levels in floors



Employee Experience

As Paul walks into Floor 4, he sees an interactive Webex Board with a 3D map of the floor. This provides contextual awareness and in a single glance, Paul is able to find conference rooms, desks, book or hold unoccupied meeting rooms and find his way around the campus

Meraki San Francisco SF012
4th Floor

Occupancy
LOW

Indoor Air Quality
GOOD

Temperature 71.6 °F
Humidity 34%

21 Meeting Rooms on this floor
13 Available, 2 Occupied, 6 On Hold

This map is interactive
Pan, Zoom In & Out On The Map
Tap On Places To See More

On this floor
Rest Rooms
Cafeteria
Help Desk
Child Care Area
Stairs
Elevators



Employee Productivity

Paul has a meeting coming up. He selects a meeting room 'Anchor Steam' on the map and sees more information about the room – availability, capacity, air quality, temperature, noise level, etc. Paul decides to Hold the room until he walks over. The room's status changes to 'On Hold' on the map (Blue). He can book the room using the navigator outside the room. After he enters the room, it turns Occupied.



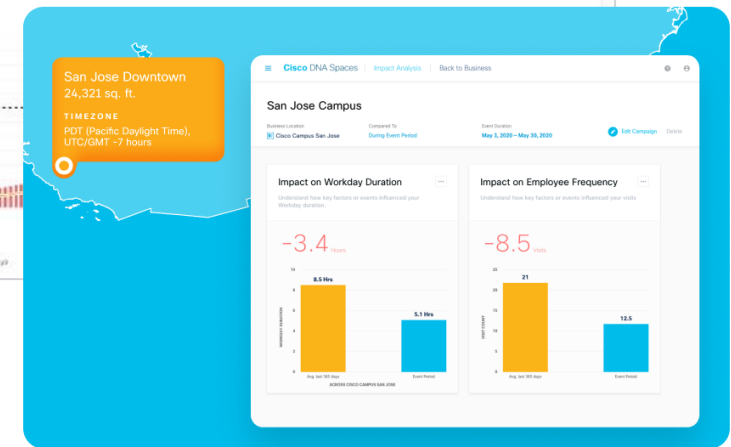
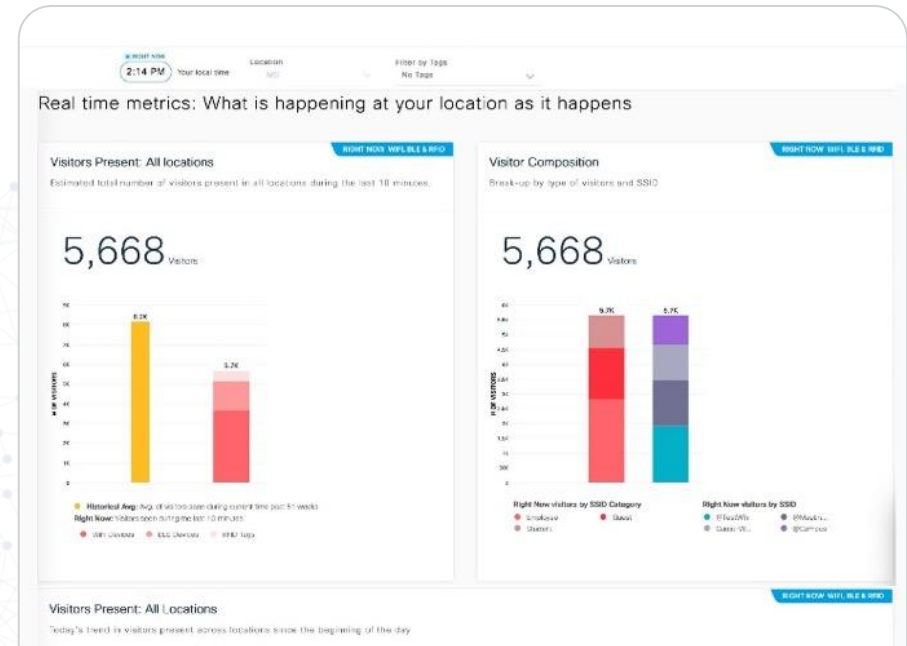
Gary's Journey

Space Utilization



Gary has a host of apps available at his disposal on the DNA Spaces dashboard that gives his team analytics on employee behavior and space utilization :

- **Right Now App** for real-time occupancy monitoring & alerts
- **Impact Analysis App** to measure the impact of at-location events
- **Behavior Metrics App** to identify patterns in behavior





Cisco DNA Spaces

For more information on Cisco Smart
Workspaces, visit our webpage

[Learn more](#)

