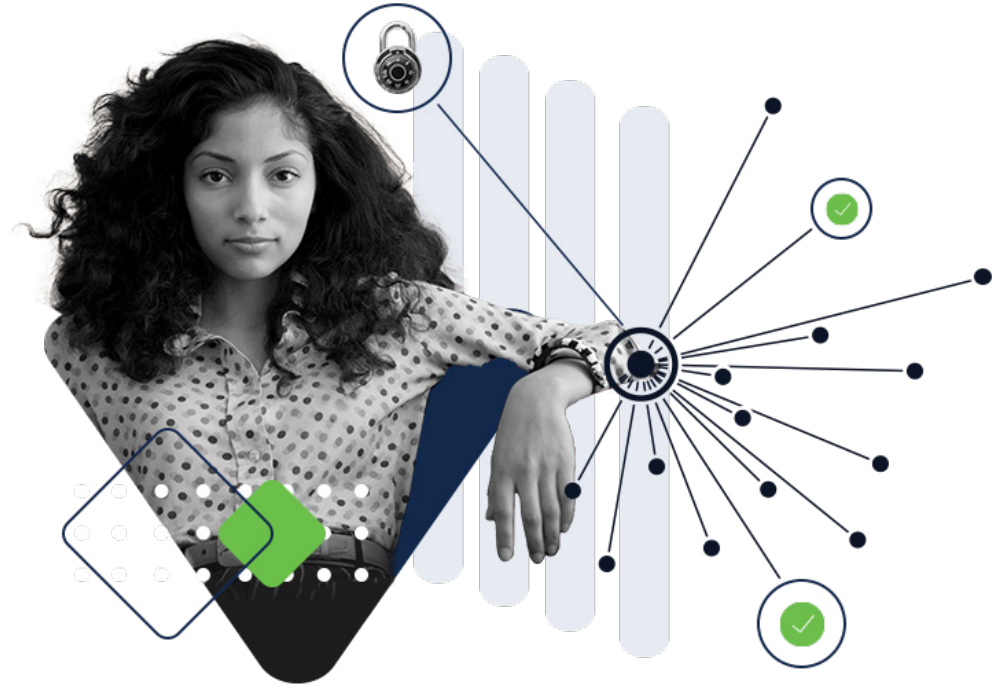


Cisco Umbrella Package Comparison

Cisco Umbrella secures internet access and controls cloud app usage from your network, branch offices, and roaming users. Unlike disparate security tools, Umbrella unifies secure web gateway, cloud access security broker, DNS-layer security, cloud-delivered firewall, data loss prevention, malware protection with sandboxing, and remote browser isolation functionality into a single cloud service. Umbrella acts as a secure on-ramp to the internet and delivers deep inspection and control to support compliance and provide effective threat protection. Backed by Cisco Talos, one of the largest threat intelligence teams in the world, Umbrella exposes threats for better investigation and response. By delivering all this from the cloud, Umbrella offers visibility and enforcement to protect users anywhere.



	DNS Essentials	DNS Advantage	SIG Essentials	SIG Advantage
	Block threats at the DNS layer across your enterprise in minutes without added latency	Get DNS protection plus additional web security and threat insights to speed up investigations	Deploy advanced security functions and simplify management with the most effective security in the industry	Unlock the highest levels of protection and control with advanced security functions like layer 7 firewall with IPS, DLP, and more
Licencing	By # of covered users	By # of covered users	By # of covered users	By # of covered users

Security & Controls

DNS-layer security

Block domains for malware, phishing, botnet, and other high risk	●	●	●	●
Block domains from Cisco SecureX, direct integrations (Splunk, Anomali, & others) and custom lists using enforcement API	●	●	●	●

Secure web gateway (SWG)

Proxy web traffic for inspection		Traffic associated with risky domains via selective proxy	All web traffic	All web traffic
Decrypt and inspect SSL (HTTPS) traffic		With selective proxy	●	●
Enable web filtering	By domain or domain category	By domain or domain category	By domain, URL, or category	By domain, URL, or category
Create custom block/allow lists	Of domains	Of domains	Of URLs	Of URLs
Block URLs based on Cisco Talos and other feeds; block files based on AV Engine and malware defense		With selective proxy	●	●
Use malware analytics (sandbox) on suspicious files			500 samples/day	Unlimited samples
Use retrospective security to identify previously-benign files that became malicious			●	●

DNS Essentials	DNS Advantage	SIG Essentials	SIG Advantage
----------------	---------------	----------------	---------------

Security & Controls

Remote browser isolation (RBI)

Provide safe access to risky sites			Isolate Risky optional add-on	Isolate Risky optional add-on
Provide safe access to web apps			Isolate Web Apps optional add-on	Isolate Web Apps optional add-on
Provide safe access to any web destination			Isolate Any optional add-on	Isolate Any optional add-on

Firewall

Create layer 3/layer 4 policies to block specific IPs, ports, and protocols			●	●
Deepen protection for outbound traffic using application layer 7 policies with intrusion prevention system (IPS)			Optional add-on	●
Use IPSec tunnel termination			●	●

Data loss prevention (DLP)

Enable inline inspection of web and cloud app traffic for sensitive data			Optional add-on	●
--	--	--	-----------------	---

Cloud access security broker (CASB)

Discover and block shadow IT with App Discovery report	By domain	By domain	By URL	By URL
Create policies with more granular controls (block uploads, attachments, and posts) for select apps			●	●
Scan and remove malware from cloud-based file storage apps			2 applications	All supported applications

	DNS Essentials	DNS Advantage	SIG Essentials	SIG Advantage
Security & Controls				
Umbrella Investigate				
Access Investigate's web console for interactive threat intel		●	●	●
Use Investigate on-demand enrichment API to send domain, URL, IP, and file info to other systems (2,000 request/day) ¹		●	●	●
Integrate with SecureX to aggregate activity across Cisco products	Reporting & enforcement APIs	All APIs	All APIs	All APIs
Secure Malware Analytics				
Speed up incident response and uncover malicious domains, IPs, ASNs and files				●
Traffic forwarding				
Forward external DNS for:				
<ul style="list-style-type: none"> On-network coverage via Cisco (SD-WAN, Meraki, ISR, & WLAN) and third-party integrations (Cradlepoint, Aerohive, & others) Off-network via Umbrella roaming client or Cisco Security Connector iOS app 	●	●	●	●
Cisco AnyConnect client (license included) to deploy Umbrella module to forward traffic	●	●	●	●
Send outbound network traffic via IPsec tunnel, Cisco Secure VPN (AnyConnect), proxy chaining, or PAC files	●	●	●	●

	DNS Essentials	DNS Advantage	SIG Essentials	SIG Advantage
Security & Controls				
User attribution				
Create policies and view reports by network (egress IP), internal subnet ² , network device (including VLAN & SSID) ³ , roaming device, and Active Directory group (including specific users) ⁴	●	●	●	●
Create policies and view reports using SAML			●	●
Management				
Customize block pages and bypass options	●	●	●	●
Use our multi-org console to centrally manage decentralized orgs	●	●	●	●
Use our management API to create, read, update, and delete identities for child orgs	●	●	●	●
Reporting & logs				
Leverage real-time activity search and our reporting API to easily extract key events	●	●	●	●
Choose North America or Europe log storage	●	●	●	●
Use customer AWS S3 bucket to export and retain logs as long as needed, or a Cisco-managed S3 buckets for longer log retention ⁵	●	●	●	●
Access logs	For domains (30-day details, 1-year summary)	For domains (30-day details, 1-year summary)	For domains, URLs, & firewall (30-day details)	For domains, URLs, & firewall (30-day details)

	DNS Essentials	DNS Advantage	SIG Essentials	SIG Advantage
Security & Controls				
Support				
Enhanced - 24x7 technical + on-boarding	Required	Required	Required	Required
Premium - 24x7 technical, on-boarding, + Technical Account Manager (TAM)	Optional add-on	Optional add-on	Optional add-on	Optional add-on

- MSSPs can purchase (and use):
 - Investigate Console (licensed per analyst)
 - Investigate Integration API (licensed per analyst)
 - MSSPs cannot purchase the Investigate API Tier 1, 2, or 3
 End customers can purchase
 - Investigate Console (licensed per analyst)
 - Investigate Integration API (licensed per analyst)
 - Investigate API (Tier 1, 2, 3) (licensed per site)
- Internal IP attribution requires network footprint (our virtual appliance, not available in Professional package) or Meraki MR integration Cisco ISR integration, or Cisco ASA integration
- Requires network device integration with Cisco Integrated Services Router (ISR) or Cisco Wireless LAN Controller
- Active Directory (AD) policies and attribution requires Umbrella AD connector with network footprint (Umbrella virtual appliance) or endpoint footprint (Umbrella roaming client or AnyConnect roaming module)
- No Amazon account required when using the Cisco-managed S3 bucket