

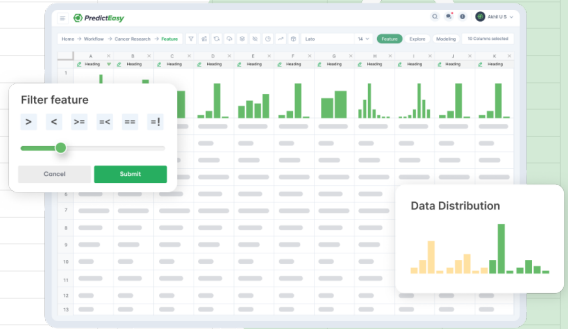
# AI Powered Data Analytics Using

Google Sheets



**PredictEasy**  
Google Add-on

Seamlessly Integrate Analytics and ML in Google Sheets™

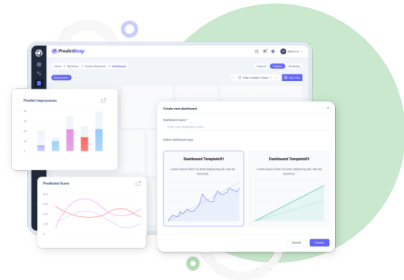


## Data Exploration and Analysis

Perform Basic Exploratory Data Analysis with ease - Now Cleaning and Understanding Data has become easy with our Intuitive Data Analytics Platform.

## Intuitive Data Visualisation

Seamlessly Visualise Data with No-Code Interface - Create Interactive Charts, Graphs and Dashboard, to present your Data in the most meaningful way.



## Machine Learning Made Easy

Unleash the Power of ML with a Single Click - We have a comprehensive library of built-in Algorithms, enabling users to effortlessly Select, Deploy, and Utilise the models of their choice and drive impactful results with ease.

Incorporate No Code analytics with Google Sheets™

Enterprise Pricing Plans :

**\$19** | Pro  
/month/user  
Hobbyst, Resercher

**\$99** | Business+  
/month/user  
Enterprise and institutions

Lifetime **Free** Community Edition on SignUp

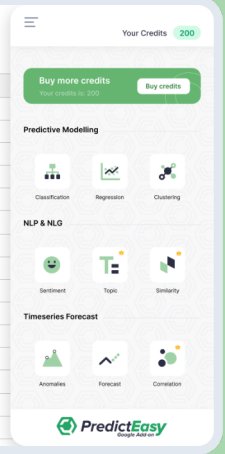


# Meet Sarah

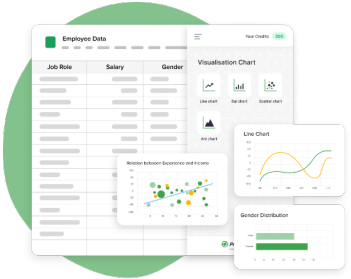
VP of Operations,  
ACME International Bank



Job role	MonthlyIncome	Gender	Age	Attrition
Sales_Executive	19479	Male	35	Yes
Research_Scientist	14567	Male	23	No
Laboratory_Technician	13567	Female	45	Yes
Research_Scientist	15678	Male	23	Yes
Research_Scientist	114567	Female	34	Yes
Manager	1234876	Female	40	No
Research_Scientist	15689	Female	34	No
Manufacturing_Director	199875	Male	24	No
Representative	123409	Male	43	Yes
Research_Scientist	163456	Female	44	Yes
Research_Scientist	12987	Female	29	Yes
Representative	18975	Male	33	No
Research_Scientist	199924	Male	38	No
Representative	16533	Female	46	Yes

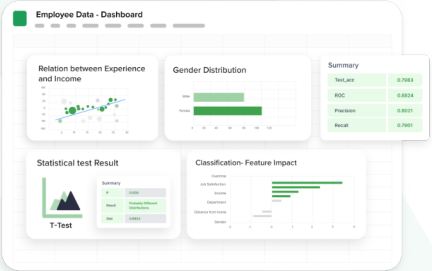
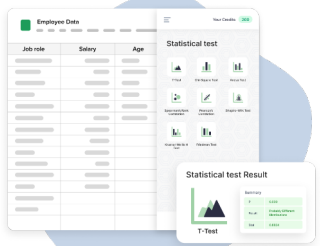


Sarah faces a **high attrition rate** and wants to figure out ways to **improve employee retention**.



Sarah creates a series of interactive charts and graphs we were able to identify patterns and relationships' understand distribution.

Sarah performs a statistical analysis, to compare the differences between attrition and salary.



It is observed that **overtime, job satisfaction, and income** are the top 3 metrics that **impact the attrition rate**. Proper interventions on these factors we can see an **improvement in employee retention**.

## What our customer say

*It is good to initially understand data and brainstorm for further analysis*  
Ritika Kumari ★★★★★

*Machine Learning made easy through Google Sheets helps in our day to day analytical process*  
Abhay ★★★★★

*PredictEasy brings a tool to the data approach rather than the vice versa, which helps make quick analytical decisions without writing code.*  
Sathya Narayanan ★★★★★



+91 9600 32 9587  
sales@cleverinsight.co

<https://sheets.predicteasy.com>  
<https://cleverinsight.co>

