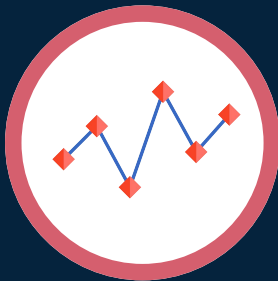
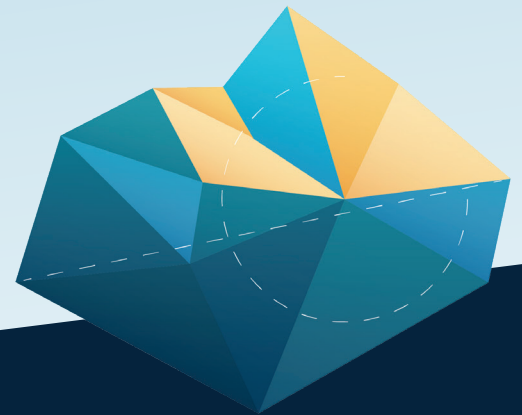




Azure Backup

Design

Data loss and downtime costs money, so you need to be confident knowing your environment is running optimally and securely. Cloud Direct's Backup Design allows you to understand how Azure Backup can be used to backup your estate whether it be on-premises or in the cloud. We'll help you assess and understand the current and future state of your environment, providing a migration plan aligned to your business needs and Microsoft's best practice.



Identify your target state

Review your current backup estate with a realistic view of its future state, detailing your adoption strategy for a reliable, secure and cost-effective deployment solution in the cloud.



Align to Microsoft's best practice

Tell at a glance if you're taking the necessary steps to build reliable, secure, and cost efficient solutions, and to prioritise the actions that will yield the biggest improvement to the posture of your backup estate.



Knowledge Transfer

We believe in partnering with our customers and sharing our knowledge. We'll walk through the next steps for implementation so that you gain the confidence you need to know your backup environment will run optimally and securely in the cloud.

Providing the support you need

-  Experts in the UK and Cape Town, dedicated to serving Cloud Direct customers
-  Our world-class Net Promoter Score of 85 proves how happy our customers truly are

Contact Cloud Direct

Talk to our experts and discover how Cloud Direct can support your business to achieve fearless growth:

01225 300 330
enquiries@clouddirect.net
www.clouddirect.net