

# Windows 365



# About Us





# When deciding on significant technological changes, make sure you have our highly skilled team by your side!

CloudEdge is a leading Microsoft Partner, dedicated to utilizing the power of the cloud and refining it to match customer needs.

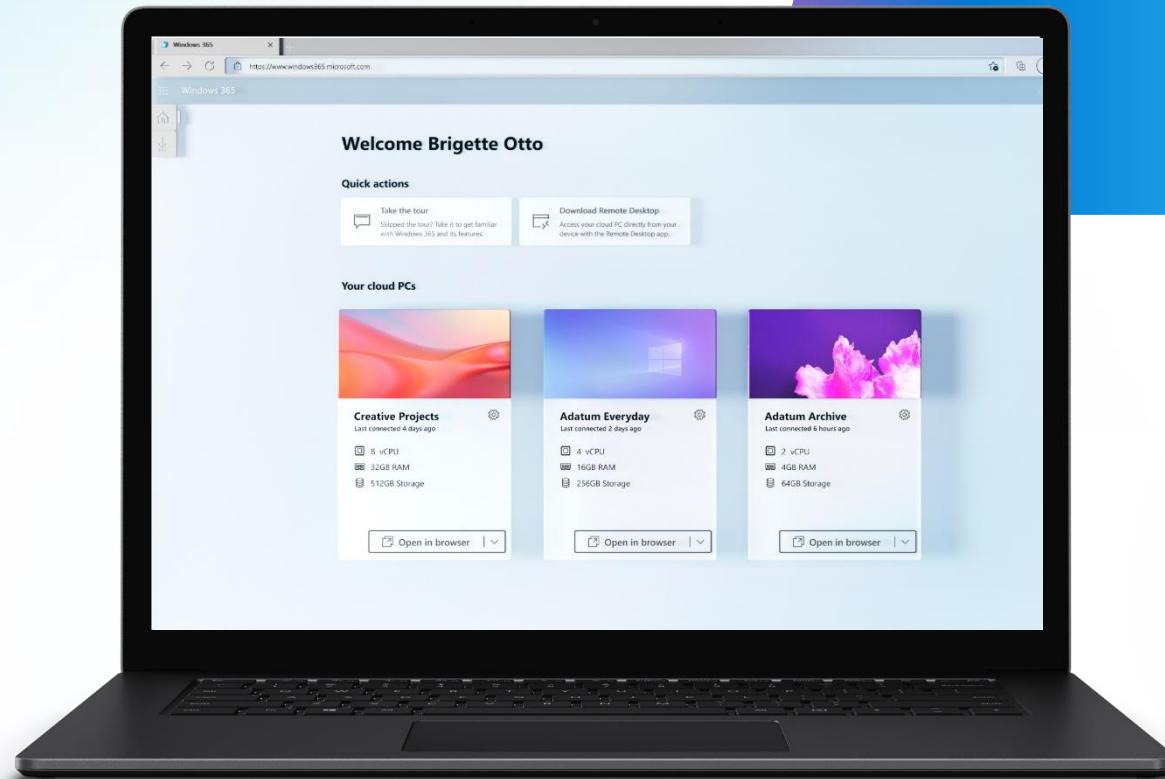
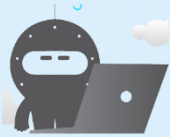
We specialize in a wide variety of Microsoft cloud solutions, including Microsoft Azure, 365, automation, DevOps etc.

We bring with us both official certifications and Advanced specializations by Microsoft and a broad field experience with top customers and organizations.

As Microsoft's Partner of the Year (2022), we are aligned with Microsoft's highest standards of proven expertise, chosen by Microsoft as a leading and unique partner on both local and global levels (Fast Track, Microsoft MSSP expert).

# Overview

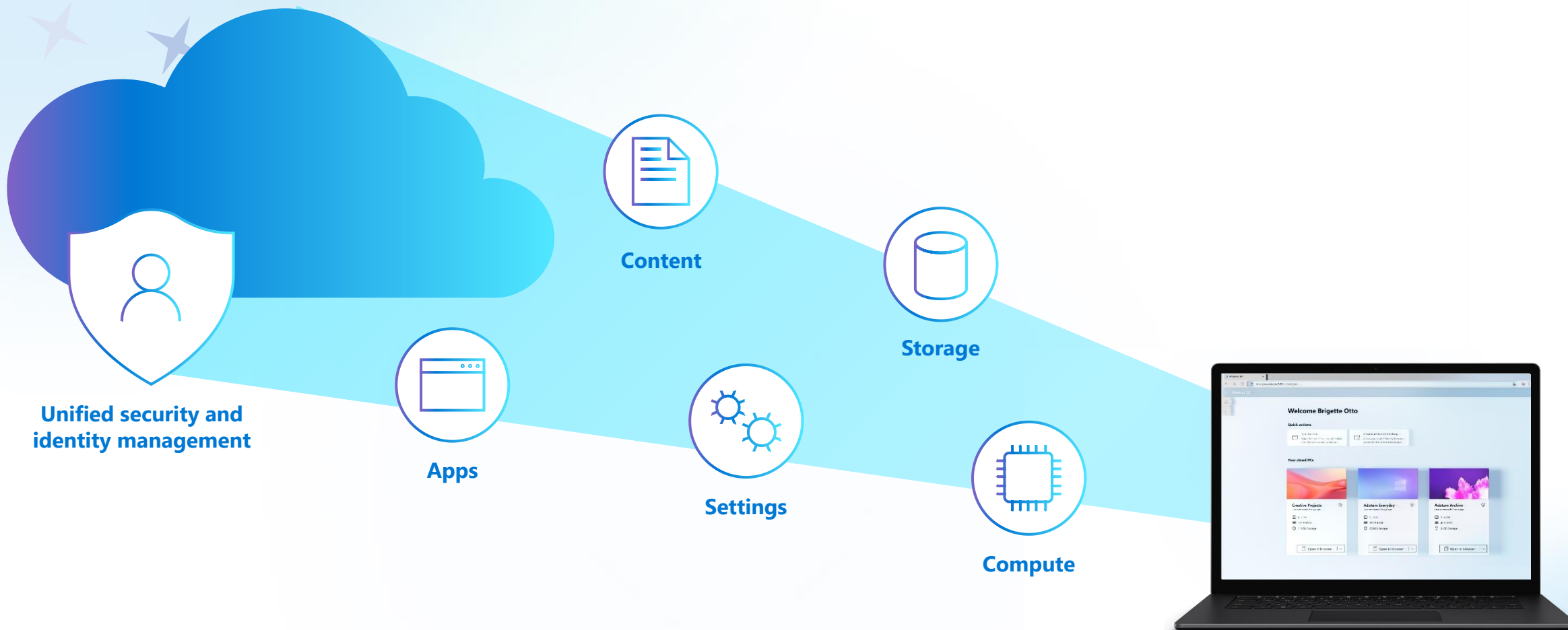




5 **Windows 365** is a **cloud-based service** that allows organizations to **stream** the **full experience of Windows OS** via the internet.



# Windows 365: Cloud PC





# Windows 365: with Microsoft 365



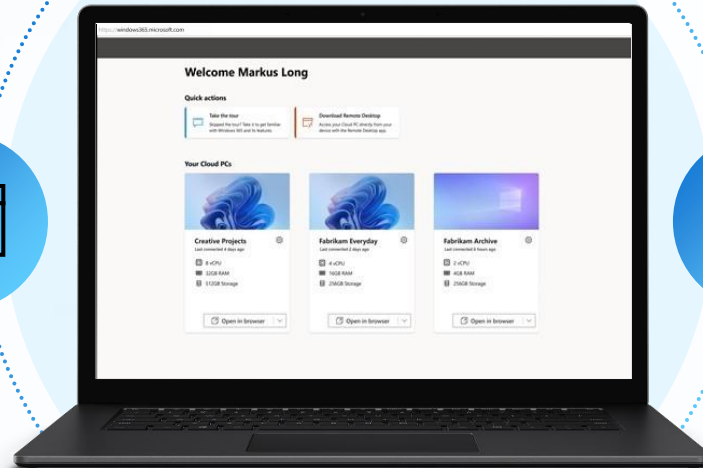
Azure Active Directory Identity



Microsoft 365 Apps



Microsoft Defender



Microsoft Endpoint Manager



# Windows 365: Availability and Licensing



## Licensing

Per User / Per Month / Per Configuration

## Licensing Prerequisites

Windows Enterprise, Microsoft Endpoint Manager & Azure AD P1; **Or**  
Microsoft 365 E3/E5, A3/A5 F3, Business Premium, Education Student Use Benefit

## Regions

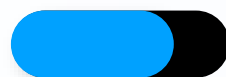
US (Central, East, East 2, West 2, West 3, South Central)  
Asia Southeast  
Australia East  
**Europe (North, West)**  
UK South  
Canada Central  
Germany West Central  
India Central  
Japan East  
France Central

## Available SKUs



**8vCPU**

32GB / 128GB  
32GB / 256GB  
32GB / 512GB



**4vCPU**

16GB / 128GB  
16GB / 256GB  
16GB / 512GB



**2vCPU**

4GB / 64GB  
4GB / 128GB  
4GB / 256GB  
8GB / 128GB  
8GB / 256GB

\*Supports Nested Virtualization:

- Windows Subsystem for Linux (WSL)
- Windows Subsystem for Android
- Sandbox
- Hyper-V

## Regions\*

US (East, East 2, West 2, West 3, South Central)  
Australia East  
**Europe (North, West)**  
UK South  
Canada Central  
India Central  
Japan East  
France Central





# Windows 365: Business and Enterprise



Capability	Business	Enterprise
Purchase Channels	Web Direct, Self-Service and CSP	Web Direct, EA and CSP
Users	< 300	Unlimited
Prerequisite Licenses	-	Windows Enterprise, Microsoft Endpoint Manager and Azure AD Premium P1
Identity	Azure AD Join	Azure AD Join or Hybrid Azure AD Join
Azure	Microsoft Hosted Network	Microsoft Hosted Network or Bring Your Own Azure Virtual Network
Management	Windows 365 Portal	Microsoft Endpoint Manager
Policy Management	-	Intune or Group Policy Objects (GPO)
Images	Standard Image (Windows 10/11)	Gallery or Custom Images (Windows 10/11)
Purchase Channels	Web Direct, Self-Service and CSP	Web Direct, EA and CSP

# Why do customers care about Windows 365?



## Simple to buy, deploy, and manage

Customers like VDI, but it's complex, hard to scale across geographies and takes lots of IT resource

Windows 365 is SaaS for VDI – it's simple, scalable and requires no IT admin overhead



## Always ready and updated

Provisioning a Windows 365 Cloud PC is simple as assigning a license in the Microsoft 365 admin portal

An IT admin can give an up-to-date Cloud PC to 1,000's of users in under 1 hour



## Predictable costs

Traditional VDI costs are variable, and use consumption-based compute (Azure)

Windows 365 is a fixed per user per month cost, with Disaster Recovery built-in by design



## Streamed to any devices

A Cloud PC will bring old hardware to life - think of Windows 365 as an OEM alternative

We continually performance tune and optimize the end user experience to feel like a modern physical PC



# What are the Windows 365 use cases?



**40%**  
deployments  
start here



## Data security

Improve regulatory compliance and IP protection via data centralization and a reduced threat surface.



## Disaster recovery

Help ensure continuity and access for your workforce and company data even in the most challenging circumstances.



## Developers

Cloud-scale compute and storage to support specialized workloads like design and development.



## Temporary workforces

Simplify and accelerate the onboarding and offboarding process for elastic workforces.



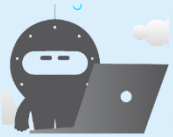
## BYOPC programs

Enable secure Cloud PCs, even on personal devices.



## Mergers & Acquisitions

Provide seamless transitions and access for growing businesses.



# Top Use Cases for Windows 365?



1

## Developers

Whether it be Excel, HPC, Autocad or simple VS/GitHub needs, developers need additional machines.

2

## Citrix on-premise

Customers with an older on-premise Citrix environment for which the contract is ending or they need to renew the hardware (too costly so looking for alternative solutions)

3

## External staff / Contractors

Customers with external staff requirements:  
→ Trainees/students  
→ External contractors, IT outsourcers

4

## M & A

Customers with users in different regions and challenges with device shipments and shortage. Often Global/Strategic accounts. Integration costs are high

## Next steps

- 1 Learn more at [windows365.com](https://windows365.com)
- 2 Contact Cloudege Team to schedule Demo

