



Cloud
Gate

Company Profile



About CloudGate



About Us

Company Overview

CloudGate delivers digital transformation and technology services from ideation to execution, enabling Global clients to outperform the competition. **Cloud Gate** is "Born digital," and takes an agile, collaborative approach to creating customized solutions across the digital value chain. At the same time, our deep expertise in infrastructure and applications management helps optimize your IT into a strategic asset.

Whether you need to differentiate your company, reinvent business functions, or accelerate revenue growth, we can get you there. Digital transformation is powered by Cloud Transformation and **Cloud Gate** delivers a holistic approach to cloud transformation—from advisory to build, and from migration to management—that accelerates a company's move to digital business

About Us

Partner Achievements

Microsoft
Partner



Advanced Specialization

Infra and Database Migration
to Microsoft Azure

 **Microsoft**
Solutions Partner

Infrastructure
Azure

Microsoft
Partner



Advanced Specialization
Threat Protection

 **Microsoft**
Solutions Partner

Security



Service Portfolio



Services overview



Training Services



Managed Services



Licensing Services



Consultancy



Professional Services



Security Assessment



Modern Work



Digital & App Innovation



Data & AI



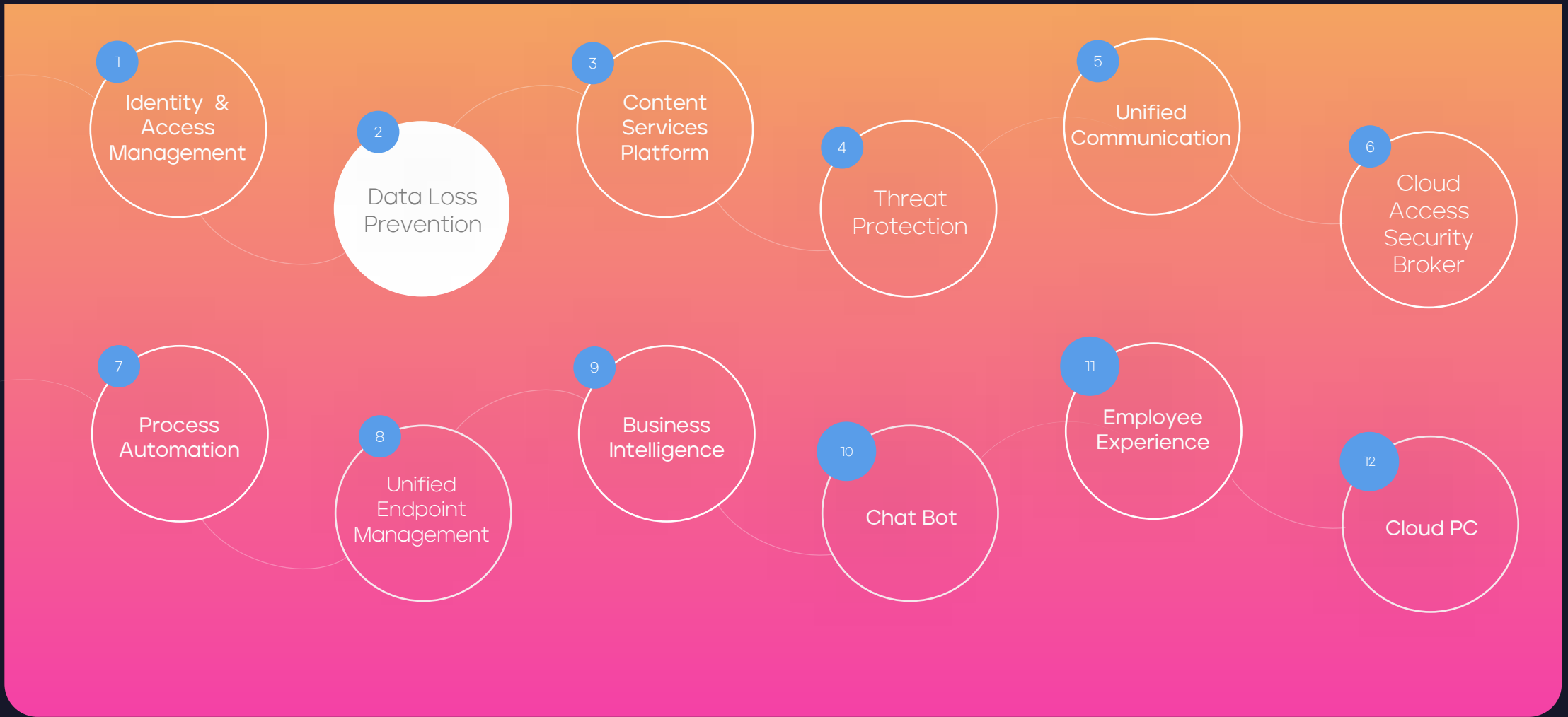
Business Applications



Security



Cloud Migration



Modernwork & Security



Azure Hosting & Migration



Cloud VDI



Hybrid Cloud



Business continuity & DR



Unified Infrastructure Monitoring



Unified Infrastructure management



Azure Devops Services



Content Delivery

Service portfolio

Azure



Cloud Solutions



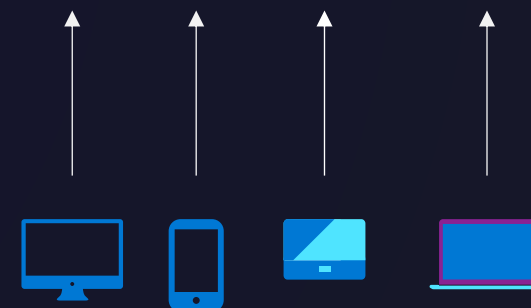
Azure Virtual Desktop

Definition :

- it's a desktop and app virtualization service that runs on the cloud.

Features :

- Set up a multi-session Windows 11 or Windows 10 deployment that delivers a full Windows experience with scalability
- Present Microsoft 365 Apps for enterprise and optimize it to run in multi-user virtual scenarios
- Virtualize both desktops and apps
- Manage desktops and apps from different Windows and Windows Server operating systems with a unified management experience



Azure Arc

Definition :

It's a hybrid cloud management solution that lets you Manage your entire environment together by projecting your existing non-Azure and/or on-premises resources into Azure Resource Manager.

Features :

- Manage virtual machines, Kubernetes clusters, and databases as if they are running in Azure.
- Use familiar Azure services and management capabilities, regardless of where they live.
- Manage your entire environment together by projecting your existing non-Azure and/or on-premises resources into Azure Resource Manager.
- Continue using traditional ITOps while introducing DevOps practices to support new cloud native patterns in your environment.



Single control plane with
Azure Arc



Bring **Azure services**
to any infrastructure

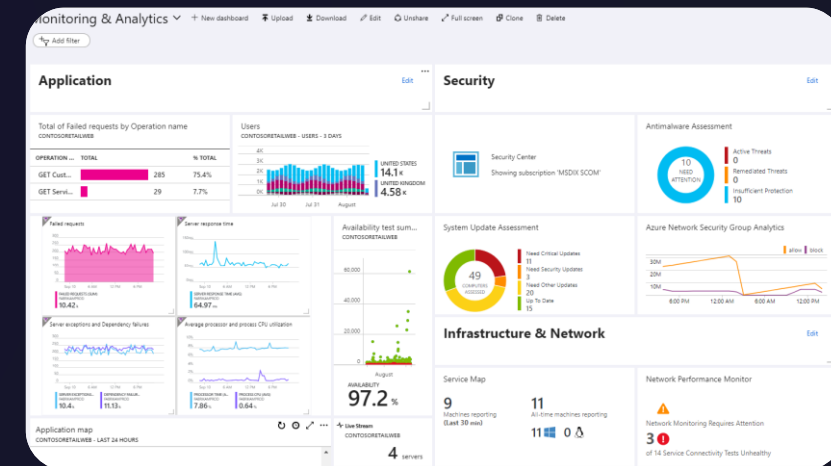
Azure Monitoring

Definition :

It helps you to maximize the availability and performance of your applications and services. It delivers a comprehensive solution for collecting, analyzing, and acting on telemetry from your cloud and on-premises environments.

Features :

- Detect and diagnose issues across applications and dependencies with Application Insights.
- Correlate infrastructure issues with VM insights and Container insights.
- Drill into your monitoring data with Log Analytics for troubleshooting and deep diagnostics.
- Support operations at scale with automated actions.
- Create visualizations with Azure dashboards and workbooks.



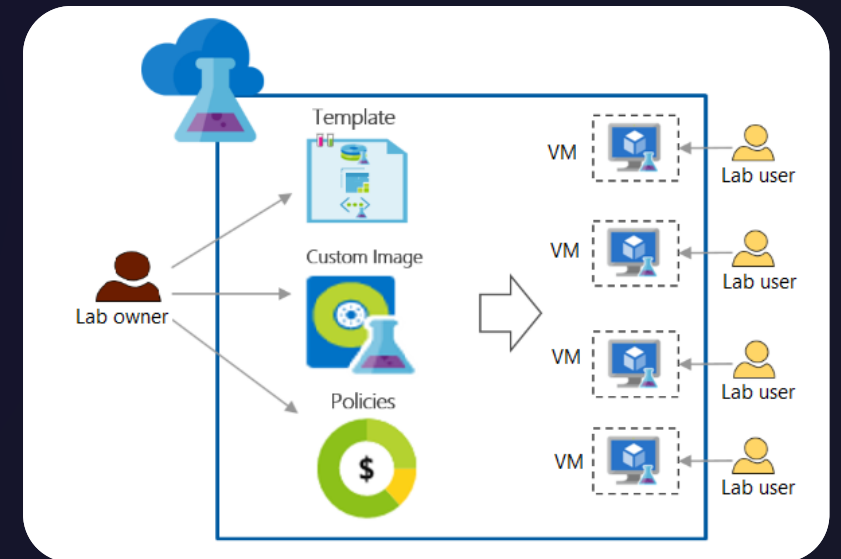
Azure DevTest Labs

Definition :

It's a service for easily creating, using, and managing infrastructure-as-a-service (IaaS) virtual machines (VMs) and platform-as-a-service (PaaS) environments in labs

Features :

- Create Windows and Linux training and demo environments, or sandbox resource groups for exploring Azure, by using reusable ARM templates and artifacts.
- Test app versions and scale up load testing by creating multiple test agents and environments.
- Create development or testing environments from continuous integration and deployment (CI/CD) tools
- Use the Azure CLI command-line tool to manage VMs and environments.



Azure Migrate Assessment

Definition :

provides a simplified migration, modernization, and optimization service for Azure. All pre-migration steps such as discovery, assessments, and right-sizing of on-premises resources are included for infrastructure, data, and applications

Use Cases :

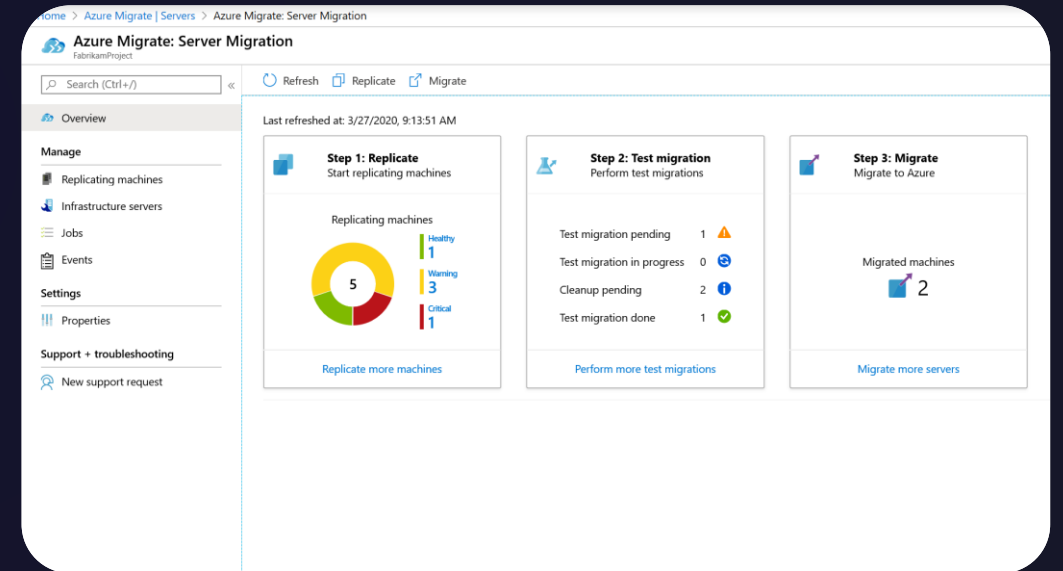
- Unified migration platform: A single portal to start, run, and track your migration to Azure.
- Assessment, migration and modernization: In the Azure Migrate hub, you can assess, migrate, and modernize:
- Servers, databases and web apps: Assess on-premises servers including web apps and SQL Server instances and migrate them to Azure virtual machines or Azure VMware Solution (AVS).



Azure Migrate Assessment

Migrations with Azure Migrate :

- Automatically apply groupings from assessment to migration
- Perform a test migration
- Pin migration to Azure Availability Zones
- Cutover to Azure with zero data loss



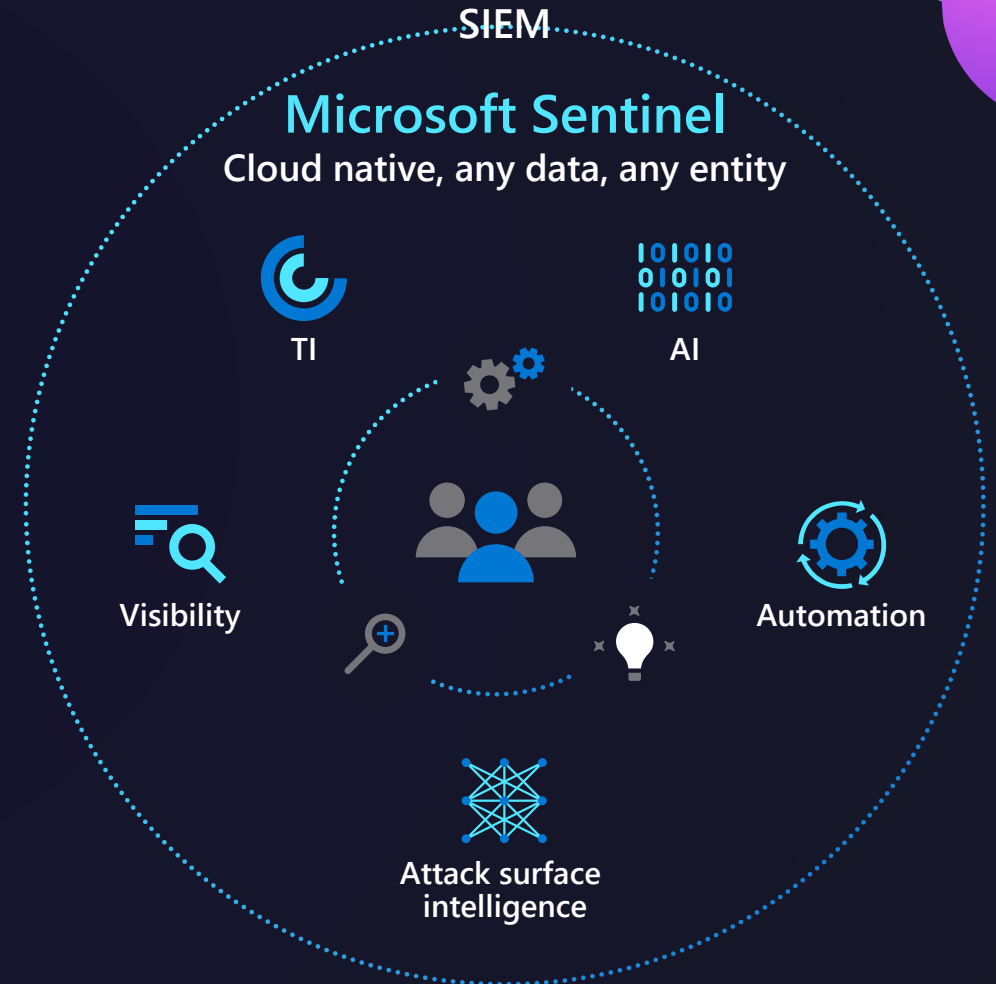
Microsoft Sentinel

Definition :

is a cloud-native security information and event manager (SIEM) platform that uses built-in AI to help analyze large volumes of data across an enterprise fast.

Features :

- Collect data at cloud scale across all users, devices, applications, and infrastructure, both on-premises and in multiple clouds.
- Detect previously undetected threats and minimize false positives using Microsoft's analytics and unparalleled threat intelligence.
- Investigate threats with artificial intelligence, and hunt for suspicious activities at scale, tapping into years of cyber security work at Microsoft.



Microsoft Sentinel

Definition :

is a Cloud Security Posture Management (CSPM) and Cloud Workload Protection Platform (CWPP) for all of your Azure, on-premises, and multicloud (Amazon AWS and Google GCP) resources

Features :

- Cloud Security Posture Management (CSPM) – Gives organizations visibility on their security posture via the secure score, detection of security misconfigurations, asset inventory and more.
- Cloud Workload Protection Platform (CWPP) – Uses advanced AI and ML based intelligent protection and detection capabilities for your Azure and hybrid cloud workloads. It also helps you track your compliance with regulatory frameworks and compliance standards (like PCI-DSS, NIST, ISO 27001, etc.)





Our clients





Thank You

