

Mastering DORA Metrics with DevLake

The Customer

Customer is India's largest provider of integrated payments technology, with leading enterprise brands as partners in changing the face of payments. Using technology, they provide smooth and secure payment solutions that help businesses optimize transactions and enhance customer experiences across multiple industries.



The Pre-State

The customer was facing challenges in managing and analyzing DevOps data across multiple tools due to on-premise infrastructure constraints. Because there wasn't any single view into integrated data, it became tough to trace key metrics accurately, hence fragmenting insights and increasing manual efforts in data collection. Also due to this, frequent errors and inconsistencies have been noticed in reports, which is affecting the focus of engineering teams on continuous improvement.

The Post State

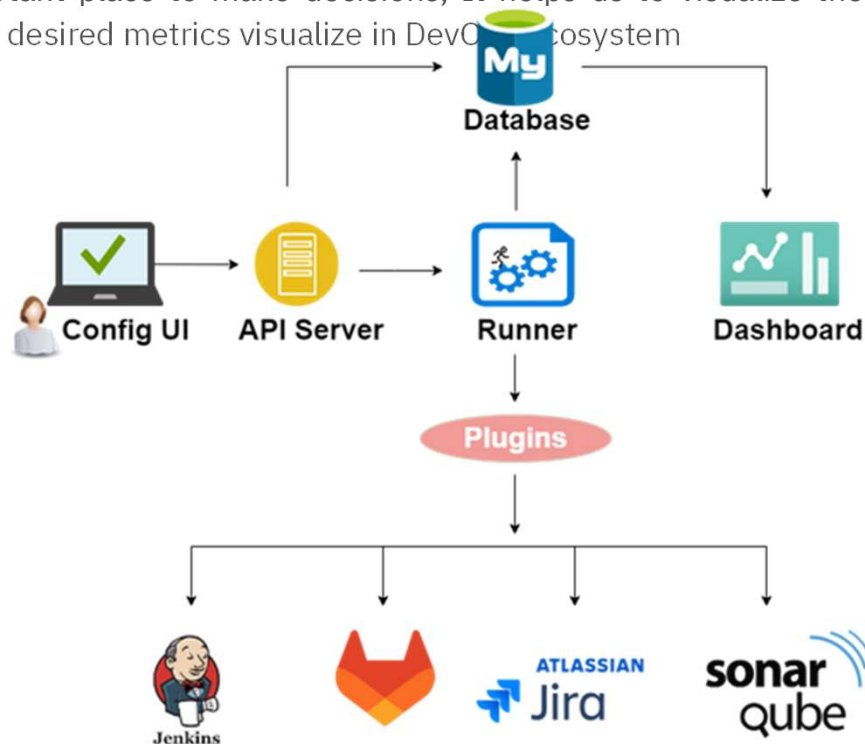
DevLake aligned very well with client business needs at the time, pushing forward the monitoring and analysis capabilities for the company in relation to DevOps. Such integration not only united data across several tools, it also made the tracing of key metrics easier, reduced manual data collection, and minimized errors. Devlake was much more efficient and insightful, allowing engineering teams to focus on continuous improvement rather than operational overhead leading to a 60% increase in deployment frequencies. Also, DORA metrics played an important role in tracing bottlenecks, increasing the reliability of their CI/CD pipelines, fastening delivery cycles, and increasing time-to-market by 40%.



Bridge:

The diagram below explains the data flow from different DevOps tools:

- **Config UI:** Help us to create Data Connections with tools like GitHub, GitLab, Jira, etc.,
- **API Server:** It will connect to Runner and Azure Database to interact across the machine.
- **Azure Database:** It stores the UserData and Pipeline Data connected by Data Connections in Blueprints.
- **Runner:** Execute the logic defined in ConfigUI and deliver it to Plugins and Azure Database.
- **Plugins:** Helps DevLake to connect with DevOps tools like GitHub and GitLab to get data.
- **Dashboard:** Important place to make decisions, It helps us to visualize the collected data and make the desired metrics visualize in DevOps ecosystem



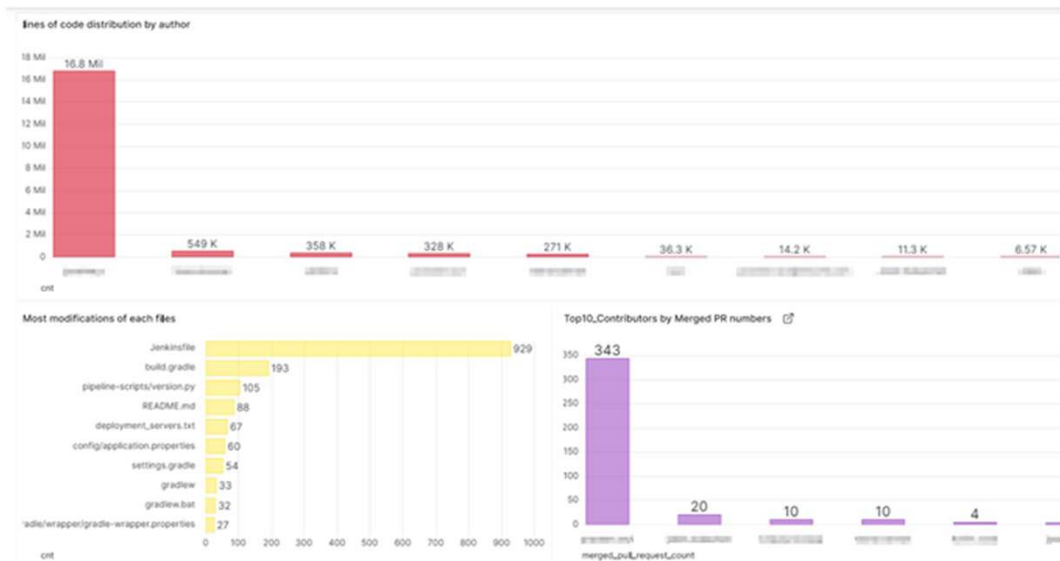
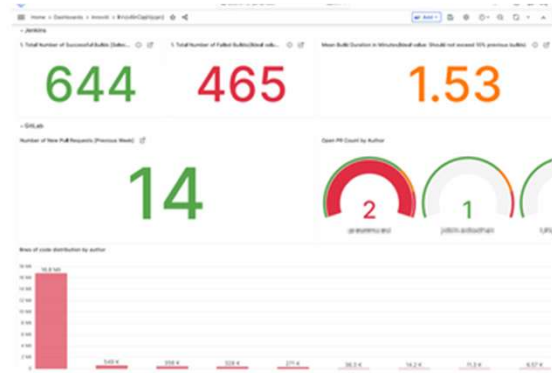
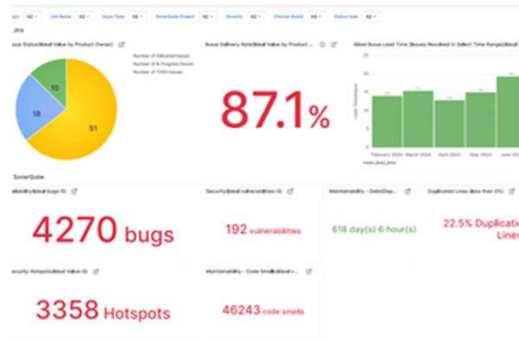
About CloudifyOps Pvt. Ltd.

[CloudifyOps is an Advanced tier partner of with Service Delivery Capability in WAF and a team of more than 20 engineers with certifications. An partner for more than 3 years to date, CloudifyOps has extensive experience in Cloud Engineering, DevOps Consulting & Implementation, Site Reliability Engineering, Cloud Data Infrastructure and Managed Services. We have worked with customers across Fintech, Edtech, Healthcare, Auto and Media Tech.](#)
www.cloudifyops.com | sales@cloudifyops.com

CloudifyOps
Accelerating your digital journey on Cloud



Combined metrics offer a complete performance overview:



About CloudifyOps Pvt. Ltd.

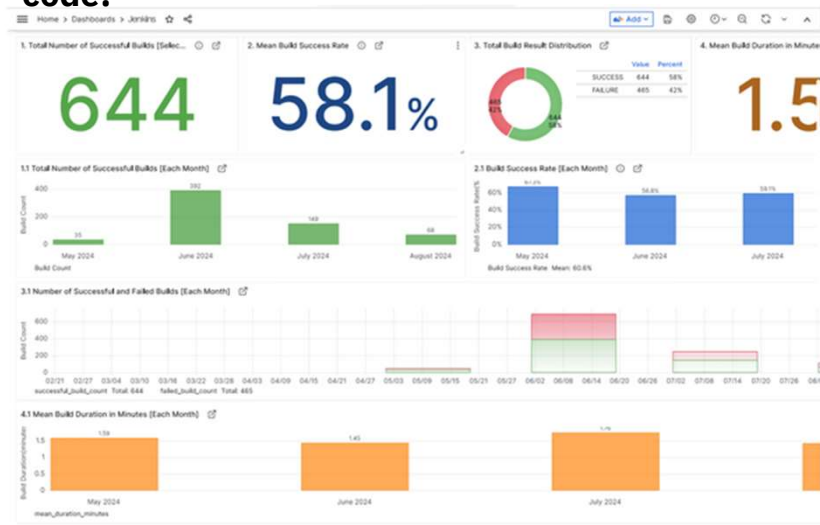
CloudifyOps is an Advanced tier partner of with Service Delivery Capability in WAF and a team of more than 20 engineers with certifications. An partner for more than 3 years to date, CloudifyOps has extensive experience in Cloud Engineering, DevOps Consulting & Implementation, Site Reliability Engineering, Cloud Data Infrastructure and Managed Services. We have worked with customers across Fintech, Edtech, Healthcare, Auto and Media Tech.

www.cloudifyops.com sales@cloudifyops.com

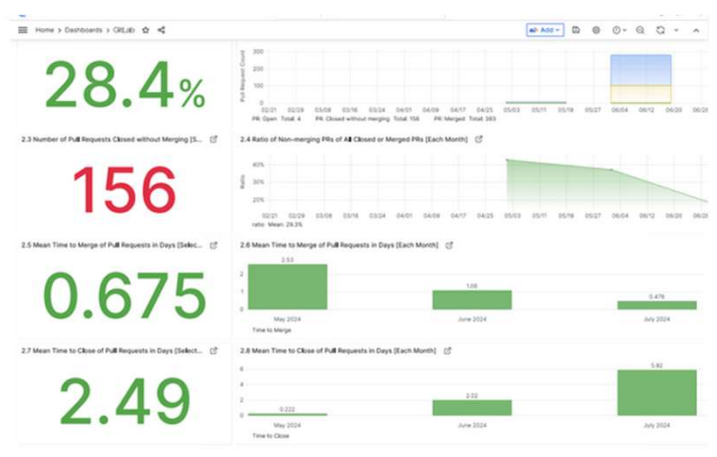
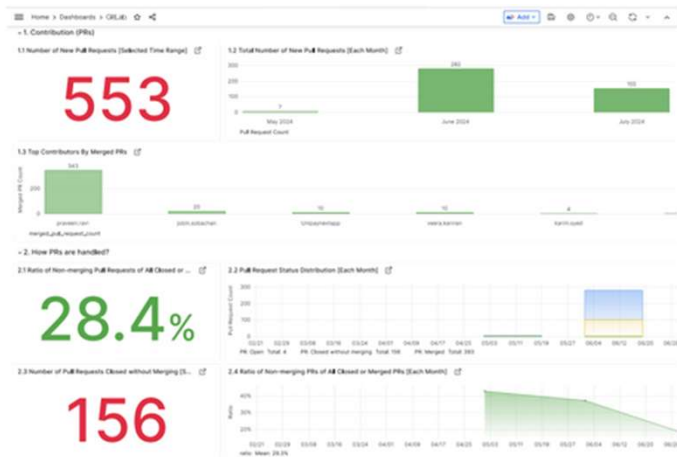
CloudifyOps
Accelerating your digital journey on Cloud



Metrics gathered from Jenkins source code:



Metrics obtained from GitLab repository data:



About CloudifyOps Pvt. Ltd.

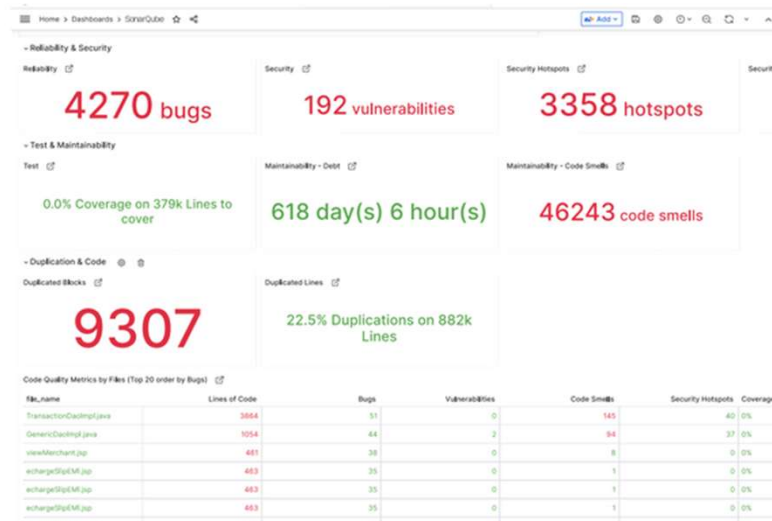
CloudifyOps is an Advanced tier partner of with Service Delivery Capability in WAF and a team of more than 20 engineers with certifications. An partner for more than 3 years to date, CloudifyOps has extensive experience in Cloud Engineering, DevOps Consulting & Implementation, Site Reliability Engineering, Cloud Data Infrastructure and Managed Services. We have worked with customers across Fintech, Edtech, Healthcare, Auto and Media Tech.

www.cloudifyops.com sales@cloudifyops.com

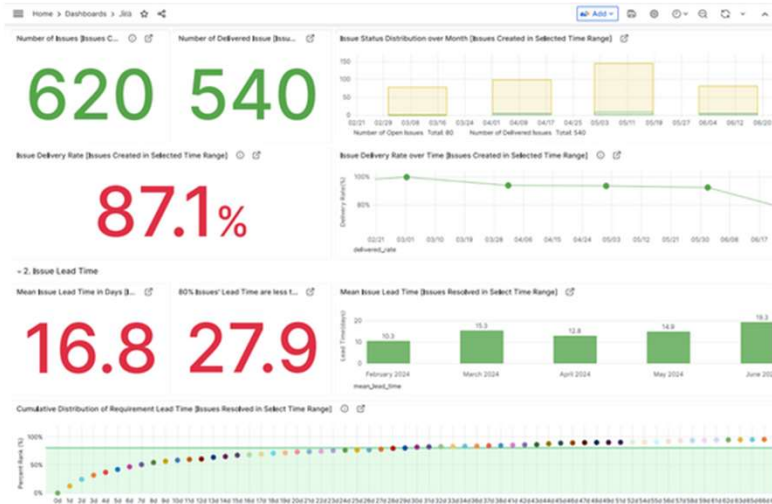
CloudifyOps
Accelerating your digital journey on Cloud



Metrics sourced from SonarQube analysis:



Metrics derived from Jira project management:



About CloudifyOps Pvt. Ltd.

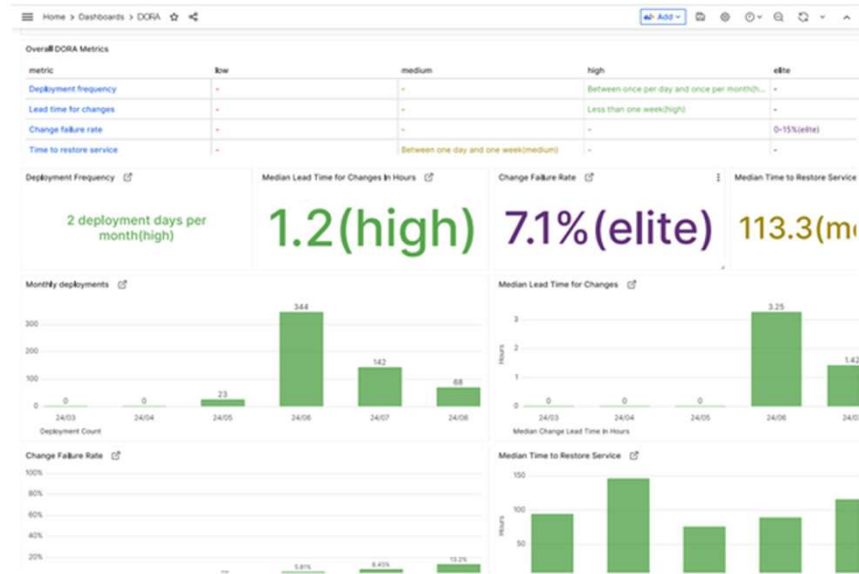
CloudifyOps is an Advanced tier partner with Service Delivery Capability in WAF and a team of more than 20 engineers with certifications. An partner for more than 3 years to date, CloudifyOps has extensive experience in Cloud Engineering, DevOps Consulting & Implementation, Site Reliability Engineering, Cloud Data Infrastructure and Managed Services. We have worked with customers across Fintech, Edtech, Healthcare, Auto and Media Tech.

www.cloudifyops.com | sales@cloudifyops.com

CloudifyOps
Accelerating your digital journey on Cloud



Metrics extracted from DORA dashboard insights:



About CloudifyOps Pvt. Ltd.

CloudifyOps is an Advanced tier partner of with Service Delivery Capability in WAF and a team of more than 20 engineers with certifications. An partner for more than 3 years to date, CloudifyOps has extensive experience in Cloud Engineering, DevOps Consulting & Implementation, Site Reliability Engineering, Cloud Data Infrastructure and Managed Services. We have worked with customers across Fintech, Edtech, Healthcare, Auto and Media Tech.

www.cloudifyops.com | sales@cloudifyops.com

CloudifyOps
Accelerating your digital journey on Cloud