

# Cobweb Azure Identity and Access Management

## Synchronising on-premises Active Directory accounts to Azure Active Directory

When moving to the cloud, ensuring the security and control of user identities, application access and sign-in capabilities for both on-premises applications and public cloud services is critical for every business.

Whether in Office 365, on-premises solutions or other third-party cloud services, providing a single corporate identity for accessing applications and corporate data means:

- employees need to remember fewer usernames and passwords, and which provides better security for the business
- simplified access for employees
- greater control for IT administrators.

The Microsoft Azure logo, consisting of a white four-pane grid icon on a black cloud shape, with the text "Microsoft Azure" to its right.

Microsoft  
Azure



## Azure Active Directory (Azure AD)

**Azure Active Directory (Azure AD)** is Microsoft's central authentication platform for delivering security, identity and access management across device and infrastructure, for applications implemented in the cloud, on mobile, on-premises. Azure AD enables businesses to better manage user identities and to develop intelligence-based access policies.



## Cobweb's Azure Identity and Access Management service

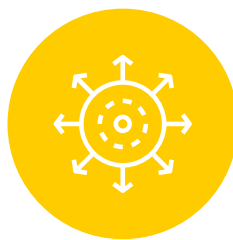
Cobweb's Azure Identity and Access Management service has been created to ensure that businesses implement the best possible security as they move to the cloud, and moving forward maintain that best practice.

The service starts by helping businesses plan and implement directory synchronisation between on-premises Active Directory and Azure AD, and to activate enhanced security elements within the service, such as multi-factor authentication and third-party application integration. Once deployed, Cobweb's experts can monitor and manage the solution to ensure identity security is maintained at the highest level.

The services comprise three phases:



Assessment



Implementation



Management

Additional service options are available to layer on top of this base package, such as third-party cloud application integration and enhanced security features, with multi-factor authentication an example.



## Assessment

### Who should be involved?

We recommend that key personnel from the IT team as well as management and executive level stakeholders participate in the initial part of the assessment stage, as this is where key information for your selected requirements is explained and configuration options chosen to deliver on your desired business goals and outcomes.

The assessment phase can be provided on-site or remotely, and incorporates the following:



A **consultation workshop** with your IT team and other interested stakeholders, to go through your business goals and Azure AD Identity and Access Management configuration concepts and features, helping you to understand the deployment options available and selecting the features that best suit your requirements – including for password synchronization, write-back functionality, and seamless sign-on capabilities.



A **detailed assessment of your on-premises Active Directory and infrastructure** is then performed, to look at the overall health, configuration and versions of the current identity infrastructure. This ensures that the pre-requisites for a successful deployment are met, as well as meeting Microsoft best practice requirements.



We **create a report**, based on the consultation workshop and detailed assessment outcomes, and which details the steps necessary to implement directory synchronisation using the configuration options agreed, and including changes required to the on-premises Active Directory and surrounding infrastructure necessary to support the change.

The report covers key requirements and best practice that we know and understand as a Microsoft Gold Partner, to ensure a successful planning exercise for your Identity and Access management solution. The work is divided into two streams:

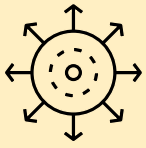
- Work you, as the customer, are happy to undertake
- Work to be supported by Cobweb.

### Assessment - summary

**Consultation Workshop**, to detail the Azure AD Identity and Access Management configuration concepts, features, and options available, to help you select those that best suit your requirements.

**Baseline Assessment of on-premises Active Directory and infrastructure** to assess overall health, and ability to meet required deployment pre-requisites. Additional assessments are performed depending on the desired Azure AD Connect configuration.

**Cloud Discovery Report**, documenting the selected features for your Identity and Access Management solution and the pre-requisite work required to be completed to allow directory synchronisation to be implemented.



## Implementation

Once the assessment phase and any pre-requisite activities have been completed, the deployment of the selected Azure Identity and Access Management capabilities for your business begins.

The implementation project first deploys the necessary agents in a **pilot scenario with key users** to confirm the required configuration is working as expected, before being **rolled out across all business units**.

**A summary of the work** undertaken is provided to the relevant stakeholders, detailing how the mechanics of the service work. Notification services for the overall health of the system are set up, before hand-over of the configured in-life service.

### Implementation - summary

Deployment of the necessary services and agents with your desired configuration is delivered in two key stages – a **pilot** to provide assurance the solution is working as expected, followed by the **full roll-out** of the solution across the business.



## Management

The Cobweb Complete for Azure Identity and Access Management managed service is designed to help organisations maximise the benefits of their investment in identity management and directory synchronization, through the following:



Advanced active monitoring and management elements keep directory synchronisation in-check and safe



Orchestrated platform maintenance, including patching and updates, keep your directory synchronisation service secure and up-to-date



Synchronisation issue troubleshooting, incorporating problem identification and remediation carried out on your behalf



24\*7 reactive support, if you need to contact us or make changes.



## What are the benefits of Cobweb's Azure Identity and Access Management solution?

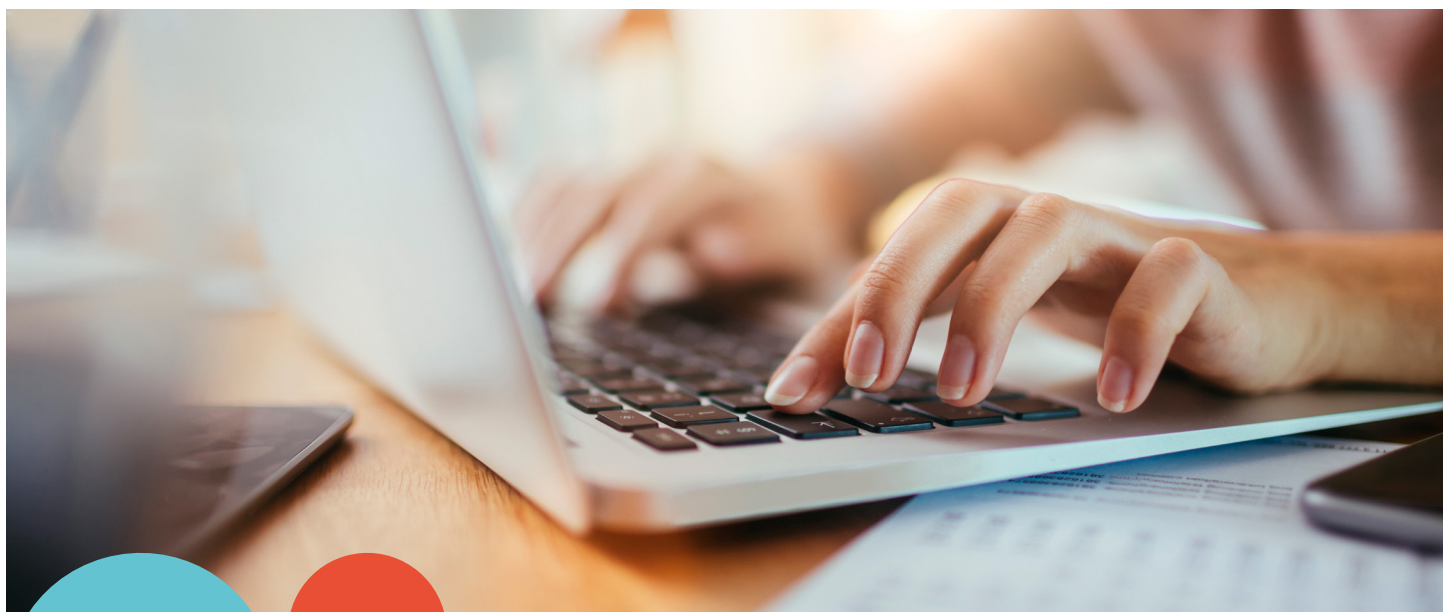
Cobweb is a Microsoft Gold Partner and employs best practice to ensure project success through from discovery to implementation and on-going solution management. By undertaking a thorough assessment of your on-premises infrastructure, we tailor your Azure Identity and Access Management deployment to meet your specific on-premises and cloud IT identity needs.

We will ensure you benefit from advanced on-premises integration with Office 365, including, for example:

- seamless sign-on to provide promptless access to Office 365 workloads
- pass-through authentication to provide real-time authentication requests between Office 365 and your on-premises Domain Controllers
- password protection to provide enhanced password protection to your on-premises Active Directory.

With workloads in Office 365, you benefit from enhanced security features, including:

- multi-factor authentication to require more than just a username and password to access corporate resources
- conditional access to provide granular controls on where and how corporate resources can be accessed
- privileged identity management to provide 'just in time' administrative access, with workflow approval processes for giving administrators the right access to make the necessary changes at the right time
- and, providing tight cohesion between supported third party cloud services to simplify your joiners' and leavers' processes.





## Next steps

For more information about Cobweb's Azure Identity and Access Management service, call any of the Cobweb team on **0333 009 5941**, or email **hello@cobweb.com**. We're here to help.

Let the Cloud work for you. Call us now to find out how Cobweb can help your business become more agile, productive and mobile.

☎ 0333 009 5941

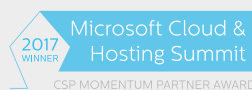
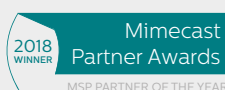
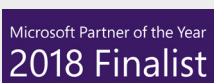
✉ hello@cobweb.com

🖱 www.cobweb.com

### About Cobweb

Cobweb is one of Europe's largest cloud solutions providers. Founded in 1996, the company draws on in-depth expertise and decades of experience in what is now known as cloud, empowering organisations of all sizes to grow into flexible, agile businesses through the deployment of best-of-breed cloud technologies.

A member of the Cloud Industry Forum and a Microsoft Gold Certified Partner, Cobweb was the first provider in Europe to deliver Microsoft cloud services through the Microsoft Cloud Solution Provider programme. The company prides itself on innovation and liberating its customers and partners through technology. This is backed up by UK support and advice 24 hours a day, 365 days per year. Based in London and Dubai, with an operations centre on the south coast, Cobweb is a British company with a global outlook.



Acronis

ACRONIS  
GOLD  
PARTNER



mimecast® Certified Partner

- Gold Cloud Platform
- Gold Cloud Productivity
- Gold Small & Midmarket Cloud Solutions
- Gold Communications
- Gold Messaging
- Gold Datacentre
- Silver Enterprise Mobility Management



London, United Kingdom

1 Canada Square, Canary Wharf, Level 39, London, UK E14 5AB  
www.cobweb.com, sales@cobweb.com, 0333 009 5941