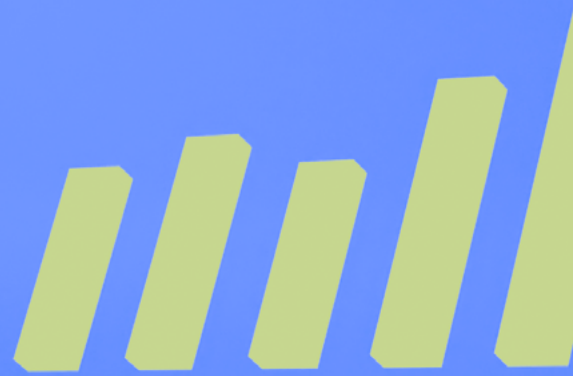




TOWER



What will you create today?



PRODUCT OVERVIEW

MARCH 2025

Codygon

Overview

Tower is an AI-powered dashboard generation tool designed to streamline data analysis and visualization for businesses. Tower connects to a wide range of data sources, automating the creation of insightful dashboards with minimal setup. By harnessing AI, Tower transforms raw data into actionable visuals, helping organizations quickly interpret and act on their data trends.

Features

Automated Dashboard Generation

Leveraging AI, Tower quickly analyzes data from connected sources to create tailored dashboards without manual configuration. You can simply establish the necessary data connections, and Tower does the rest.

Self-service analytics

You can filter the data using the filter panel which is generated automatically based on the data. You can also apply data transformation operations like changing the columns, computing new columns and renaming columns, to name a few, to get different metrics using chat.

Chat with your chart

If you need insights from the visualizations or want to make changes, you can use the chat functionality to get what you want in an easy-to-use manner. No need to memorize complex formulae.

Export charts

You can export your charts to common formats - PNG and PDF.

The export options are customizable - you can toggle showing of the filters, the header and the pages.

Wide Range of Data Sources

Tower supports a variety of data connections - Snowflake, Databricks, SQL databases and more - allowing users to seamlessly connect internal and external data sources to visualize performance, trends, and other critical metrics.

To enable the appropriate connector for your data source, please contact our team.

Actionable Insights (Enterprise plan)

Beyond visualization, Tower allows users to take immediate actions based on dashboard data. For example, if a chart shows that supply levels are decreasing, the user will be able to place an order directly from the dashboard. This enables timely decision-making without needing to switch between applications.

Features (Continued)

View and Edit Modes

For enabling quick operations on all sizes of datasets, we split our dashboards into 2 modes - View and Edit mode.

View Mode:

This mode shows charts generated on the complete dataset. You can view charts and apply filters but not make any changes.

Edit Mode:

This mode shows charts generated on a sample of the dataset instead of the entire dataset. This is in line with other enterprise ETL tools that show edit previews and allows to visualize changes quickly.

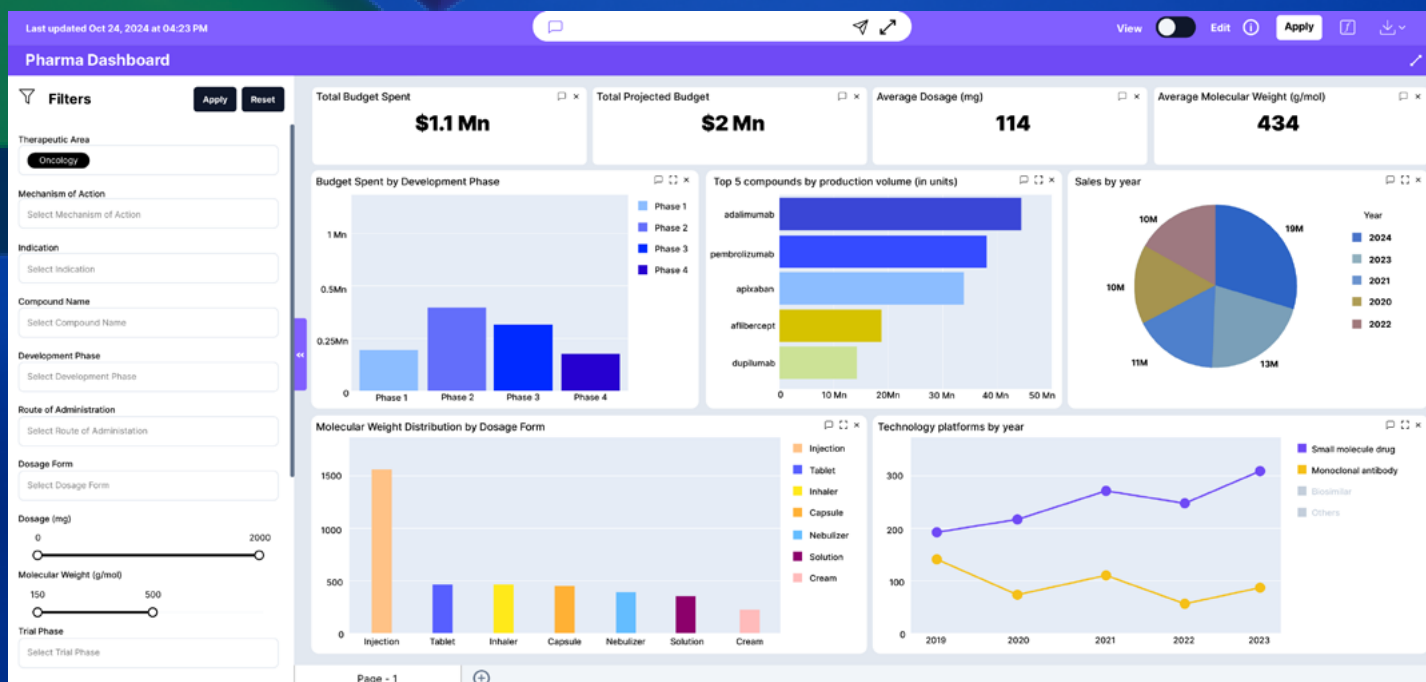
This mode offers customization of visualizations, adding data fields, or altering the dashboard layout to meet specific reporting requirements.

Note that to make the changes permanent, you need to click the Apply button.

Tower will then re-generate the chart with your modifications.

Enhanced Data Privacy (Enterprise Plan):

We built Tower for enterprises. Your data is NOT processed as-is in our cloud environment. Our solution gathers minimal metadata required to provide insights. Our IP, Tower Engine, works only with your metadata and user chat queries to provide you insightful dashboards. For enterprises we offer an agent component that connects to internal data sources within your environment and gathers the required metadata. We use robust enterprise-grade cloud solutions from Microsoft, Google and other reputed organizations to keep your data safe and secure. Our AI components are also designed to minimize access to your data. We don't sell your data to third-parties either.



A screenshot of a report generated using Tower (in-app view)

Pricing

Pro edition:

Connect to a variety of data sources - Excel, CSV, databases, CRM systems and more along with automated dashboard refreshes at periodic intervals and DQ rules.

\$100 / user / month

(Price as on March 2025)

Enterprise edition:

For our enterprise customers, we offer a customized version of Tower featuring:

- Embedded Analytics:

Allows embedding within enterprise systems inheriting granular RBAC

- Control-tower dashboard:

Allows users to take decisions from the dashboard itself - re-order stock, create a ticket, send an email highlighting an issue all from the same dashboard.

Contact us for pricing

Use Cases

Pharma Portfolio and Project Management, Decision Analysis:

Tower can streamline project management in pharma by generating dashboards that show real-time project timelines, budgets, and resource allocation. AI-driven insights help identify critical dependencies and risks, enabling managers to prioritize projects effectively and make informed, timely decisions for portfolio optimization.

Sales and Marketing:

Tower enables teams to track performance metrics and visualize campaign success through automated dashboards. By analyzing customer demographics, marketing efforts can be optimized, facilitating better decision-making with minimal setup.

Inventory Management:

Tower provides real-time monitoring of stock levels, alerting users to low inventory. In the enterprise version, users can also initiate orders directly from the dashboard, streamlining inventory management processes.

Finance and Operations:

With Tower, teams can quickly generate financial reports and identify operational efficiencies, empowering decision-makers to enhance performance and optimize resource allocation.



CONTACT US

For sales enquiries: sales@codygon.com

For product support: support@codygon.com



Codygon

Codygon Technologies Private Limited

74/II, 'C' Cross Road, Opp. Gate No. 2,
Seepz, Chakala MIDC, Mumbai 400093,
Maharashtra, India

info@codygon.com