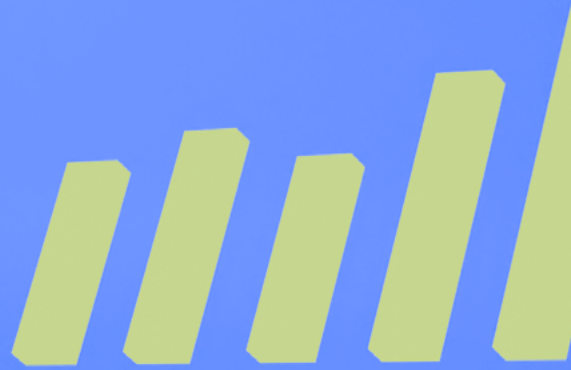




# TOWER



What will you create today?



## PRODUCT OVERVIEW

# Codygon



## Overview

Tower is an AI-powered dashboard generation tool designed to streamline data analysis and visualization for businesses. Tower connects to a wide range of data sources, automating the creation of insightful dashboards with minimal setup.

By harnessing AI, Tower transforms raw data into actionable visuals, helping organizations quickly interpret and act on their data trends.

## Features

### Automated Dashboard Generation

Leveraging AI, Tower quickly analyzes data from connected sources to create tailored dashboards without manual configuration. You can simply establish the necessary data connections, and Tower does the rest.

### Self-service analytics

You can filter the data using the filter panel which is generated automatically based on the data. You can also apply data transformation operations like changing the columns, computing new columns and renaming columns, to name a few, to get different metrics using chat.

### Chat with your chart

If you need insights from the visualizations or want to make changes, you can use the chat functionality to get what you want in an easy-to-use manner. No need to memorize complex formulae.

### Export charts

You can export your charts to common formats - PNG and PDF.

The export options are customizable - you can toggle showing of the filters, the header and the pages.

### Wide Range of Data Sources

Tower supports a variety of data connections - Snowflake, Databricks, SQL databases and more - allowing users to seamlessly connect internal and external data sources to visualize performance, trends, and other critical metrics.

To enable the appropriate connector for your data source, please contact our team.

### Actionable Insights

Beyond visualization, Tower allows users to take immediate actions based on dashboard data. For example, if a chart shows that supply levels are decreasing, the user will be able to place an order directly from the dashboard. This enables timely decision-making without needing to switch between applications.

## Features (Continued)

### View and Edit Modes

For enabling quick operations on all sizes of datasets, we have split our dashboards into 2 modes - View and Edit mode.

#### View Mode:

This mode shows charts generated on the complete dataset. You can view charts and apply filters but not make any changes.

#### Edit Mode:

This mode shows charts generated on a sample of the dataset instead of the entire dataset. This is in line with other enterprise ETL tools that show edit previews and allows to visualize changes quickly.

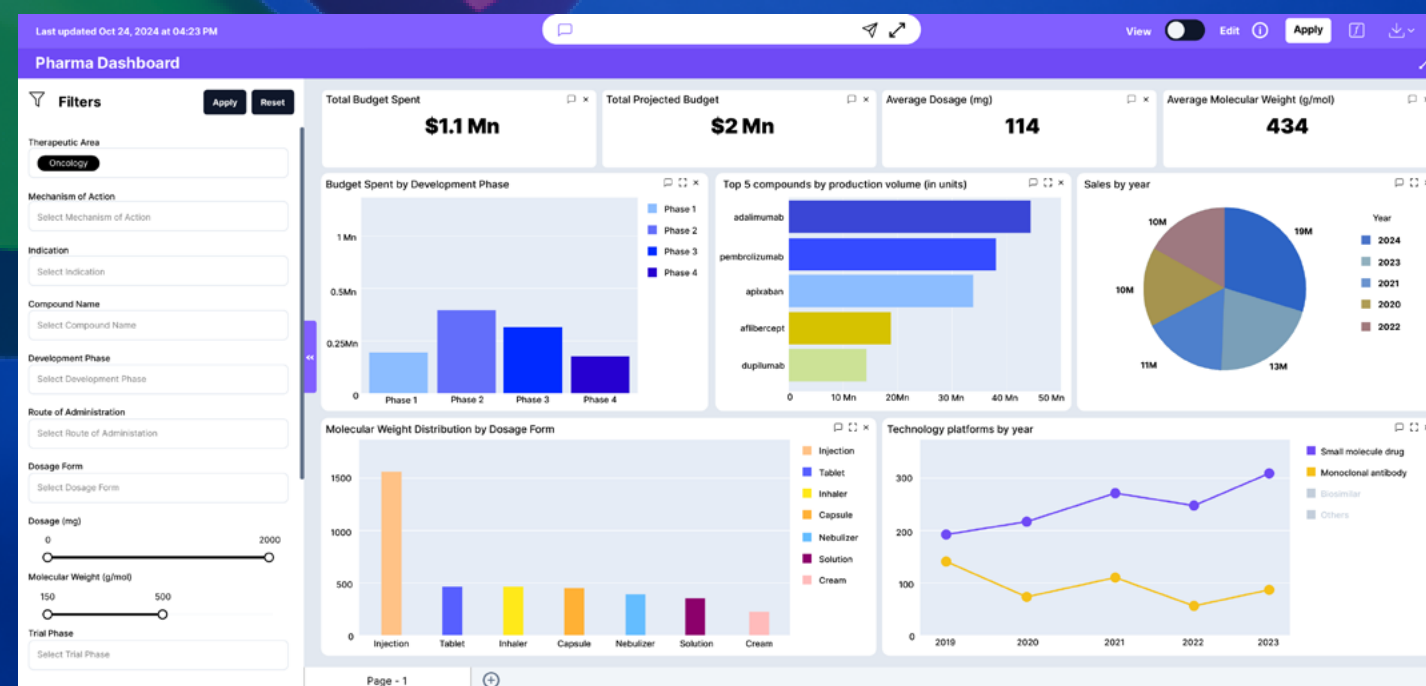
This mode offers customization of visualizations, adding data fields, or altering the dashboard layout to meet specific reporting requirements.

Note that to make the changes permanent, you need to click the Apply button.

Tower will then re-generate the chart with your modifications.

### Data Privacy:

We use robust enterprise-grade cloud solutions from Microsoft, Google and other reputed organizations to keep your data safe and secure. Our AI components are also designed to minimize access to your data. We don't sell your data to third-parties either.



A screenshot of a report generated using Tower (in-app view)



## Pricing

### Free edition:

Tower is available for free for a limited time (as of November 2024). You can create 20 reports per dataset in this version. The data sources supported are Excel and CSV.

### Pro edition:

Connect to databases and unlock higher report generation limits along with automated dashboard refreshes at periodic intervals to keep it updated. Contact us to know more.

### Enterprise edition:

For our enterprise customers, we offer custom solutions to ensure Tower can be connected to enterprise data sources using robust security protocols. We also offer federated login and analytics logging options along with user management controls. This version also allows users to take actions on their system from the dashboard itself. Example: Order an item if the stock quantity shown in a chart is below a threshold. Talk to us to know more.

## Use Cases

### Pharma Portfolio and Project Management, Decision Analysis:

Tower can streamline project management in pharma by generating dashboards that show real-time project timelines, budgets, and resource allocation. AI-driven insights help identify critical dependencies and risks, enabling managers to prioritize projects effectively and make informed, timely decisions for portfolio optimization.

### Sales and Marketing:

Tower enables teams to track performance metrics and visualize campaign success through automated dashboards. By analyzing customer demographics, marketing efforts can be optimized, facilitating better decision-making with minimal setup.

### Inventory Management:

Tower provides real-time monitoring of stock levels, alerting users to low inventory. In the enterprise version, users can also initiate orders directly from the dashboard, streamlining inventory management processes.

### Finance and Operations:

With Tower, teams can quickly generate financial reports and identify operational efficiencies, empowering decision-makers to enhance performance and optimize resource allocation.



## CONTACT US

For sales enquiries: [sales@codygon.com](mailto:sales@codygon.com)

For product support: [support@codygon.com](mailto:support@codygon.com)



# Codygon

### Codygon Technologies Private Limited

74/II, 'C' Cross Road, Opp. Gate No. 2,  
Seepz, Chakala MIDC, Mumbai 400093,  
Maharashtra, India

[info@codygon.com](mailto:info@codygon.com)