

# Cognizant Safe Buildings

Gaining confidence to reopen and manage risks in the post-pandemic business economy

---

Speaker name

Cognizant



# Agenda

1. A pandemic prompts a new global emphasis on health
2. Organizations need to leverage the latest technologies to combat COVID-19 health challenges while using data insights to adapt for the future
3. Introducing Cognizant Safe Buildings
4. Next steps



# A pandemic prompts a new global emphasis on health

2022

On-and-off periods of social distancing will likely be needed into 2022 to ensure that hospitals have capacity for future COVID-19 patients in need of critical care<sup>1</sup>

47%

Nearly half of legal, privacy, and compliance leaders say their top two priorities over the next three months are managing the risks involved with reopening the workplace<sup>4</sup>

77%

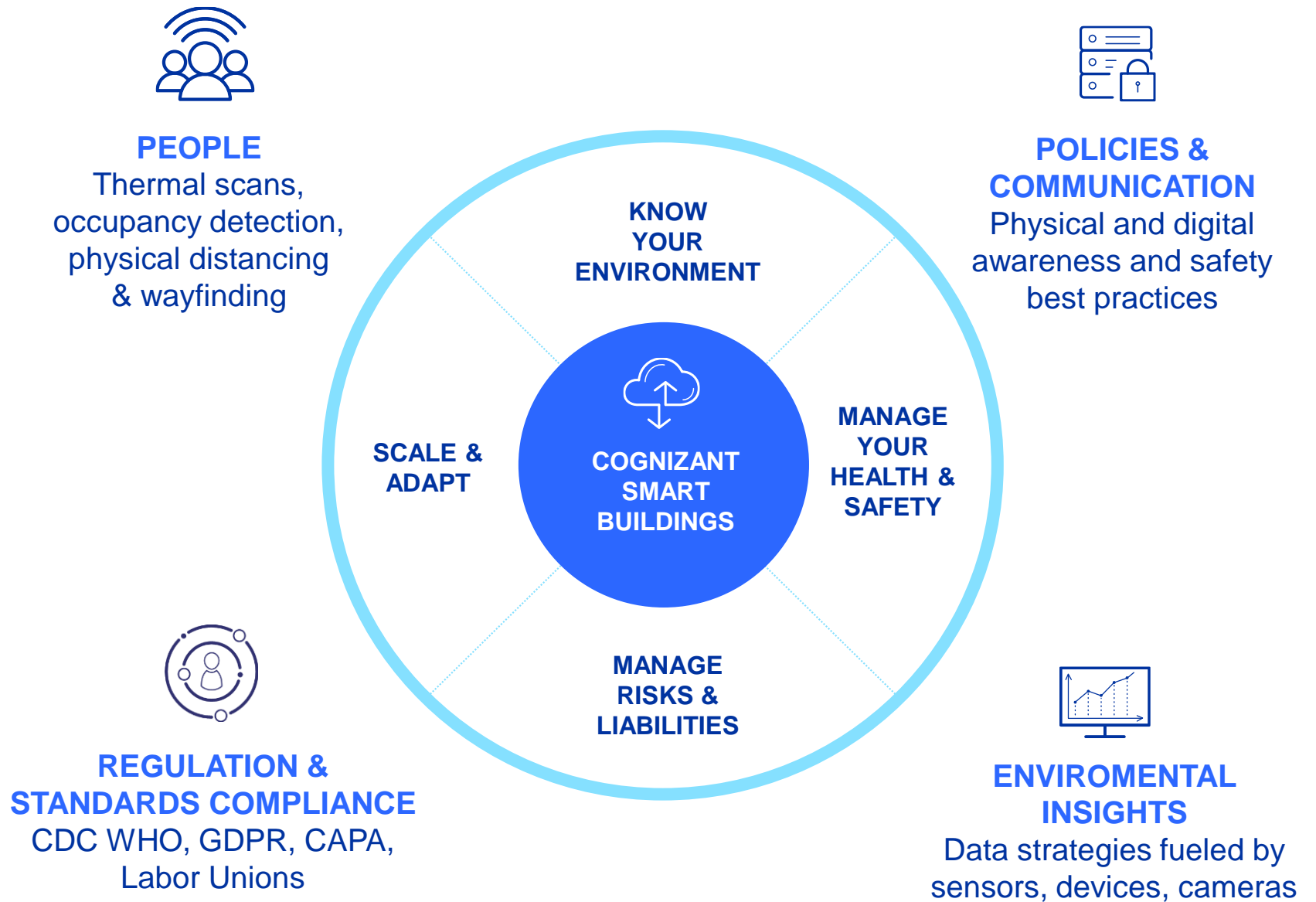
77% of CFOs are planning to change workplace safety measures, according to a PWC COVID-19 CFO Pulse Survey<sup>8</sup>



# Patchwork programs are one strategy



# Transform patchwork programs into cohesive digital strategies and lay the foundation for maintaining safe, responsive buildings



**Cognizant Safe Buildings provides the tools and systems organizations need to create a healthy building environment that eases employee and customer anxiety related to the COVID-19 pandemic and other threats to public health.**



**Inspire trust**



**Manage compliance risk**



**Trace & target**





## Inspire trust

---

Help employees and customers not only be safer but feel safer by demonstrating a commitment to their health and safety.



Reporting tools allow organizations to show employees and customers that they are taking every possible precaution to protect their health.

Establishing a high level of employee trust will be instrumental to ramping back up to pre-pandemic productivity levels – employees and customers will understand you are taking every precaution to keep them safe.

Help create digital and physical awareness to assure people they are safe and encourage best practices.



# Manage compliance risk

---

Know when precautionary guidelines are being violated in real time and identify areas that can be adapted for better distancing, capacity, and "safe" healthy behavior compliance.

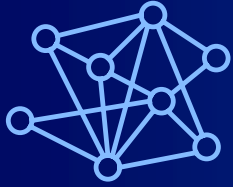


Real-time alerts notify facilities management or other personnel when physical distancing, hand washing, or other best practices are being deviated beyond required procedures

Use self-service reports and historical data to identify areas where physical distancing or occupancy protection rules are frequently broken and how to adapt space and behaviors accordingly.

Auditable reporting tools ensure organizations are ready to show consistent compliance when requested by human resources, employee unions, and other departments or agencies.





## Trace & target

---

Understand who and proximity distance to people in their space, where they have been, and who they have had contact with.



Thermal imaging cameras detect employees or customers who have an elevated temperature and deny them access to facility.

Data collected from sensors and cameras powers dashboards and connects to building access systems for decision-making around admittance and for some re-admittance.

Use smart wrist band technology and HR employee identity access systems for people distancing monitoring and contact tracing.

Customize the way employees are tracked and targeted to fit the unique environment, scale effectively, and maintain data privacy requirements.

# Cloud-enabled safe and healthy building monitoring

Cognizant Safe Buildings leverages Azure for its flexibility and power



Productive



Hybrid



Intelligent

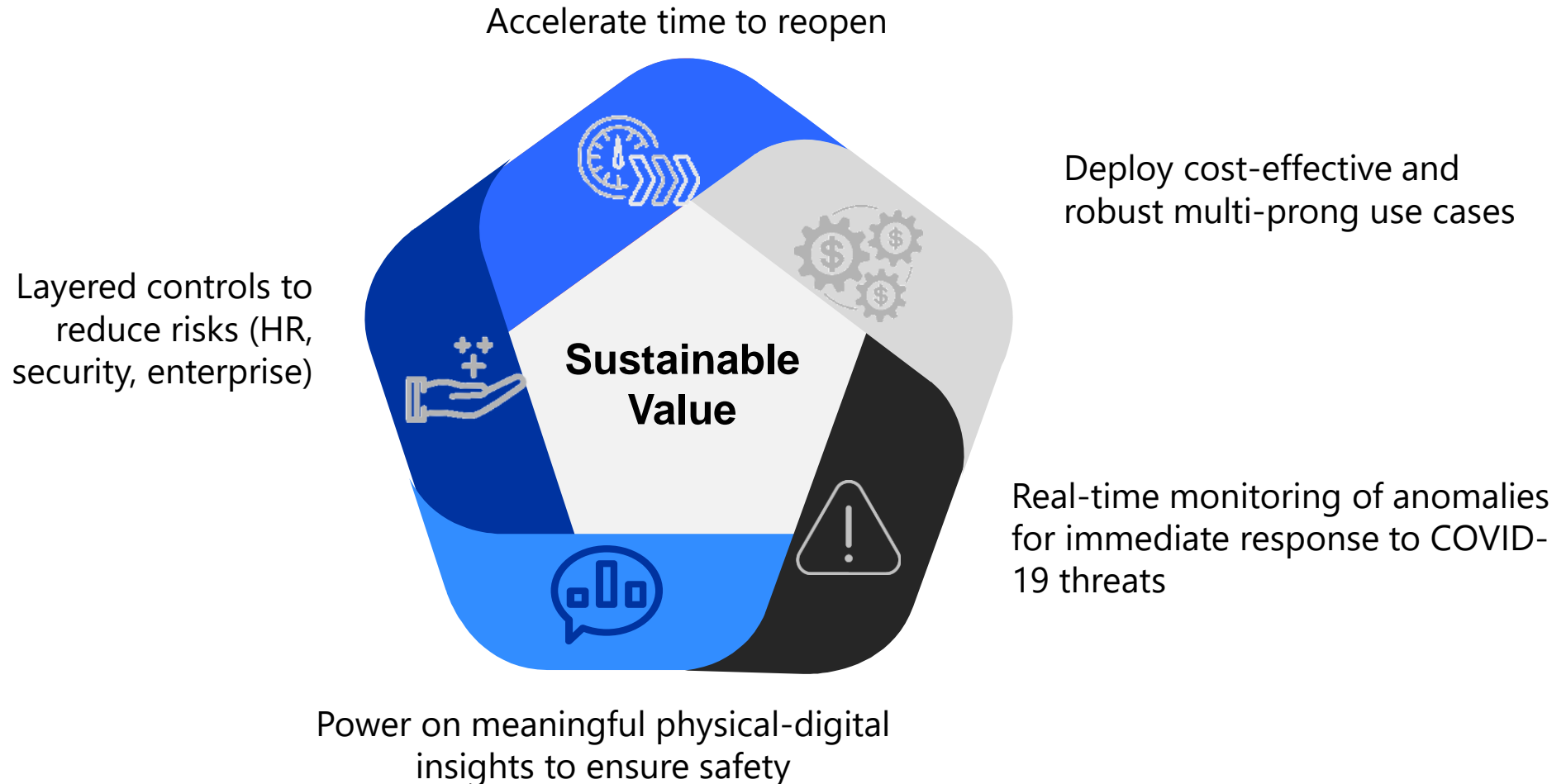


Trusted



# Solution benefits

## Digital accelerant to reopen or adapt



# Four steps to design and adapt safe buildings





# Keeping employees SAFE at a large North American business

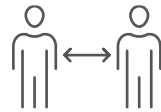
For the global enterprises who is racing to re-open their sprawling offices, stores or factories in several major North American cities, the challenge means keeping their employees safe while ramping up productivity levels now. This is emerging as a perpetual imperative: a solution today needs to be useful into the foreseeable future. It's not just about improving data collection, or consulting on one deployment, it's about re-engineering the physical environment to actively monitor and maintain safety.

With Cognizant Safe Buildings, the organization has access to a comprehensive solution that combines a layering of prevention controls with instrumentation, data analytics, and technology to help make their buildings smarter. This creates safer, healthier working environments that inspire trust and mitigate risk in meaningful ways. Cognizant Safe Buildings is anchored on a proven data platform, overlaid with years of integration expertise across industries that results in faster, adaptable and scalable programs.



## THERMAL TEMPERATURE SCREENING & WELLNESS SURVEY

Thermographic cameras detect elevated temperature in people entering campus buildings. This data powers dashboards and connects to building access systems for decision-making around admittance.



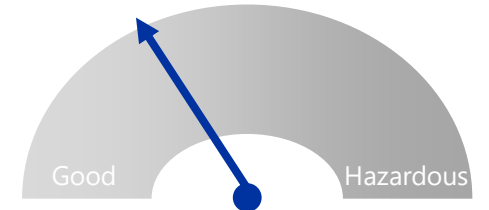
## PHYSICAL DISTANCING TRACKING & CONTACT TRACING

Physical distancing practices are monitored through smart wrist bands that alert employees and employers that distance norms are being maintained or not. Contact tracing capabilities can send alerts of health threats.



## HAND HYGIENE COMPLIANCE

Smart wristbands alert employees, elevating confidence that they are adhering to hygiene compliance standards or showing them a need for improvement.



## AIR QUALITY TRACKING

Monitor air flow, temperature, and humidity in buildings and alert facility managers on poor air quality. Enable reduction of particulate matter and poisonous gases using multiple sensors.



## Next steps

- We'll connect you with the sales team for Cognizant:
- John Enderle  
AVP, Cognizant Digital Business  
[John.Enderle@cognizant.com](mailto:John.Enderle@cognizant.com)
- [IoTMSFT@Cognizant.com](mailto:IoTMSFT@Cognizant.com)
- Learn more about Cognizant Smart, Safe Buildings at:  
[www.cognizant.com/safe-buildings](http://www.cognizant.com/safe-buildings)



**Cognizant**

