

## Overview

Microsoft FastTrack enables customers to deploy and adopt Microsoft 365.

Microsoft 365 customers with eligible subscriptions can use FastTrack at no additional cost for the life of their subscription. As a FastTrack Ready Partner, Comms-care is approved by Microsoft to provide the FastTrack benefit to organisations, whilst working in partnership with the preferred services partner.

## What is Microsoft FastTrack?

A programme that is specifically designed to shorten the deployment and adoption time scales, so that customers can start to realise the value of their investment in software and cloud services quickly.

### Key questions:

- Is the end customer getting the most value from the Microsoft 365 license purchased?
- Is the Microsoft 365 deployment in line with Microsoft recommended best practice?
- Would they benefit from expertise to ensure they are on the right deployment path?

Engage with Comms-care to take advantage of our complimentary FastTrack Service. Customers with eligible subscriptions\* to Microsoft 365 can use FastTrack at no additional cost for the life of their subscription.

\* <https://docs.microsoft.com/en-us/fasttrack/eligibility>

## Service Phases

The FastTrack benefits comprise 3 key project phases with defined outcomes and deliverables for each phase:

- **Envision** – Define a vision for success by identifying and prioritising scenarios and building a success plan
- **Onboard** – Provide guidance on assessments, remediation tasks, core onboarding and service onboarding – with an option for the Microsoft Data Migration team to migrate emails and file data
- **Drive value (Adopt)** – use tools, guides and best practices to execute a success plan and drive user adoption

## Key Benefits

FastTrack provides partners with the framework, methodology and tools to enhance the delivery of low margin commodity services and increase the overall profitability and quality of these engagements.

- **Planning** – Strategy based on recommended Microsoft best practices
- **Assessment** – Develop a remediation checklist using deployment guides
- **Remediation Review** – Reviewing remediation items
- **Success Workshop** – Tools, templates and guides for creation of an action plan
- **Migration** – Migration readiness

## Get in touch

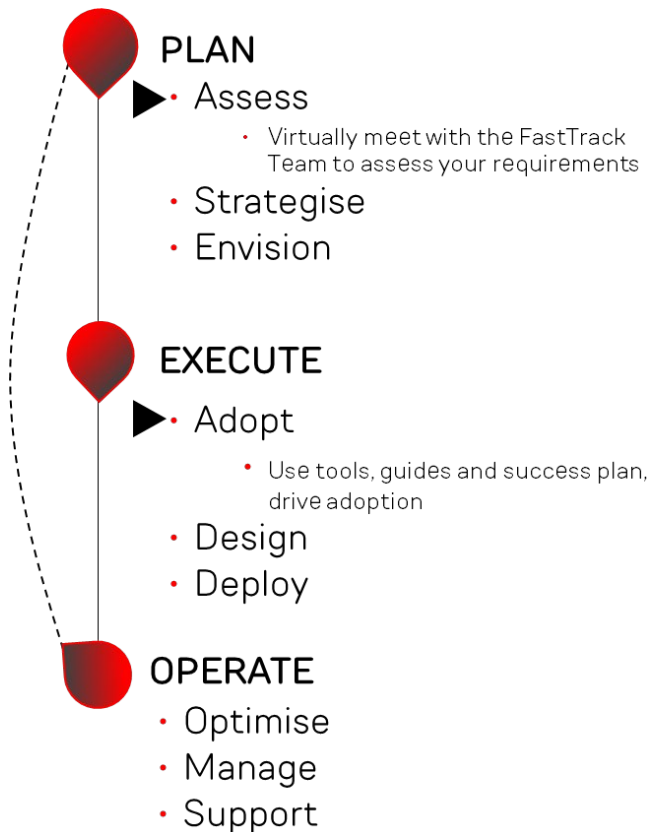
+ 44 (0) 870 264 4303  
enquiries@comms-care.com  
www.comms-care.com

Public1352nvm01

## Purchase, Engage, Benefit

After purchasing Microsoft 365 eligible licenses, engage Comms-care on the lifecycle journey and benefit from certified expertise.

### The Lifecycle Process



### Approach Summary

- Deployment guides
- Technical sessions and workshops
- Checkpoint meetings

### Benefits

- Product investment realised
- Good practice adoption guidance
- Recommended remediation plan

### Typical Outcomes

- Saving one-month onboarding time
- Improving time-to-value by 29% on average from Office 365 suite capabilities
- Reducing costs associated with migrating files and email
- Reducing training costs

Register your interest to start your FastTrack Journey today!

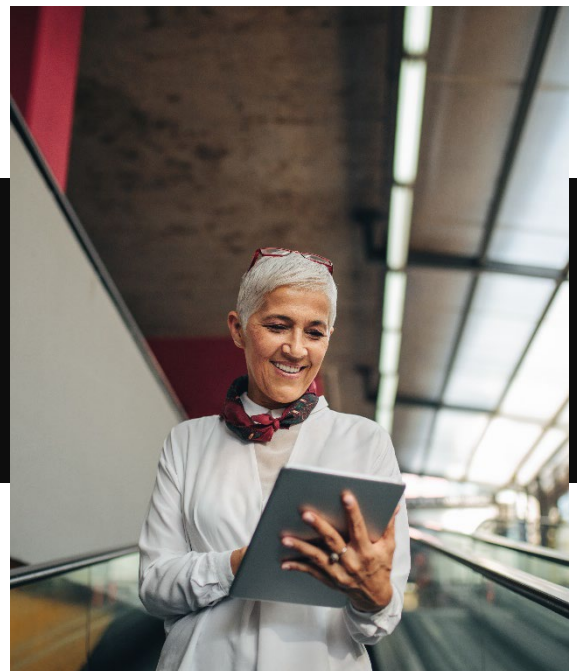
[www.comms-care.com/the-fasttrack-ready-programme](http://www.comms-care.com/the-fasttrack-ready-programme)

#### Qualification Criteria

- Minimum of 150 paid licensing seats, Microsoft 365, Office 365, Windows 11, or EMS licenses, the FastTrack benefit is included at no additional cost for the life of their subscriptions.
- Greater than 500 paid licensing seats, qualify for FastTrack data / email migration benefit.

#### Caveats

- Microsoft charity licensing doesn't qualify for FastTrack, discuss alternative funding options
- FastTrack Migration services only applicable for organisations greater than 500 paid licences



## Get in touch

+ 44 (0) 870 264 4303  
[enquiries@comms-care.com](mailto:enquiries@comms-care.com)  
[www.comms-care.com](http://www.comms-care.com)

Public1352nvm01