



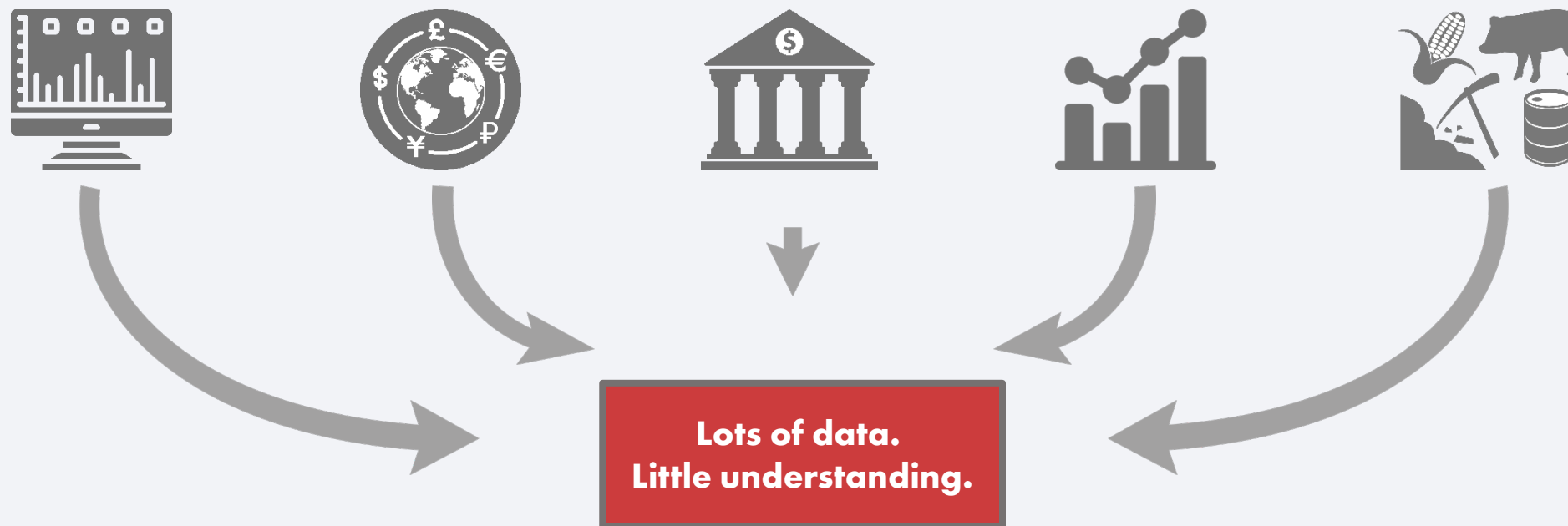
COMPLETE
INTELLIGENCE

Stop Guessing. Start Planning. Succeed.
Industrial-Scale Artificial Intelligence



Problem

Management of uncertainty is the biggest threat to a company's success



Emotions and bias lead to subjective, error-prone conclusions

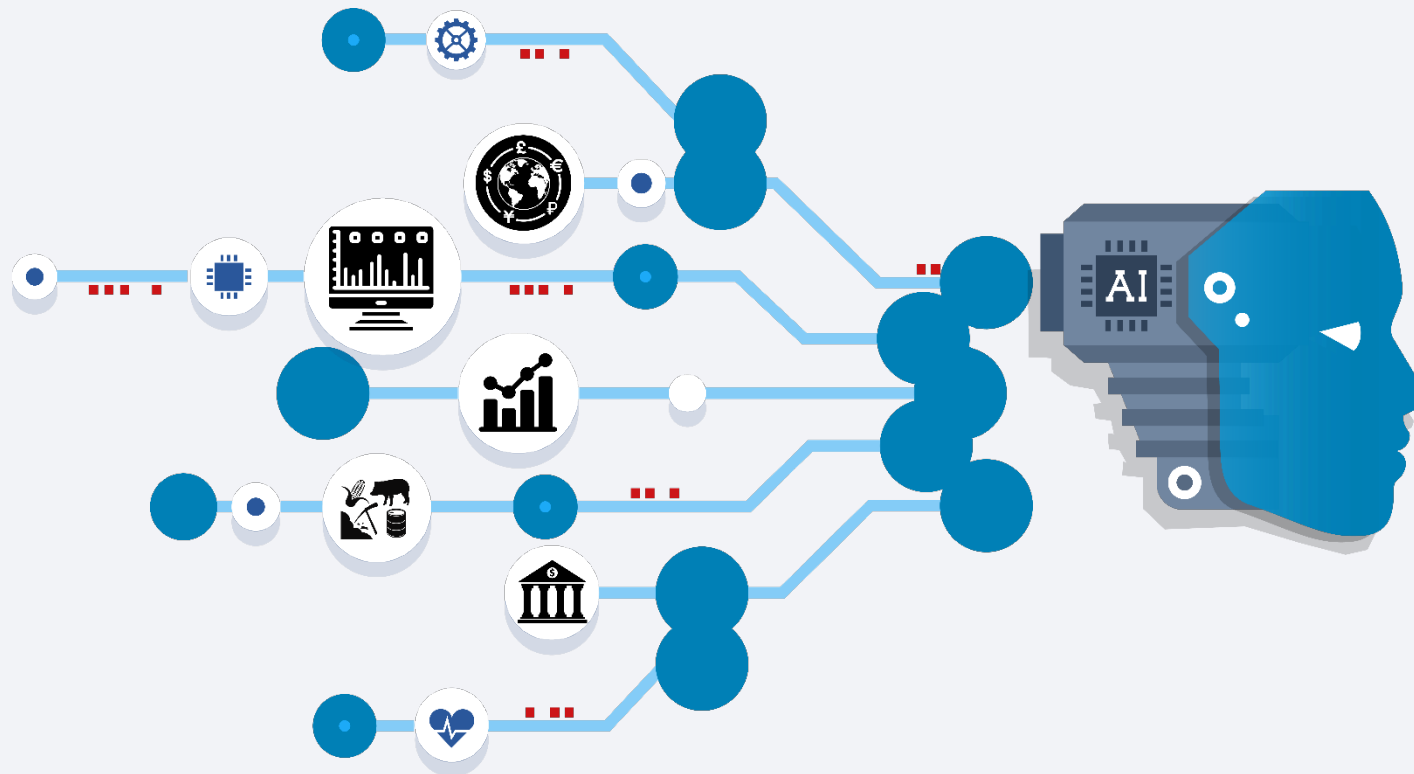
Customized software tools lead to expensive, uncertain outcomes

Spreadsheet hell trips up and overwhelms planning processes

Solution

We provide insight into the future, so companies can plan for success

Using advanced AI, we provide highly accurate cost and revenue forecasts fueled by billions of enterprise and public data points.



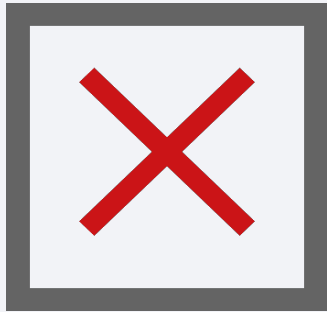
Stop Guessing
Bring certainty to your costs & revenues

Start Planning
Make decisions with confidence & clarity

Succeed
Capture opportunities & develop winning strategies

Client Benefits

We consistently reduce risk for more intelligent decision-making



Typical industry forecasts have double digit error rates and are highly influenced by sentiment and consensus.



On average, the 700+ assets we forecast have 4.6% MAPE (Mean Absolute Percentage Error).



We can consistently reduce client forecasting risk. The result can be millions of dollars in savings.

Our Advantage

What sets Complete Intelligence apart?



COMPREHENSIVE DATA FRAME

- The world's largest integrated global economic platform with more than 15 billion data items
- Unique focus on high-frequency forecasting of enterprise and market data



DATA DRIVEN PROCESS

- Advanced AI with Reinforcement Learning in a multi-phase, competitive analytic process
- Digital DNA mapping of every asset and element



SIMPLE INTERFACE

- Intuitive interface design with easy-to-use features, visualizations and information output
- Easy integration with ERP, SCM, CRM and corporate platforms

CI Futures

Accurate forecasts and data analysis in minutes



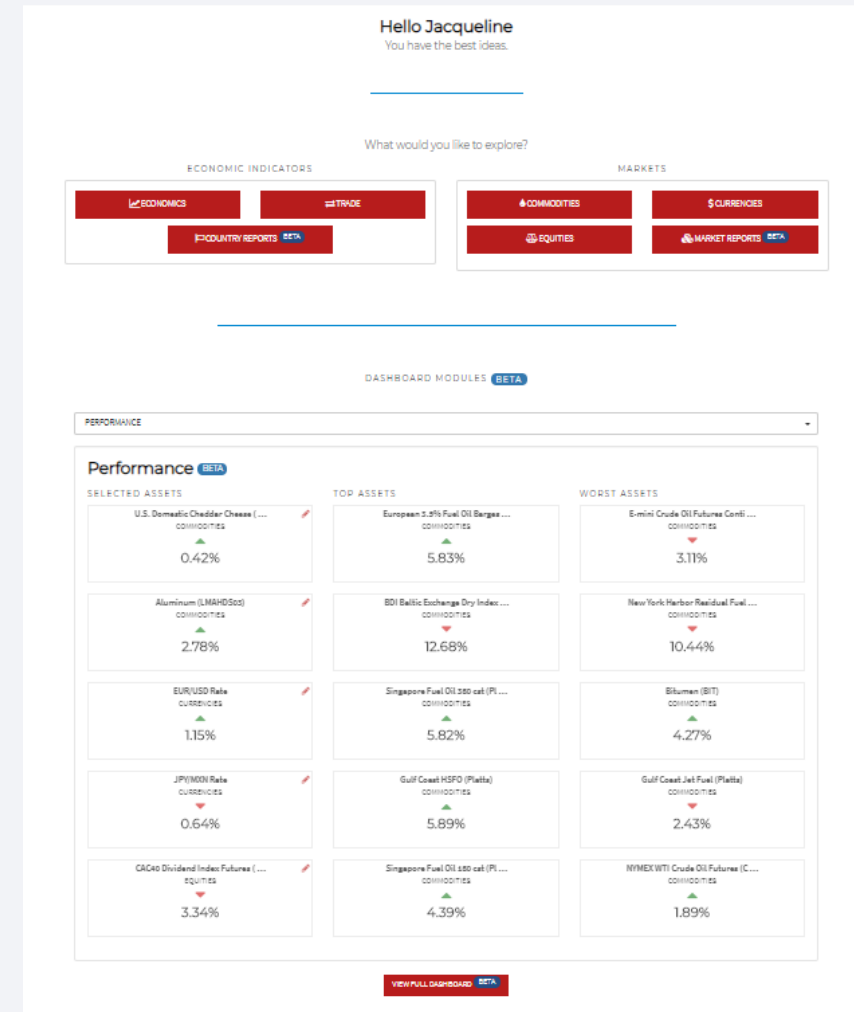
CI Futures provides highly accurate commodity, equity and price forecasts using advanced Artificial Intelligence. One-year horizon forecasts precisely identify likely inflection points and market moves. Each forecast contains a wealth of detailed information including statistical confidence levels and correlated assets.

- Timely, accurate price forecasts
- Quickly download and share forecast data
- Build custom reports in minutes

We have intentionally designed an integrated global model to ensure that actions in one market, country or sector of the economy are reflected elsewhere in markets, industries and the global economy. We test more than 1 million functions against the historical data series in each forecasted asset.

Key Features:

- 97% of forecasts show <10% error
- 700+ currency, commodity and equity index market forecasts
- 450 economic outlook reports
- 1000+ trade forecast reports
- Largest global trade database
- Over 15 billion data points
- Over 1,400 industries
- Data covering over 100 countries



CostFlow™

High-context information for high-impact planning



CostFlow™ allows procurement teams to easily visualize their data, make predictions, and plan accordingly all in the context of a global economy. CostFlow™ enables enterprises to utilize their existing data sets to measure performance and accurately assess risk on a frequent basis.

- Enact real-time transparency along the entire supply chain
- Share internal and external information quickly from a single platform
- Test changes in cost scenarios and measure impact in a rapid manner
- Visualize budget and budget variance
- Anticipate market changes more accurately, resulting in better strategies
- Designed to integrate with Microsoft, Oracle and SAP ERP and others as well as major cloud platforms (Azure, AWS, etc).

Key Features:

- Advanced Price Planning Databases
- Should-Cost Modelling
- Budget Variance Calculations
- Real-time Visibility of All Spend
- Timely, Accurate Cost Forecasts
- Collaborative and Intuitive Cloud-based Platform

Industrial

Electric Control Valve

Select BomLevel

Manage Products

Jun 2019 - Mar 2020

Electric Control Valve: Bill of Materials

Bill of Materials | Data Table | Chart

Data For Dec 2019

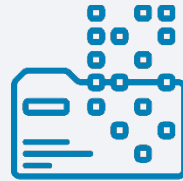
BOM Level	Part Number	Element Description	Parent	Quantity	Unit of measure	Currency	Unit cost	Total cost	% of BOM
1	5	Electric Control Valve		1.00	Each	USD	7.71	7.71	100.00%
2	5.1	Solenoid	Electric Control Valve	1.00	Each	USD	1.79	1.79	23.22%
3	5.1.1	Solenoid Handle	Solenoid	1.00	Each	USD	0.96	0.96	12.45%
3	5.1.2	Solenoid Repair Kit	Solenoid	1.00	Each	USD	0.83	0.83	10.77%
4	5.1.2.1	Solenoid O-Ring	Solenoid Repair Kit	1.00	Each	USD	0.31	0.31	4.02%
4	5.1.2.2	Solenoid Filter	Solenoid Repair Kit	1.00	Each	USD	0.52	0.52	6.74%
2	5.2	Bonnet Assembly	Electric Control Valve	1.00	Each	USD	2.09	2.09	27.11%
3	5.2.1	Flow Control Handle	Bonnet Assembly	1.00	Each	USD	0.19	0.19	2.46%
3	5.2.2	Bonnet	Bonnet Assembly	1.00	Each	USD	0.72	0.72	9.34%
3	5.2.3	External Bleed Screw	Bonnet Assembly	1.00	Each	USD	0.31	0.31	4.02%
3	5.2.4	Stem	Bonnet Assembly	1.00	Each	USD	0.32	0.32	4.15%
3	5.2.5	Stem O-Ring	Bonnet Assembly	1.00	Each	USD	0.02	0.02	0.26%
3	5.2.6	Piston	Bonnet Assembly	1.00	Each	USD	0.51	0.51	6.61%
3	5.2.7	Piston O-Ring	Bonnet Assembly	1.00	Each	USD	0.02	0.02	0.26%
2	5.3	Diaphragm Repair Kit	Electric Control Valve	1.00	Each	USD	1.39	1.39	18.03%
3	5.3.1	Bonnet screws	Diaphragm Repair Kit	6.00	Each	USD	0.01	0.06	0.78%
3	5.3.2	Diaphragm spring	Diaphragm Repair Kit	1.00	Each	USD	0.28	0.28	3.63%
3	5.3.3	Diaphragm Assembly w/ Filter	Diaphragm Repair Kit	1.00	Each	USD	1.05	1.05	13.62%
2	5.4	Plunger/Cap & Cover Assembly	Electric Control Valve	1.00	Each	USD	1.41	1.41	18.29%
3	5.4.1	Cap & Cover	Plunger/Cap & Cover Assembly	1.00	Each	USD	1.06	1.06	13.75%
3	5.4.2	Plunger	Plunger/Cap & Cover Assembly	1.00	Each	USD	0.31	0.31	4.02%
3	5.4.3	Plunger Gasket	Plunger/Cap & Cover Assembly	1.00	Each	USD	0.02	0.02	0.26%

The Engine

The Global Cognitive System is at the heart of our process

DATASCAN

Intelligent screening, repair and validation of client enterprise data as well as for market, trade, and economic data ensure a robust and reliable dataset. *Good data lead to good results.*



REINFORCEMENT LEARNING

Reinforcement learning provides feedback for smart data sourcing, meta reasoning and analytic enhancements to achieve the best outcome possible. *We're advancing towards contextual AI.*



GLOBAL COGNITIVE SYSTEM



KNOWLEDGE BASE

Containing billions of datapoints and millions of algorithmic parameters, this repository contains an expanding record of data and analytics. *We define the digital DNA of our dataset.*

INSIGHT FACTORY

Multi-layered, multi-dimensional analyses leverage our Knowledge Base to achieve unparalleled levels of accuracy in our predictive analytics. *Hidden market trends and opportunities are revealed.*



How It Works

What we do in the Complete Intelligence process



RECEIVE

your enterprise data



ANALYZE

using our Global
Cognitive System™



CONTEXTUALIZE

for meaningful and
useful results

**We give our clients
the power to**

- ✓ recognize market movements, spot inflection points and reveal opportunities
- ✓ capture cost savings, enhance revenues and formulate new strategies
- ✓ manage sales, control margins and protect supply chain integrity



COMPLETE
INTELLIGENCE

Request a demo at www.completeintel.com