

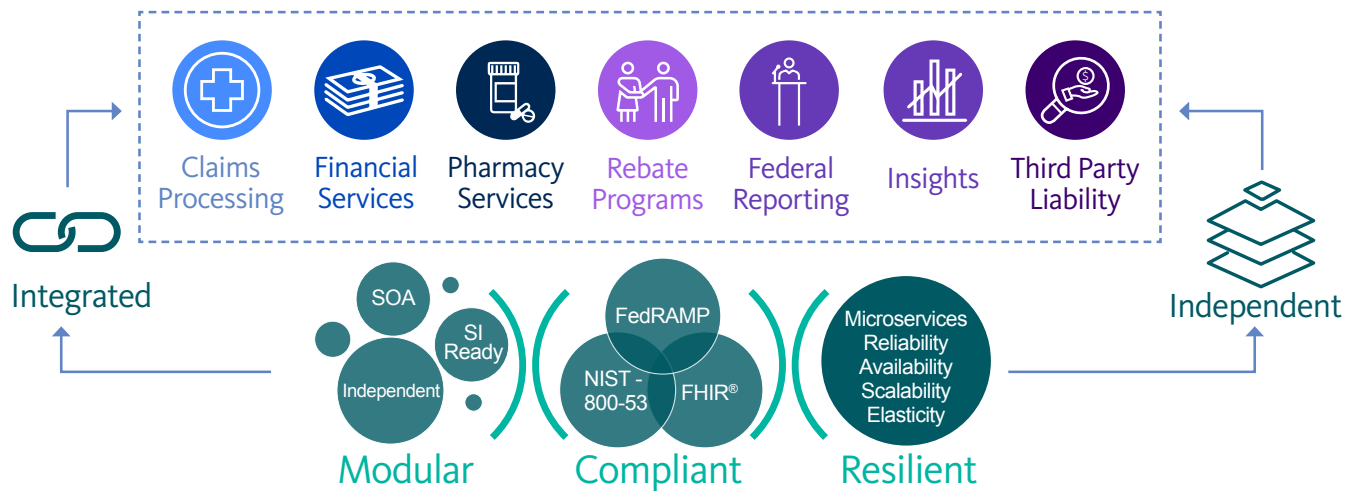
Conduent Medicaid Suite (CMdS): Moving Medicaid Forward

Automating processes, exchanging information and enabling people



Conduent Medicaid Suite (CMdS) is a production-ready application portfolio that supports states' migration from a legacy MMIS to a digital, interoperable, and scalable enterprise. CMdS is a modular solution that enables program optimization and is delivered through Software as a Service (SaaS). It fully supports MITA goals and aligns with CMS' Seven Standards and Conditions. This comprehensive set of functional modules is fully configurable and is built on highly scalable technical architecture that will allow states to consolidate healthcare processing and payments while supporting the unique benefits and financial management requirements of each program. CMdS is a federally compliant system that provides an assurance of applicable security standards — all backed by 49 years of Medicaid experience.

Each of the CMdS modules perform critical functions to realize the state's modularity vision, efficiently operating together as well as integrating seamlessly in the MES multi-vendor ecosystem.



CMdS Claims: supports simple and complex pricing methodologies using configurable program and benefit plan capabilities with a powerful COTS-based rules engine to accurately and quickly process claims.

CMdS Financial: provides accounts payable, accounts receivable, and financial management solutions. Eliminating the need to piece together information from multiple payment and recovery systems.

CMdS EDI: is a HIPAA/HITECH compliant and ENHAC accredited clearinghouse specializing in the ANSI 5010 X12N transaction set translating and delivering in excess of half a billion healthcare transactions annually.

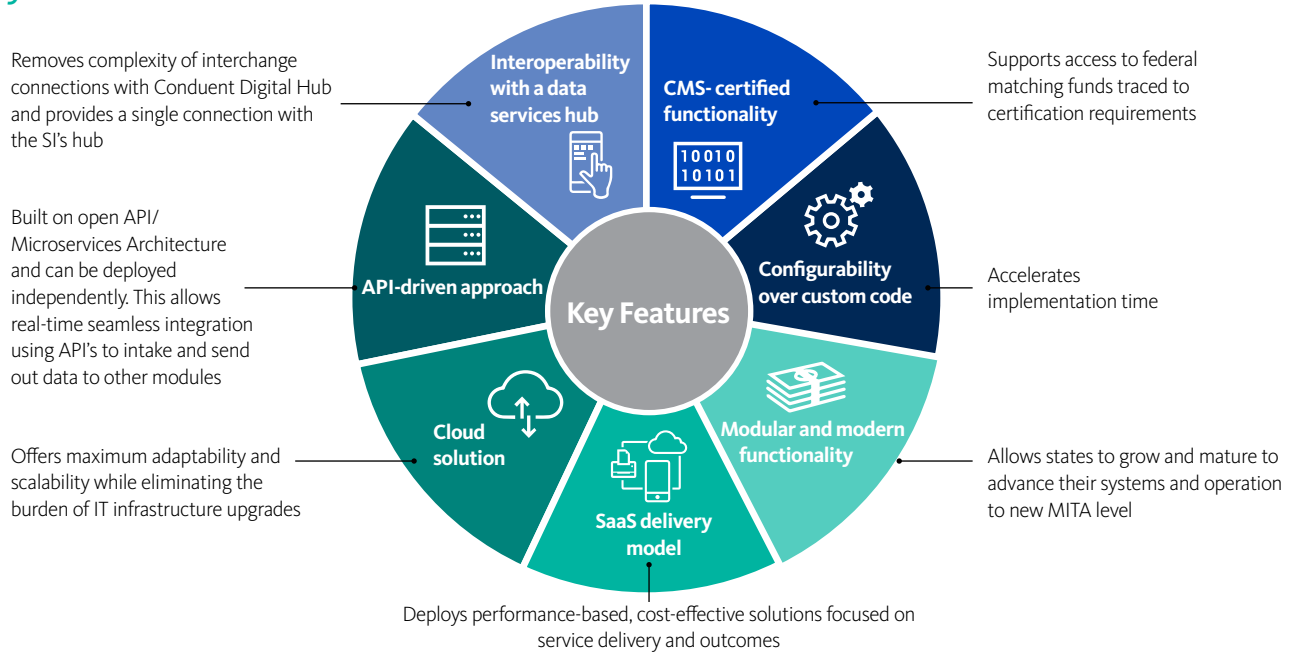
CMdS Flexible Rx System: offers real-time comprehensive NCPDP-compliant claims adjudication functionality that automatically evaluates eligibility, drug coverage, benefit limitations and pharmacy network enrollment prior to dispensing, eliminating conflicts, and inappropriate use.

CMdS Federal Reporting: offers comprehensive reporting functionality to meet federal reporting requirements. It has flexible, user-defined capabilities with the ability to perform functions ranging from standard reports to advanced ad hoc queries and analytics.

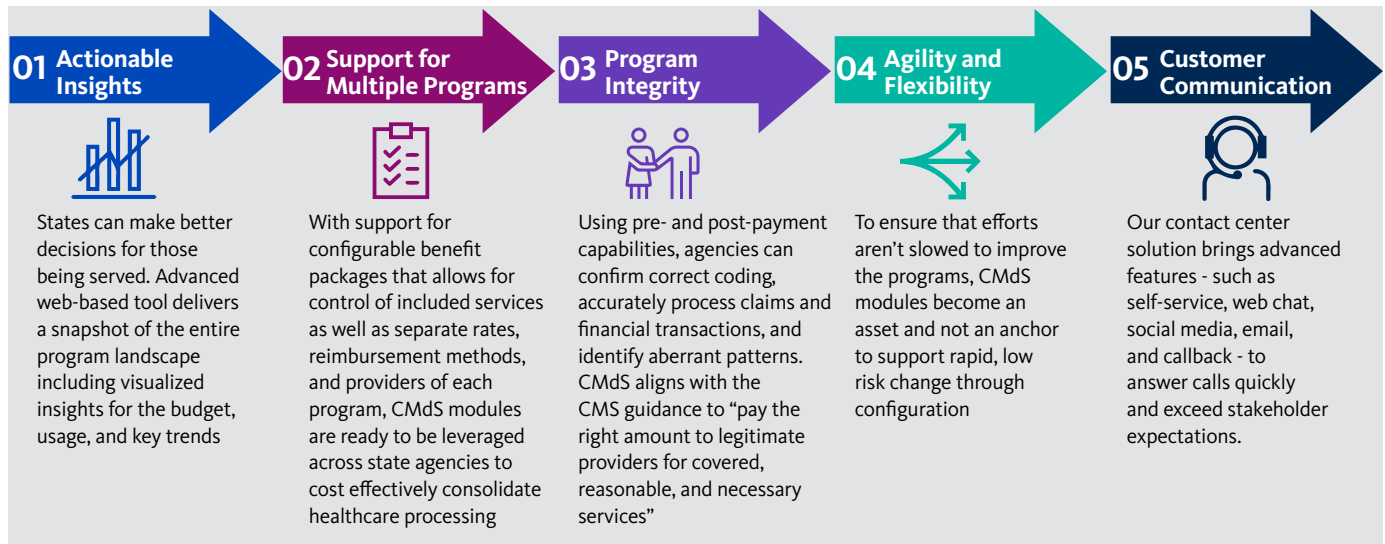
CMdS Insights: provides program insights, trends and actionable knowledge to support Medicaid programs' transformation, fiscal management, fraud, waste and abuse avoidance and overall program quality.

CMdS TPL: uses data matching for the recovery of funds to the limit of the legal liability from insurance companies, another person, or any other entity that is liable for health care costs. It includes health insurance benefits, Medicare recoveries, HIPP, casualty/accident claims, product liability claims, medical malpractice, worker's compensation claims, and estate recovery to ensure Medicaid is the payer of last resort.

Key Features



Value delivered by CMdS



Your trusted partner

With Conduent, you have a long-term, low-risk and high-reward partner that brings a broad and deep knowledge of all the required facets of administering successful government healthcare programs. Conduent possesses a profound understanding of Medicaid operations, stakeholder needs, intricacies of supporting technology infrastructure, architecture and integration along with policy and regulatory expertise.

For more information please call **(844) ONE-CNDT**, email- govhealthcare@conduent.com, or visit [here](#)

