

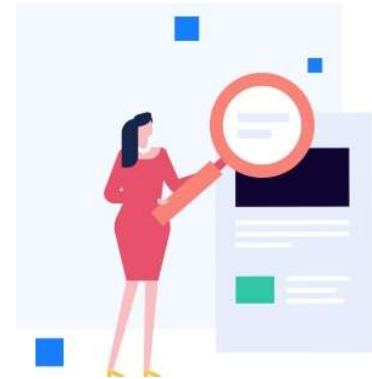
Work more safely and efficiently with multi-factor authentication and single sign-on

## WHAT

Would you like to make your user accounts more secure? And at the same time ensure that employees can log in more easily? Well, you can! With the help of our Identity Security solution, Multi-Factor Authentication (MFA) and Single Sign-On (SSO) are set up within your organization.

MFA ensures that users who log in do **not only use a password, but also have to provide an additional form of authentication**. This ensures that the person who logs in really is who he or she says he or she is: a must for every organization when it comes to cybersecurity.

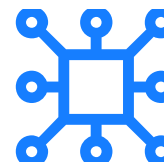
SSO, on the other hand, ensures that employees **only need to log in once to access all applications** that support SSO.



## Key points



Improved security of user accounts  
(MFA)



Automatic secure login (SSO)

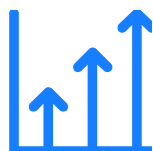
## WHY

Cybercrime is still a major threat. Thanks to MFA, outsiders cannot get into the system and your system immediately becomes much **safer**.

Of course, the required attention is also paid to **user-friendliness**. SSO not only makes it easier for users to log on, but it also provides additional **security**.



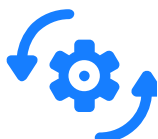
## 5 benefits



Increased security in your organization



Risk of identity theft significantly decreases



Automatic login



Shared accounts are configured automatically



User-friendly

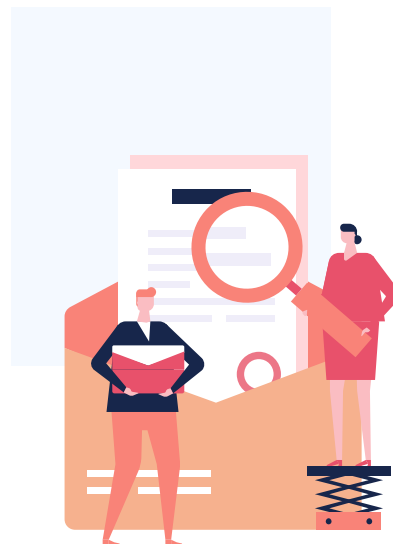


## HOW

Azure Active Directory's multi-factor authentication works by requiring two of the following authentication methods: something you know (password), something you have (phone, key) and something you are (fingerprint, face scan). This ensures that there is always at least one option that is very difficult to fraudulently replicate, thus making your user accounts more secure.

With SSO, the user only has to log in once, after which the credentials are remembered. The credentials are used in other applications, allowing the user to log in automatically. This way, the user does not have to do this over and over and can focus on his/her core tasks.

ConXioN configures licenses, gives a demo and helps to set up these applications and the exchanges with the third-party applications. If required, we also provide a manual and internal communication.



## Deliverables



**License configuration**



**Demo**



**Optional: manual and communication**

## Contact us

for more information.



+32 56 73 11 21



info@conxion.be



Hoogstraat 134, BE-8540 Deerlijk



www.conxion.be