



GHAS Adoption Program

Azure Accelerate



What is GitHub Advanced Security?

GitHub Advanced Security (GHAS) is a suite of application security features designed to help developers embed security into their GitHub workflow.



Code Scanning

- analyzes the code in a GitHub repository to find security vulnerabilities and coding errors.

Secret Scanning

- detects the accidental exposure of sensitive information such as API keys, tokens, and other credentials.

Dependency Review

- helps you understand your software dependencies and the security implications of introducing new ones.

Coveros GHAS Solutions

Azure Accelerate-eligible engagements to build intent & drive adoption



GHAS Developer Training

- Introductory training on GHAS capabilities
- Advanced training to customize GHAS

GHAS Getting Started Bundle

- Training + coaching to get teams rolling with GHAS (and Copilot for remediation)

GHAS Adoption Program

- Comprehensive program to plan, pilot, and rollout GHAS across an enterprise
- Includes role-based training, team coaching, office hours, implementation, migration from competing products

GHAS Automated Governance

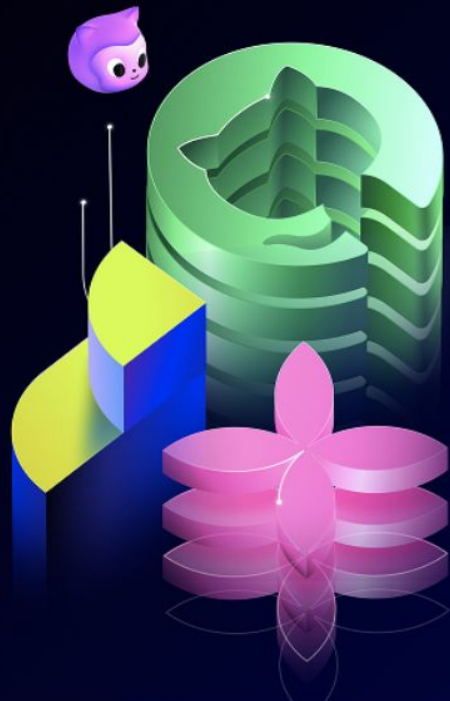
- Integration of GHAS results into compliance process
- Leverages GitHub technology partner Fianu Labs

GHAS Certification and Expert Training Program

- Full Certification Expert and Corporate Training
- Enablement and Acceleration of GHAS + GHE



Security & Compliance Toolkit



GHAS Service Bundles

Planning, Coaching, Training and Implementation

Coveros packages GitHub Copilot + GHAS into a clear, budget-aligned proposal that maps to Azure Accelerate, reducing cost of adoption, and making it easy for customers to deploy GHAS and Secrets Scanning.

Our GHAS offer ensures smooth adoption, solves compliance and security pain and is aligned with approved funding motions — enabling customers to adopt and providing internal capability to scale.

Compliance Drivers

Security and compliance are now development's problem, too

Regulatory Expansion down-market

- SOX, HIPAA, GDPR, NIST, FedRAMP, ISO, SOC2

Audit Pressure

- Code provenance & SBOM requirements in compliance evidence

Threat Landscape

- AI-powered attacks → secure-by-design mandates

Developer Accountability

- Shift-left security enforced in SLAs/contracts

From Compliance Burden to Competitive Advantage

GitHub Advanced Security

- CodeQL & Secret Scanning,
 - Dependency Review
- Security Policy as Code

GitHub Copilot

- Secure-by-Default
Suggestions,
- Policy-Aware AI, Speed +

Compliance



Azure Accelerate Program

Azure Accelerate is Microsoft's flagship partner service funding program for GitHub, and Microsoft Azure AI services. It's goal is **enabling customers** to get the most out of their investment. Eligibility and funding amount is based on an annualized **Azure Consumed Revenue (ACR)** calculation.

Azure Accelerate can support multiple workloads, including ADO Migrations, Copilot, GHE, GHAS and Azure services, including EntraID to provide structure, best practice guidance, and internal capability.

Service Stage	Description of Service	Qualification	Funding	Deliverables
Assess, Enable and Plan	Current state, goal and deployment plan plus training/enablement service or PoV, PoC or Solution Architecture	Planned Solution Adoption	\$6.5k-\$25k	<ul style="list-style-type: none">• Assessment, Roadmap & Architecture• Coveros Enablement Service• Adoption & Funding Roadmap
Architect, Build and Deploy	Architect/Review or Build Landing Zone supporting iterative adoption, or Deploy and Activate a solution with an adoption target to qualify for program funding	Annualized ACR Calculation	\$6.5k-\$75k	<ul style="list-style-type: none">• POC, Landing Zone and Adoption Plan• Solution Deployment with ACR target• Azure AI, AKS, all GitHub Solutions
Adopt, Expand and Optimize	Review, Optimize and Scale existing environment driving new workload adoption or expanding current workload	Annualized ACR Calculation	\$6.5k- \$75k	<ul style="list-style-type: none">• Expanded adoption of existing solution or new workload with defined target• Optimized environment supporting ongoing GitHub and Azure AI on scale