

Fiix CMMS Connection

Overview



Configuration is provided for establishing connections with the **Fiix CMMS** service. The configuration is used in the **REST Connection Manager**.

Setup

Press [🔗](#) icon to get more information about the connection parameters.

Obtain data

Use **REST Source** component to get data from service resource.

Insert data

Use **REST Destination** component to insert data into service resource.

Quick Start

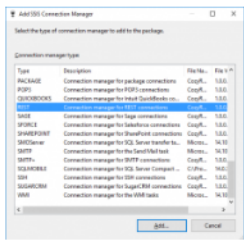
Establish connection

★★★★★

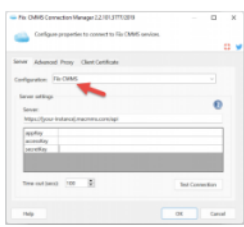
No votes yet

In this guide, we will show you step-by-step how to create a connection to **Fiix CMMS** REST API using COZYROC's REST Connection Manager.

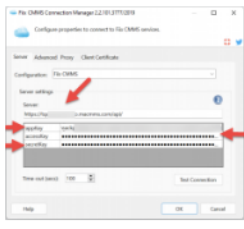
Step 1: Run **Visual Studio** under **Administrator account**. Right click on **Connection managers** Tab and **Select New Connection**. In **Add SSIS Connection Manager** scroll down and select **Connection managers for REST Connection** and click **Add**.



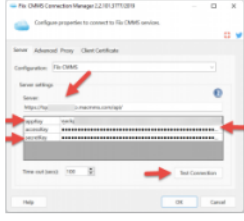
Step 2: From the drop-down menu **Configuration** select **Fiix CMMS**.



Step 3: Set **[your-instance]** to the desired instance in the Server host parameter. Then provide values for parameters **apikey**, **accessKey** and **secretKey** in the grid below.



Step 4: Click **Test Connection** to test your connection.



Congratulations! You have now established a connection to your **Fiix CMMS** instance.

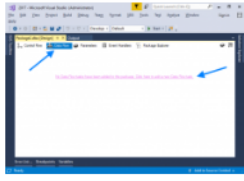
Consume data from service

★★★★★

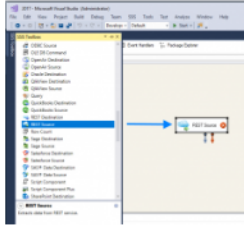
No votes yet

This guide demonstrates how to read data from the **Fiix CMMS** service resource using the COZYROC REST Source component.

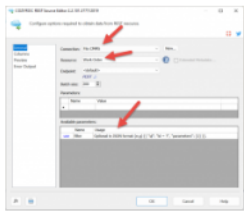
Step 1: Select an existing "Data Flow task" or create a new "Data Flow Task".



Step 2: Open **SSIS Toolbox** and drag and drop COZYROC **REST Source** component.

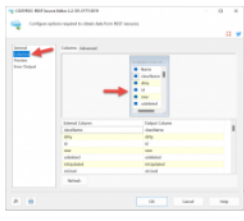


Step 3: Double click on the **REST Source** component and select **Fiix CMMS** connection from the combo. Then, select the desired **Fiix CMMS** resource from the second dropdown.

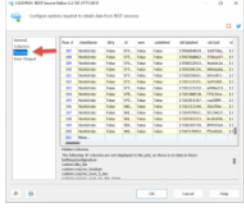


Optionally, you can add extra parameters in the grid below if needed.

Step 4: Click on the **Columns** tab and select **Fiix CMMS** resource columns you want to read.



Step 5: Click **Preview** to verify that all necessary resource columns are included.



Congratulations! You've successfully learned how to read data from the **Fiix CMMS** service.

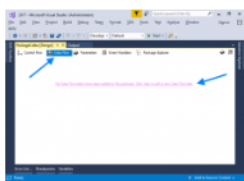
Push data to service

★★★★★

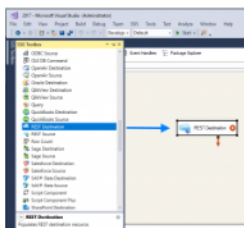
No votes yet

This guide explains how to write data to the **Fiix CMMS** service resource using the COZYROC REST Destination component.

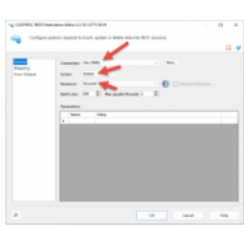
Step 1: Select an existing "Data Flow task" or create a new "Data Flow Task".



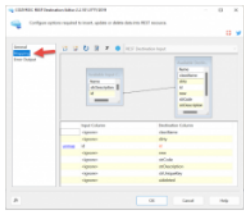
Step 2: Open the "SSIS Toolbox" and drag and drop COZYROC "REST Destination" component.



Step 3: Double click on the **REST Destination** component and select **Fiix CMMS** connection from the combo. Also, select resource action and **Fiix CMMS** resource you want to work on.



Step 4: Click on the "Mapping" tab and map the input columns for the process you are configuring.



If you want to provide input for other resource composite objects, change the input above and map the columns.

Done. You have now learned how to write data into the **Fiix CMMS** resource.

[🔗 Contribute](#)

Configuration

- Service
- Authentication
- Resources
- Referenced Resource Definitions
- Referenced Fields Definitions
- Scripts

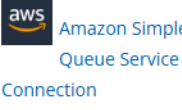
Knowledge Base

What's New

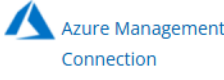
2.3

- New: Introduced connection.

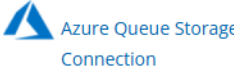
Related documentation



Amazon Simple Queue Service Connection



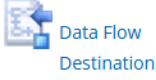
Azure Management Connection



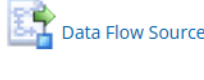
Azure Queue Storage Connection



Azure Table Connection



Data Flow Destination



Data Flow Source



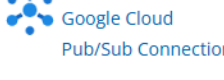
Deliverect Connection



Derived Column



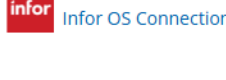
DocuSign Connection



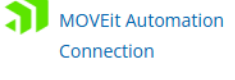
Google Cloud Pub/Sub Connection



Google People Connection



Infor OS Connection



MOVEit Automation Connection



PowerShell Task



PTC Windchill Connection



UIPath Connection

[What's New](#)



COZYROC SSIS+ Components Suite is free for testing in your development environment.
A licensed version can be deployed on-premises, on Azure-SSIS IR and on COZYROC Cloud.

[Download Now!](#)

Newsletter

Join VIP subscribers getting **Exclusive** COZYROC SSIS+ Library updates, private Q&A and more.

Email Address

No spam, ever. Just great stuff!

[Join](#)

Contact Us

Address: 4350 Lassiter at North Hills Ave, Raleigh, NC 27609, United States

Phone: +1 (919) 249-7421

Pre-Sales: Schedule a call

Support: Help Center

Follow Us



Support

- [Help Center](#)
- [Getting Started](#)
- [Licensing](#)
- [Tutorials](#)
- [Forum](#)