

Google Calendar Connection

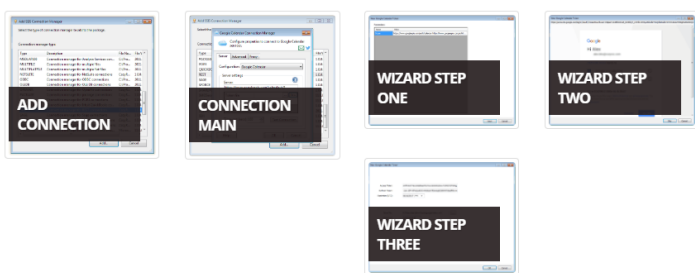
Overview

31 Configuration is provided for establishing connections with the Google Calendar service. The configuration is used in the REST Connection Manager.

- Overview
- Demonstration
- Configuration
- Knowledge Base
- What's New

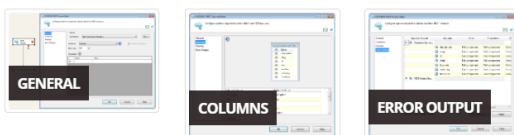
Setup

Press icon to get more information about the connection parameters.



Obtain data

Use REST Source component to get data from service resource.



Insert data

Use REST Destination component to insert data into service resource.



Demonstration



Now Playing

Basics

Configuration

- Service
- Authentication
- Resources
- Referenced Resource Definitions
- Referenced Fields Definitions
- Scripts

Knowledge Base

Where can I find the documentation for the Google Calendar Connection?

See more...

What's New

- 1.7
 - New: Introduced connection.

Related documentation

- Google Admin Connection
- Google Analytics Connection
- Google AppSheet Connection
- Google BigQuery Connection
- Google Cloud Monitoring Connection
- Google Drive Connection
- Google Search Console Connection
- Google Sheets Connection
- Google Tasks Connection



COZYROC SSIS+ Components Suite is free for testing in your development environment. A licensed version can be deployed on-premises, on Azure-SSIS IR and on COZYROC Cloud.

Download Now!

Newsletter

Join VIP subscribers getting Exclusive COZYROC SSIS+ Library updates, private Q&A and more.

No spam, ever. Just great stuff!

Join

Contact Us

- Address: 4350 Lassiter at North Hills Ave, Raleigh, NC 27609, United States
- Phone: +1 (919) 249-7421
- Pre-Sales: Schedule a call
- Support: Help Center

Follow Us



Support

- Help Center
- Getting Started
- Licensing
- Tutorials
- Forum