

Google Sheets Connection

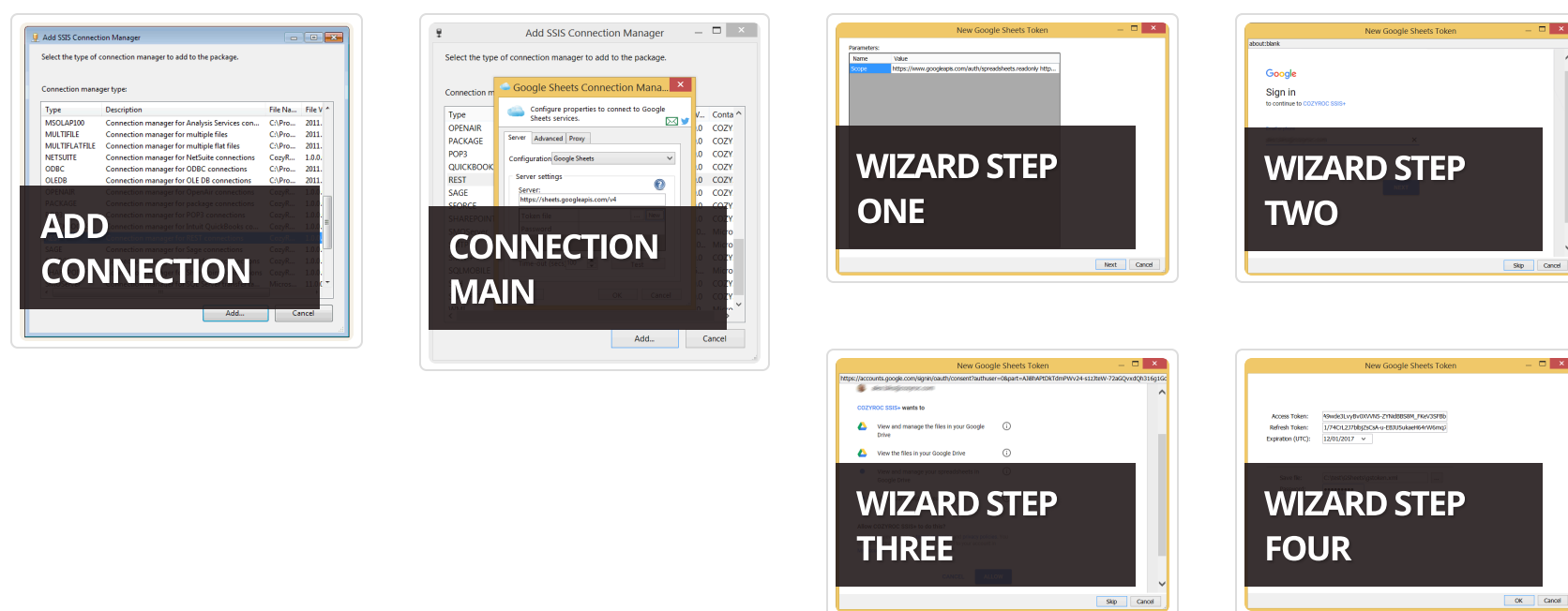
Overview



Configuration is provided for establishing connections with the Google Sheets service. The configuration is used in the REST Connection Manager.

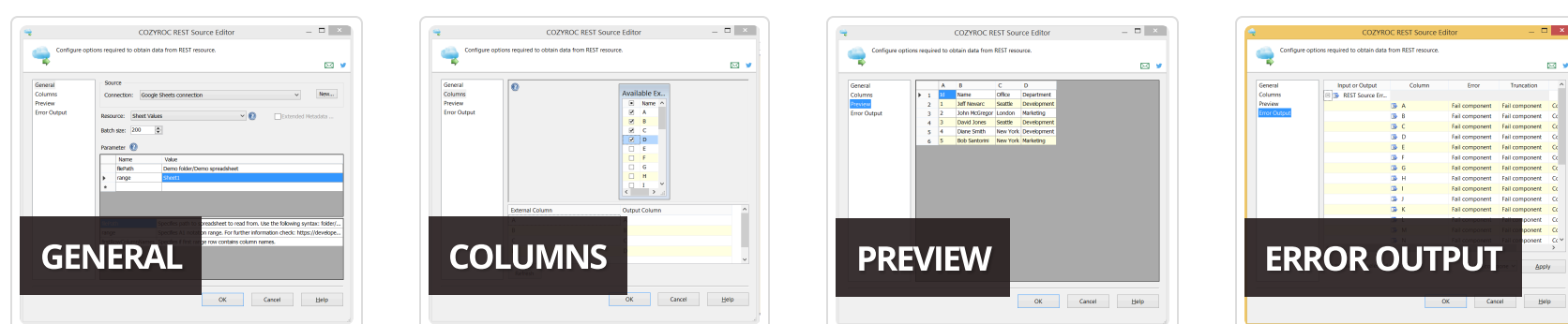
Setup

Press icon to get more information about the connection parameters.



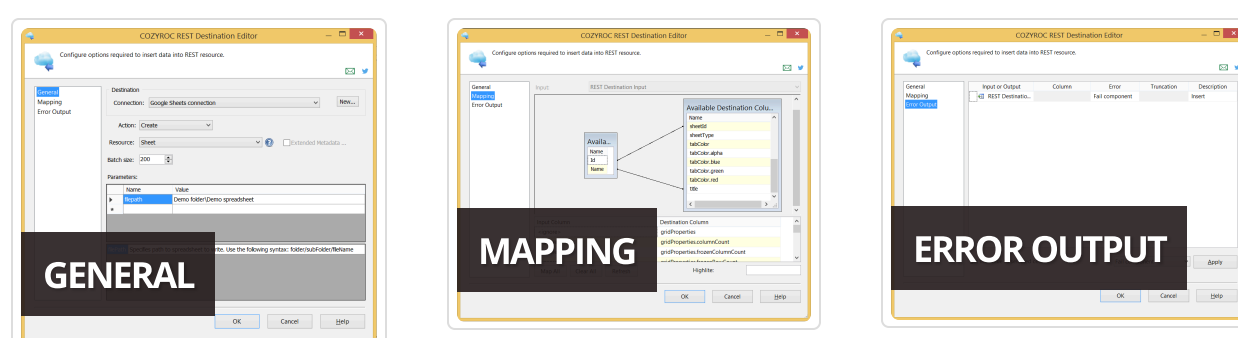
Obtain data

Use REST Source component to get data from service resource.



Insert data

Use REST Destination component to insert data into service resource.



Demonstration



Quick Start

- [Establish connection](#)
 - [Consume data from service](#)
 - [Push data to service](#)
- [Contribute](#)

Configuration

- [Service](#)
- [Authentication](#)
- [Resources](#)
- [Referenced Fields Definitions](#)
- [Scripts](#)

Knowledge Base

- [Where can I find the documentation for the Google Sheets Connection?](#)
 - [How to manually generate a Google Services Token?](#)
- [See more...](#)

Samples

- [Package showing how to upload Excel file and convert into Google Sheet \(for SQL Server 2012\)](#)

What's New

- 2.1
 - New: Improved parameter entry.
- 2.0 SR-1
 - New: Support for shared drives.
 - Fixed: Failed with error "Maximum number of named properties reached," when a folder contains more than 16000 files (Thank you, Dave).
- 1.9 SR-2
 - New: Updated to use new OAuth2 2.0 authorization addresses.
- 1.7 SR-2
 - Fixed: Various fixes (Thank you Karen).
- 1.7
 - New: Introduced connection.

Related documentation

Google Admin Connection

Google Analytics Connection

Google AppSheet Connection

Google BigQuery Connection

Google Calendar Connection

Google Cloud Monitoring Connection

Google Drive Connection

Google Search Console Connection

Google Tasks Connection



COZYROC SSIS+ Components Suite is free for testing in your development environment. A licensed version can be deployed on-premises, on Azure-SSIS IR and on COZYROC Cloud.

[Download Now!](#)

Newsletter

Join VIP subscribers getting Exclusive COZYROC SSIS+ Library updates, private Q&A and more.

No spam, ever. Just great stuff!

[Join](#)

Contact Us

- Address:** 4350 Lassiter at North Hills Ave, Raleigh, NC 27609, United States
- Phone:** +1 (919) 249-7421
- Pre-Sales:** Schedule a call
- Support:** Help Center

Follow Us



Support

- [Help Center](#)
- [Getting Started](#)
- [Licensing](#)
- [Tutorials](#)
- [Forum](#)