

HighLevel Connection

Overview



A configuration is provided for establishing connections with the HighLevel service. The configuration is used in the REST Connection Manager.

Overview

Quick Start

Configuration

Knowledge Base

What's New

Setup

Press icon to get more information about the connection parameters.

Obtain data

Use [REST Source](#) component to get data from service resource.

Insert data

Use [REST Destination](#) component to insert data into service resource.

Quick Start

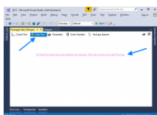
Consume data from service

★★★★★

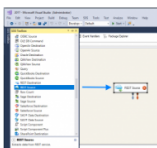
No votes yet

This guide demonstrates how to read data from the **HighLevel** service resource using the COZYROC REST Source component.

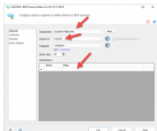
Step 1: Select an existing "Data Flow task" or create a new "Data Flow Task".



Step 2: Open **SSIS Toolbox** and drag and drop COZYROC **REST Source** component.

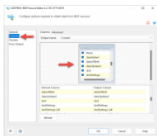


Step 3: Double click on the **REST Source** component and select **HighLevel** connection from the combo. Then, select the desired **HighLevel** resource from the second dropdown.



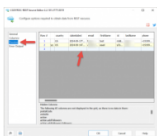
Optionally, you can add extra parameters in the grid below if needed.

Step 4: Click on the **Columns** tab and select **HighLevel** resource columns you want to read.



Step 5: Click **Preview** to verify that all necessary resource columns are included.

Congratulations! You've successfully learned how to read data from the **HighLevel** service.



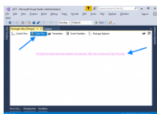
Push data to service

★★★★★

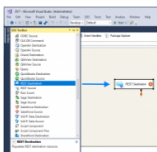
No votes yet

This guide explains how to write data to the **HighLevel** service resource using the COZYROC REST Destination component.

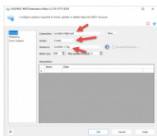
Step 1: Select an existing "Data Flow task" or create a new "Data Flow Task".



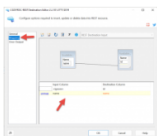
Step 2: Open the "SSIS Toolbox" and drag and drop COZYROC "REST Destination" component.



Step 3: Double click on the **REST Destination** component and select **HighLevel** connection from the combo. Also, select resource action and **HighLevel** resource you want to work on.



Step 4: Click on the "Mapping" tab and map the input columns for the process you are configuring.



If you want to provide input for other resource composite objects, change the input above and map the columns.

Done. You have now learned how to write data into the **HighLevel** resource.

[Contribute](#)

Configuration

[Service](#)

[Authentication](#)

[Resources](#)

[Referenced Resource Definitions](#)

[Referenced Fields Definitions](#)

[Scripts](#)

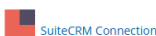
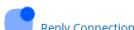
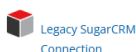
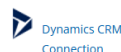
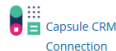
Knowledge Base

What's New

2.3

- New: Introduced connection.

Related documentation



COZYROC SSIS+ Components Suite is free for testing in your development environment.

A licensed version can be deployed on-premises, on [Azure-SSIS IR](#) and on [COZYROC Cloud](#).

[Download Now!](#)

Newsletter

Join VIP subscribers getting **Exclusive** COZYROC SSIS+ Library updates, private Q&A and more.

Email Address

No spam, ever. Just great stuff !

[Join](#)

Contact Us

Address: 4350 Lassiter at North Hills Ave, Raleigh, NC 27609, United States

Phone: +1 (919) 249-7421

Pre-Sales: Schedule a call

Support: Help Center

Follow Us



Support

[Help Center](#)

[Getting Started](#)

[Licensing](#)

[Tutorials](#)

[Forum](#)