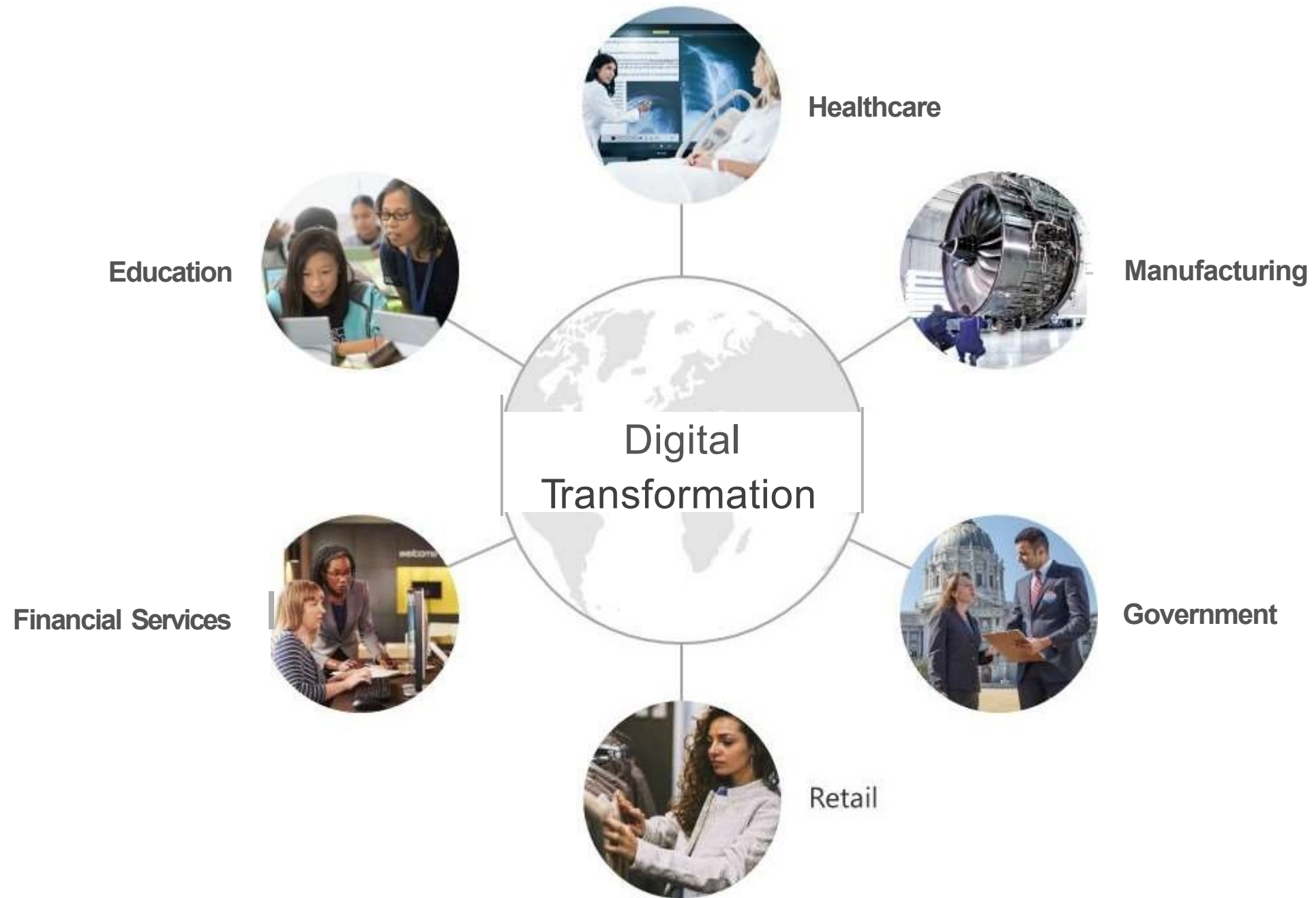


**THE WORLD HAS CHANGED**







The Classic  
Workplace



The Modern  
Workplace



work-life  
blur



more  
mobile



digital  
generation



multiple  
devices



tech  
savvy



fast  
paced

A complete, intelligent solution that empowers everyone to be creative and work together, securely



Unlock  
creativity



Built for  
teamwork



Integrated  
for simplicity



Intelligent  
security

**Microsoft 365**

Office 365 + Windows 10 + Enterprise Mobility + Security



# Unlocks creativity

Work naturally with ink, voice and touch

Visualize information in new ways

Create compelling content with intelligent apps

Build on the work and expertise of others



# Built for teamwork

Enterprise-class email, voice and video

Connect everyone with company-wide communities

Share and collaborate on documents in real time

Includes Microsoft Teams, the new chat-based workspace





# Integrated for simplicity

Always up-to-date

Self-service deployment

Cloud-based management

Rich telemetry from your environment

Reduce TCO with consolidated solutions





# Intelligent security

Protect identity, apps, data & devices

Thwart advanced threats

Manage data archiving, governance & discovery

Powered by Microsoft Intelligent Security Graph

Accelerate GDPR compliance



# Microsoft 365 Enterprise

## Office 365 Enterprise

Chat- centric workspace

Email & Calendar

Voice, Video & Meetings

Office applications/ co-authoring

Sites & Content Management

Analytics

Advanced Security & Compliance

## Enterprise Mobility+ Security

Identity & Access Management

Managed Mobile Productivity

Information Protection

Identity Driven Security

## Windows 10 Enterprise

Advanced Endpoint Security

Designed For Modern IT

More Productive

Powerful, Modern devices

# Microsoft 365: Universal Toolkit for Teamwork

Outlook



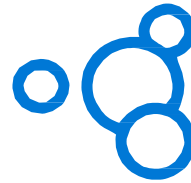
Email & Calendar

SharePoint



Intranets &  
Content Management

Yammer



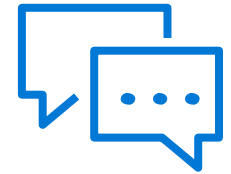
Connect Across  
the Organization

Office Apps



Co-Author

Teams



Hub for Teamwork

**Office 365 Groups**

Single team membership  
across apps and services

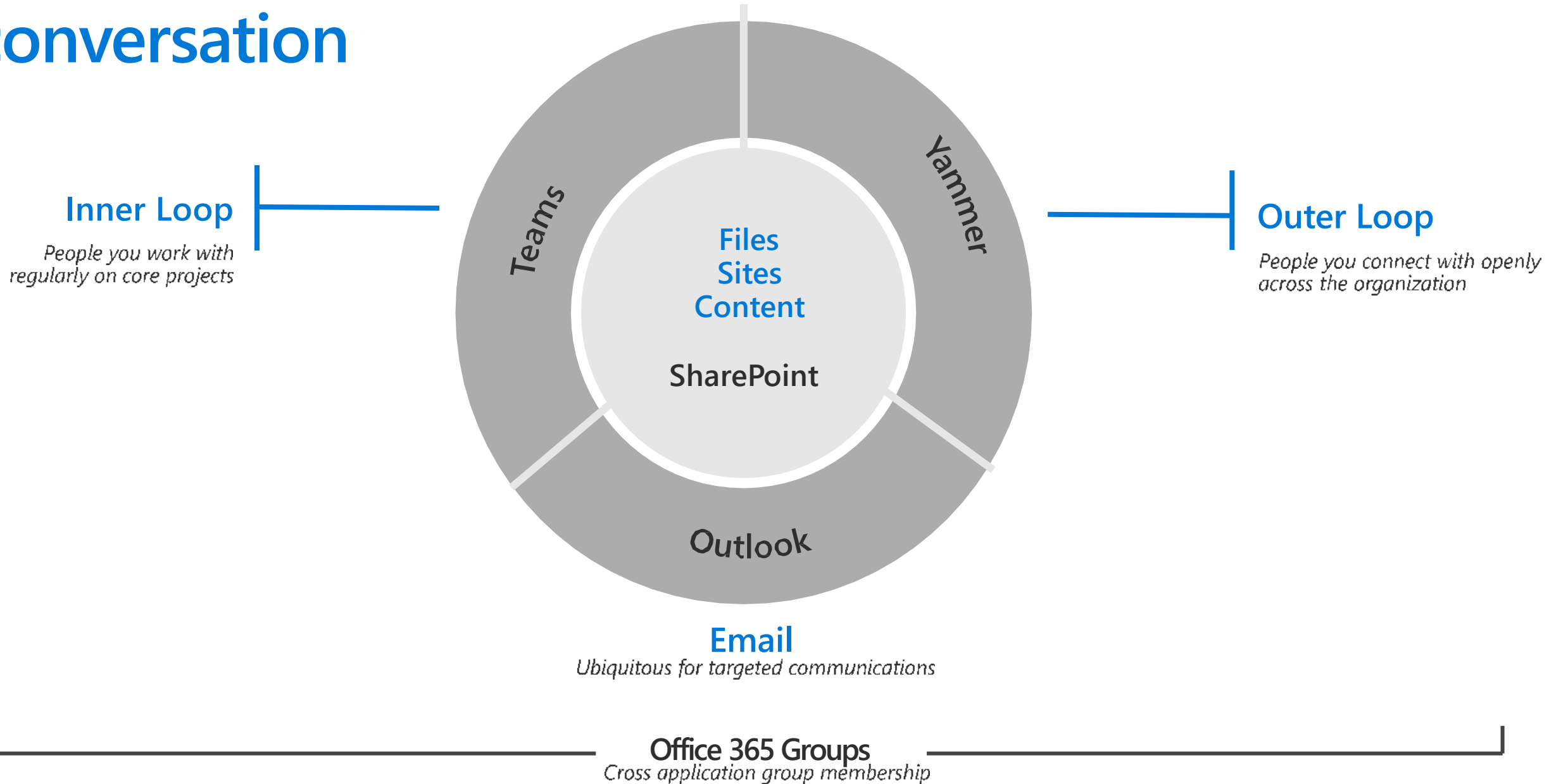
**Microsoft Graph**

Suite-wide intelligence  
connecting people and content

**Security and Compliance**

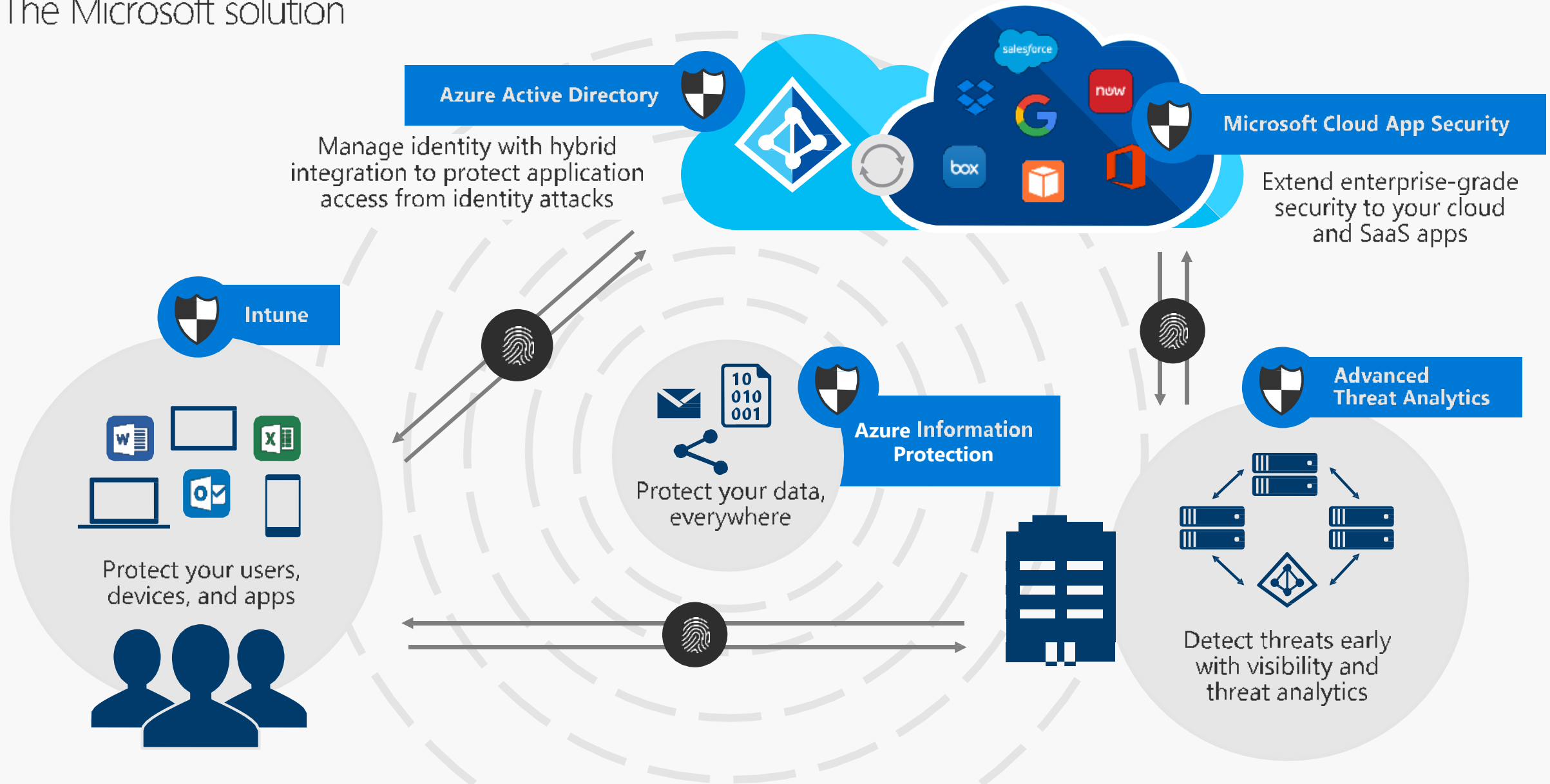
Centralized policy management

# Microsoft 365 Teamwork: Where to start a conversation



# Enterprise mobility + security

The Microsoft solution



# EMS Benefits for O365 customers

Enterprise Mobility + Security	Identity and access management	Managed mobile productivity	Information protection	Identity-driven security
	<b>Azure AD for O365+</b> <ul style="list-style-type: none"><li>• Advanced security reports</li><li>• Single sign-on for all apps</li><li>• Advanced MFA</li><li>• Self-service group management &amp; password reset &amp; write back to on-premises,</li><li>• Dynamic Groups, Group based licensing assignment</li></ul>	<b>MDM for O365+</b> <ul style="list-style-type: none"><li>• PC management</li><li>• Mobile app management (prevent cut/copy/paste/save as from corporate apps to personal apps)</li><li>• Secure content viewers</li><li>• Certificate provisioning</li><li>• System Center integration</li></ul>	<b>RMS for O365+</b> <ul style="list-style-type: none"><li>• Automated intelligent classification and labeling of data</li><li>• Tracking and notifications for shared documents</li><li>• Protection for on-premises Windows Server file shares</li></ul>	<b>Cloud App Security</b> <ul style="list-style-type: none"><li>• Visibility and control for all cloud apps</li></ul> <b>Advanced Threat Analytics</b> <ul style="list-style-type: none"><li>• Identify advanced threats in on premises identities</li></ul> <b>Azure AD Premium P2</b> <ul style="list-style-type: none"><li>• Risk based conditional access</li></ul>
	<b>Basic identity mgmt. via Azure AD for O365:</b> <ul style="list-style-type: none"><li>• Single sign-on for O365</li><li>• Basic multi-factor authentication (MFA) for O365</li></ul>	<b>Basic mobile device management via MDM for O365</b> <ul style="list-style-type: none"><li>• Device settings management</li><li>• Selective wipe</li><li>• Built into O365 management console</li></ul>	<b>RMS protection via RMS for O365</b> <ul style="list-style-type: none"><li>• Protection for content stored in Office (on-premises or O365)</li><li>• Access to RMS SDK</li><li>• Bring your own key</li></ul>	<b>Advanced Security Management</b> <ul style="list-style-type: none"><li>• Insights into suspicious activity in Office 365</li></ul>

# EMS benefits for Windows 10 customers

## Enterprise Mobility + Security



Windows 10

### Identity and access management



- Conditional access policies for secure single sign-on
- MDM auto-enrollment
- Self-Service Bitlocker recovery
- Password reset with write back to on-premises
- Cloud-based advanced security reports and monitoring
- Enterprise State-Roaming

- Single sign-on for business cloud apps
- Device setup and registration for Windows devices

### Managed mobile productivity



- Mobile device management
- Mobile app management
- Secure content viewer
- Certificate, Wi-Fi, VPN, email profile provisioning
- Agent-based management of Windows devices (domain-joined via ConfigMgr and internet-based via Intune)

- Windows Store for Business
- Traditional domain join manageability
- Manageability via MDM and MAM

### Information protection



- Automated intelligent classification and labeling of data
- Tracking and notifications for shared documents
- Protection for content stored in Office and Office 365 & Windows Server on premises

- Encryption for data at rest and generated on device
- Encryption for data included in roaming settings

### Identity-driven security



#### Cloud App Security

- Visibility and control for all cloud apps

#### Advanced Threat Analytics

- Behavioral analytics for advanced threat detection

#### Azure AD Premium

- Risk based conditional access

#### Windows Defender Advanced Threat Protection

- Identify advanced threats focused on Windows 10 behavioral sensors



# Modern IT

---

Multiple Device Platforms

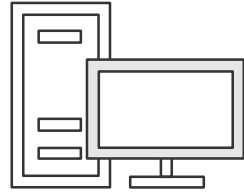
User and Business Owned

Cloud Managed & SaaS Apps

Automated

Proactive

Self-Service



## Traditional IT

Single Device

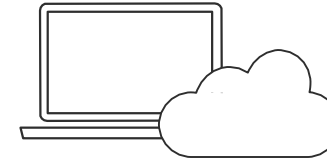
Business Owned

Corporate Network & Legacy Apps

Manual

Reactive

High-touch



## Modern IT

Multiple Devices

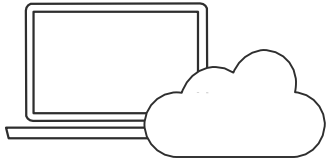
User and Business Owned

Cloud Managed & SaaS Apps

Automated

Proactive

Self-Service



## Modern IT

---

Multiple Devices

User and Business Owned

Cloud Managed & SaaS Apps

Automated

Proactive

Self-Service

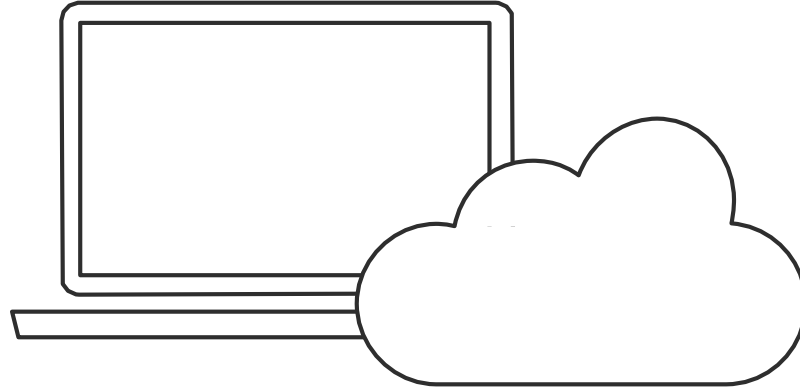
Simpler

More secure

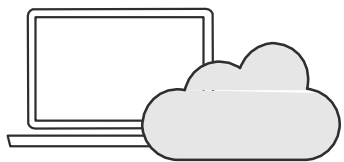
Lower TCO

Better experience

# Microsoft 365 powered device



The best way to experience Microsoft 365



# Microsoft 365 powered device

The best way to experience  
Microsoft 365



# Microsoft 365 powered device – target companies of all sizes

Choose the M365 plan that suits your business need, be it SMB or enterprise, M365 had the plan to cover all.

## Microsoft 365 Business



Microsoft 365 Business

For organizations with less than 300 people

## Microsoft 365 Enterprise



Microsoft 365 F1

For Firstline Workers



Microsoft 365 E3 & E5

For large organizations or advanced requirements

# CTC's Service Offering

- Assessment on existing environment to provide a tailor-made user profile that match the M365 plan required
- Consultation on the best practices to assist your organization to modernize your workplace journey
- Migration as well as implementation according to industrial standard practice
- Managed services to fully enabled your work force to focus on their work
- Adoption of the new technologies to fully optimized the features available within subscribed plan