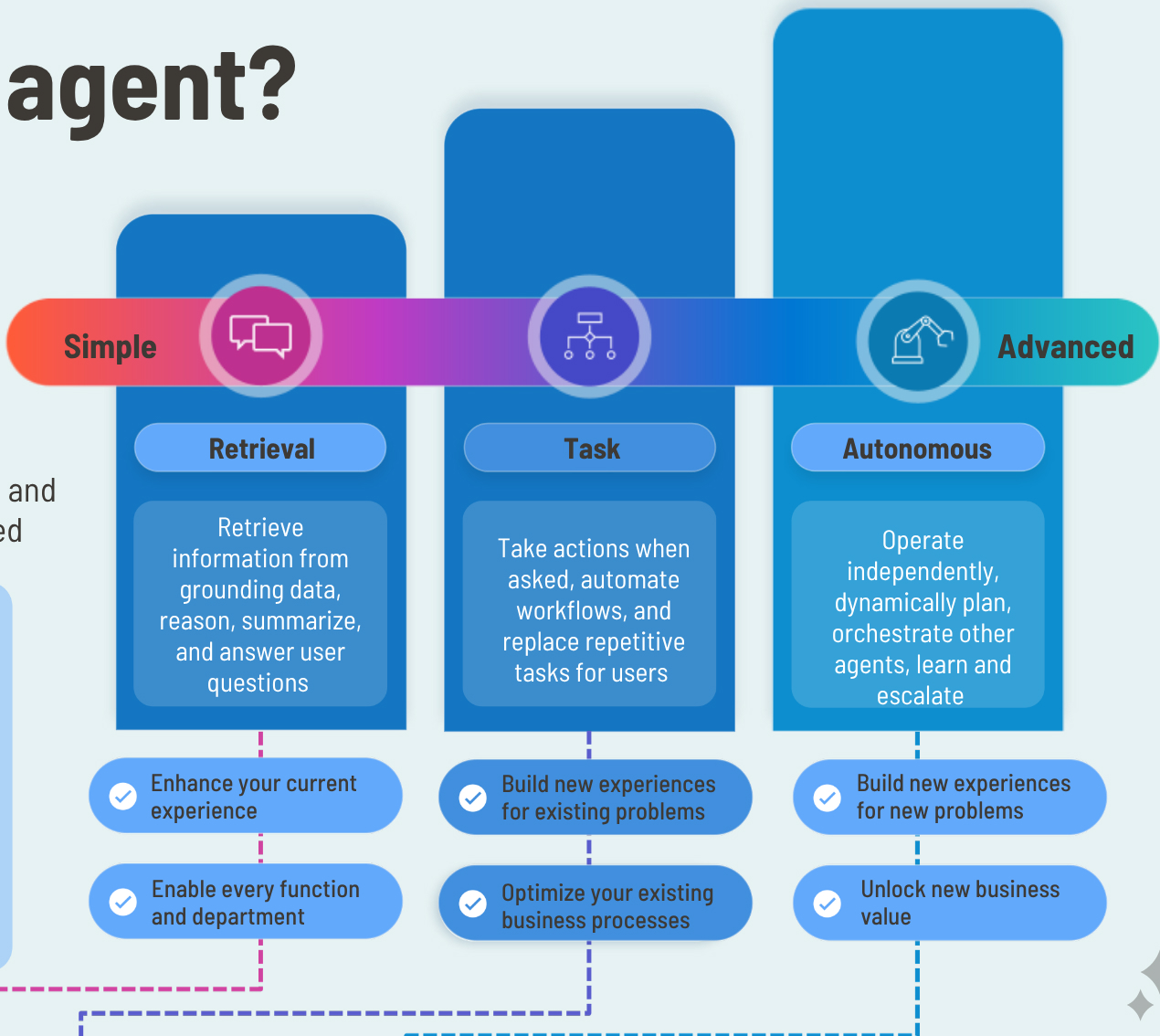


What is an agent?

An agent uses AI to automate and execute business processes, working alongside or on behalf of a person, team or organization.

Agents vary in levels of complexity and capabilities depending on your need



IT Helpdesk agent
How do I connect to the corporate network?

Budget Manager agent
Review outstanding open PO's and begin financial planning

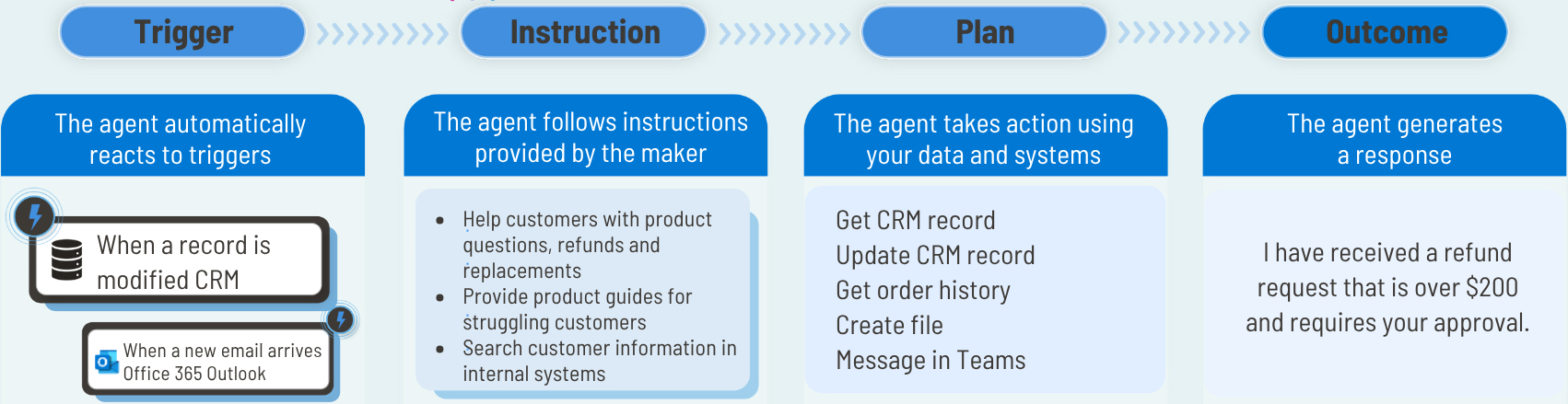
Customer Support agent
The agent has identified new support issues and triaged to other agents.

HR Agent

Contract Agent

Operations Agent

Solutions for every function and team



Tell your agents when to act

- When an item is created SharePoint
- When a new hire starts HR Management
- Recurrence Schedule

Design your agents' behavior

- Build your way
 - Natural language
 - Pre-built templates
 - Visual canvas
 - Code

Connect your agents to knowledge and applications

Your Data

- Data connectors External systems
- Microsoft Graph Productivity data
- Microsoft Dataverse Business data
- Microsoft Fabric Analytics

Deploy agents to your channels

Build your own network of agents

A secure, trusted platform

- No infrastructure management
- Granular governance controls
- Enterprise data protection
- Streamlined lifecycle management

Microsoft Copilot Studio

