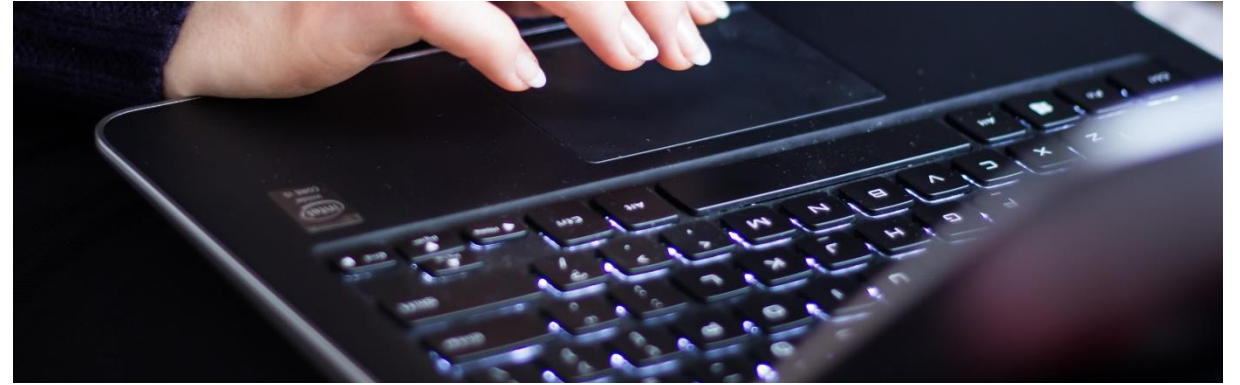


Data#3

Endpoint Manager Launchpad

Endpoint Manager Launchpad with Data#3

Our Endpoint Manager Launchpad solution helps you take control of your hybrid and remote worker devices, ensuring they are secure, up to date and have the right apps for your staff to be productive.



Additionally, our solution enables your organisation to leverage a single platform to manage workstations, organisation-owned mobile devices and BYOD.

One Platform to Deploy and Manage



Microsoft Endpoint Manager

Manage all devices from the cloud

Integrates with Azure AD

Deploy Apps and apply policies to your mobile devices and workstations

Secure your devices by enforcing configuration policies remotely



Windows Autopilot

Automatically join devices to Azure AD, enrol in Endpoint Manager, apply configuration and deploy apps

User-drive, no IT intervention required

Pre-provisioning option to ensure apps and policies are ready before sending the device to the user



Azure Active Directory

Identity management in the cloud

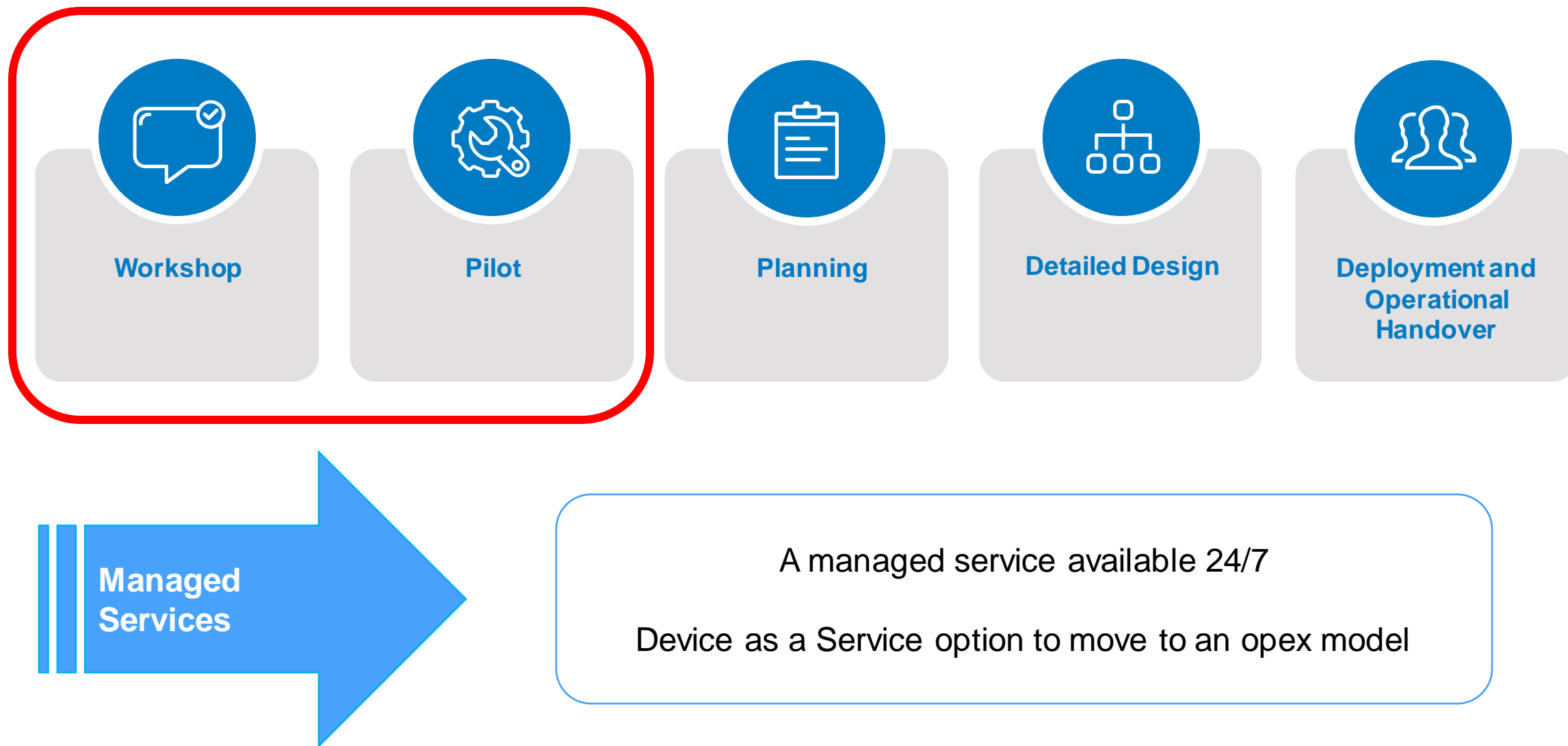
Devices enrolled in Azure AD to authenticate

User access and MFA controlled through Azure AD

Integrate with thousands of apps to provide single sign-on



Taking you through every step of the journey



Endpoint Manager Pilot Outcomes



- ✓ Planning and Art of the Possible Workshop
- ✓ Automated deployment using Windows Autopilot
- ✓ Leverages Windows 10 or Windows 11
- ✓ Office 365 apps deployed as part of the automated build
- ✓ Basic configuration policy applied using Microsoft Endpoint Manager
- ✓ Microsoft Updates configured using Microsoft Endpoint Manager
- ✓ Microsoft Endpoint Manager inventory reporting
- ✓ BitLocker device encryption
- ✓ Basic functionality testing
- ✓ Up to 3 pilot devices deployed

Duration of engagement



**Small to
medium
organisations**

- ✓ A two-three week engagement including workshop and pilot configuration



**Larger
organisations**

- ✓ We suggest a customised solution to ensure all of your requirements are met and complicated scenarios are considered such as tool migration, implications on in-house applications, authentication and identity.

Data#3



www.data3.com.au



1300 23 28 23



[Linkedin.com/company/data3](https://www.linkedin.com/company/data3)



[Twitter.com/data3limited](https://twitter.com/data3limited)



[Facebook.com/data3limited](https://www.facebook.com/data3limited)



[YouTube.com/data3limited](https://www.youtube.com/data3limited)