



DDM 3.0 Quick Start Guide

Beijing Datablau Technologies

Copyright reserved.

目录

DDM 3.0 Quick Start Guide	1
1 .1 Overview	3
1 .2 Release:	3
1 .3 Installation:	3
1 .4 Quick Start	4
2 Software Maintenance.....	11
2 .1 Error log.....	11
2 .2 About Us	11

1 .1 Overview

Datablau Data Modeler is consisted of four components: Data Modeling, Data Standard Management, Naming Standard Management, and Model Repository. Currently the modeling component is opened for free trial, and because the rest three need server setup to enable coordination among team members, it is opened only on enterprise addition.

1 .2 Release

The third release of application is in Dec, 2017.

1 .3 Installation

Hardware minimum, Configuration:

- CPU: I5 Dual core and plus
- MEM: 8G and above
- Hard Disk Space: 50G and above

1. Our application requires

- Windows x64, and OS language can be English or Chinese, x32 OS is not supported.
- .Net Framework 4.5+
- JRE 1.8+ (For enterprise only)

2. Before install our application, you can check under CMD if .net framework and JRE are installed with right version.

- Run "`wmic product where "Name like 'Microsoft .NET%'" get Name, Version`" to check if .Net Framework version is installed.

```
C:\Users>wmic product where "Name like 'Microsoft .Net%'" get Name, Version
Name                                     Version
Microsoft .NET Framework 4.5.1 Multi-Targeting Pack 4.5.50932
Microsoft .NET Framework 4.5 Multi-Targeting Pack 4.5.50710
Microsoft .NET Framework 4.5.1 Multi-Targeting Pack (ENU) 4.5.50932
Microsoft .NET Framework 4.5.1 RC Multi-Targeting Pack for Windows Store Apps 4.5.21005
Microsoft .NET Framework 4.5 SDK 4.5.50710
Microsoft .NET Framework 4.5.1 RC Multi-Targeting Pack for Windows Store Apps (ENU) 4.5.21005
Microsoft .NET Framework 4 Multi-Targeting Pack 4.0.30319
Microsoft .NET Framework 4.5.1 SDK 4.5.51641
```

- Run "`java -version`" to see if JRE version is the required

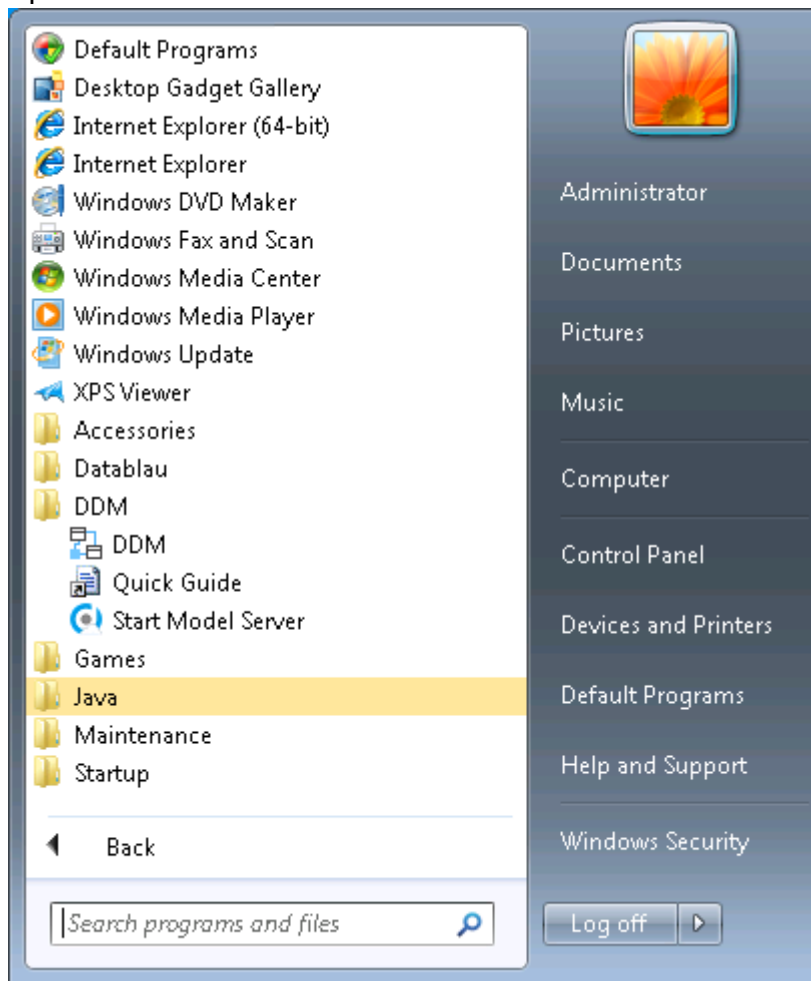
```
C:\Users>java -version
java version "1.8.0_77"
Java(TM) SE Runtime Environment (build 1.8.0_77-b03)
Java HotSpot(TM) 64-Bit Server VM (build 25.77-b03, mixed mode)
```

When all above are ready, please download the installer from XXX, and double click the installer to run.

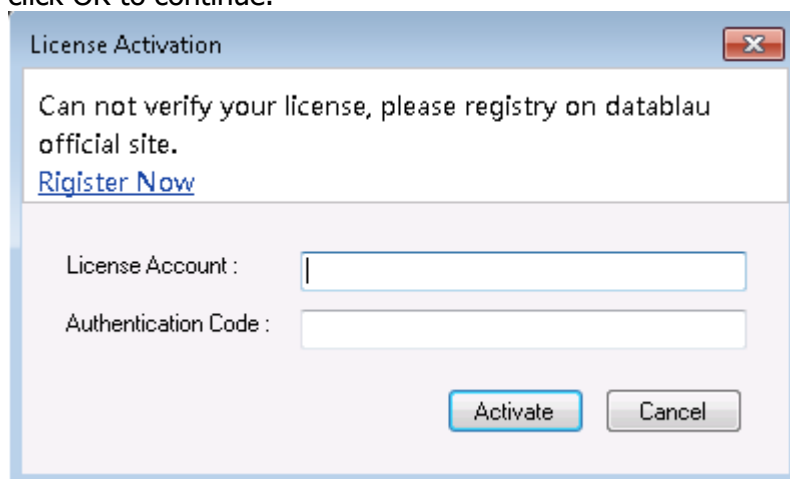
Please follow the installation steps to complete.

1.4 Quick Start

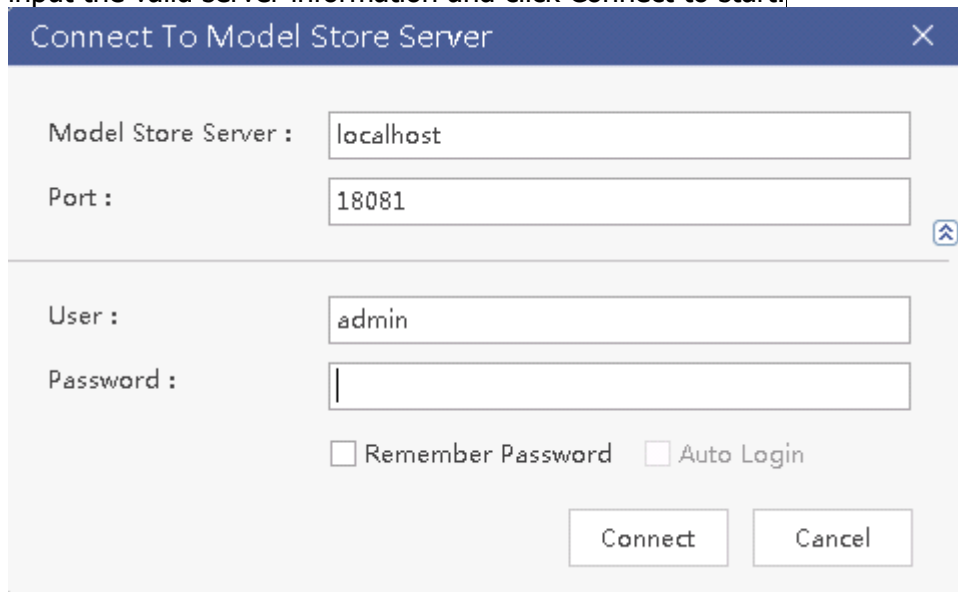
1. Open DDM > DDM from start menu'



2. It will prompt license validation dialog, please input your license information and click OK to continue.



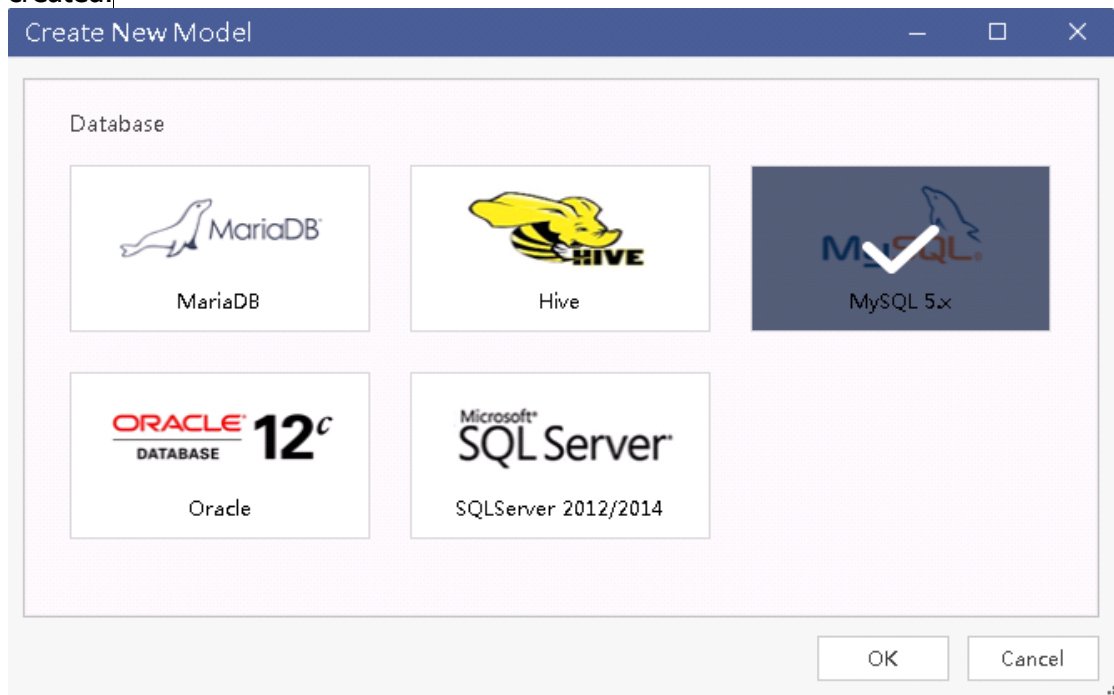
- On the "Connect To Server" window, click Cancel. For enterprise customer, please input the valid server information and click Connect to start.



The "Connect To Model Store Server" dialog box contains the following fields and controls:

- Model Store Server :** Text input field with "localhost" entered.
- Port :** Text input field with "18081" entered.
- User :** Text input field with "admin" entered.
- Password :** Password input field (empty).
- ☐ Remember Password
- ☐ Auto Login
- Buttons:** "Connect" and "Cancel".

- On the main window, click New to create a new database model, Select a DB type as mysql 5.x. Then a new blank model with default name "Model_1" is created.



The "Create New Model" dialog box displays a grid of database options under the heading "Database":

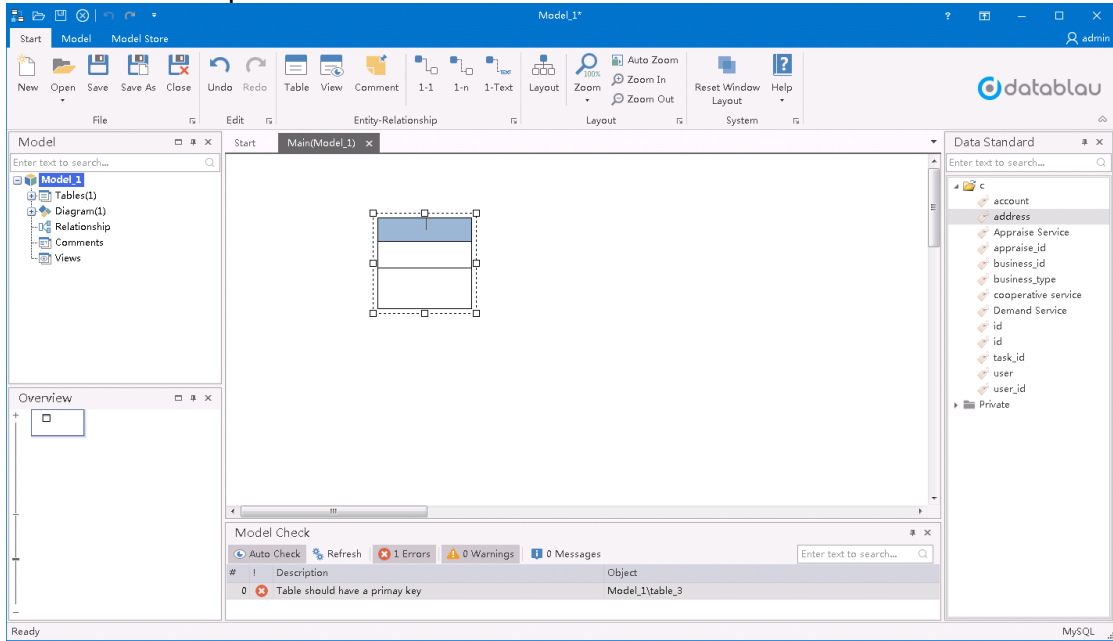
- MariaDB** (with logo)
- Hive** (with logo)
- MySQL 5.x** (with logo and a checkmark, indicating it is selected)
- Oracle** (with logo "ORACLE DATABASE 12c")
- SQL Server** (with logo "Microsoft SQL Server" and version "SQLServer 2012/2014")

Buttons at the bottom: "OK" and "Cancel".

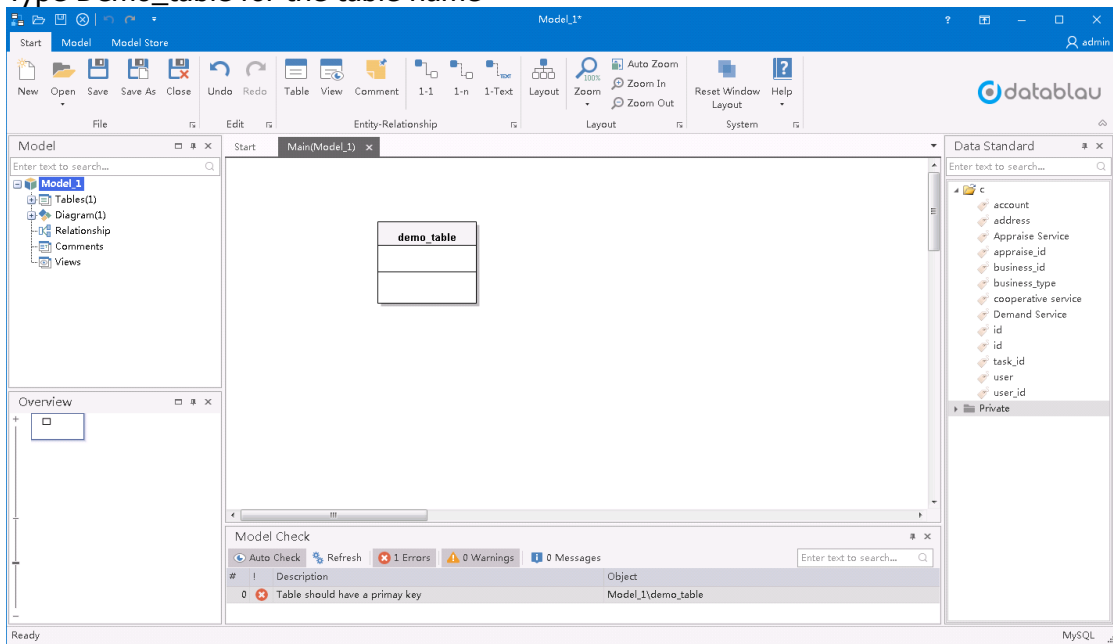
Note: The different of DB type here is associated with field's data type.

- Select Table from the tool bar, and then move mouse over the main diagram window, you will notice a dotted box under the cursor, left click anywhere within the windows to release the box, it will create a table for you. The table name is

remained to be updated.

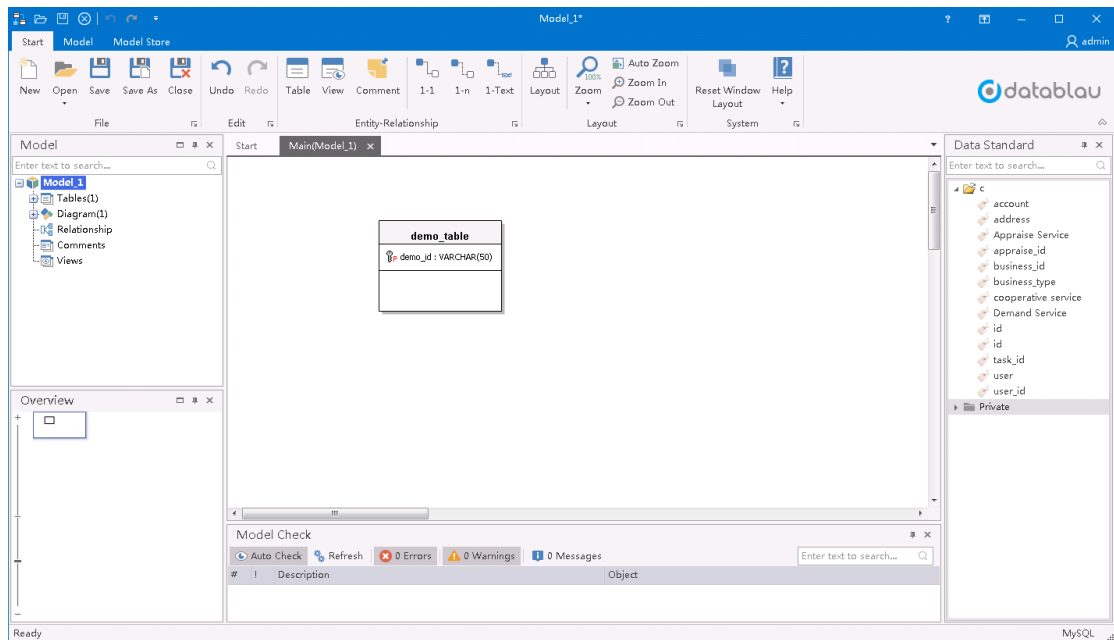


6. Type Demo_table for the table name



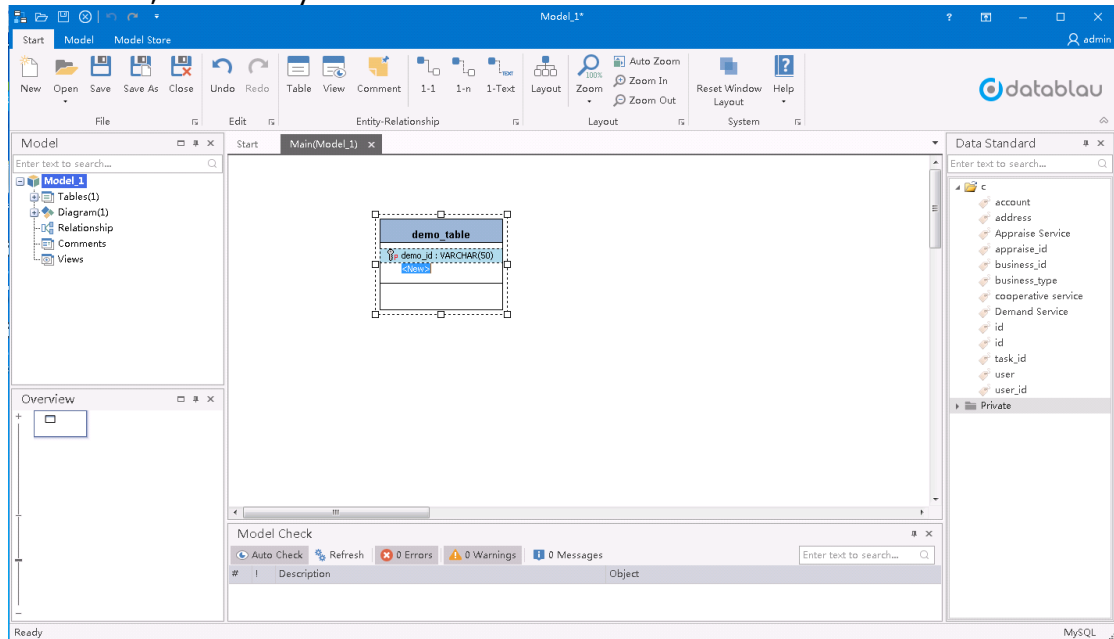
7. Press Enter when complete

8. The cursor will be move down to ask user to input a prime key, type demo_id for the pk.



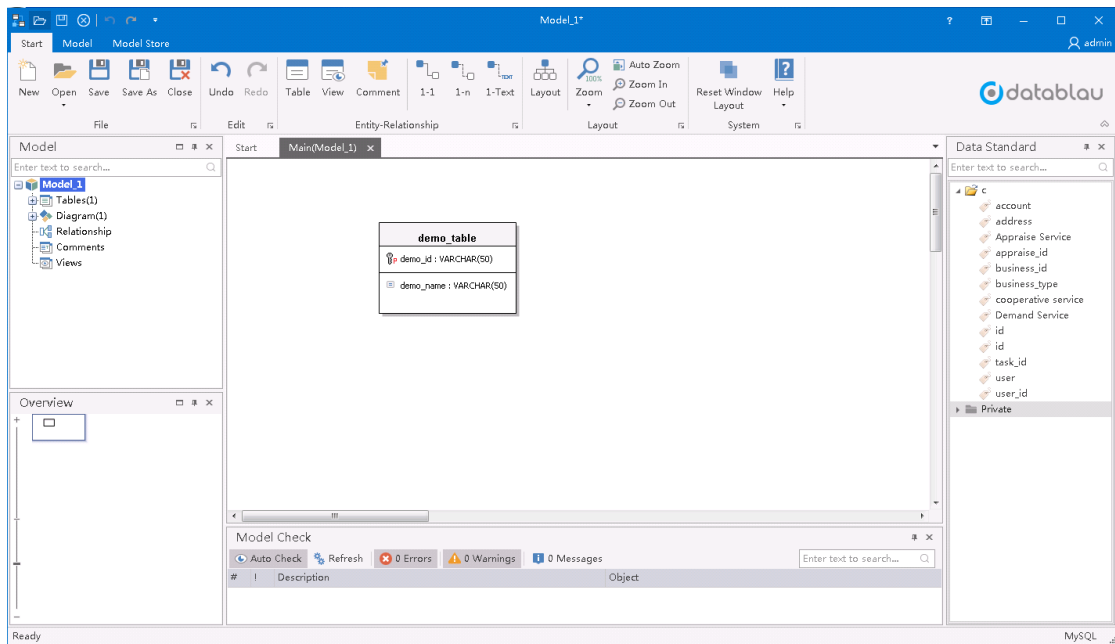
Note: there is a line across the field section, above the line are pk columns and below the line are non-pk columns.

9. Press Enter, it will ask you to add another PK.



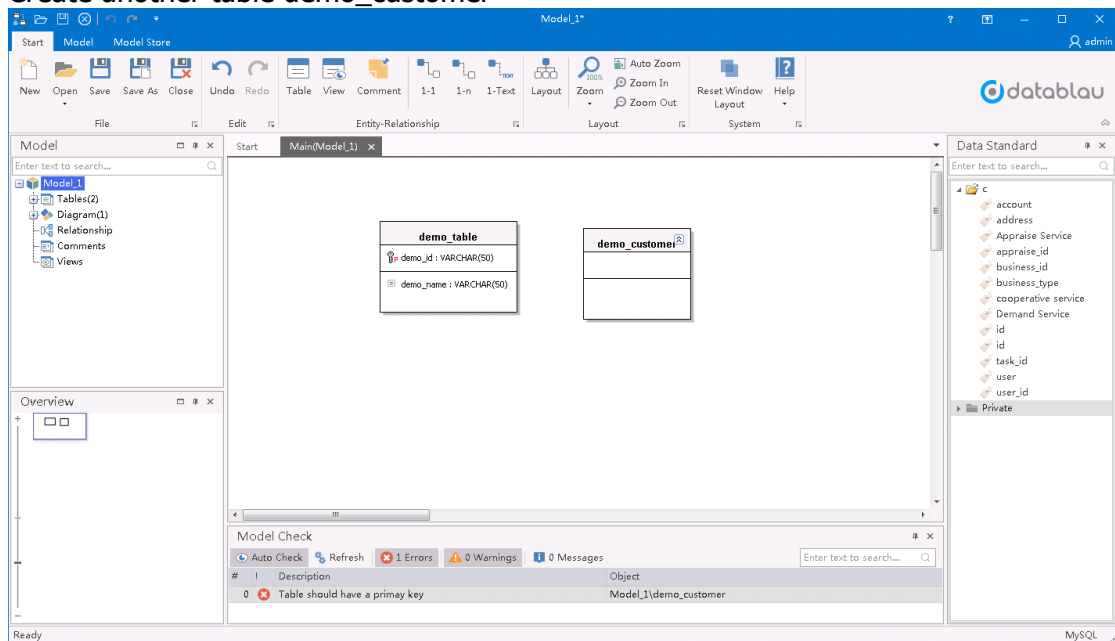
10. But here we will add only one PK. So press Enter again.

11. The cursor will jump down to the non-pk area, Type demo_name.

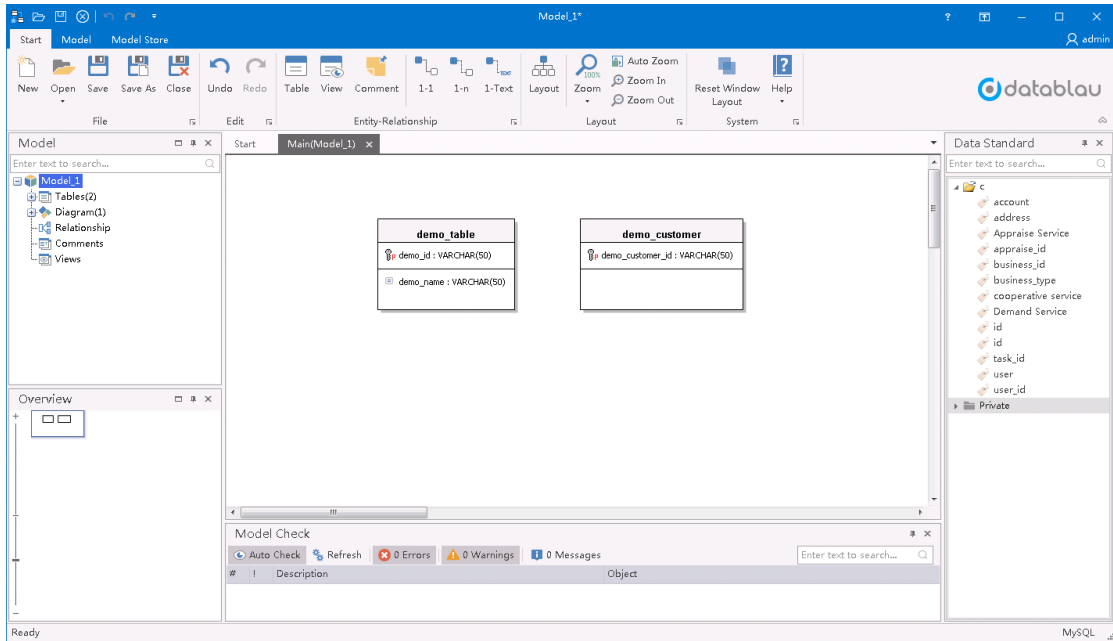


12. Continue to press Enter and add demo_date

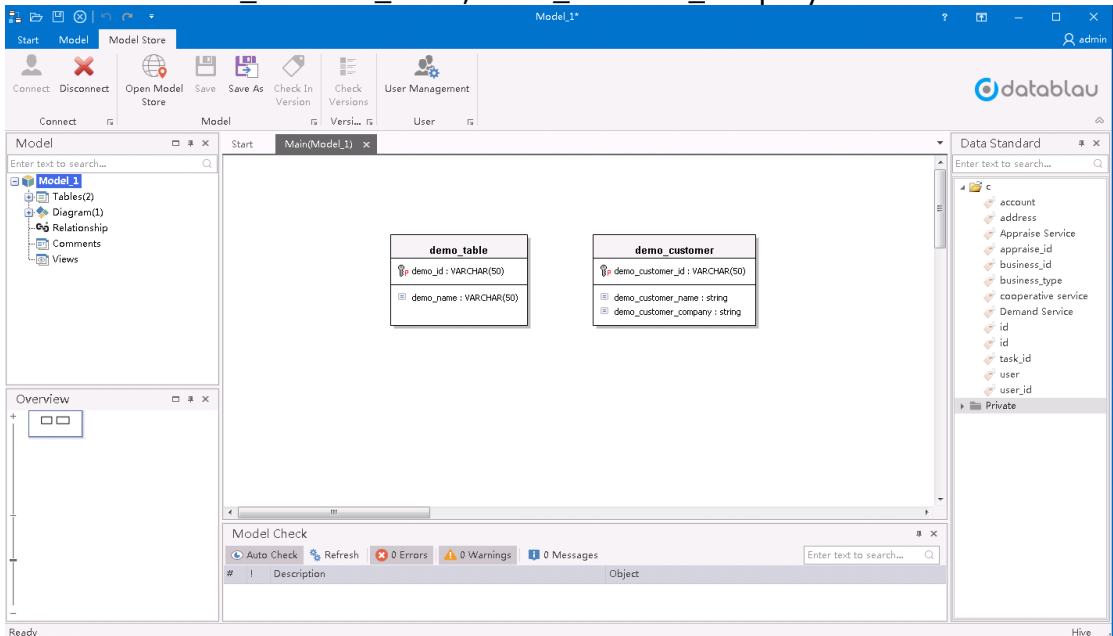
13. Create another table demo_customer



14. Add column demo_customer_id as PK



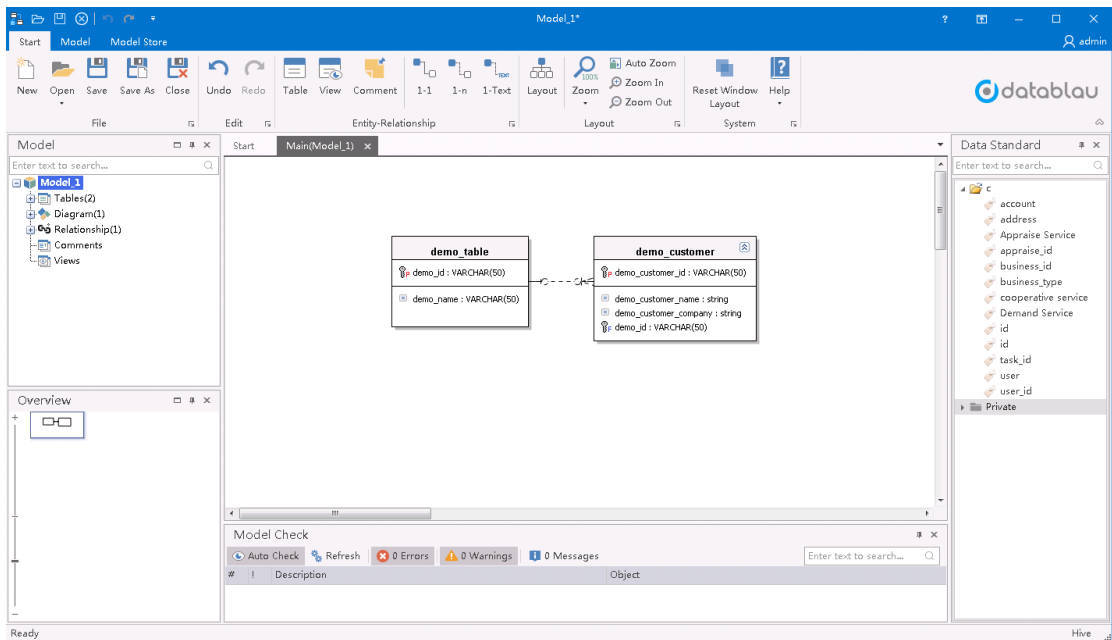
15. Add column demo_customer_name, demo_customer_company as non-PK.



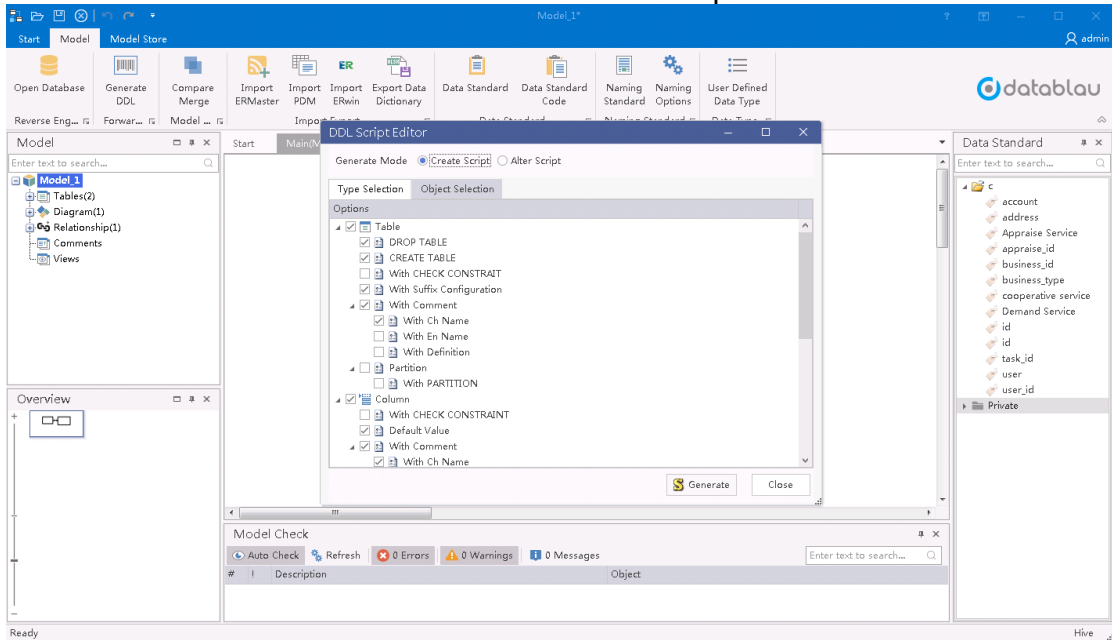
16. Click the icon of 1-n on the tool bar

17. Mouse over the table of demo_customer, left click, and then move mouse over table Demo_table, left click.

18. It will draw a relationship between the two tables, and migrate the PK demo_customer_id from table Demo_customer to Table Demo_Table as non-PK.

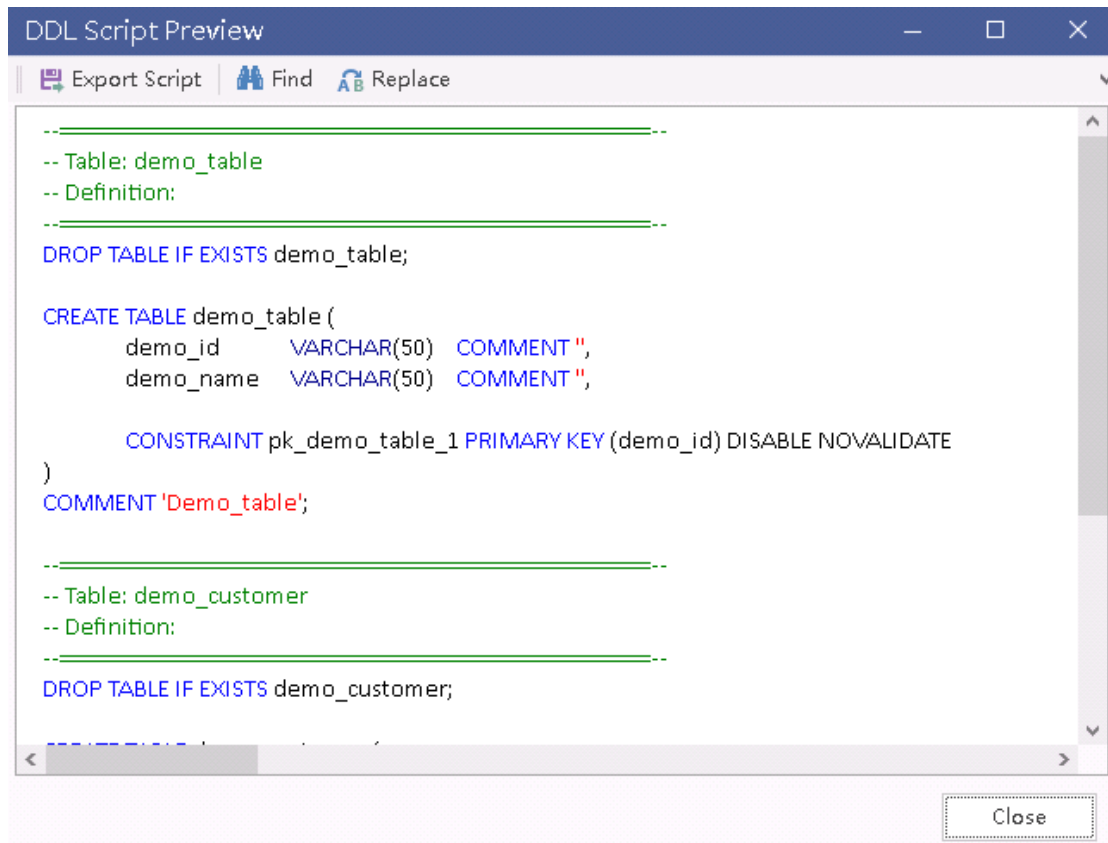


19. Click Model on the menu and select Generate DDL Script



20. On the pop-up window, confirm the options and click Generate.

21. It will prompt preview window of the DDL script



22. Export the script as sql or copy from the preview window

23. Run the script on DB client, you can create the tables

2 Software Maintenance

2.1 Error log

For Enterprise Edition, if any error, please check log on

C:\Users\[username]\AppData\Local\DDM\server.log

For Trial Edition, If meet any error during running, please capture the screenshot and contact with our technical support:

support@datablau.com

2.2 About Us

Beijing Datablau Technologies

Datablau focuses on Data Catalog, data governance and data preparation. Help enterprise understand data, integrate data and self-service data driven operation.

Contact us, Understand data and Win-win!

E-mail: sale@datablau.com

TEL: 13651203330(Beijing) / 13917041574(Shanghai)

Address: Guanghua Road SOHO, Chaoyan District, Beijing, PRC China.

Website: www.datablau.com