

Mobility Apps For SME

Introduction of OneApps – *Powered by Microsoft Office365*

July 2023



What is ONEAPPS



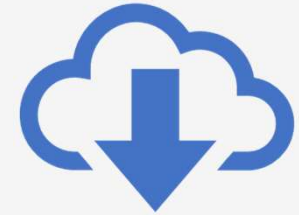
Process



Mobility

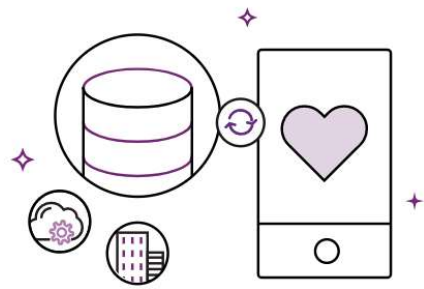


Data



Cloud

Rapid Mobile Apps Development



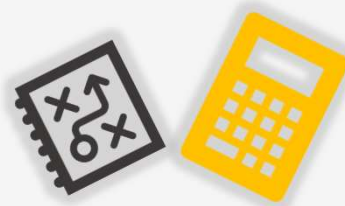
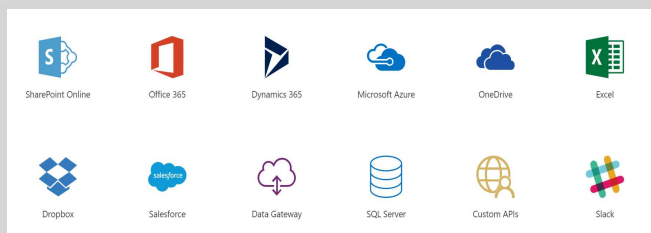
Connect to your systems
and create new data



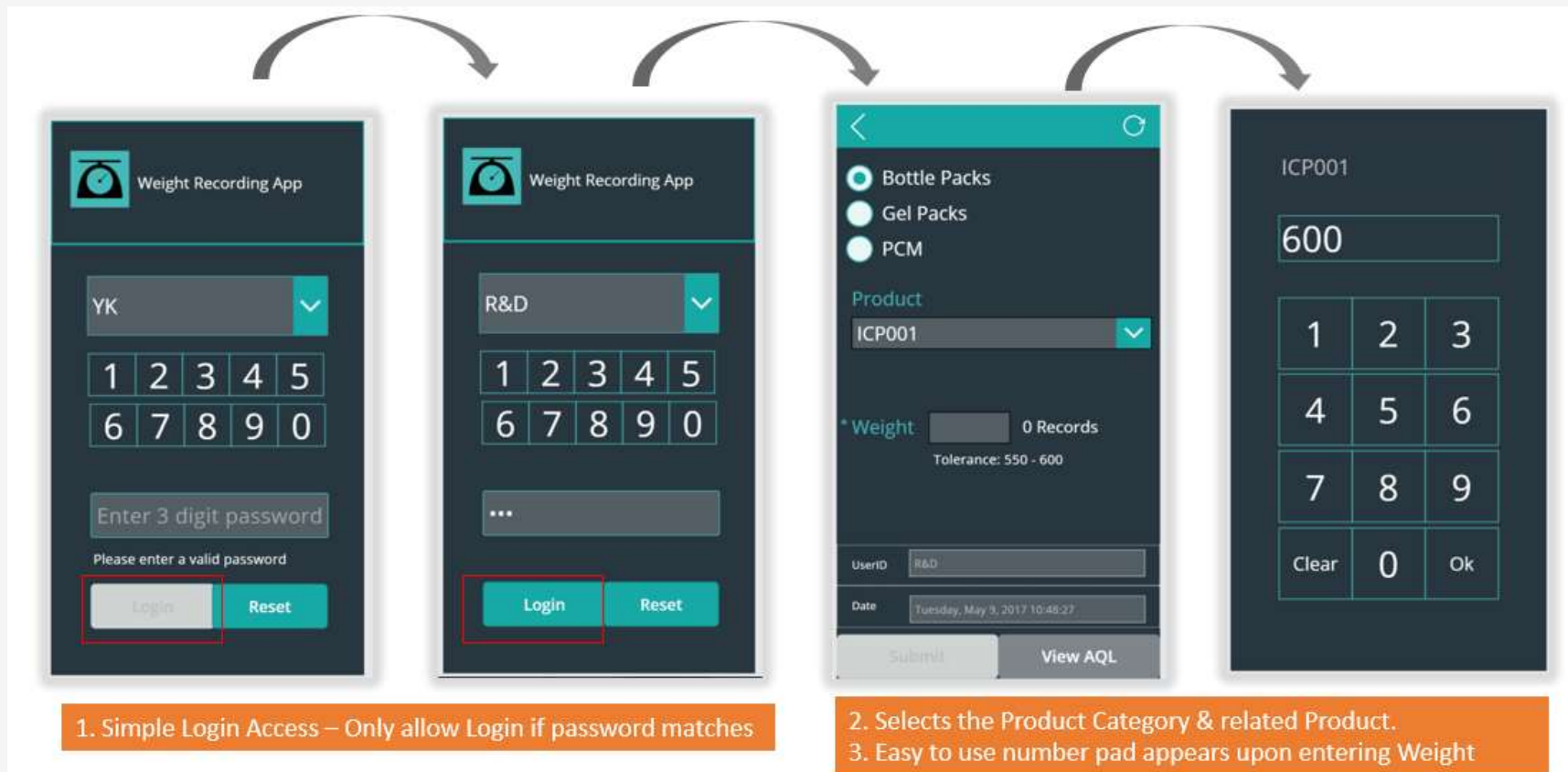
Build apps without
writing code



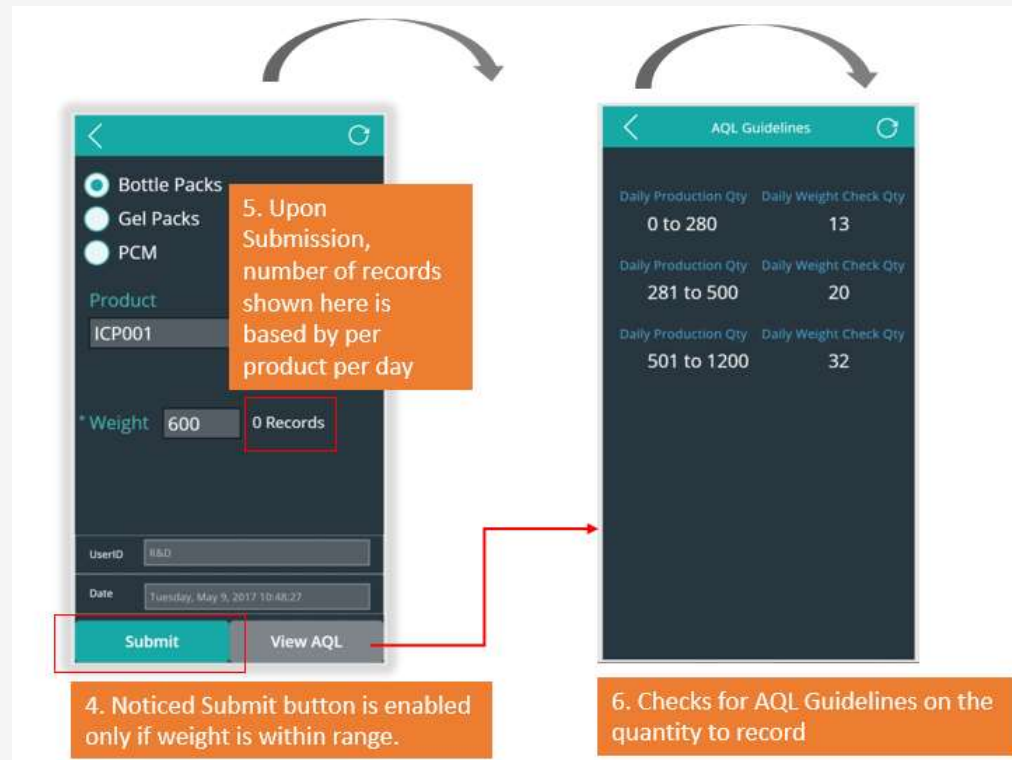
Publish and use on
web and mobile



Sample Business App For Ops Recording (4 screens design)



Sample Business App For Ops Recording (4 screens design)



Supported by 3 Excel data files stored in cloud

Excel Online

SGOPS Aerials

	A	B	C	D	E	F	G	H
1	Date	Time	UserID	Type	Product	Weight	PowerAppId	Comments
2	4/19/2017	7:53:29	WQ	Bottle Packs	BP6	3375	F5Anw2DgH4M	
3	4/19/2017	8:01:16	WQ	Bottle Packs	BP6	3380	V1YVA3v-SI	
4	4/19/2017	8:11:16	WQ	Bottle Packs	BP6	3365	m0009yH_nE	
5	4/19/2017	8:11:16	WQ	Bottle Packs	BP6	3368	xh_j81cd3Ao	
6	4/19/2017	8:12:00	WQ	Bottle Packs	BP6	3375	inGVfy2s2s	
7	4/19/2017	8:12:02	WQ	Bottle Packs	BP6	3380	oQaF0x900A	
8	4/19/2017	8:12:05	WQ	Bottle Packs	BP6	3402	UYnG2zRlugg	
9	4/19/2017	8:12:08	WQ	Bottle Packs	BP6	3400	z5d11bXpYk	
10	4/19/2017	8:19:16	WQ	Bottle Packs	BP6	3395	cmvWU82v3Q	
11	4/19/2017	8:23:50	WQ	Bottle Packs	BP6	3405	qPGDxR2oBB4	
12	4/19/2017	8:23:52	WQ	Bottle Packs	BP6	3390	5qjHnN4i-o	
13	4/19/2017	8:25:16	WQ	Bottle Packs	BP6	3385	KWM9puO-Bu8	
14	4/19/2017	8:27:27	WQ	Bottle Packs	BP6	3370	OrvmyYLRVo	
15	4/20/2017	1:03:00	WQ	Bottle Packs	BP6	3390	dTM0yQ2wepY	
16	4/20/2017	1:07:07	WQ	Bottle Packs	BP6	3380	v0zXaaNHGU	
17	4/20/2017	1:16:16	WQ	Bottle Packs	BP6	3380	Wj8Dv0ne1Q	
18	4/20/2017	1:16:43	WQ	Bottle Packs	BP6	3395	Q5c8Cv9Qzw	
19	4/20/2017	1:17:10	WQ	Bottle Packs	BP6	3400	Y13upn63Ak	
20	4/20/2017	1:18:18	WQ	Bottle Packs	BP6	3395	9kqffkGUXs	
21	4/20/2017	1:19:34	WQ	Bottle Packs	BP6	3370	7aUAmptKc08	
22	4/20/2017	1:20:21	WQ	Bottle Packs	BP6	3370	pU49puyLk04	
23	4/20/2017	1:24:05	WQ	Bottle Packs	BP6	3395	gZ_WNGd3G8Y	
24	4/20/2017	1:25:00	WQ	Bottle Packs	BP6	3400	r1D55WG5j8	
25	4/20/2017	1:26:17	WQ	Bottle Packs	BP6	3385	w8unRyTq5Y	
26	4/20/2017	1:27:16	WQ	Bottle Packs	BP6	3380	Wj8Dv0ne1Q	
27								
28								
29								
30								
31								
32	4/20/2017	6:30:13	WQ	Bottle Packs	MC3T	3570	ko4nshF4c	
33	4/20/2017	6:32:00	WQ	Bottle Packs	MC3T	3570	5GYwL28DQ	
34	4/20/2017	6:33:12	WQ	Bottle Packs	MC3T	3570	MQZF1JHP4	
35	4/20/2017	6:35:02	WQ	Bottle Packs	MC3T	3590	9gagqfYnsE	
36	4/20/2017	6:45:19	WQ	Bottle Packs	MC3T	3575	2Eflm-boqoo	
37	4/20/2017	6:46:29	WQ	Bottle Packs	MC3T	3570	MIMULNTPWLM4	
38	4/20/2017	7:42:21	WQ	Bottle Packs	MC3T	3585	OvQnd7c95E	
39	4/20/2017	8:08:16	WQ	Bottle Packs	MC3T	3590	7o3c61P6Yk4	

1. Data Storage in Excel OneDrive
2. FileName: Report.xlsx [Data] tab

Excel Online

SGOPS Aerials

	A	B	C	D	E	F
1	Product	Type	Weight	Material	Remarks	PowerAppId
2	BP6	Bottle Packs	3375	3402		5fVwepgud8
3	ICPO01	Bottle Packs	3500	400		KCA6SEg84Q
4	ICPO02	Bottle Packs	1450	1500		Q5c8B8C7H0
5	AUC1	Bottle Packs	3160	1244		2p-3pV08EU
6	AUC1T	Bottle Packs	3526	3610		_mgpwtFy0
7	Gelpack 200g (using ICPO03 Gelpack bags)	Gel Packs	195	205 for CP0001		Vm2N0ag84-4
8	Geltrap 800g	Gel Packs	390	410 for AA6001/CPA6001		L7N2TQPS6H
9	ICPO03	Gel Packs	1050	1070 for CP0010A (without wt of box)		6p8r7c0uM
10	ICPO01	PCM	450	450 for VP09		7bUd8ayG7
11	ICPO03	PCM	0	99999		3A7WNTVh
12	ICPO03 Bag	PCM	295	300 for CPA003M		DcYhufu8uH
13	ICPO08	PCM	1967	2174 for VP17		K07-FUag8
14						
15						
16						
17						
18						
19						
20						
21						
22						
23						
24						
25						
26						
27						
28						
29						
30						
31						
32						
33						
34						
35						
36						
37						
38						
39						

3. Product Setup and range
4. FileName: Report.xlsx [Product] tab

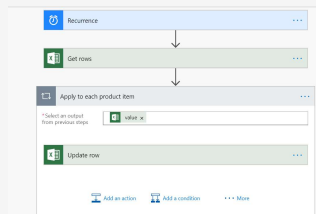
Excel Online

SGOPS Aerials

	A	B	C
1	Daily Production Qty	Daily Weight Check Qty	PowerAppId
2	0 to 280		13 UlwFIWGNfNE
3	281 to 500		20 pWc49pV-rgU
4	501 to 1200		32 zFJvtkNFUfo
5			
6			
7			
8			
9			
10			
11			
12			
13			
14			
15			
16			
17			
18			
19			
20			
21			
22			
23			

5. AQL Guidelines data for display

Workflow to Reset Counter



Recurrence

* Interval: 1 * Frequency: Day

Time zone: (UTC+08:00) Kuala Lumpur, Singapore

Start time: 2017-12-14T00:00:00Z

At these hours:

At these minutes: 30

Preview
Runs at 23:30 every day

[Hide advanced options ^](#)

Apply to each product item

* Select an output from previous steps: value x

Update row

* File name: /Aeris Ops Workflow/Weighing App/Report.xlsx

* Table name: ProdList

* Row id: Row id x

Product:

Type:

Minimum:

Maximum:

Remarks:

DayCnt: 0

Get rows

* File name: /Aeris Ops Workflow/Weighing App/Report.xlsx

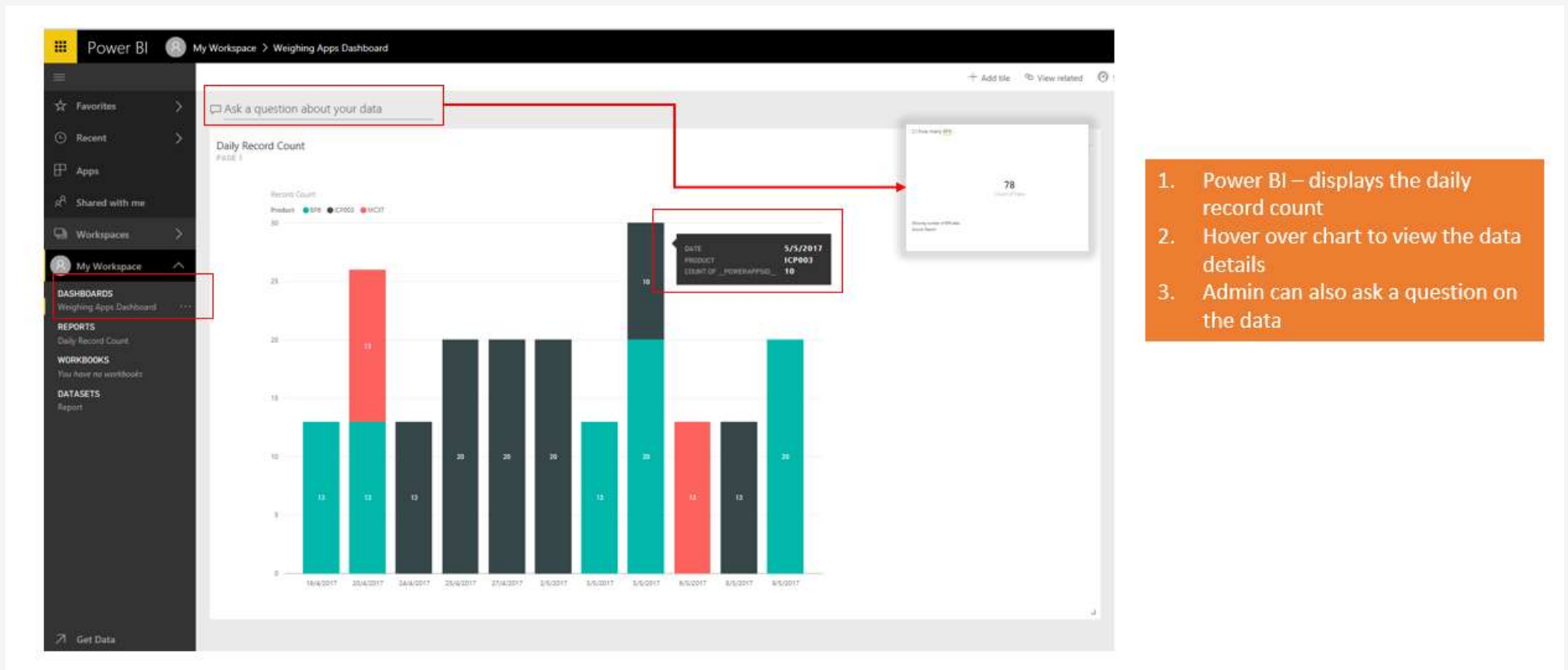
* Table name: ProdList

Top Count: Total number of entries to retrieve (default = all).

Skip Count: The number of entries to skip (default = 0).

[Hide advanced options ^](#)

Manager's Back-End View



Progress to More Complex Project 😊

GREEN PROJECT

The four screenshots illustrate the workflow for submitting an order in the CharterPod app:

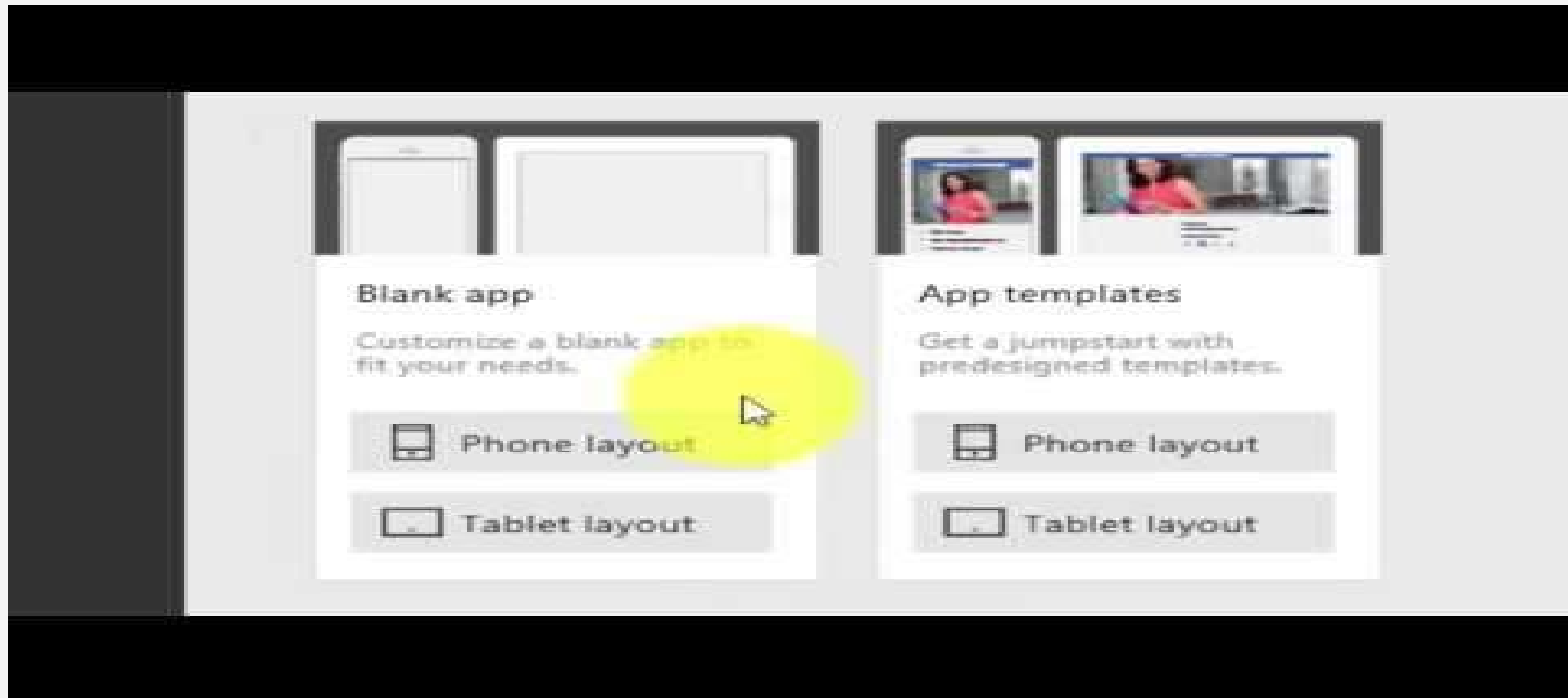
- Screenshot 1: CharterPod Home** - Shows a dashboard for Singapore and Malaysia with metrics for 'Useable' (197 for Singapore, 0 for Malaysia), 'Transfer' (0 for both), and 'CPSS' (0 for both). It includes a 'Shipper Model' dropdown set to 'CPD006' and an 'Operations' toggle. Buttons for 'View Orders' and 'Order' are at the bottom.
- Screenshot 2: Submitted Orders** - Displays a list of submitted orders. Two orders are visible: one for Singapore (SGD125) and one for Korea (SGD640), both for FedEx Express. A bottom bar shows status counts: 2 Submitted, 0 Approved, 0 WIP, 0 Collected, and 0 Delivered.
- Screenshot 3: New Orders** - A form for creating a new order. Fields include 'Order Type' (Customer Local), 'Leasing Days' (3), 'Dispatch From' (SG-SG-A), 'PO Number', 'Customer' (FedEx Express Singapore), 'Contract' (ASLF0061800001), 'Requested By', and 'ShipTo Final Destination' (Singapore). A 'Next' button is at the bottom.
- Screenshot 4: Order Items** - A screen for adding items to the order. It shows 'Product' (CPD006), 'Prod \$' (35), 'Cond.\$' (0), 'Quantity' (1), 'Days' (3), and 'Item \$' (105). It also includes a toggle for 'C' and 'A' modes, a dropdown for 'PCM05', and an 'Add Items' button. A table at the bottom lists the items with their quantities and prices. 'Discount Days' (0) and 'Total Price \$' (210) are also shown. 'Back' and 'Next' buttons are at the bottom.



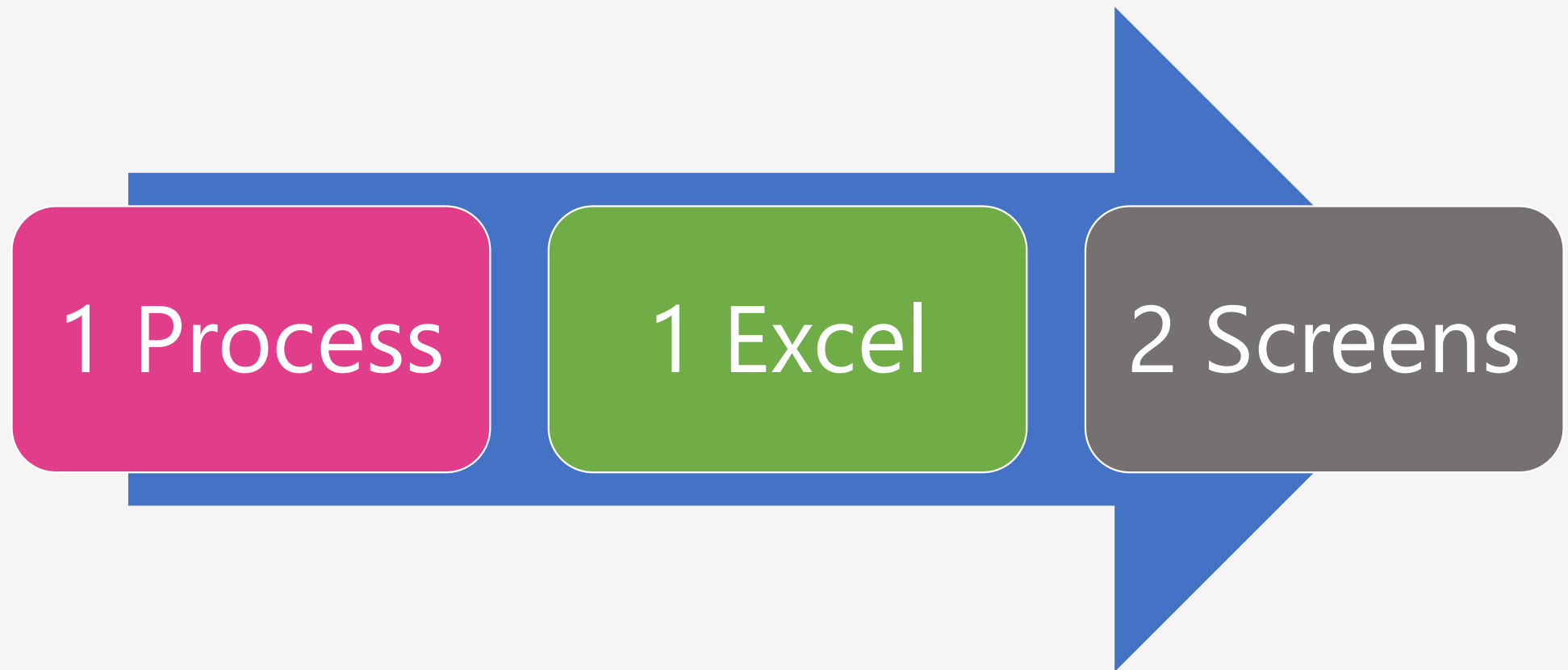
8 Mins Video

Submit Order → Approve Order → Checkout Inventory → Return & Refurbishment of Inventory

2 Minute App Making Challenge



Let's Get Started with OneApps



PowerApps & Flow D-I-Y Immersion Workshop (2~3hrs)

- Pre-Workshop Requirements Gathering (at least 1 week prior)
- Objective of the automation Vs Current Process
- Workflow design – Frame the complexity and define the workshop scope and the post workshop scope (if required)
- Data Source/(s) – Current / New? Workshop 1~2
- Sketch Paper Screens – Keep to 2~3
- Dashboard & Reporting (Optional)
- Basic Concepts
- Templates & Guided Practice Steps

Framing the Workshop for Simple approval Use Case

1. Since file has been digitalised, propose to drop file into a designated SharePoint library. This library will be made add-only access to submitters. This may be simpler than to re-create the fields in PowerApps.
2. Action of dropping file into the folder will render a valid submission.
3. Approver goes into document folder and change status to Yes → triggers back email to submitter. If not approve, a rejection mail will also be sent. (provided submitters are on Office365 with outlook enabled). Create 1 level in workshop and participants build 2 additional levels for hands-on.
4. 1 Simple chart in Power BI / Excel Power Query to query online status of these submission.
5. 2nd – 3rd week October.

Contact DataDogs SG

Email | sales@datadogs.sg

Website | <http://www.datadogs.sg>

LinkedIn | <https://www.linkedin.com/company/datadogsg>



*Intuitively design
and develop cost
effective
productivity
solutions*