

---

# DATA INTEGRITY SERVICES, INC



[www.diservicesinc.com](http://www.diservicesinc.com)

[josh.jacob@diservicesinc.com](mailto:josh.jacob@diservicesinc.com)

305 304 55 74

*WE STRIVE TO BE A CLOUD SOLUTIONS  
PROVIDER TO HELP BUSINESSES MAKE  
BETTER DATA – DRIVEN DECISIONS*

---

# Refactoring, Building & Maintaining Azure Data Factory - ETL Pipelines

*Optimizing Azure Data Factory Pipelines for Performance & Scalability*



Azure  
Data  
Factory



Azure  
Cosmos  
DB



Azure  
DB  
For POSTGRES

---

# The Challenge



**Inefficient ADF Pipelines**  
causing high processing  
times and costs



**Need for secure & scalable  
ETL workflows** with Azure  
Cosmos DB & PostgreSQL



**Data silos & performance  
bottlenecks** impacting  
analytics



**Lack of proactive monitoring  
& issue resolution** for  
seamless operation

# What We Offer

## Refactoring, building, and maintaining Azure Data Factory-ETL pipelines for

**Performance Optimization** – Reduce latency & processing costs.

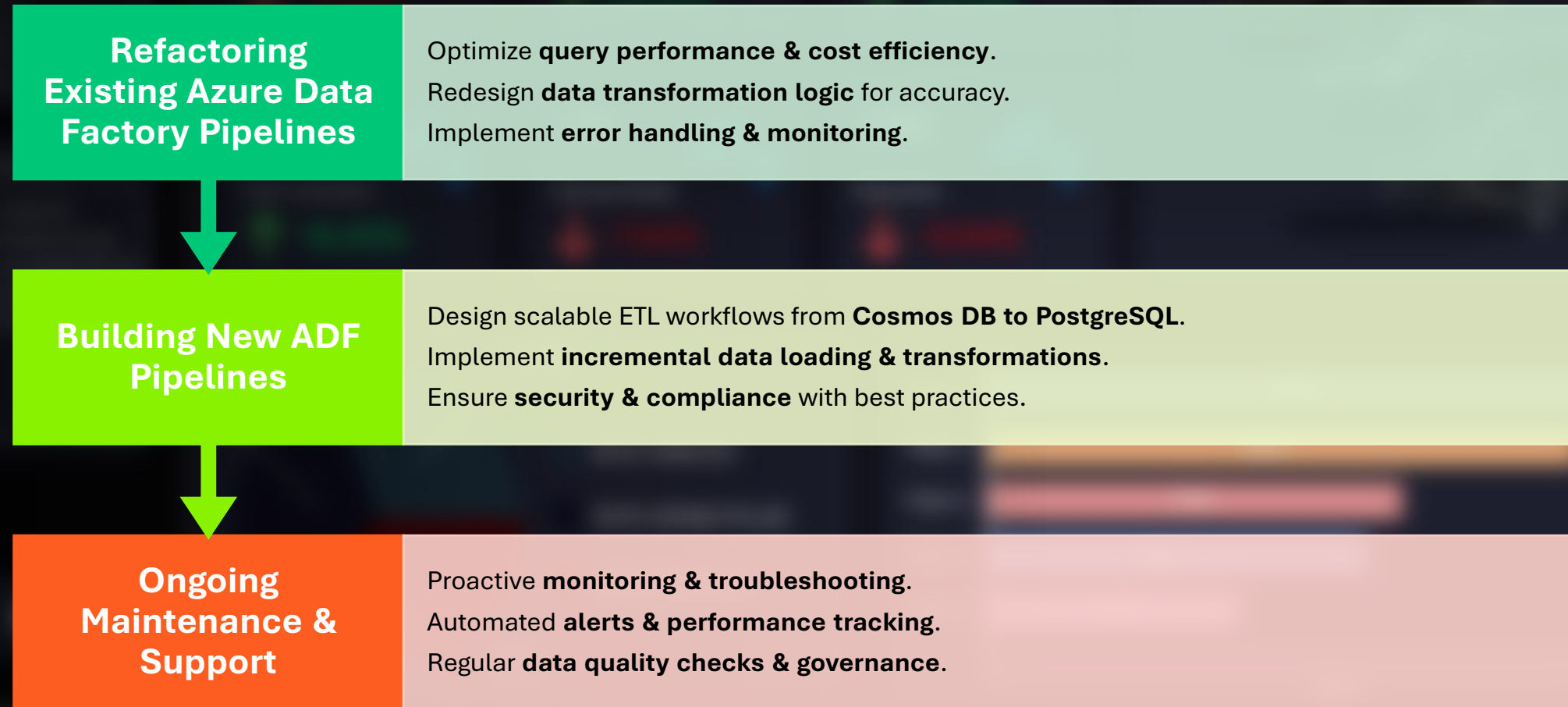
**Seamless Integration** – Connect **Azure Cosmos DB** & **PostgreSQL** efficiently.

**Scalability & Reliability** – Future-proof data transformation workflows.

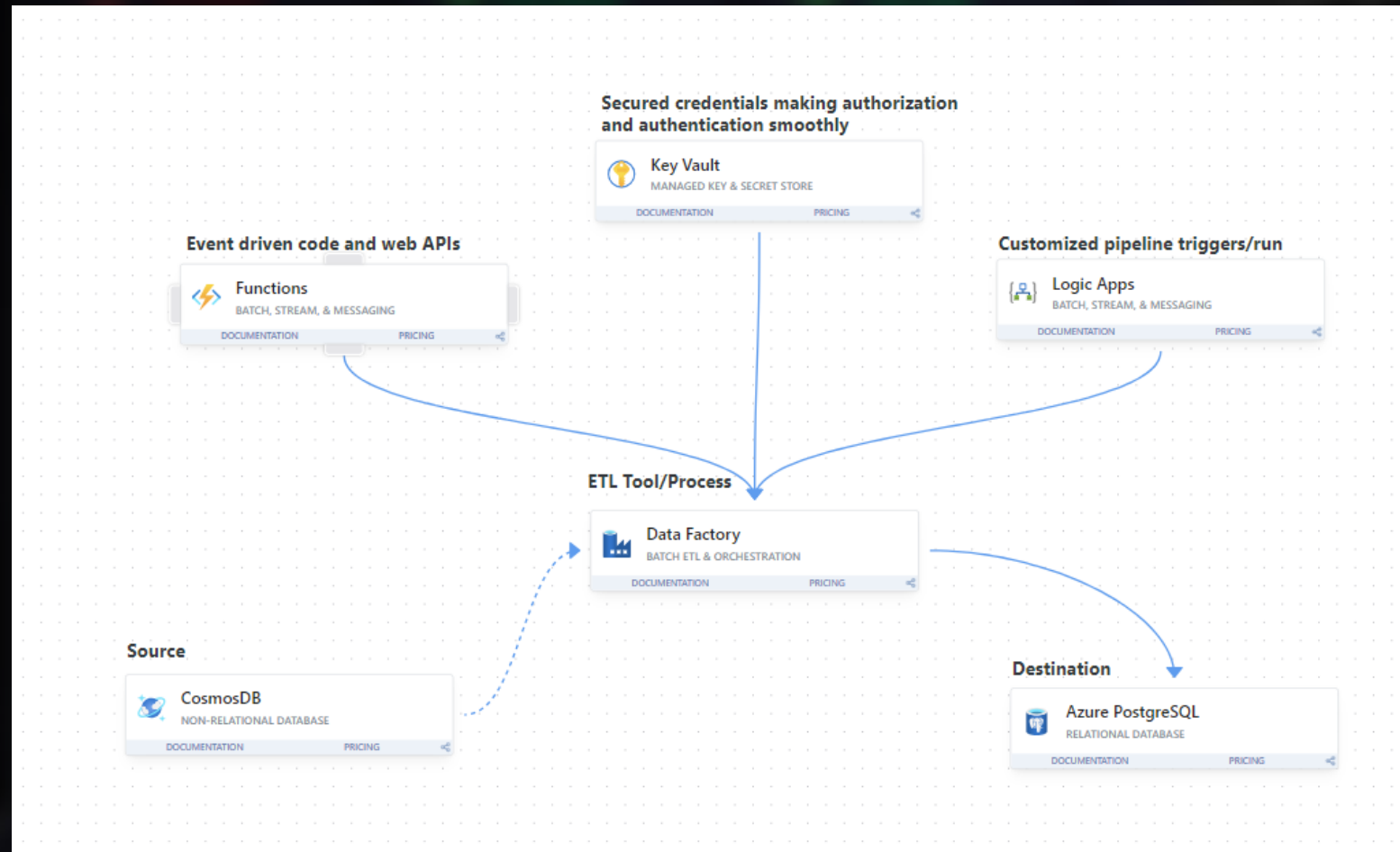
**End-to-End Monitoring & Support** – Ensure pipeline health & minimize failures.



# What We Offer

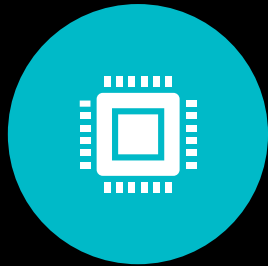


# Sample Architecture of Migration

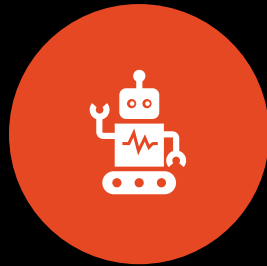


---

# Key Benefits



IMPROVED  
PERFORMANCE –  
FASTER DATA  
PROCESSING &  
REDUCED COSTS.



SCALABILITY –  
FUTURE-READY ETL  
PIPELINES  
SUPPORTING  
BUSINESS GROWTH.



RELIABILITY &  
MONITORING –  
AUTOMATED ISSUE  
RESOLUTION &  
ALERTING.



SECURITY &  
COMPLIANCE –  
ENSURING DATA  
GOVERNANCE BEST  
PRACTICES.

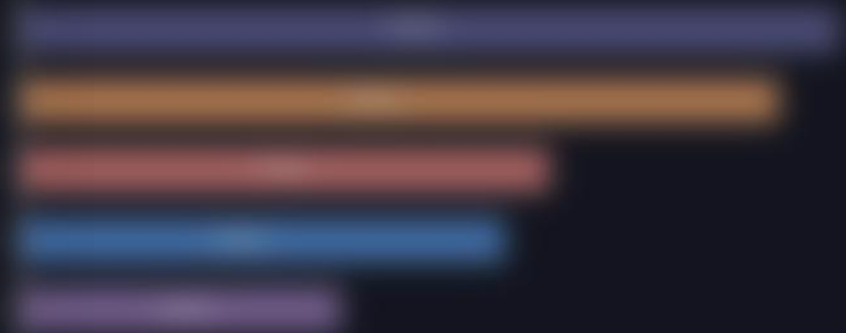
---

# Key Deliverables

- **Optimized & Scalable ETL Pipelines** – Faster, cost-effective data transformations.
- **Comprehensive Data Integration** – Seamless data flow from **Azure Cosmos DB to PostgreSQL**.
- **Automated Error Handling & Alerts** – Proactive issue resolution.
- **Secure & Compliant ETL Workflows** – Data governance & access control.
- **Performance & Cost Optimization** – Reduced latency and improved efficiency.
- **End-to-End Documentation & Knowledge Transfer** – For easy management.

# Cost-Free Proof of Concept (PoC)

We offer a **free PoC** to showcase the benefits of Power BI before committing to a full migration. Experience improved analytics and performance risk-free!

A blurred screenshot of a dashboard or report, showing various data visualizations and text elements in different colors.



---

# Why Choose Us?

**Azure Data Engineering Experts** – Specializing in ADF, Cosmos DB & PostgreSQL.

**End-to-End Service** – From optimization to monitoring & support.

**Secure & Scalable Solutions** – Designed for enterprise use.

**Proven Track Record** – Success in complex data migrations & ETL automation.