



Azure OpenAI and its Services

Agenda

- Introduction
- Language Service
- Translator
- Content Moderator
- Computer Vision
- Face API
- Custom Vision
- Speech Service
- Document Intelligence
- Bot Services
- Anomaly Detector
- Health Insights

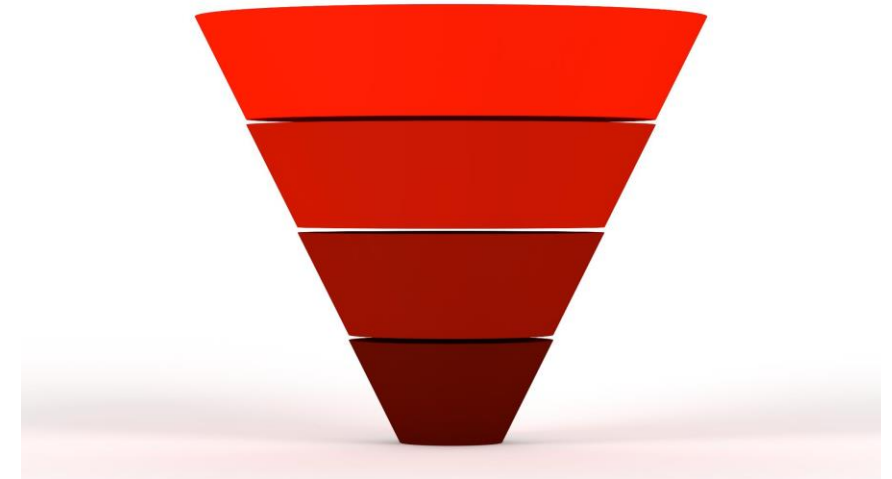
Introduction

- Azure OpenAI: A Powerful AI Resource
 - Processes and understands text-based data
 - Can be utilized for various applications
 - Includes features such as Chat, DALL-E, and Completions



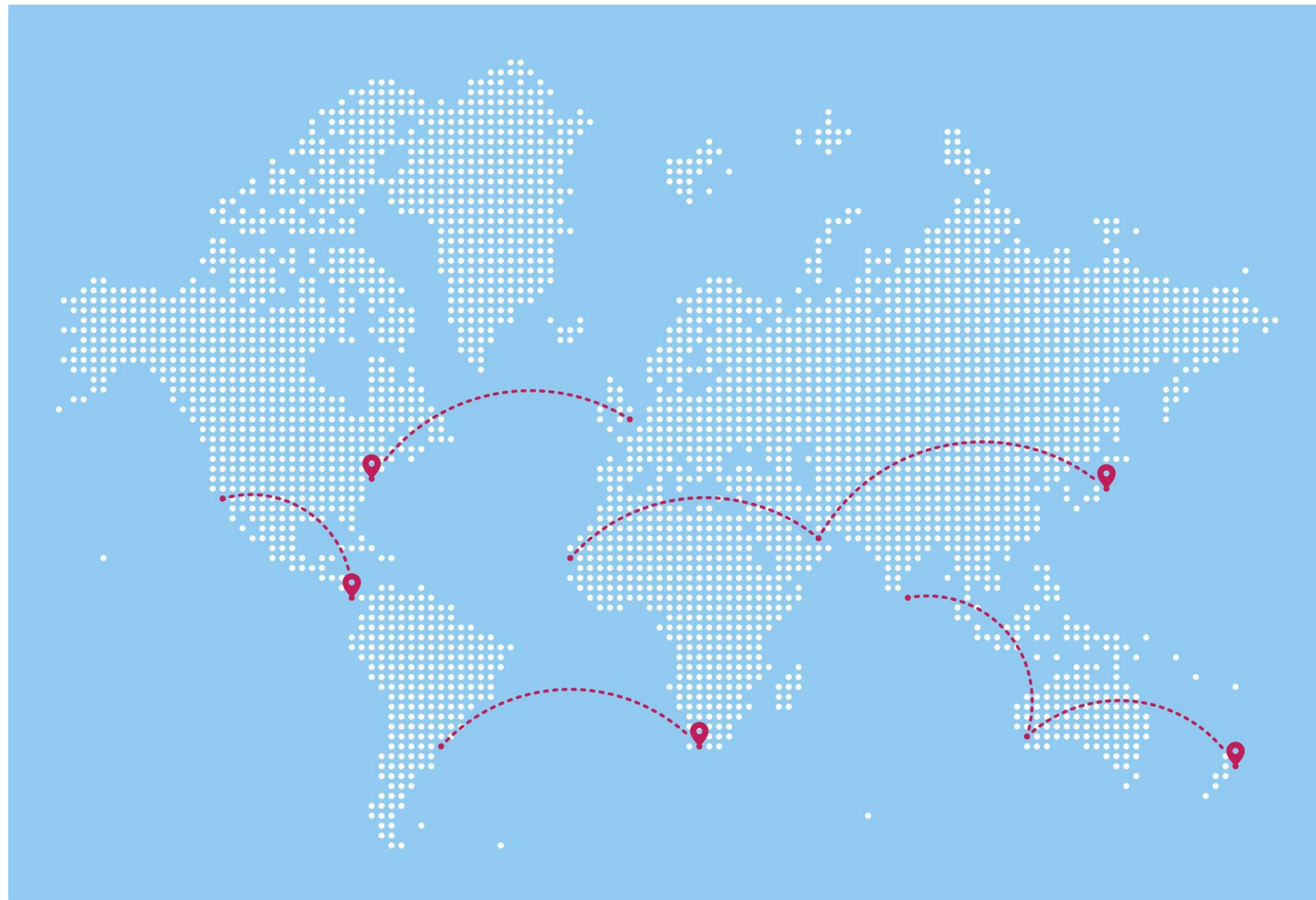
Language Service

- Used for text processing and natural language understanding
 - Includes functions like text classification and sentiment analysis



Translator

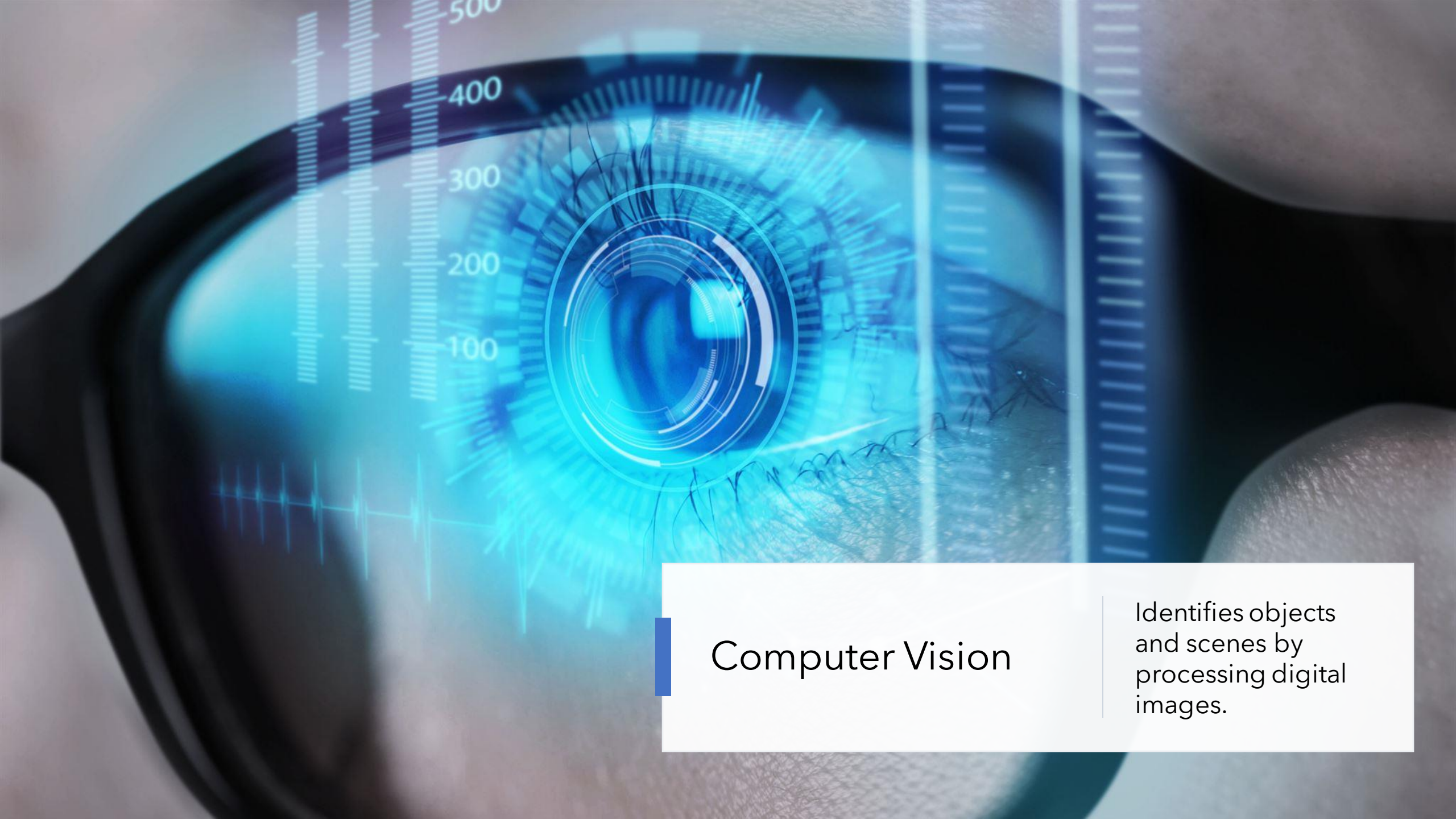
Capable of translating between
over 100 languages and
dialects



A woman in a grey blazer and light blue shirt is holding a silver microphone with a black foam cover. She is also holding a smartphone in her left hand and a rolled-up white document in her right hand. The background is a dark grey gradient.

Content Moderator

Detects and processes unwanted or risky content



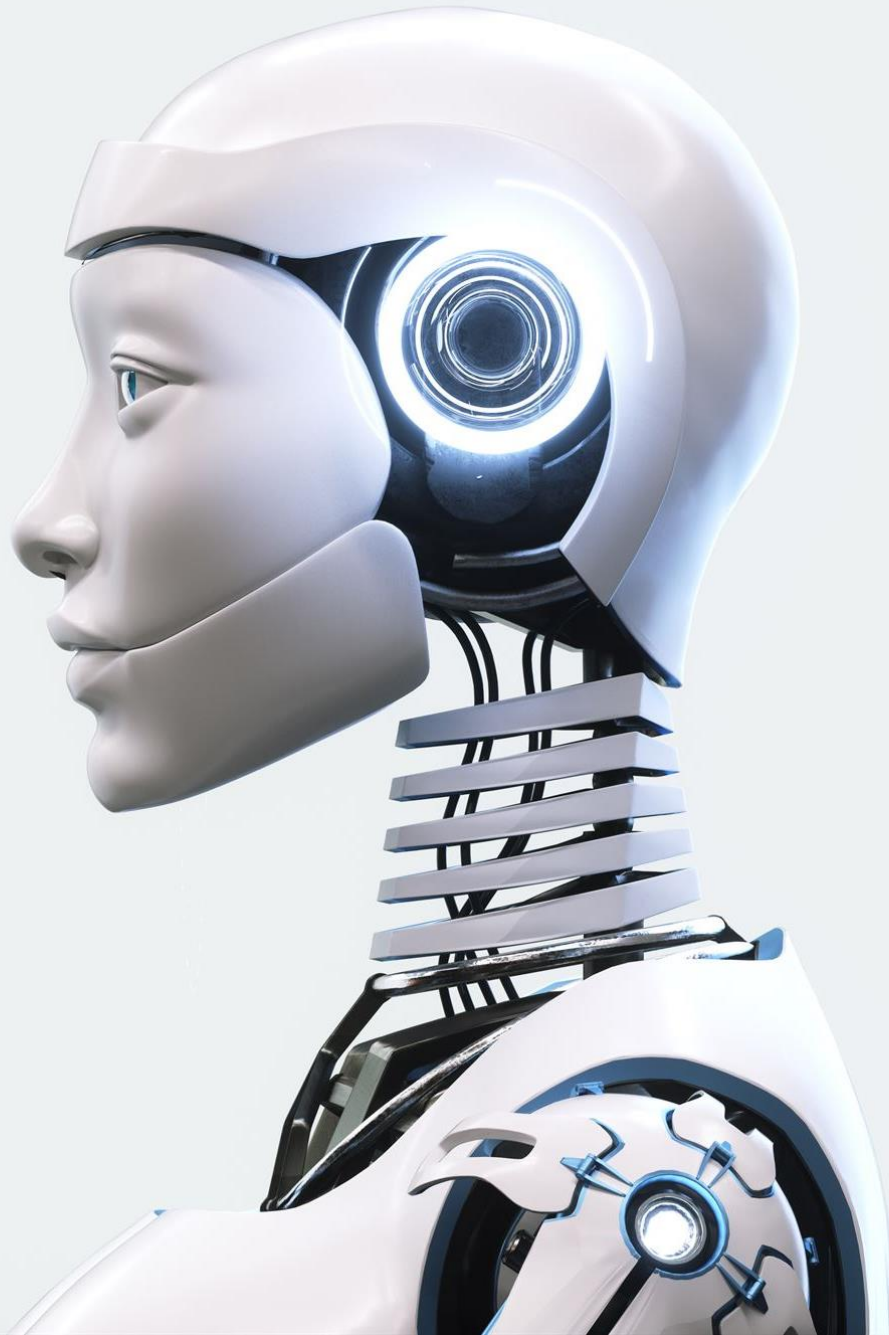
Computer Vision

Identifies objects and scenes by processing digital images.

Face API

Face API detects and identifies people and emotions in images.





Custom Vision

- Custom Vision: AI for Image Categorization
 - An AI service that helps categorize images

Speech Service

- Converts speech to text
 - Transcribes spoken words into written text
- Reads text
 - Converts written text into spoken words
- Translates
 - Translates text or speech from one language to another
- Recognizes speakers
 - Identifies individual speakers based on their voice



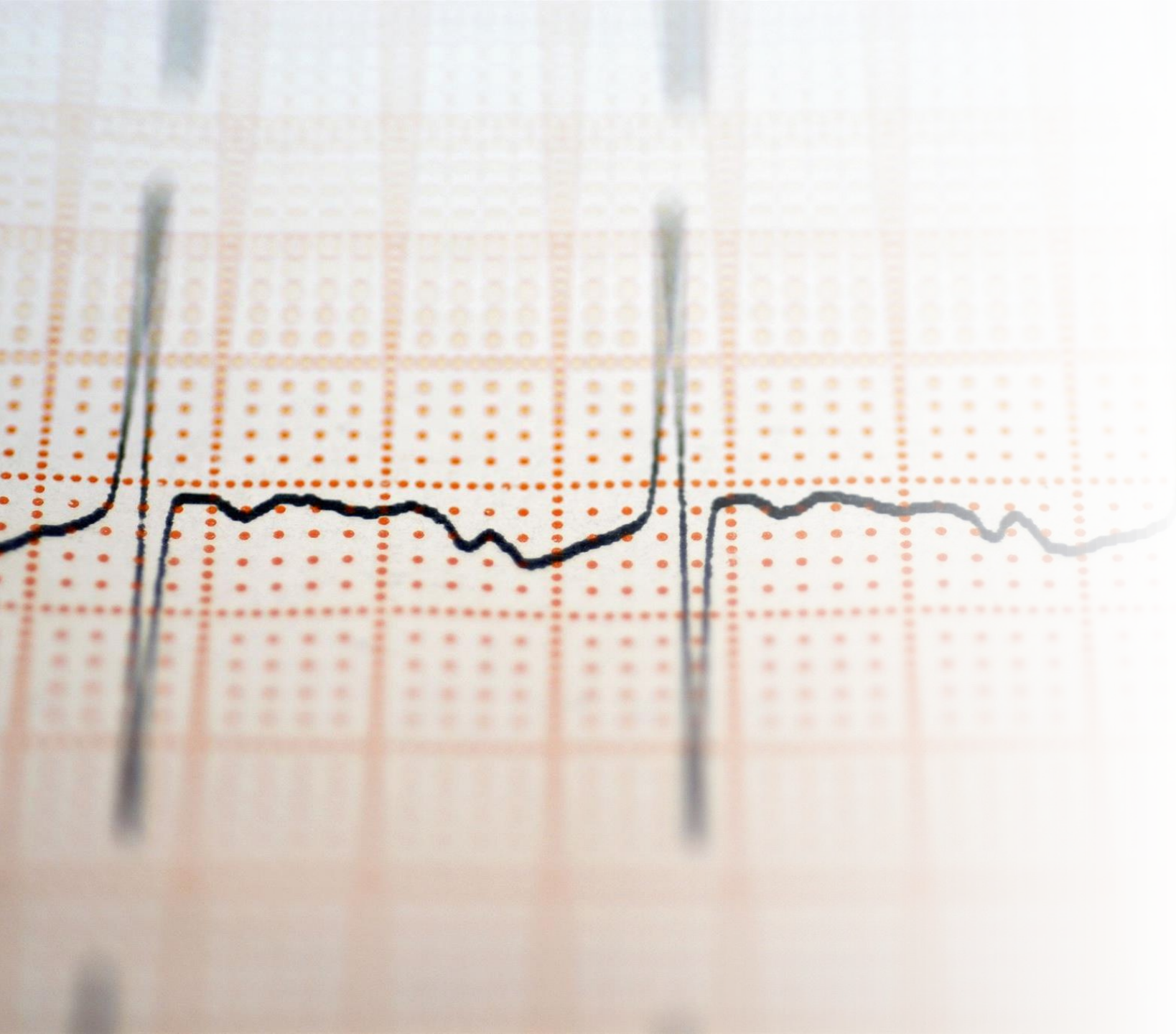
Document Intelligence

Converts documents into usable data



Bot Services

- Enables the creation of bots
 - Bots can communicate across various channels



Anomaly Detector

Identifies potential issues early
on

Health Insights

- Analyzes health data to assess disease risk
 - Offers treatment suggestions



Personalizer

Personalizer creates personalized experiences for each user



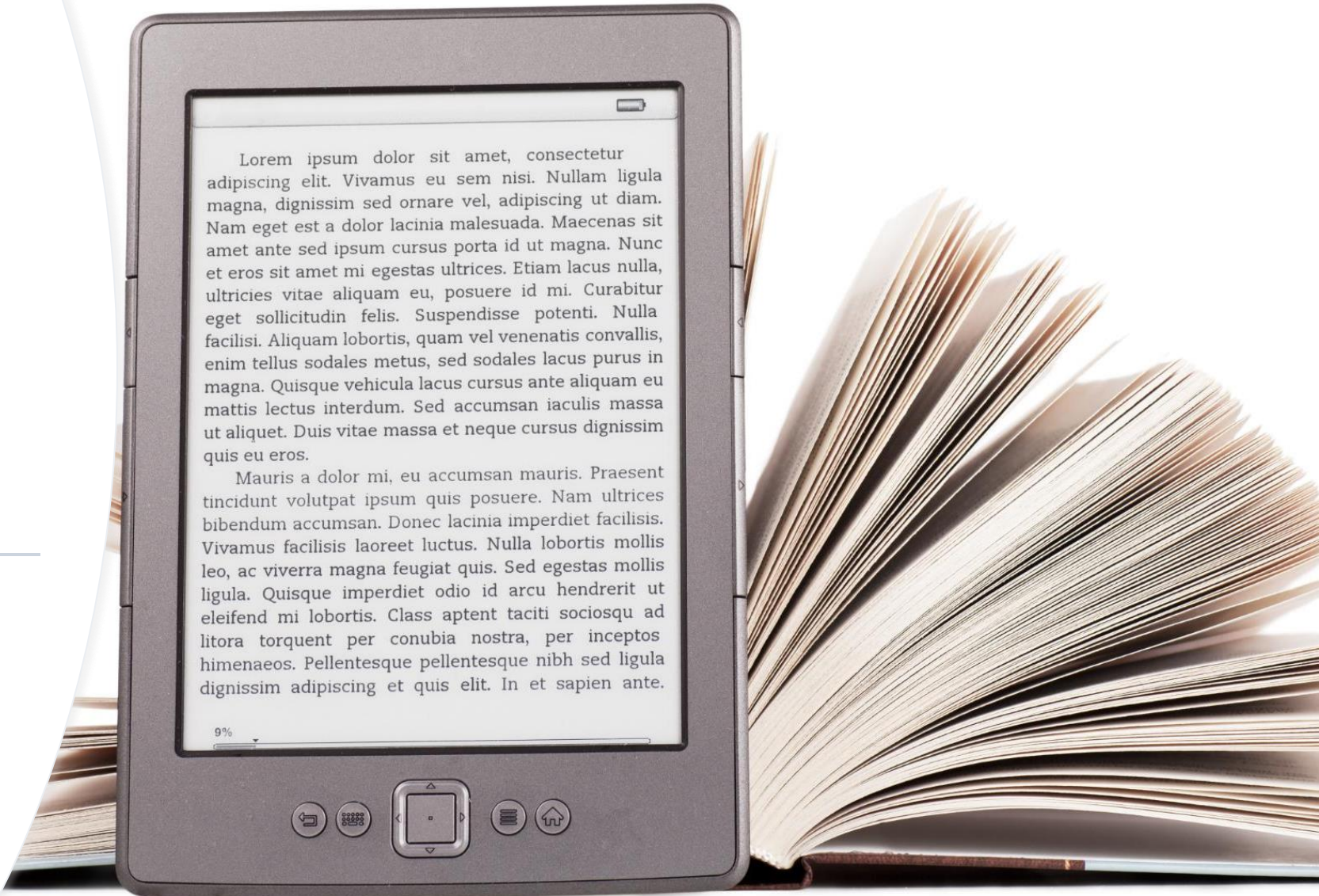
Metrics Advisor

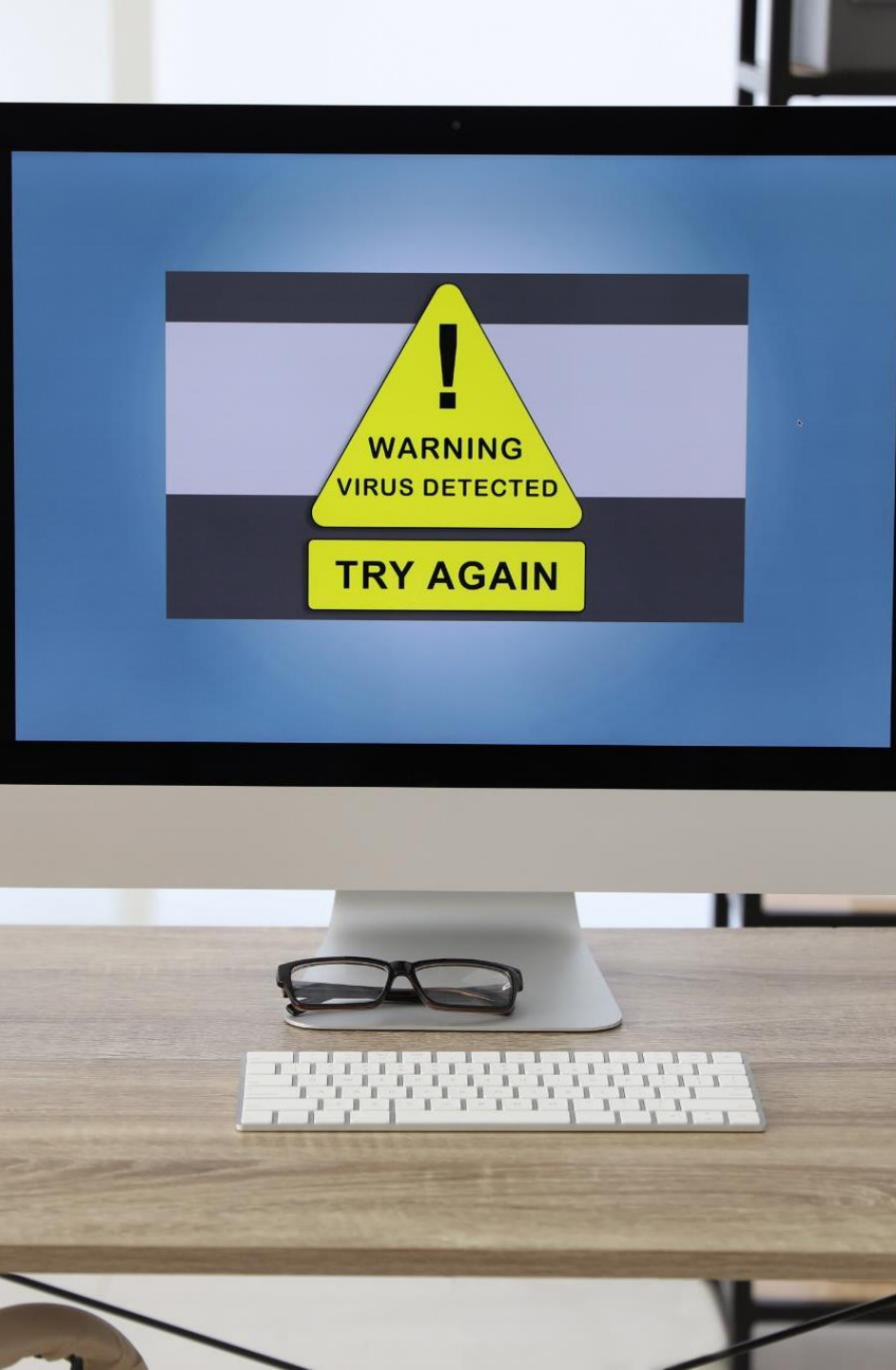
- Monitors business performance metrics
 - Identifies operational issues



Immersive Reader

Assists users in reading and understanding text





Content Safety

- Identifies unwanted or dangerous content
 - Online platforms
 - Social media sites
 - Applications

Speaker Recognition



- Speaker Recognition
 - Used for voice-based biometric authentication

Language Understanding (Classic)

- Text and language processing capabilities
 - Text classification
 - Keyword extraction



QnA Maker (Classic)

Used to create text-based question-and-answer applications

Conclusion

- Text Processing
 - Utilize services for text analysis and processing
- Image Analysis
 - Use services for analyzing and processing images
- Speech Recognition
 - Employ services for recognizing and transcribing speech
- Content Moderation
 - Utilize services for moderating and filtering content
- Other Fields
 - Choose the most suitable service for your specific needs