

Boost employee onboarding and retention with MR

DataMesh Director

DataMesh



Opportunities in employee training and retention

169M

industry workers in Southeast Asia will need to either develop new or improve skills by 2030

56%

of deskless employees believe additional training will improve their chances in a job market that is constantly changing

74%

of business executives say frontline empowerment can significantly increase productivity over time

Boost employee onboarding and retention with MR

DataMesh + Azure + MR

DataMesh Director helps manufacturing and construction companies overcome talent gaps with mixed reality trainings that help front-line workers master skills quickly, regardless of equipment complexity or training location. Our GUI tool helps you turn CAD files into animated, content-rich trainings that trainees can interact with using a HoloLens 2 device.

Create a successful workplace for employees



Higher output

Improve employee output and reduce employee errors by giving them the comfort and skills they need to be productive

Safer workplace

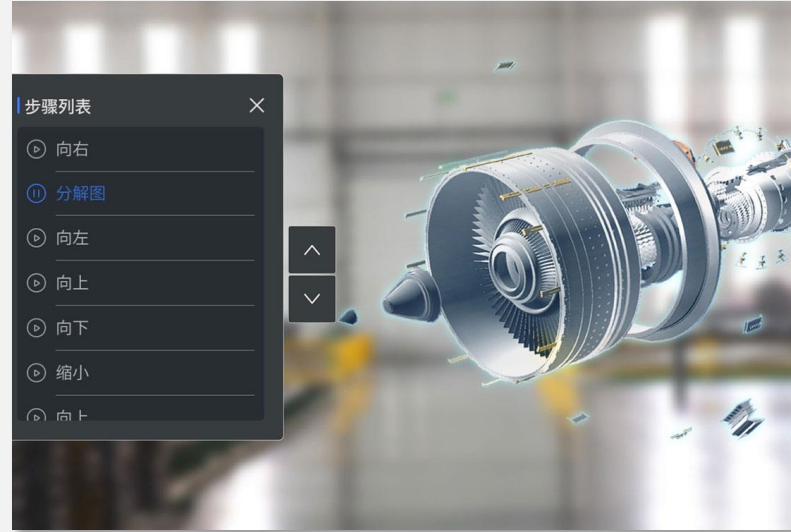
Train employees on complex equipment without the risk of harm and reduce work accidents that could hurt team members

Faster onboarding

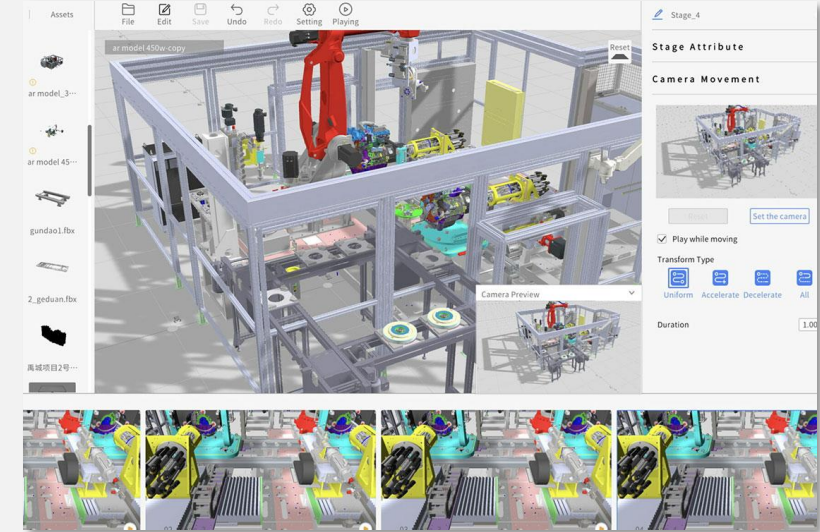
Help employees get the skills they need quickly and efficiently, improving employee confidence and reducing turnover



Trainees can watch videos and interact with equipment anywhere, any time



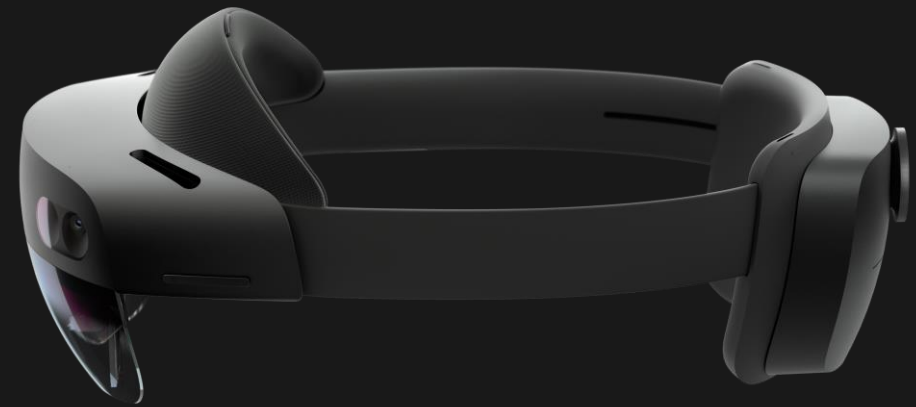
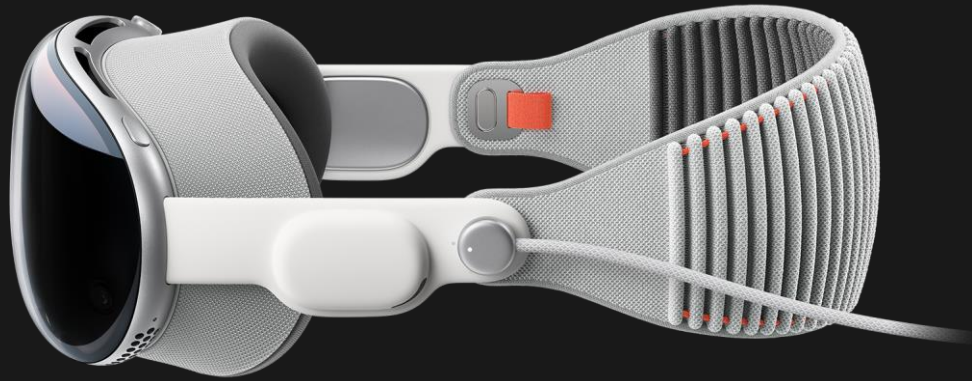
Complex models/processes are easy to visualize and manipulate during training



Interactivity and animation are quickly added using an easy-to-use GUI

Create a successful workplace for employees

Democratize Spatial Computing



Solution built on Microsoft Azure

Aggregate, analyze and react in real-time



Integration to
upload solution
telemetry



Storage to scale
solutions without
latency



Visualization to
surface solution
insights



Analytics to
predict and
plan



Security to
protect
solution data

Bryan Zhou, IS Manager, Autoliv



Autoliv's application of MR technology to the new staff training has achieved remarkable results. DataMesh Director restores the structure of the automatic sewing machine in 3D. Using this virtual sewing machine, new staff can have a full understanding of the equipment's structure and standard operation process and trainers can complete the system training without the need for a real machine. This solution solves for the limited availability of training machines and space, and greatly shortens the learning curve for new staff.

Start improving your operation with IoT



Contact us to discuss how we can help:

service@datamesh.com

Learn more about our IoT and Azure solution:

<https://www.datamesh.com/datamesh-director>

DataMesh

About DataMesh

DataMesh enables traditional enterprises to incorporate smart design, fasten service deployment, and implement low-cost planning processes through Digital Twin and Mixed Reality. The DataMesh Digital Twin platform empowers frontline workers by connecting data-driven experiences, digital twin, and workflows, helping them be more confident and effective in completing their tasks.