

DEEP SPACE

Mission Critical Construction AI



Problem



Problem



data



Problem



● Problem

Construction Projects can lose big money when built on **bad data**

Cost Blowouts and Project Delays

Rework and Quality Issues

Wasted Resources

Solution



Solution

Turn your messy project data into a
Smart Construction AI.



Smart data handling
– it learns as it goes.



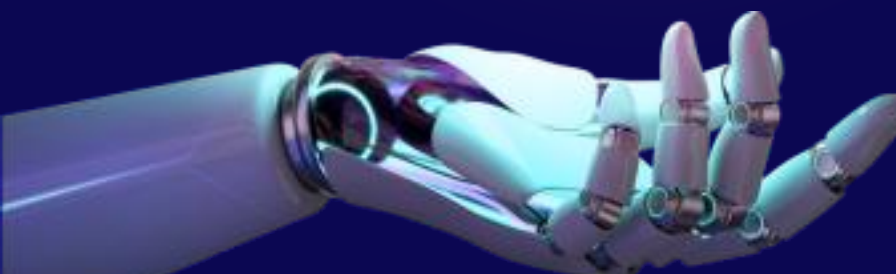
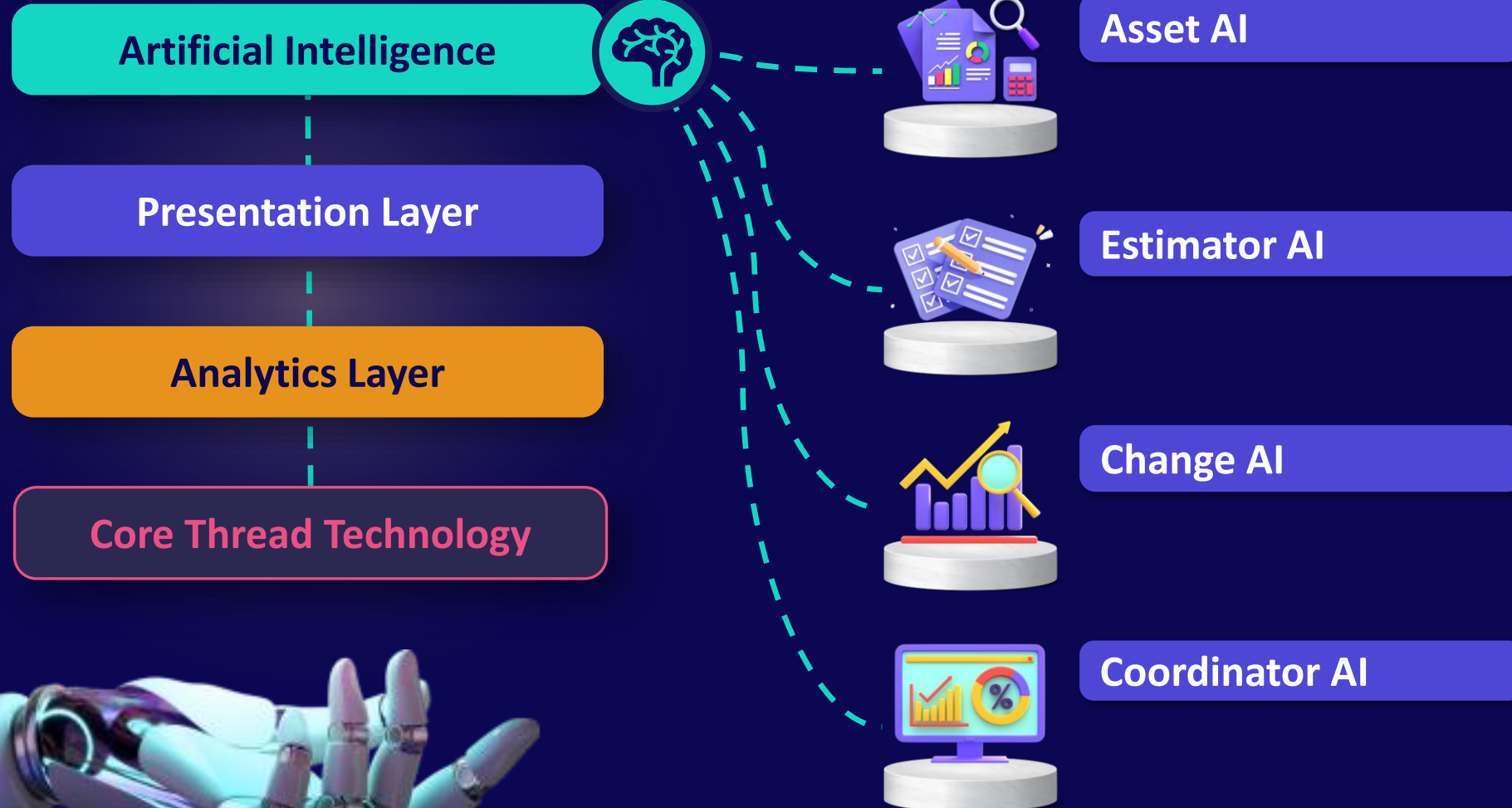
A user-friendly dashboard that
talks to your other tools.



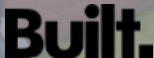
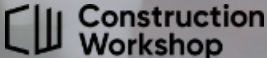
Insights that not just predict,
but also advise on next steps.

Solution

Mission Critical Construction AI for your team.



Proven



Stories



John Inifer – Lendlease

Senior Project Manager, Building VIC

Testimonial:

“... the complexity of this project demanded an intuitive and effective solution. Deep Space has been transformative in our approach to this project. Its seamless integration and AI solutions have empowered us to drive efficiency and ensure timely delivery, **even in the face of the most complex challenges**. Deep Space ... significantly de-risks our project.”



Amber Haddock - Built

Digital Engineering Manager

Amber and Built have used Deep Space on multiple projects, most recently on the **Atlassian Tower** project in Sydney. It has been used to improve model quality, de-risk, and improve performance of the entire design and construction team, responding to TfNSW and Dexus project mandates.



Clifford Wilson – Gammon Construction (HK)

Senior BIM Manager

Hong Kong Terminal 2 Expansion Works project has data requirements to deliver over 1 million assets, and they have just renewed for 2nd of 4 years. They performed internal ROI calculations on a real sub-section of their project and determined Deep Space could save them **7 digital construction human resources**, which represents a massive saving and efficiency increase.



Clive Parsons - Mirvac

Director, Digital Construction Office, Construction

Deep Space has worked with Clive over 3 years to automate and standardise **Enterprise** project reporting. This has initially assisted DCO and now PDM (Design Managers) to track progress and make good decisions. We are now rolling out Deep Space to Digital Construction and Estimation teams.

Estimator AI

Change AI

Core AI

Asset AI

Coordinator AI

Roles



Asset AI



- Construction Managers
- Commissioning Managers
- Asset Managers
- Facility Managers



Change AI



- Project Managers
- Design Coordinators
- BIM Managers
- Quality Assurance Teams



Estimator AI



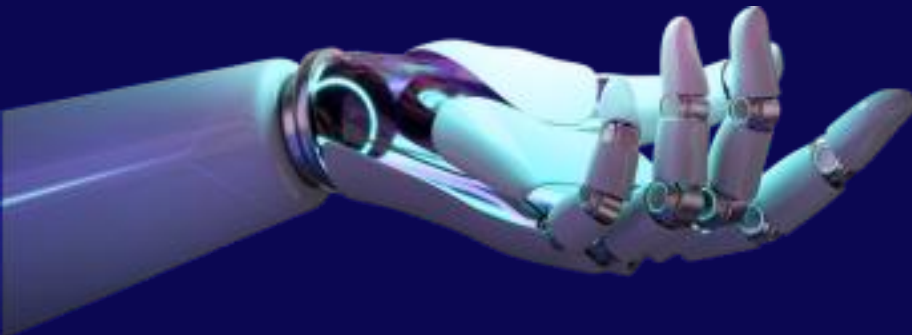
- Cost Estimators
- Quantity Surveyors
- Procurement Managers



Coordinator AI



- Project Coordinators
- BIM Coordinators
- Construction Managers
- Design Teams



Implementation

From Projects to Enterprise



Product

Super Schedule

Overview | Sheets/Views | Model Elements | Audit Check | Super Schedule Builder

Revit Models (Disciplines): 63
Revit Model Elements (Disciplines): 2M
Revit Drawing Sheets (Disciplines): 7746
Rooms in models: 7746
Revit Views: 34.13K

DEEP SPACE

Home | Core AI | Asset AI | Estimator AI | Change AI | Coordinator AI | Revizto Coordination | Enterprise Coord | Workspace | Integrations | Automations | System App

Rail Integration Systems

Overview | Location | Time | Priority | Age | Issues | ROI

Created Issues (total): 72689
On Going Issues: 4004
Closed Issues (total): 68685

Clash: 253
Regular: 167
Sheet: 3584

Issue Type: Clash, Regular, Sheet

Issues by Discipline: Drain... OK (15.1%), Civil Structures OK (3.44%), (Blank) OK (6.7...), OHLE OK (7...), RDS OK (13.55%), CAD 2K (47.8%)

On Going Issues Trend

Created Issues total: 13827
On Going Issues: 4988
Closed Issues total: 8839

Clash: 4607
Regular: 214
Sheet: 167

Issues Created this week: 1067
Avg. days taken to close issues: 81.14
Issues Closed this week: 139

Created & Closed by week

On Going Issues Trend

Issues Created and Closed over time

Summary

Deep Space Core AI

What disciplines are creating the most critical and major issues?

To determine the disciplines that are creating the most critical and major issues, we need to analyze the "Discipline" and "Level" columns from the provided data. Here is the breakdown: Critical Issues: MEP vs MEP 2 | Electrical | Fire | Hydraulic | Mechanical | Major Issues: MEP vs MEP 2 | MEP vs STC | Electrical | Structural | Tech 1. From this analysis, we can see that the discipline "MEP vs MEP 2" is creating the most critical and major issues, with a total of 5 issues.

Who is taking the most days to close out issues?

To determine who is taking the most days to close out issues, we need to analyze the "average time to close_out" column from the provided data. Here is the breakdown: Electrical: 69.25 days | Mechanical: 69.11 days | Medical Gas: 46.95 days | Fire: 27.79 days | Structural: 23.55 days | Tech: 17.13 days. From this analysis, we can see that the discipline "Structural" is taking the most days to close out issues, with an average of 23.55 days.

What else do we know about hydraulic? who are they clashing with the most?

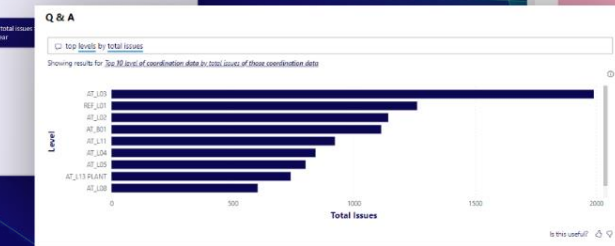
From the provided data, we can gather the following information about the hydraulic discipline: Hydraulic has created a total of 4988 issues - there are currently 4988 on-going issues in the hydraulic discipline. Hydraulic has closed 0 issues in the current week. Hydraulic has created 12 issues in the current week. Hydraulic has closed a total of 4988 issues. The average time to close an issue in the hydraulic discipline is 87.21 days. Regarding clashes, the hydraulic discipline is clashing with the following disciplines the most: Mechanical (7388 clashes), Fire (3584 clashes), Mechanical (214 clashes). These numbers indicate that hydraulic is clashing the most with the mechanical discipline, followed by fire and mechanical disciplines.

Q & A

Ask a question about your data

Try one of these to get started

- what is the total issues by issue type
- what is the total issued by clash category
- top levels by total issues
- show me total issues the last year



Embedded Domain Intelligence



Luke Johnson, CEO/CTO



Michael Clothier, COO

Proven Domain Knowledge of Founding Partners

Industry Relationships

5+ years in front of the competition

Proprietary Core Thread Technology

Easy setup and App-based solutions

Virality + Traction with User base

DEEP SPACE

**Mission Critical
Construction AI**

