



# TestDirector

A great tool for agile Test Management and Incident Management, capable of full integration with JIRA, OTRS, GitLab, Active Directory and LDAP. TestDirector can help everyone who needs to effectively manage the entire testing process and allow them to plan their work clearly and strategically.

## Product features

Test Case Management

Campaign creation

Test analysis and test execution

Test planning

Running tests

Integration with Jira, GitLab OTR, Active Directory, LDAP

Storage of data and tests

Issue management

Reporting

Managing users and user roles

Diary



Use the practical tools to control the individual steps of your work.

### Function:

- Set of functions from analysis through planning to test execution
- Great storage of tests
- Variably configurable reporting
- Complete bug management process
- Configurable notification templates
- Advanced request management
- Effective role and feature management
- Active Directory
- Custom fields

### Benefits:

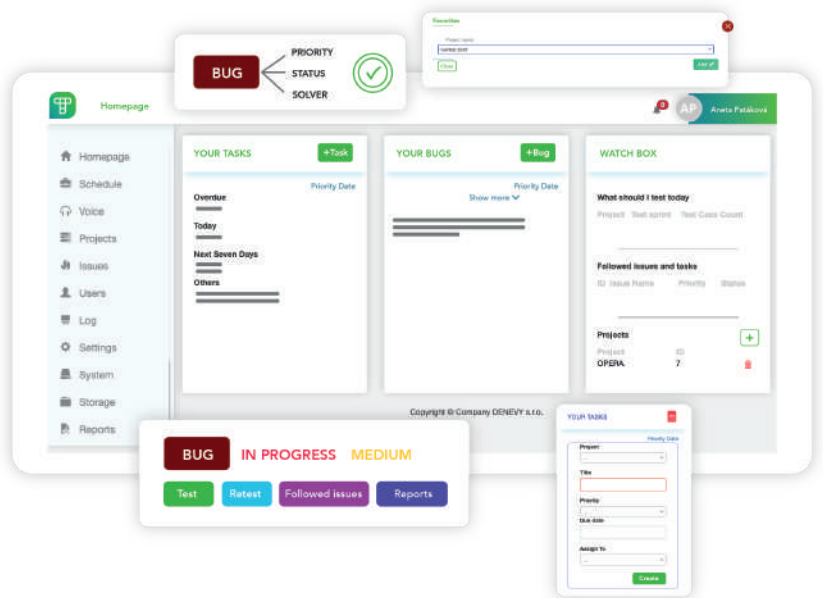
- Effective implementation of Test processes
- Easy integration with JIRA, GitLab, OTRS Active Directory and LDAP
- Effective reporting and exports
- Clear Dashboards
- Configurable Widgets
- Requirements mapping and detailed overview about their status
- Using proven and reliable technology

Denevy s.r.o. company comes with a sophisticated TestDirector solution designed to simplify and streamline the test process. Test Case Management system TestDirector is designed for both project managers and technical professionals and has a number of functionalities that help streamline and simplify access to the tests. TestDirector offers a comprehensive and clear way of working and it's fully compatible with Jira, GitLab, OTRS, Active Directory and LDAP.

# Dashboard

Dashboard serves as a start page after logging in TestDirector system. Here you can see the most successful project or sprint. It shows the status of sprints belonging to the user and the number of issues that are fixed.

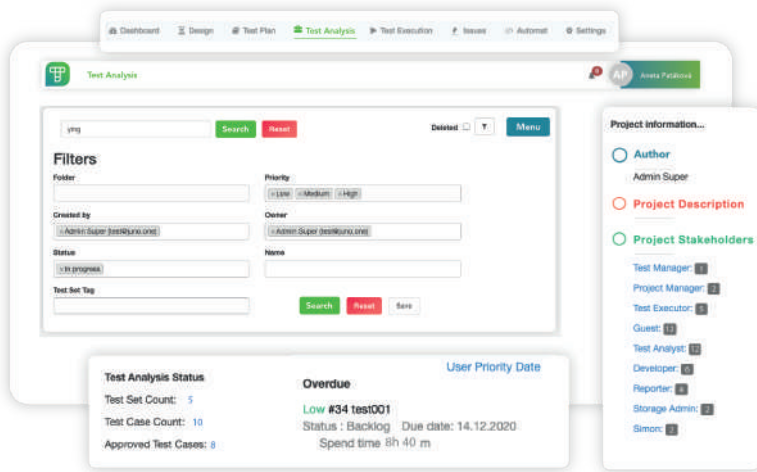
- Quick overview of everything in one place
- Overview of unresolved tasks
- Overall statistics across projects
- Graphically friendly appearance
- Test plan tools



# Test analysis

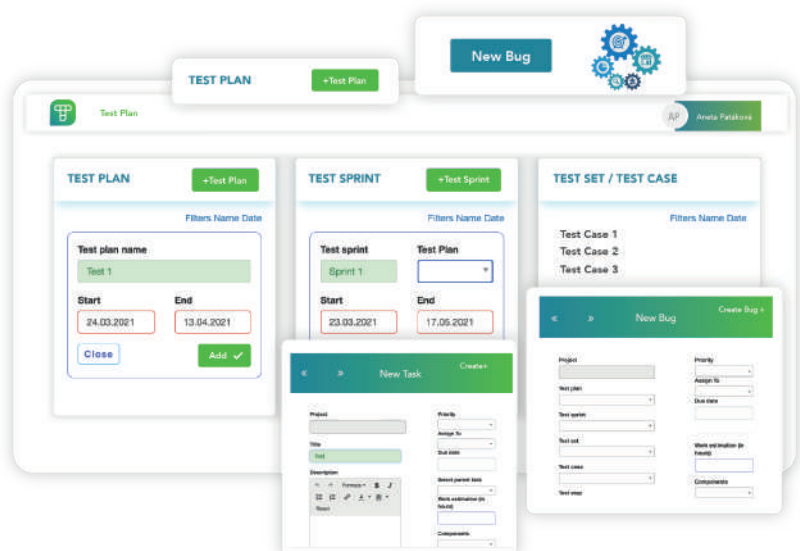
Project component used for design, archiving and definition of the subject of tests.

Test conditions can be easily, clearly defined, structured and maintained. At the same time, it's possible the test analyze export and import into other projects easily and clearly.



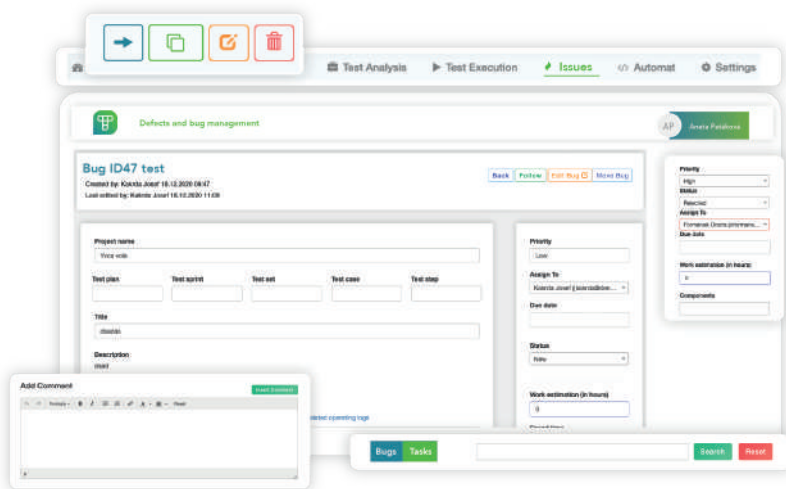
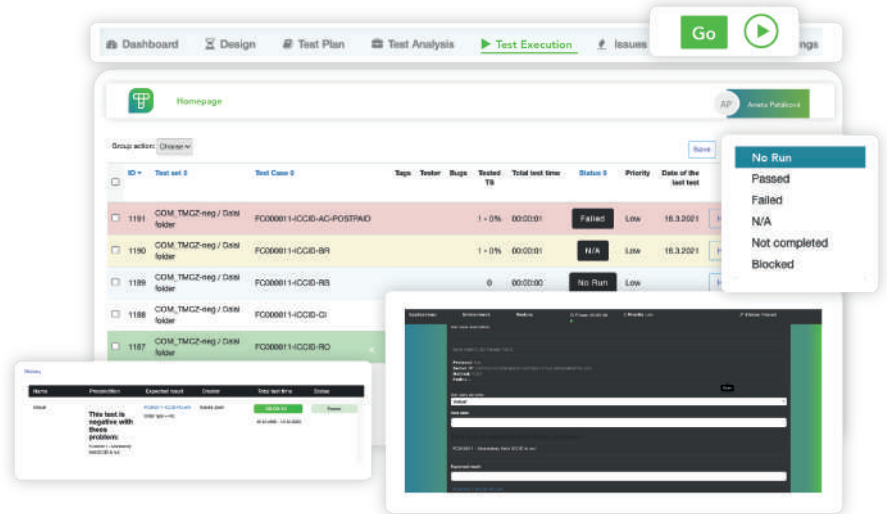
# Test plan

TestDirector is a world-class system for test planning and status monitoring. Test Plan is used to create and manage individual sprints of test cycles. Each Test Plan is associated with a Test Set containing Test Cases, which can be easily and effectively tested in the Test Plans.



## Test execution

One of the key features of the product or service validation process. A module that allows you to run a test with integration to other features such as defect reporting, archiving of already performed tests, their commenting and much more.



## Defect and bug management

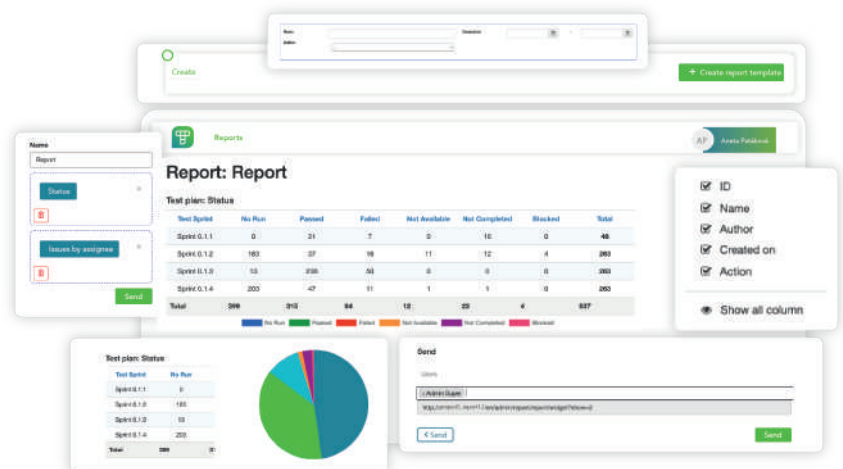
Issue module is an integrated tool for issue management in TestDirector. This means creating individual Issue in Bug, Request, Defect.

Subsequently there are possibilities for their editing closing and deleting. Each Issue created in the Issue module contains a link in which project and in what exact part, up to the individual Test Step, the bug occurred.

## Reports

The Reports module is used to report individual projects (partial parts and units) and evaluate their status.

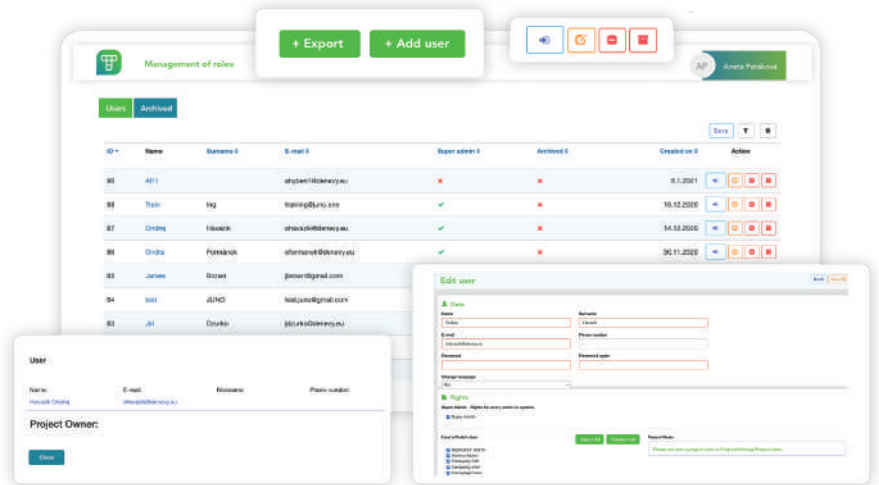
Within this module, you can easily create a report and its template, which can be edited at any time and sent to the responsible person. All reports can be quickly found through a practical filter and evaluated using visually attractive graphs.



## Management of roles

A module allowing maximum freedom when defining restrictions or manipulating individual users with the portal.

The primary advantage is the possibility of almost 100% modification of roles according to defined permissions, creation of completely new roles and their mapping both on projects and within the portal itself.



## Storage

The storage is used for storing the necessary test scenarios in the system and their subsequent use. Easily move to new projects without re-inventing or rewriting test scenarios. There is also the option to move the entire folder to the project.

All test scenarios are divided into individual folders as needed, for a better overview and easy work with them.

