



Software Architecture Definition and Execution invilla

part of AI/R

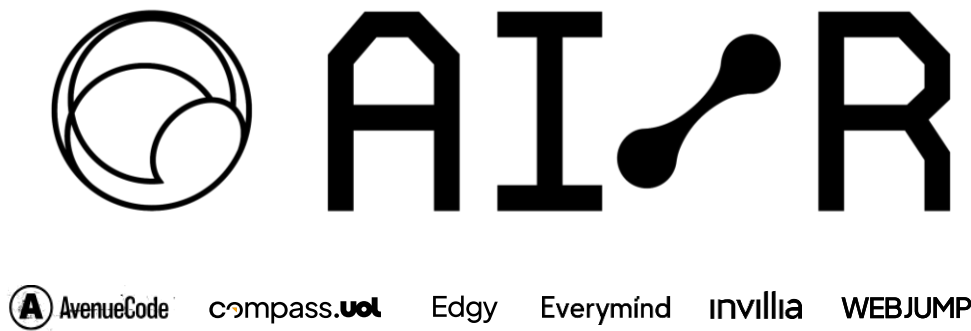
invillia

Invillia is part of AI/R, the AI Revolution Company.

One of six AI powerhouse brands revolutionizing tech consultancy and digital transformation models.

Embedding AI in any industry sector, in every aspect of customer engagement and business platforms.

Making the AI revolution your revolution.



6,000+
tech professionals

15+
Innovation Studios

20+
accelerators

Proprietary AI platforms
AI/Cockpit, AI/AgentsBuilder,
AI/Studio Platform, Llia

Global presence
with offices in Brazil, Europe,
and the US


Solution

Requirement analysis and definition	Solution planning and architecture	Front-end and back-end development	Integration with databases, APIs, and external systems
Infrastructure and DevOps implementation	Security, monitoring, and regulatory compliance	Maintenance, support, and continuous evolution	Framework to define and develop architectural components

Competitive Advantages

Engineers empowered by GitHub Copilot	Best practices for microservices, serverless, and event-driven architecture, among others	Highly scalable and performing solutions, ready for high traffic volumes
Alignment with international standards	Execution and monitoring with support for implementation and for the adoption of best practices	Solutions adapted to the client’s needs

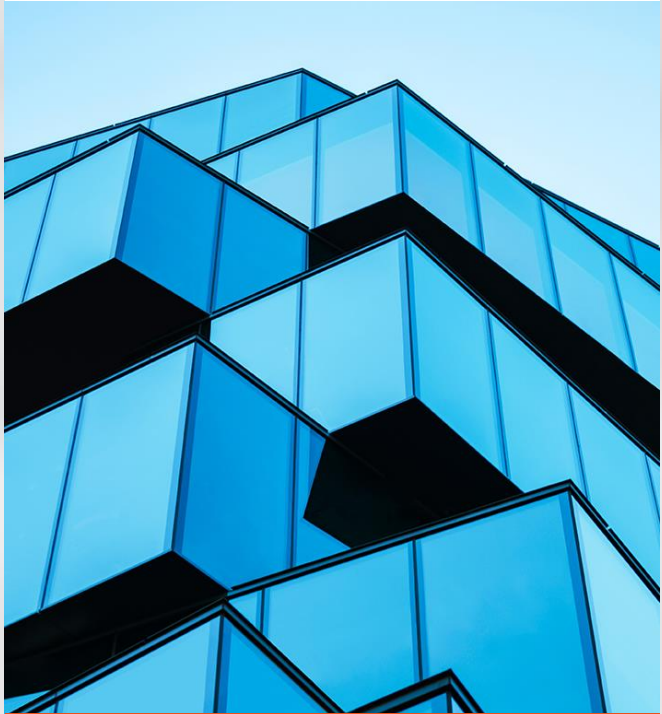
Tech Stack

Back-end and front-end	Cloud infrastructure	Security & Design patterns		GitHub Copilot Certified Professionals
Mobile	Databases	Integrations and APIs		

Ideal for Key Industries

Food & Beverage	Automotive	Education	Energy	Government	Real Estate	Manufacture	Media & Entertainment
NGOs	Marketing & Advertising	Healthcare & Beauty	Financial Services	Telecommunications	Transport & Logistics	Retail & E-commerce	Travel & Hospitality

Software Architecture
Definition and Execution





At least **40% increase in productivity** with GitHub Copilot

Innovation never stops.



invila