

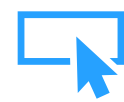
# How to install and run dbForge Edge on Linux & macOS

Set up and run the world's top multidatabase  
solution with CodeWeavers CrossOver

# What is dbForge Edge?

dbForge Edge is your ultimate multidatabase solution for effective development, management, and administration of SQL Server, MySQL, MariaDB, Oracle, and PostgreSQL databases.

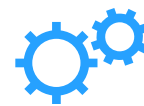
Context-aware SQL code completion,  
smart formatting and refactoring



Automated debugging capabilities  
with step-by-step execution



200+ smart generators  
of realistic test data



Failsafe automated backup  
and fast recovery of databases



Comparison and synchronization  
of database schemas and table data



What you get with  
dbForge Edge



Data analysis and reporting tools  
with charts and pivot tables



Query optimizer that eliminates  
performance bottlenecks



Data import and export  
with 10+ supported formats



Visual query building  
on diagrams without coding



Full database documentation  
generated with just a few clicks

[WATCH THE INTRODUCTORY VIDEO](#)

[EXPLORE THE FEATURES](#)

# How to install and run dbForge Edge on Linux & macOS

You can run dbForge Edge on a Mac or Linux machine without compromising your experience. For that purpose, you can use [CrossOver](#), a commercial compatibility solution that allows running Windows apps on macOS and Linux and comes with a free trial.

Unlike virtualization machines (such as VirtualBox and Parallels Desktop), CrossOver does not require you to purchase a new Windows license, then install and configure the OS. Everything is much simpler. CrossOver is just an app that runs on macOS or Linux and allows you to create customizable Windows environments and store them in separate containers called bottles. That said, once you create a bottle, you can install a Windows application into it and run it from there.

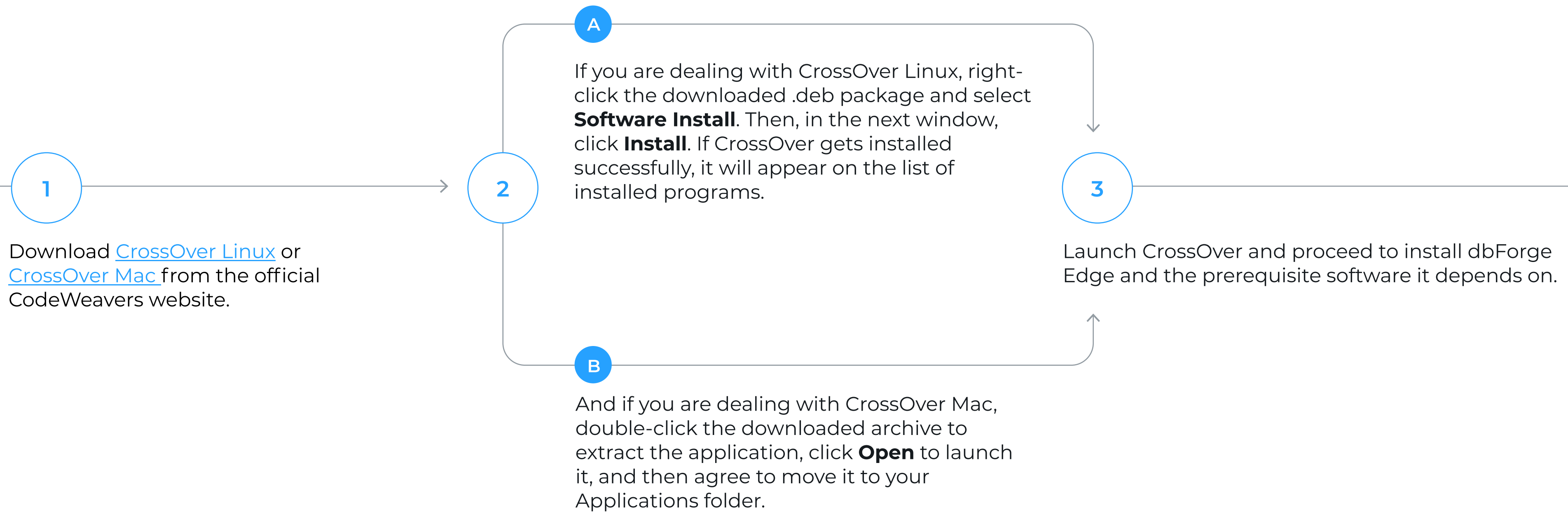
Note that you can create as many bottles as you need. Moreover, you can store multiple Windows applications in a single bottle, if these applications require the same configuration.

And when it comes to convenience in daily work, it's near perfect: you just launch the CrossOver app on your Mac or Linux machine and run dbForge Edge in it, plain and simple.

**To make dbForge Edge run on Linux or macOS, take the following steps:**

- 1 Download and install**  
CrossOver Linux or CrossOver Mac, depending on the operating system you are using
- 2 Install dbForge Edge**  
following the manual installation scenario
- 3 Run dbForge Edge**  
on your Mac or Linux machine and enjoy the ride!

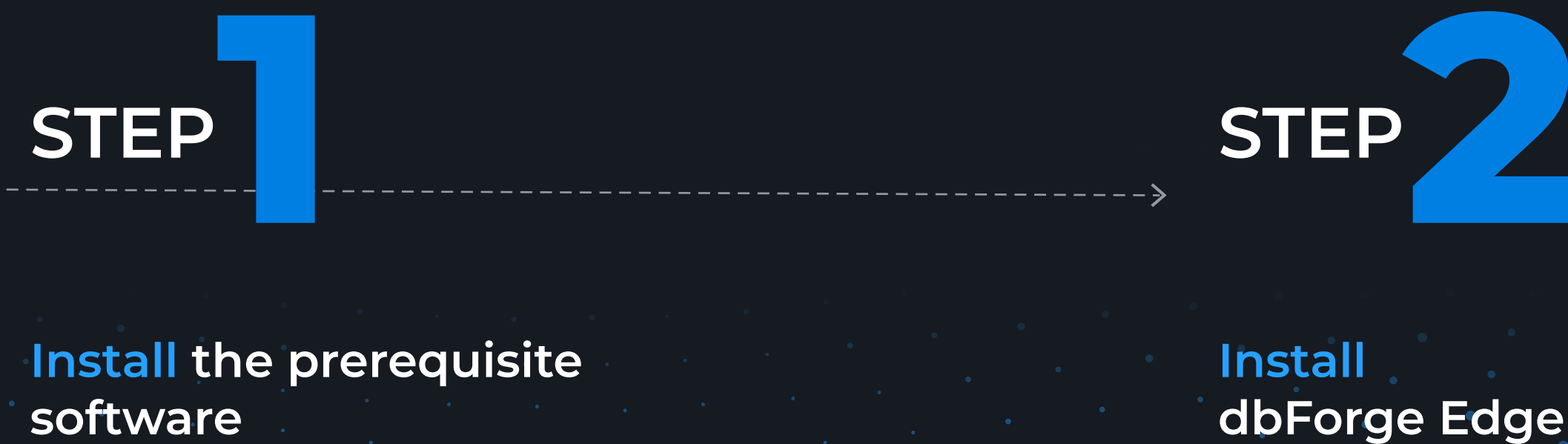
# Download and install CrossOver Linux/Mac





# Manual installation of dbForge Edge

You can install dbForge Edge as an unlisted application. All the prerequisite software must also be installed manually. The manual installation of dbForge Edge comprises the following steps:

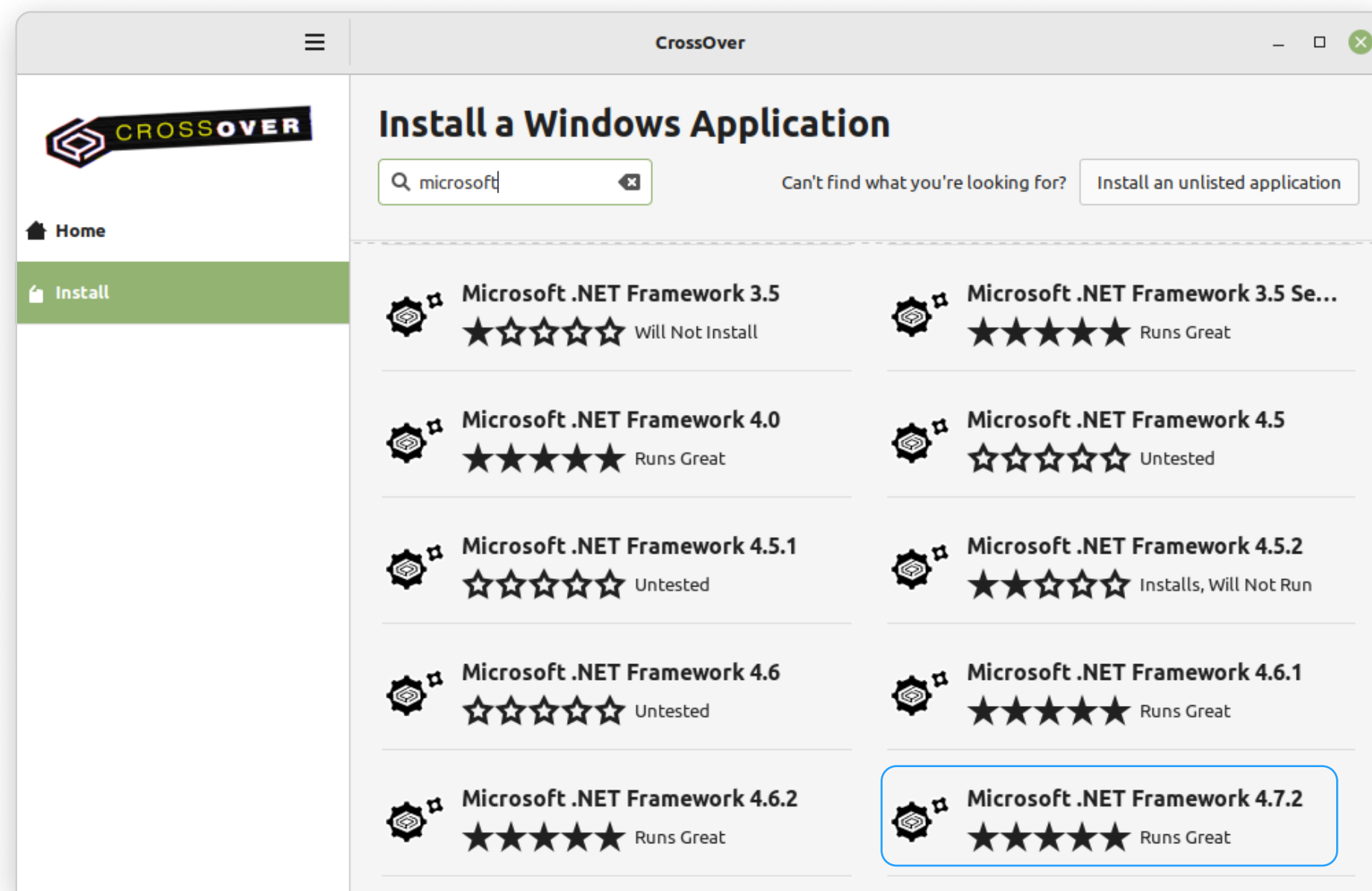


# Step 1.

## Install the prerequisites

1 —————>

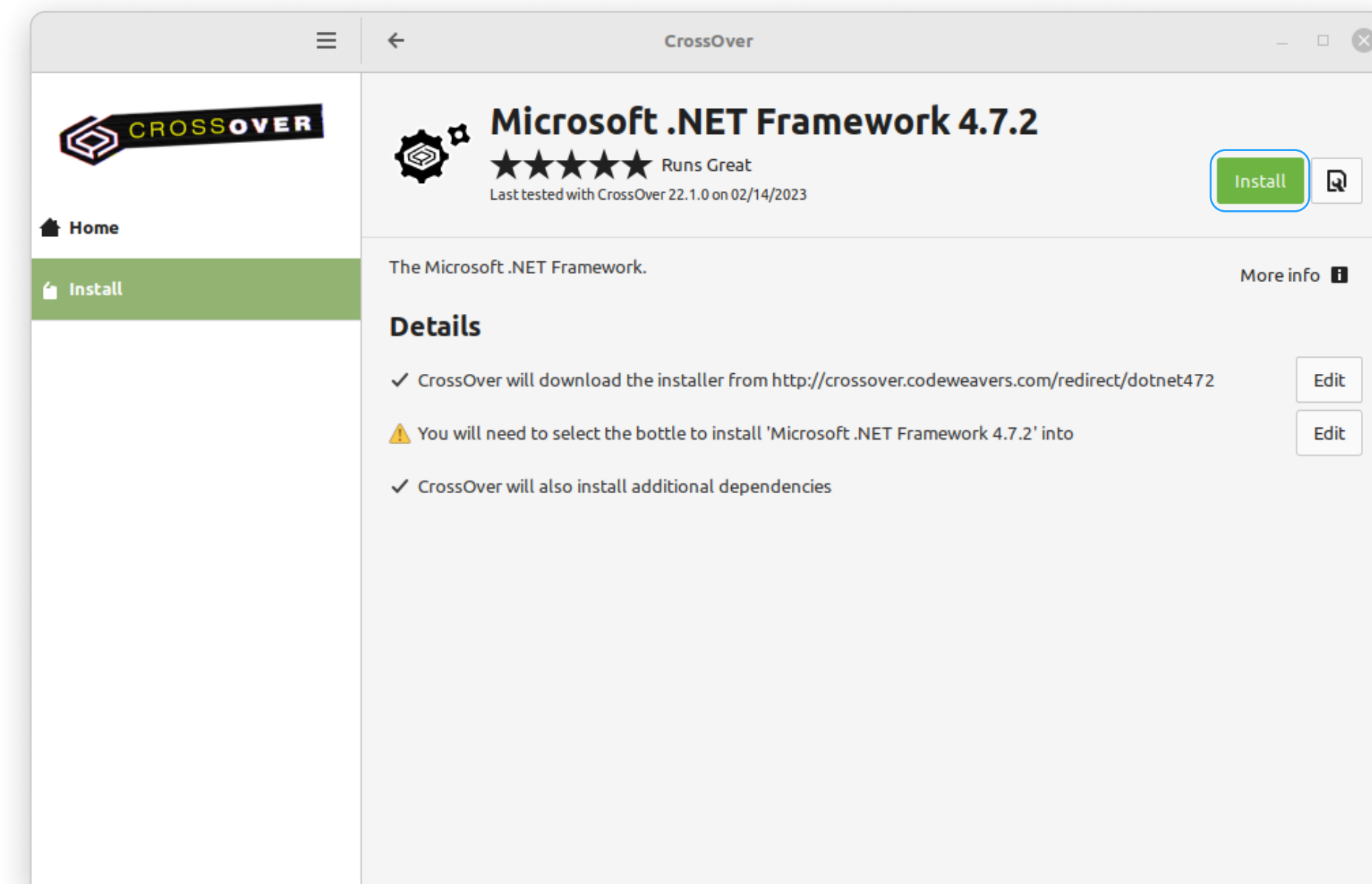
Open CrossOver. On the **Install a Windows Application** page, start typing “Microsoft .NET Framework 4.7.2” in the search box. Then click Microsoft .NET Framework 4.7.2 in the results.



To run properly, dbForge Edge requires .NET Framework 4.7.2. Therefore, your first step is to prepare the environment by installing the .NET Framework 4.7.2 package into the bottle where dbForge Edge will be installed later.

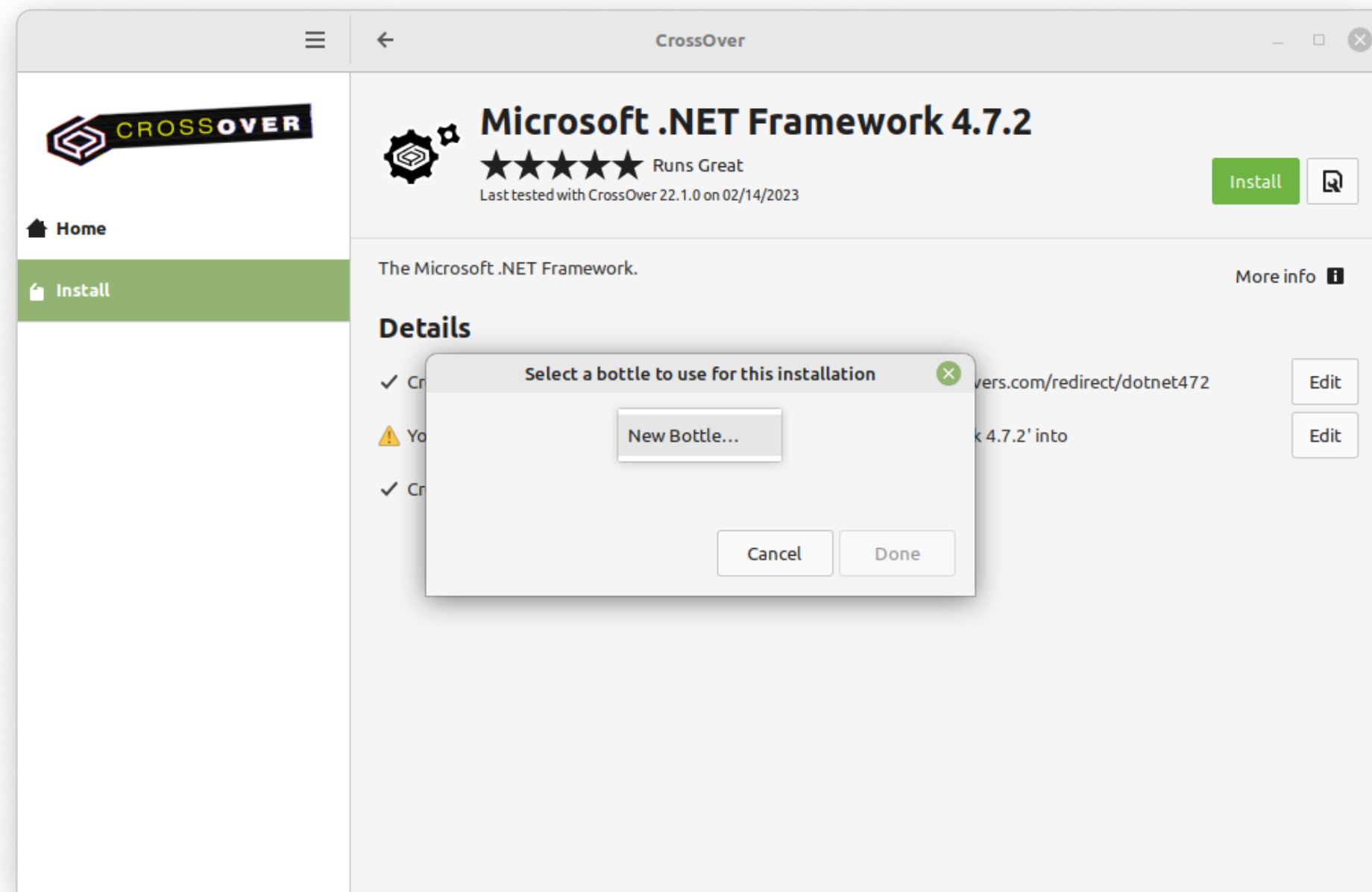
2 —————>

On the dedicated .NET Framework 4.7.2, page, click Install



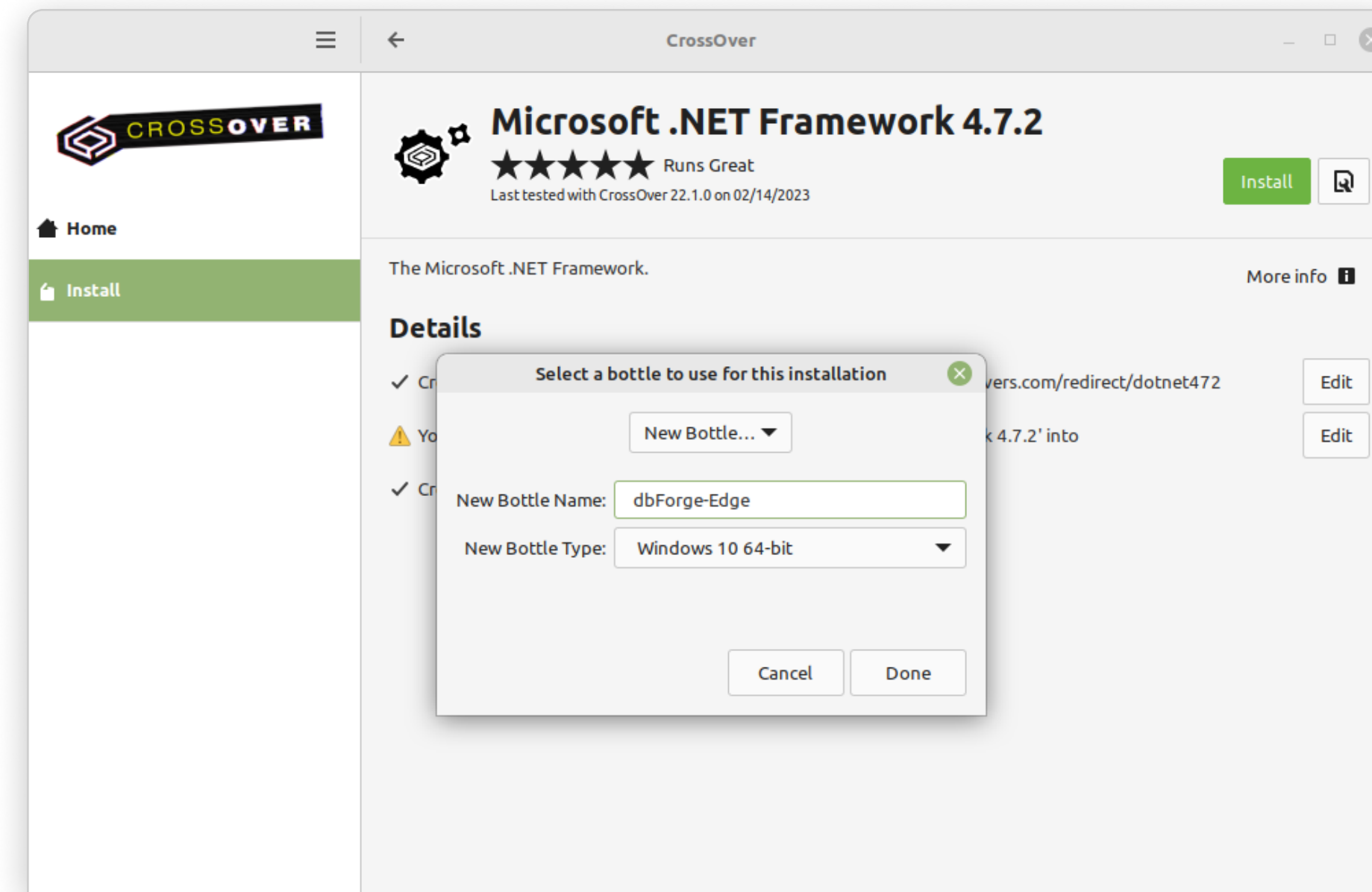
3

You will be prompted to select a bottle for the .NET Framework package to be installed into. Click **Select a Bottle** to either create a new bottle or select an existing one.



4

If you create a new bottle, specify the bottle name and make sure you select the Windows 10 64-bit bottle type. Then click **Done**.

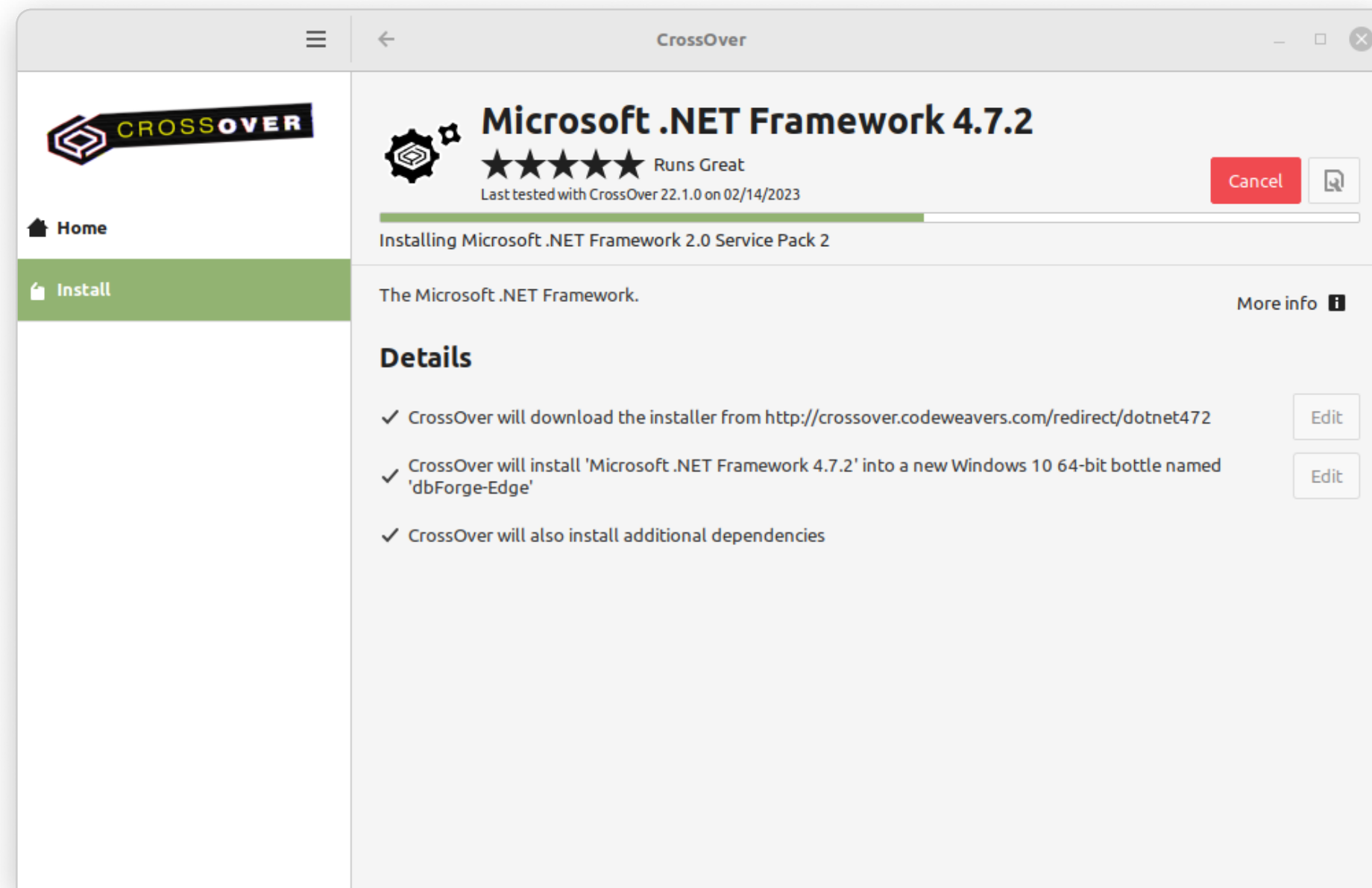


If CrossOver freezes at some point while installing the .NET Framework 4.7.2 package, abort the installation and start the process anew, having selected the same bottle.

5

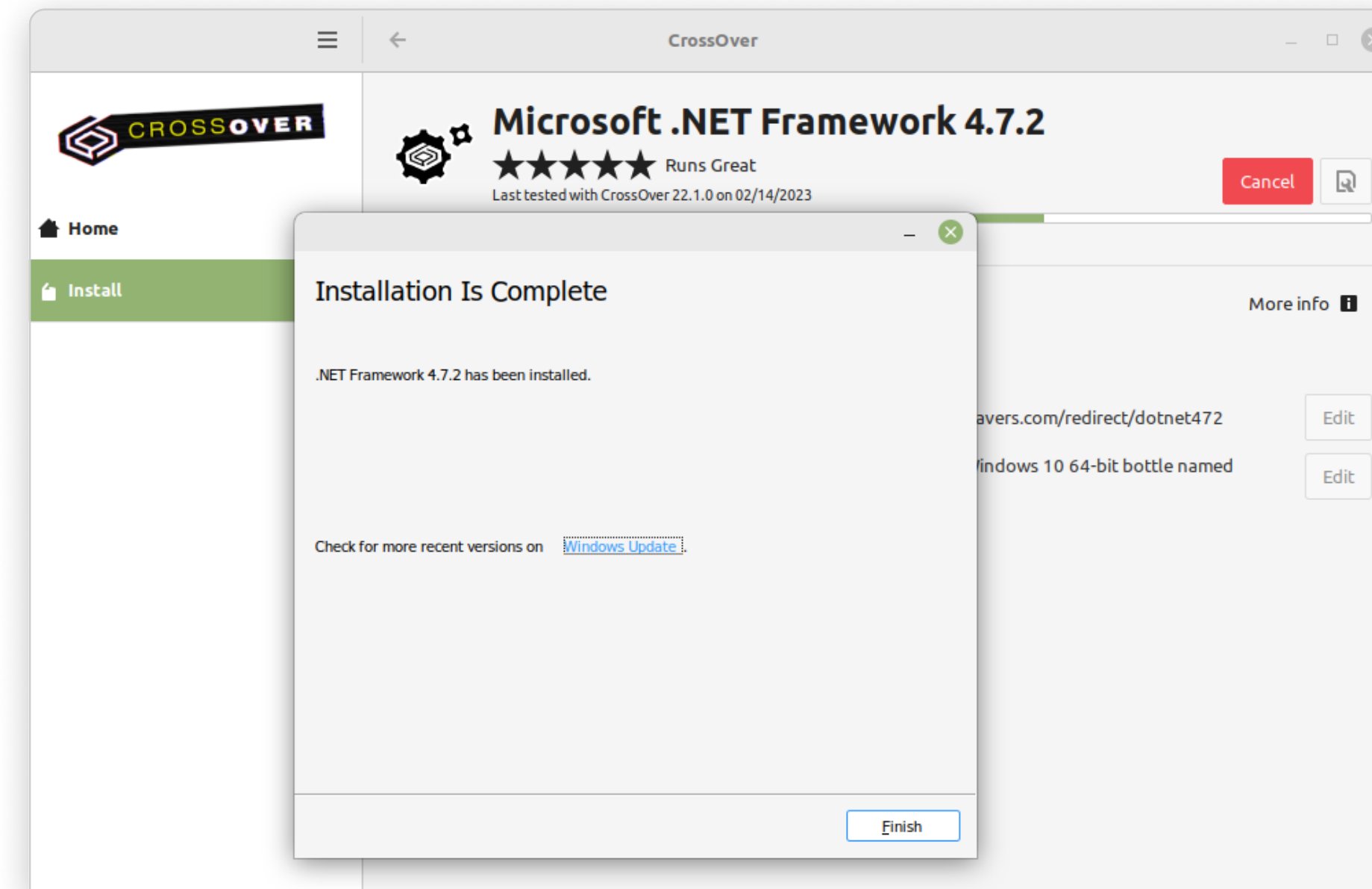
The installation of the .NET Framework package begins. Please note that it may take some time. And if you have previously selected a bottle where .NET Framework 4.7.2 is already installed, this step will be skipped automatically.

The installer will guide you through all the steps. You will need to agree to the license terms and confirm the reboot of the bottle environment by clicking Restart Now after each prerequisite is installed. Note that your machine will not be rebooted, only the bottle will.



6

After the successful installation of the last required component - .NET Framework 4.7.2 - click Finish. Now CrossOver is ready to install dbForge Edge.

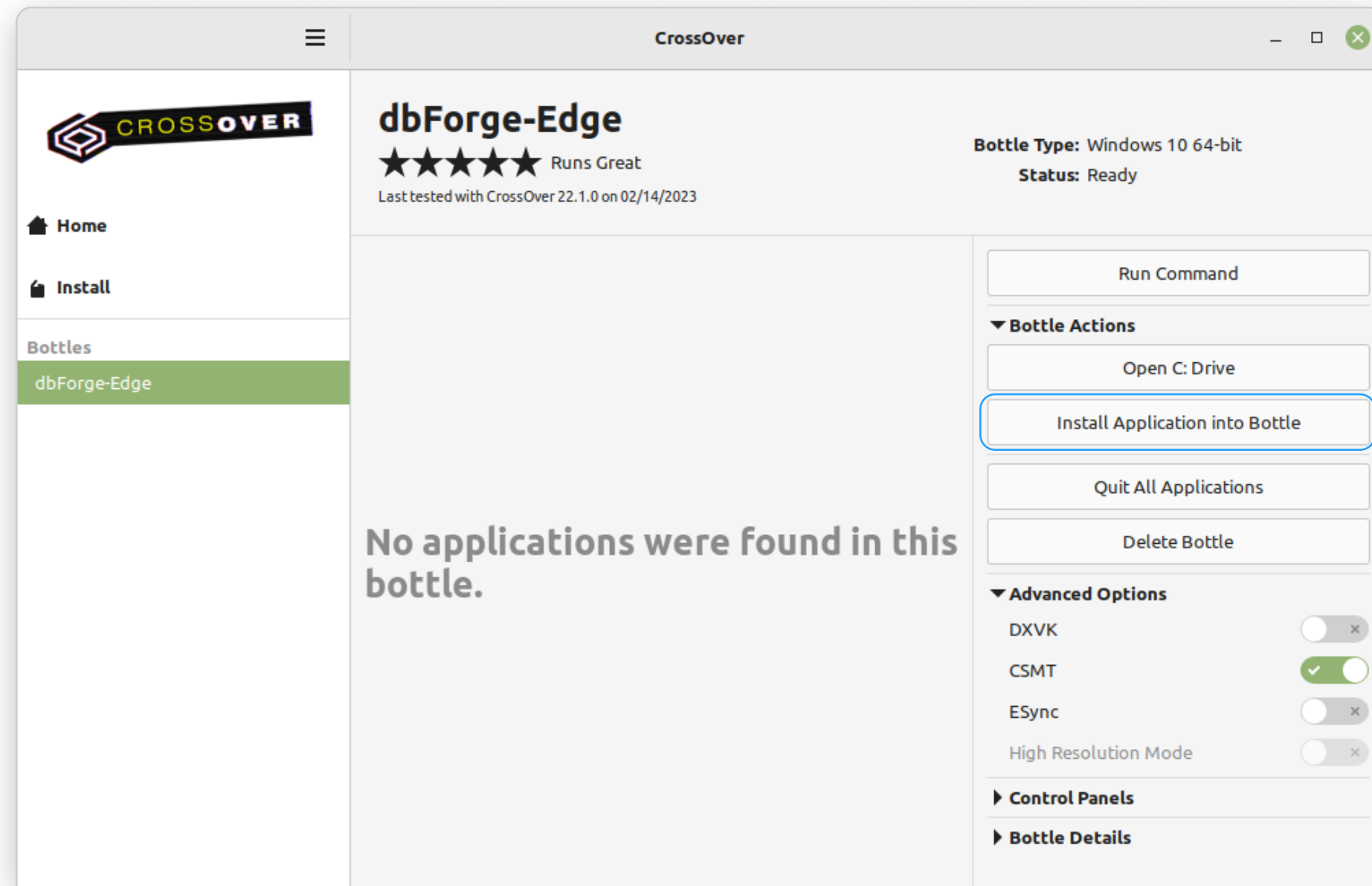


## Step 2.

### Install dbForge Edge

1

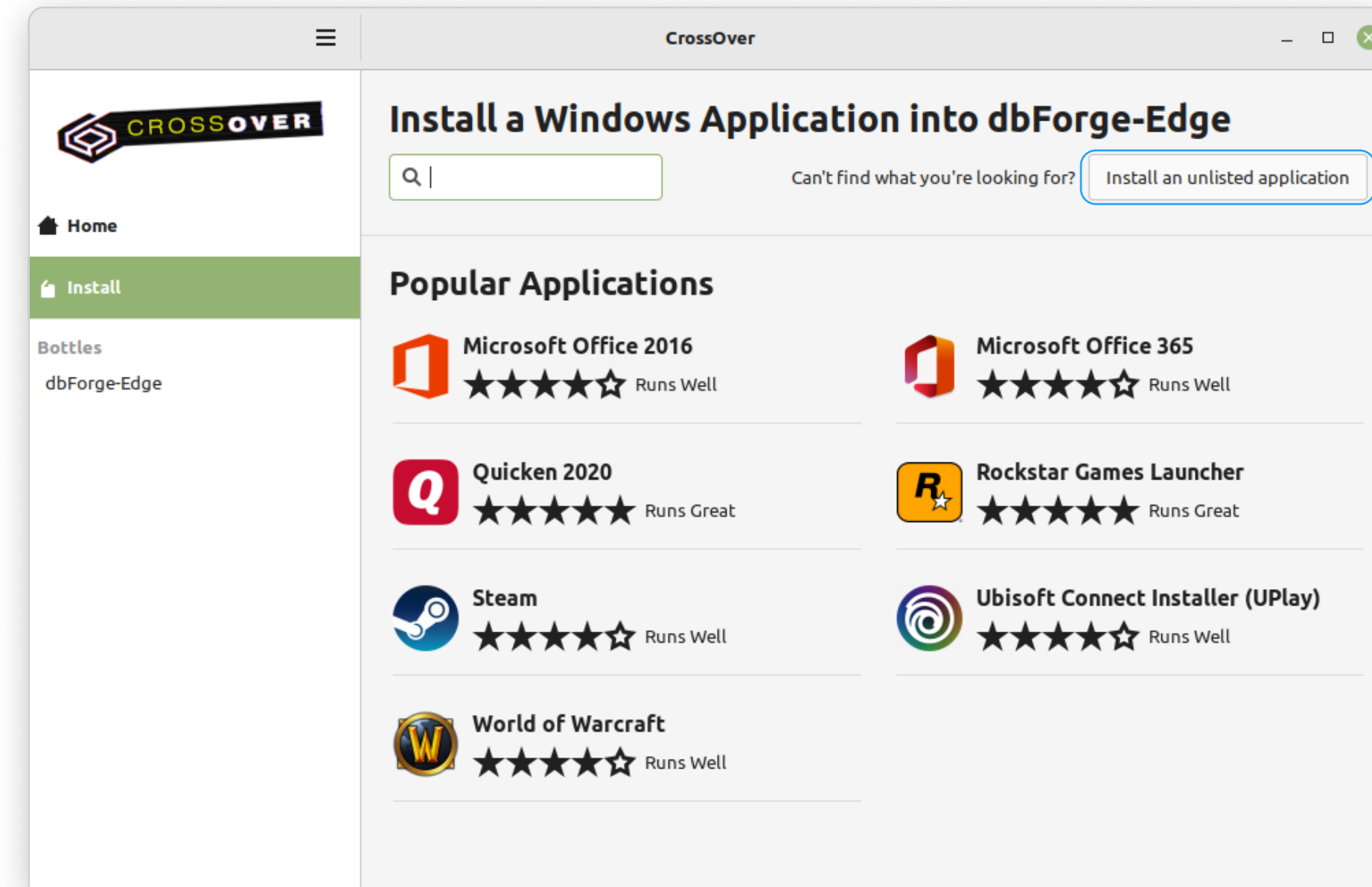
Go to the newly created bottle and click either **Install** in the lower left corner of the screen or **Install Application into Bottle** under **Bottle Actions**.



2

Before you begin, [download](#) the dbForge Edge installer file and place it in a folder of your choice.

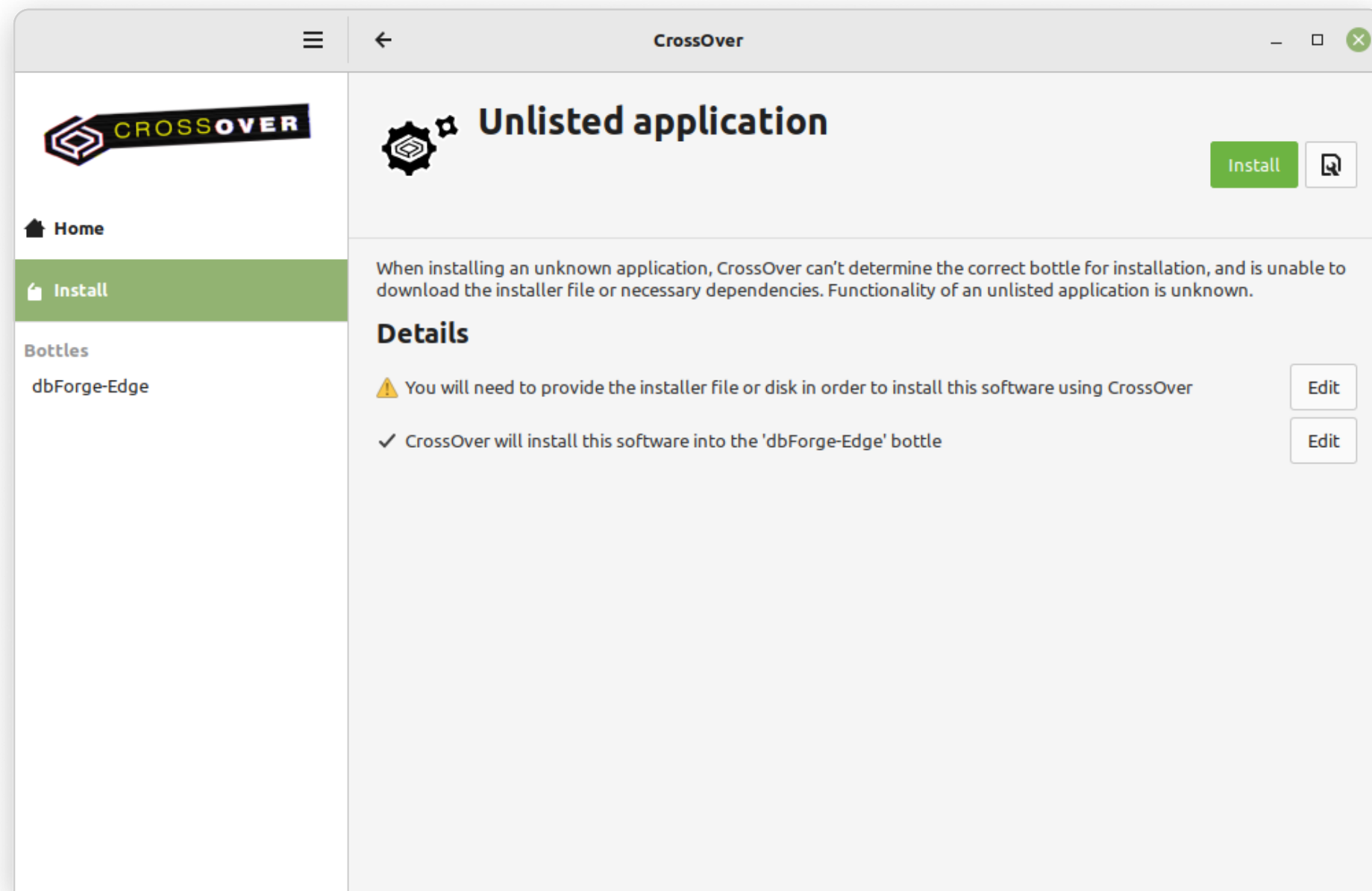
On the **Install a Windows Application** page, click **Install an unlisted application**.





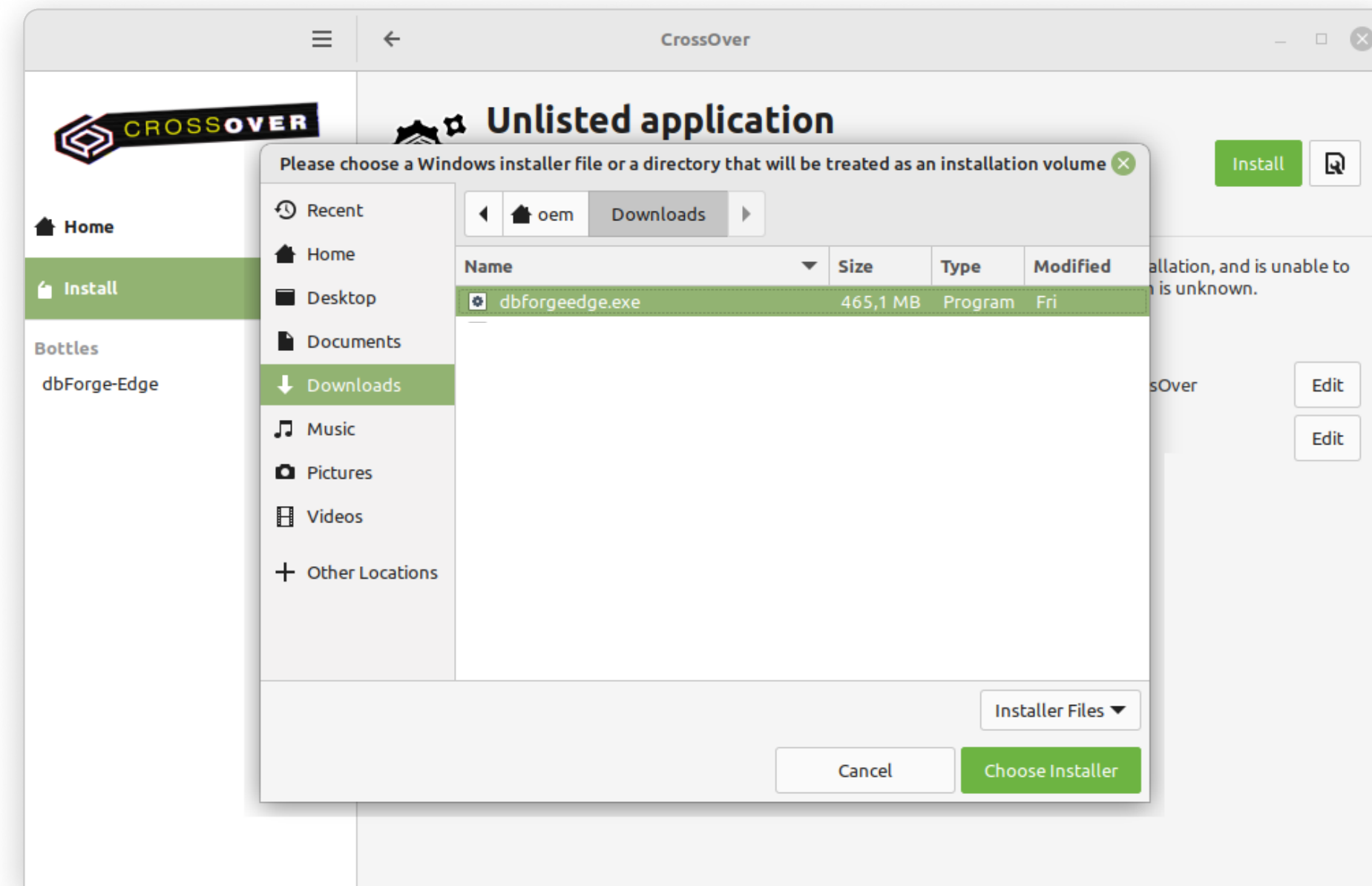
3

On the **Unlisted Application** page, click **Install**.



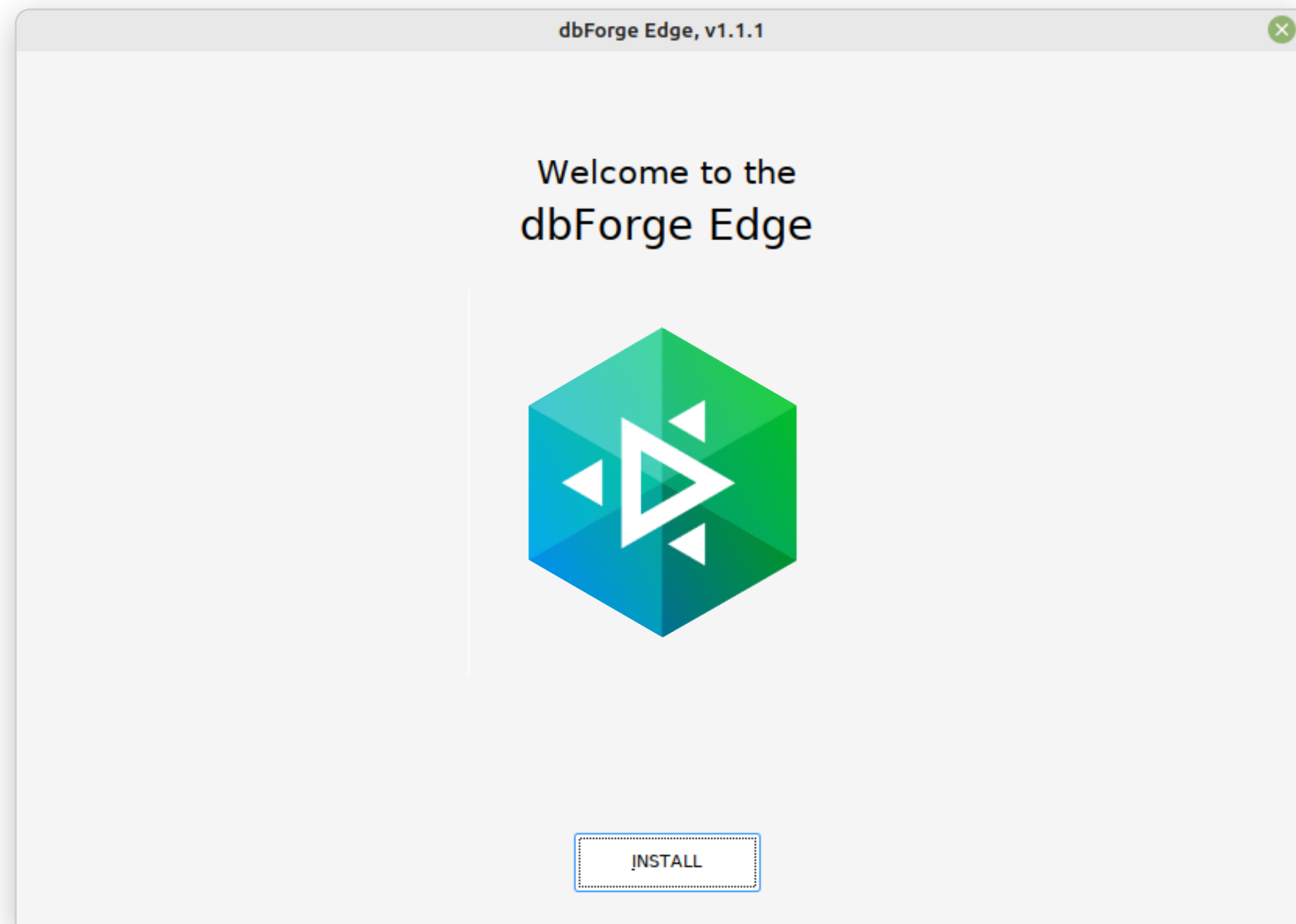
4

Now you need to specify the location of the previously downloaded installer file (in our case, it is the default Downloads folder). Find and select the required file and click **Open**. In CrossOver Mac, the corresponding button is called **Choose installer**.



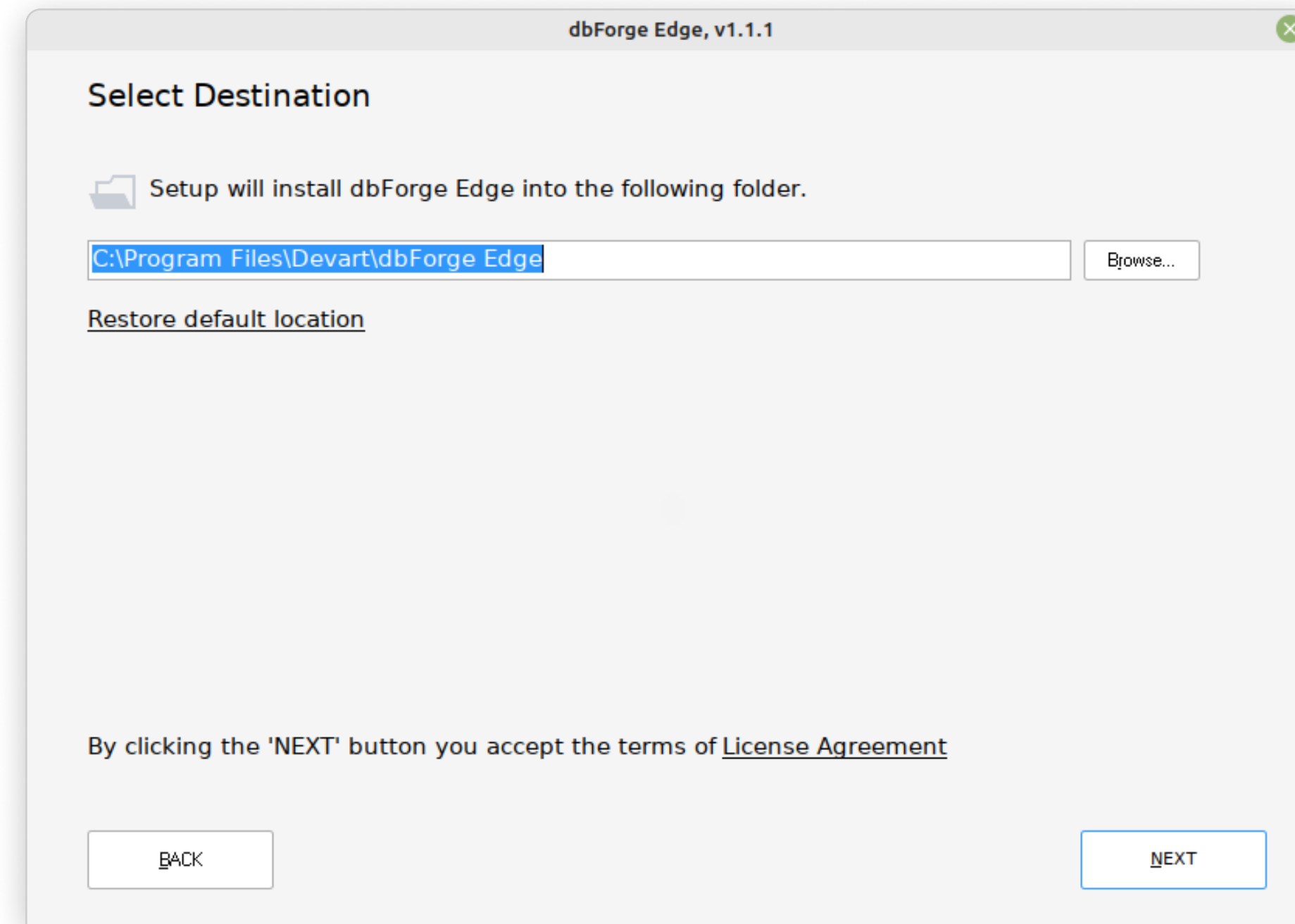
5

The installation begins, and CrossOver proceeds to install dbForge Edge. When the wizard opens, click **Install**.



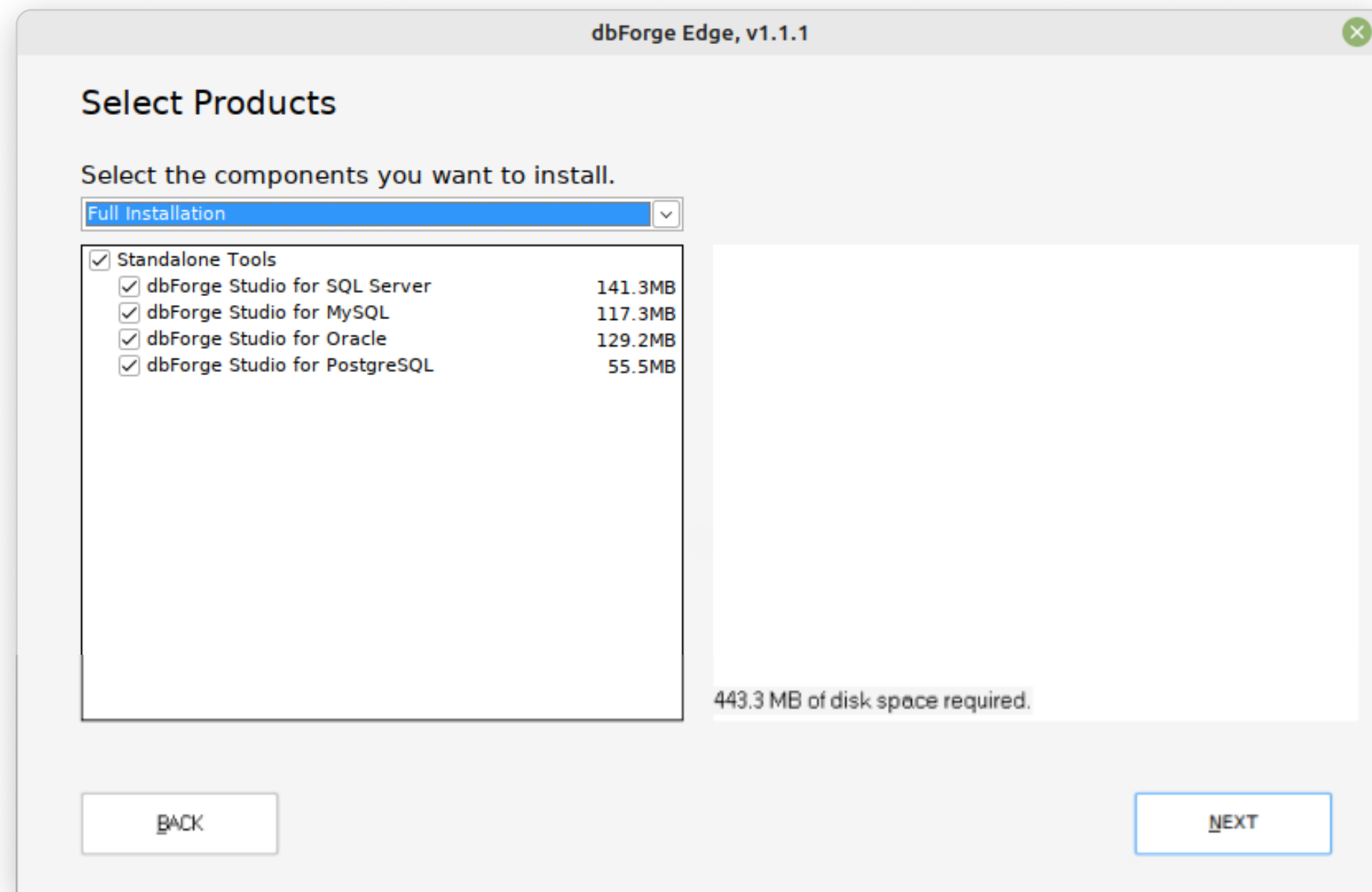
6

On the **Select Destination** page, select the destination folder for dbForge Edge and click **Next**.



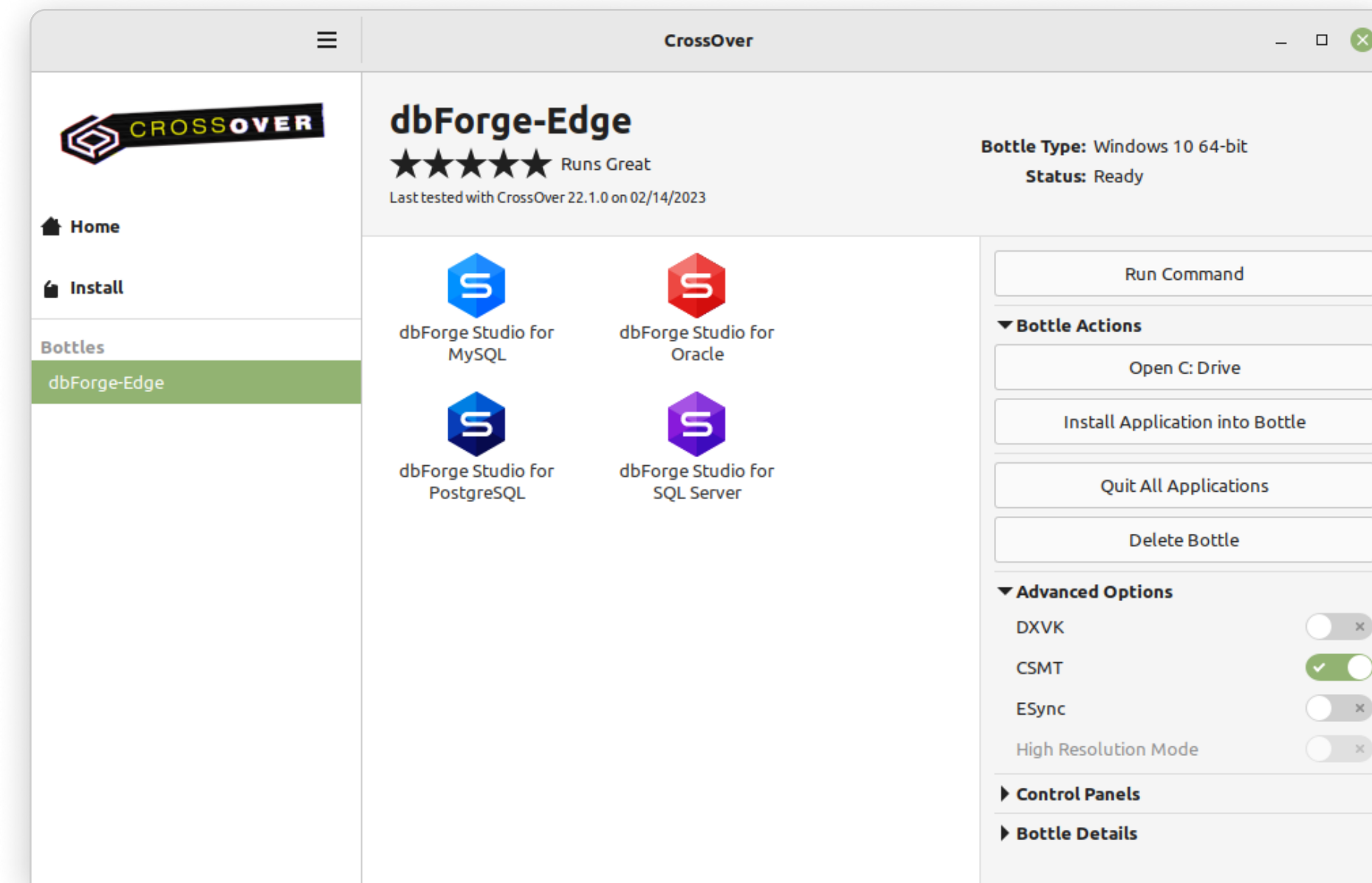
7

On the **Select Products** page, select the Studios that you want to be installed and click **Next**.



8

Wait until the selected components are installed and click **Finish**. After that, they will be displayed in the newly created bottle, ready to be launched.



Note: Before you launch any of the installed Studios, we suggest you turn on the **High Resolution Mode** toggle in the bottle configuration under **Advanced Settings**. Then reboot the bottle by clicking **Reboot Bottle and Enable High Resolution Mode**. This will make your work with the installed Studios more convenient.

## What do you get with dbForge Edge?



### All-in-one multidatabase solution

dbForge Edge was designed to cover the majority of routine database-related tasks, simultaneously providing support for a wide variety of database management systems and cloud services.



### Free 30-day trial

Explore the vast capabilities of the fully-featured dbForge Edge during 1 month of free trial. Then you'll be able to either purchase a license for it or switch to the free Express Edition with a basic set of features.



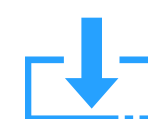
### Fast learning

Effective work with dbForge Edge can be started from day one. The UI is so intuitive that you already know how to use it; and it actually won't take long to master the in-depth features.



### Extensive help

You can always consult our product documentation, video tutorials, and educational articles on our blog. And if you still have questions afterwards, just contact our support service.



### Regular updates

dbForge is all about continuous evolution; our regular updates add new features, enhance the existing ones, and keep our products always polished and relevant for you.



### Bonuses for enterprise clients

A special mention should be made of our enterprise clients, who receive product demos, special offers, bulk discounts, and overall assistance with installing and setting up dbForge tools effortlessly.



Download dbForge Edge for a free 30-day trial today!

[DOWNLOAD FREE TRIAL](#)



Refer to the product documentation for additional information

[GO TO DOCUMENTATION](#)



Download CrossOver to run dbForge Edge on Linux or macOS

[DOWNLOAD CROSSOVER](#)



Compare our pricing options and choose the one that suits you best

[COMPARE PRICING OPTIONS](#)