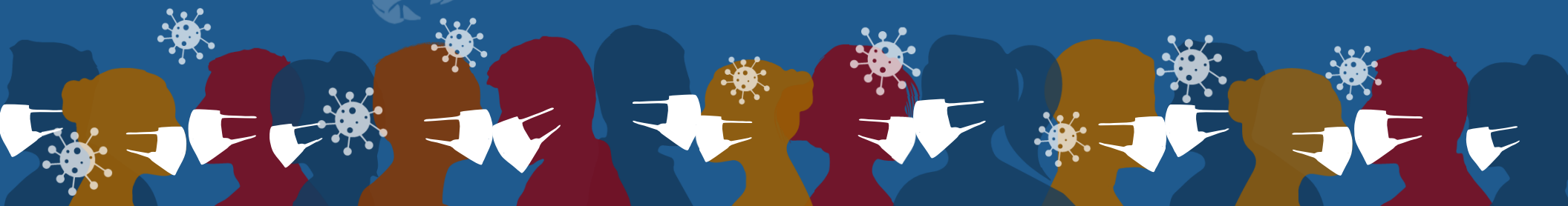




FACE MASK DETECTION API

MASKERIZER

<https://www.de-vis-software.ro/face-mask-detection-api.aspx>





maskerizer

Face Mask Detection API

Maskerizer

Welcome to Our Online Video Presentation!



Agenda

01

What is Maskerizer?

We will see what Maskerizer is and which is its target audience.

02

Benefits

Enumerate the benefits of using Maskerizer.

03

How to Use Maskerizer?

Get insight step by step for using Maskerizer.

04

Example of JSON strings


An example of input JSON string and also an example of output JSON string received from our API.

05

Pricing Packages

We have Free 7 Days Trial, Monthly TIER and Yearly TIER Packages.

01. What is Maskerizer and which is the target audience?



Maskerizer is a Face Mask Detection API on a still photo. It can detect various types of masks put on human faces.

Target audience: IT developers that may want to use it in their apps for domains like entry check into restaurants, museums, close spaces, airports, railway stations, bus stations, hotels, touristic objectives.

02. Benefits

COVID-19



Easy to Use



Maskerizer API is very simple to use and implement in your apps. Being a cross-platform REST API you should use it according to our sample source codes.

All Devices



You are not limited to use on a number of devices nor the type of device.

Support 24x7



You always benefit from our very professional and supportive chat operator 24x7.

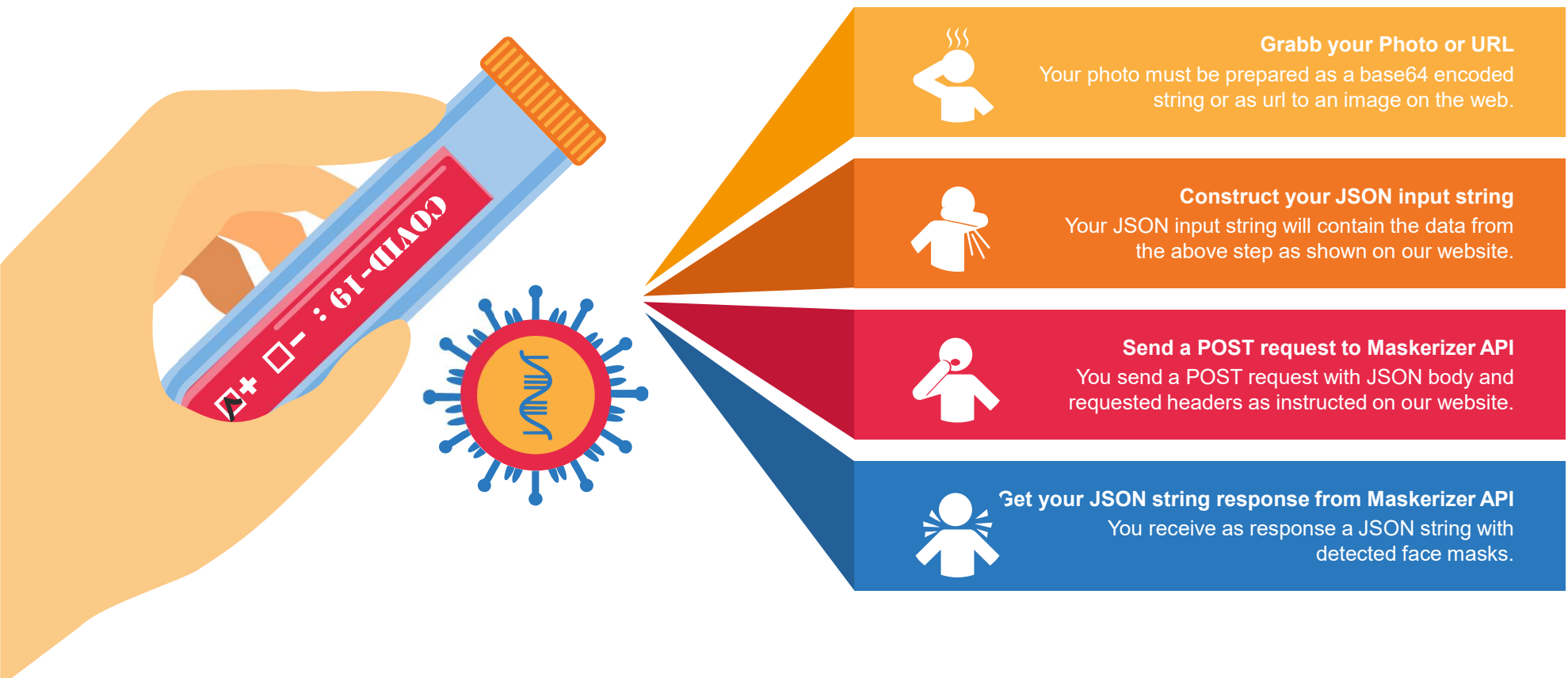
Affordable Price



You may choose from our pricing packages. The Yearly TIER package brings you 15% discount.

03. How to use Maskerizer?

COVID-19



04. Example of JSON strings



COVID-19

PANDEMIC

```
{  
  "base64_Photo_String": "iVBOR..base64...EIFTkSuQmCC",  
  "photo_url": "NO"  
}  
  
{  
  "base64_Photo_String": "NO",  
  "photo_url": "http://domainname.com/image.jpg"  
}
```

04. Example of JSON strings



COVID-19
PANDEMIC

```
{
  "created": "2020-05-02T12:28:09.989Z",
  "predictions": [
    {
      "probability": 0.9913594,
      "tagId": "6b333d95-e461-4155-890c-9921158f7d17",
      "tagName": "face mask",
      "boundingBox":
        {
          "left": 0.590857267,
          "top": 0.049960345,
          "width": 0.153553188,
          "height": 0.287757039
        }
    },
    {
      "probability": 0.9909611,
      "tagId": "6b333d95-e461-4155-890c-9921158f7d17",
      "tagName": "face mask",
      "boundingBox":
        {
          "left": 0.241624564,
          "top": 0.2652982,
          "width": 0.137271315,
          "height": 0.2830975
        }
    }
  ]
}
```


05. Pricing Packages

COVID-19

Common Features

- Get bounding boxes for each face mask put on detected.
- Get the probability score of each detected face mask put on in the input photo.
- Get timestamp at the moment of the request
- Administration console
- Support through online chat and/or tickets

\$0



Free 7 Days TRIAL

50 Requests Daily.
No Copyright.
No Spam Accounts.

\$80



Monthly TIER

10000 Predictions /
Month
50 Requests / Minute.
Commercial
Copyright.

\$816



Yearly TIER

15% Discount
Included
10000 Predictions /
Month
50 Requests / Minute.
Commercial
Copyright.

A light blue world map is centered in the background of the slide.

THANK YOU

<https://www.de-vis-software.ro/face-mask-detection-api.aspx>

