

PLATE*bber*
License Plate Recognition API

Platebber

License Plate Recognition API

<http://www.de-vis-software.ro/license-plate-recognition-api.aspx>

Agenda

1. What is Platebber and which is the target audience?

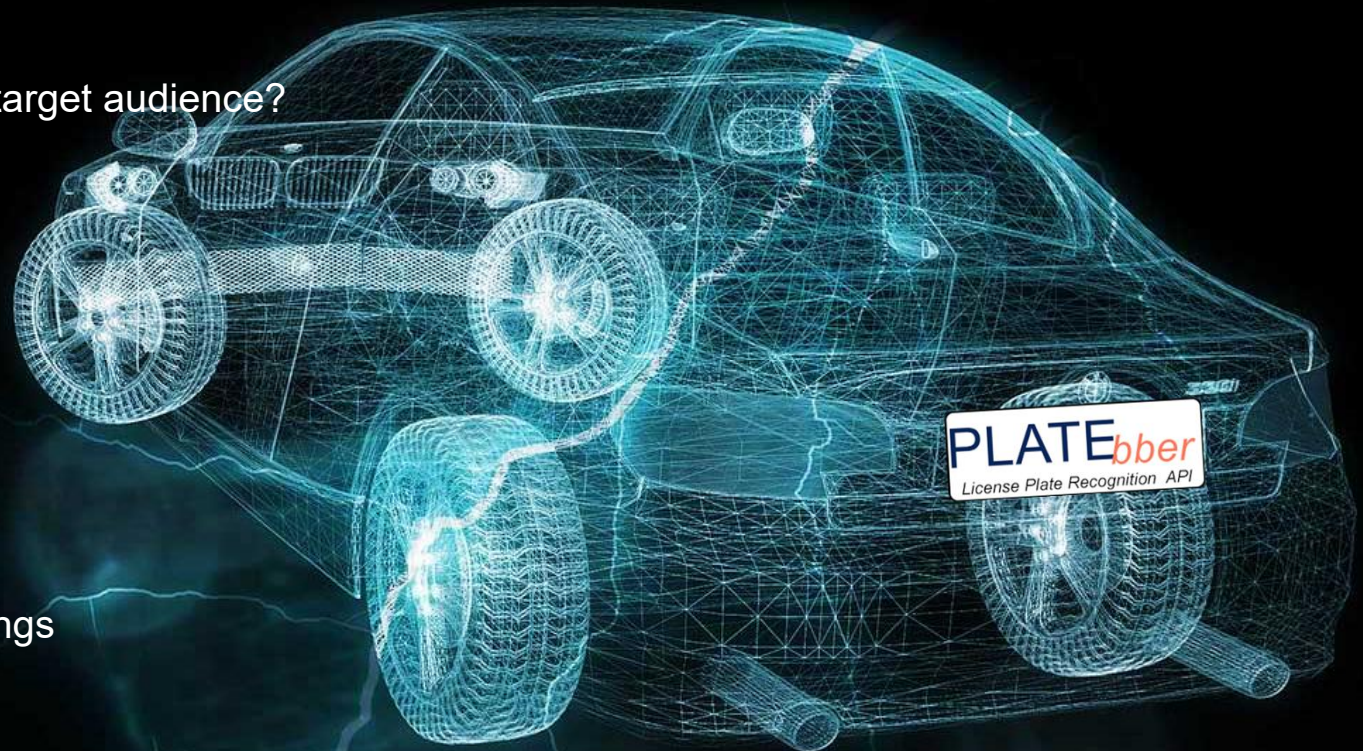
2. Which are the Benefits?

3. LPR Camera Angles

4. How to use Platebber?

5. Example of input / output JSON strings

6. Pricing Packages





1. What is Platebber?

Platebber is a License Plate Recognition API powered by Artificial Intelligence and powerful cloud infrastructure.

Target Audience

This API is meant for IT developers which are making LPR or ALPR applications and need an API to localize and read the text from one or more license plate(s) in a photo taken by a LPR Camera. Domains of using it: parking, private residences, traffic, vignetting, borders, check points etc.

PLATEBBER

License Plate Recognition API

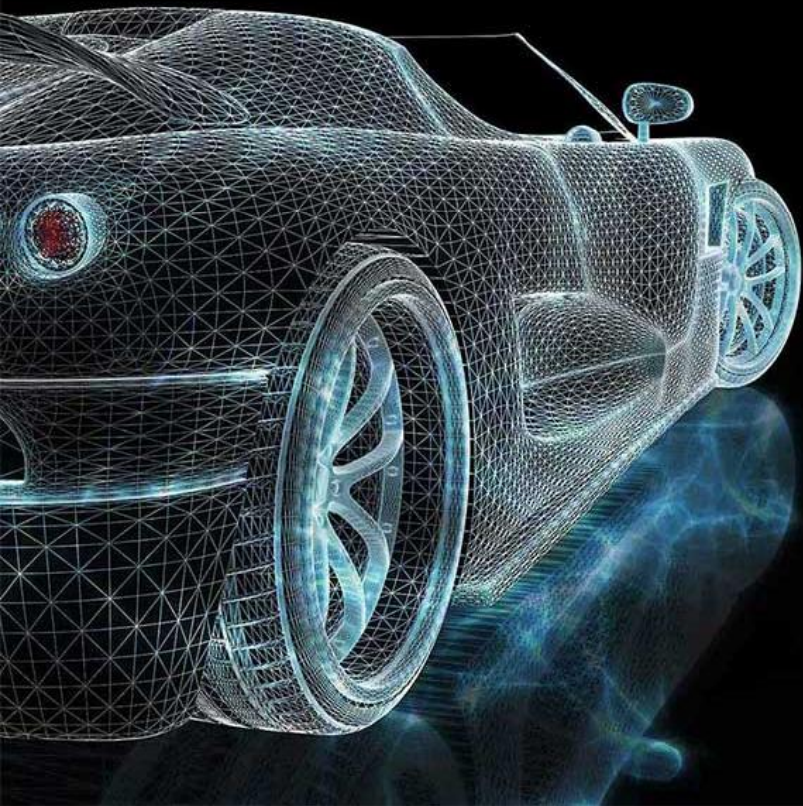
EASY TO USE AND INTEGRATE IN YOUR APPS.

MODERN

Powerful

CLOUD Born

2. Which are the Benefits?



01 Automated Process

All processes are automated. You just have to follow the required rules for getting a high accuracy reading.

02 Easy to Integrate in your APPS

We have multiple sample source codes presented on our website written in different programming languages which will help any developer to easy integrate the API in the APP(s).

03 Chat Support 24 x 7

If you have questions or need some help, we are glad to quick answer you and offer the best we got.

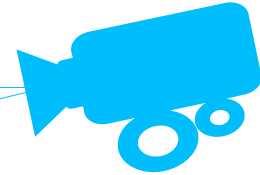
04 You Own Commercial Copyright

Yes, you may call our API in your APPs and feel free to sell your applications without any extra fee than our pricing packages.



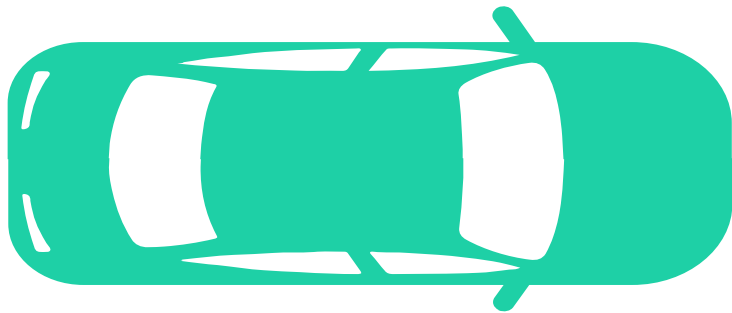
Camera Tilt Angle

Max. 20°



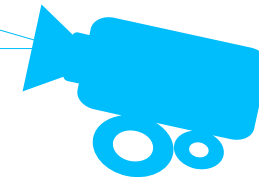
3. LPR Camera Angles

Recommended: 1920x1080 (Full HD) photo, varifocal lenses, high shutter speed, powerful infrared, ratio between the height of the plate and the height of the entire photo 1:15 or higher.



Max. 30°

Camera Side Angle



4. How to use Platebber?



1

Register

Register a new account on our website with real data.

2

Activate Trial

Login to our website, go to Pricing and click on Try it Now blue button.

3

Input JSON

Construct your input JSON string as instructed.



6

Use in Your APPs

Process our API response and use it as you wish in your APPs, you own commercial copyright for use our API.

5

Get Response

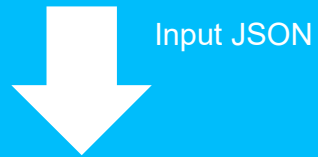
Get JSON response from our API which contains plate(s) number text and other useful info.

4

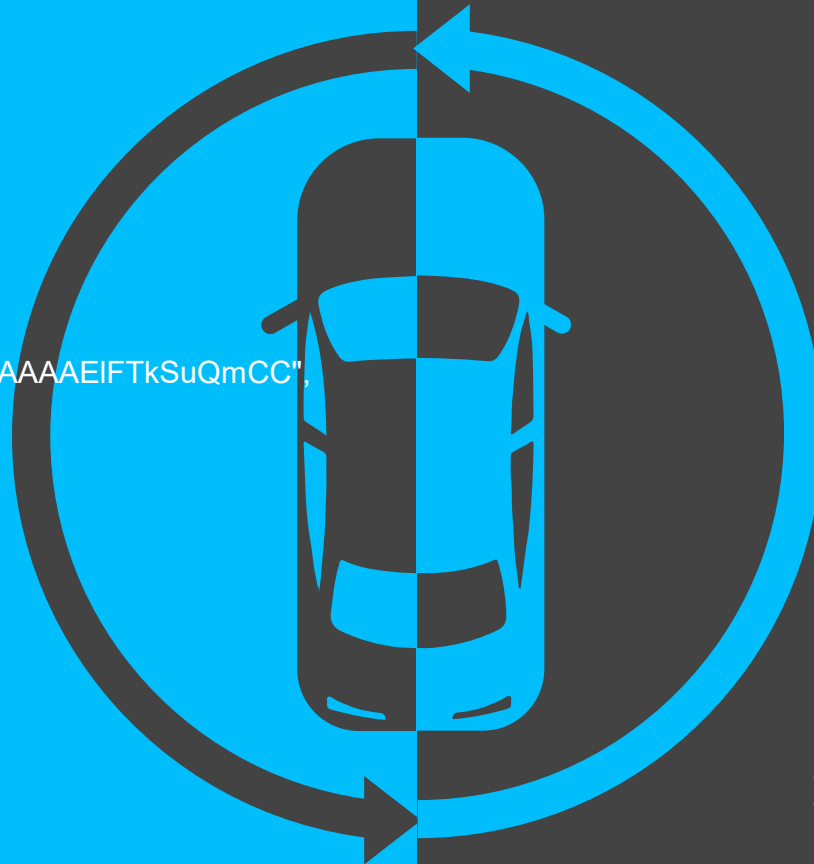
Send Request

Send POST request with your input JSON body and required headers to our API.

5. Input / Output JSON Example



```
{  
  "base64ImageString":  
  "iVBORw0KGgoAAAA...base64 photo...GAAAAAEIFTkSuQmCC",  
  "languageCode": "auto",  
  "plate_output": "no"  
}
```



JSON Response



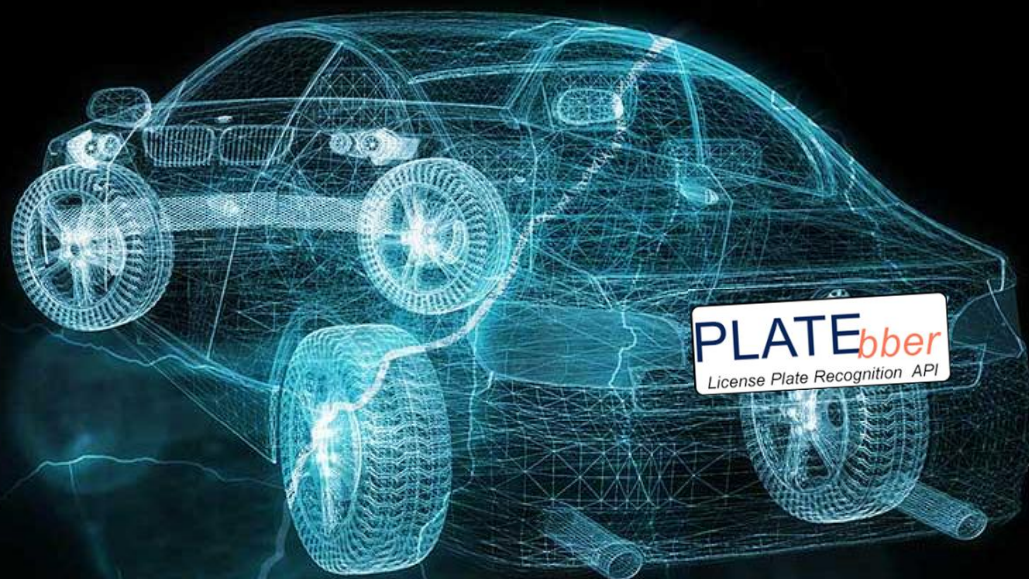
```
[  
  {  
    "id": "license_plate",  
    "description": "License plate",  
    "timestamp": "2020-04-17 10:43:33",  
    "bounding_box_confidence": 0.74923179,  
    "x1": 439,  
    "y1": 218,  
    "x2": 501,  
    "y2": 218,  
    "x3": 501,  
    "y3": 253,  
    "x4": 439,  
    "y4": 253,  
    "plate_text": "KCK|997A|KCK997A",  
    "base64PlatePhoto": ""  
  }  
]
```

6. Pricing Packages

Other Common Features

- Get text for each plate number detected in one photo.
- Get bounding boxes vertices for each plate number detected.
- Get crop pictures of plate bounding boxes for each photo.
- Get confidence score for bounding boxes.
- Administration console.
- Premium support through online chat and/or tickets, very supportive help and quick responses.

Free 7 Days TRIAL	Monthly TIER	Yearly TIER
\$0	\$80	\$816
FREE	No Discount	15% Discount
50 Reqs / Day	10000 Reqs/Month	10000 Reqs/Month
60 Languages	60 Languages	60 Languages
NO Copyright	Commercial Copyright	Commercial Copyright
Chat Suport 24 x7	Chat Support 24 x 7	Chat Support 24 x 7
Try it NOW!	Buy NOW!	Buy NOW!



THANK YOU

I am looking forward to visit our website!

<https://www.de-vis-software.ro/license-plate-recognition-api.aspx>